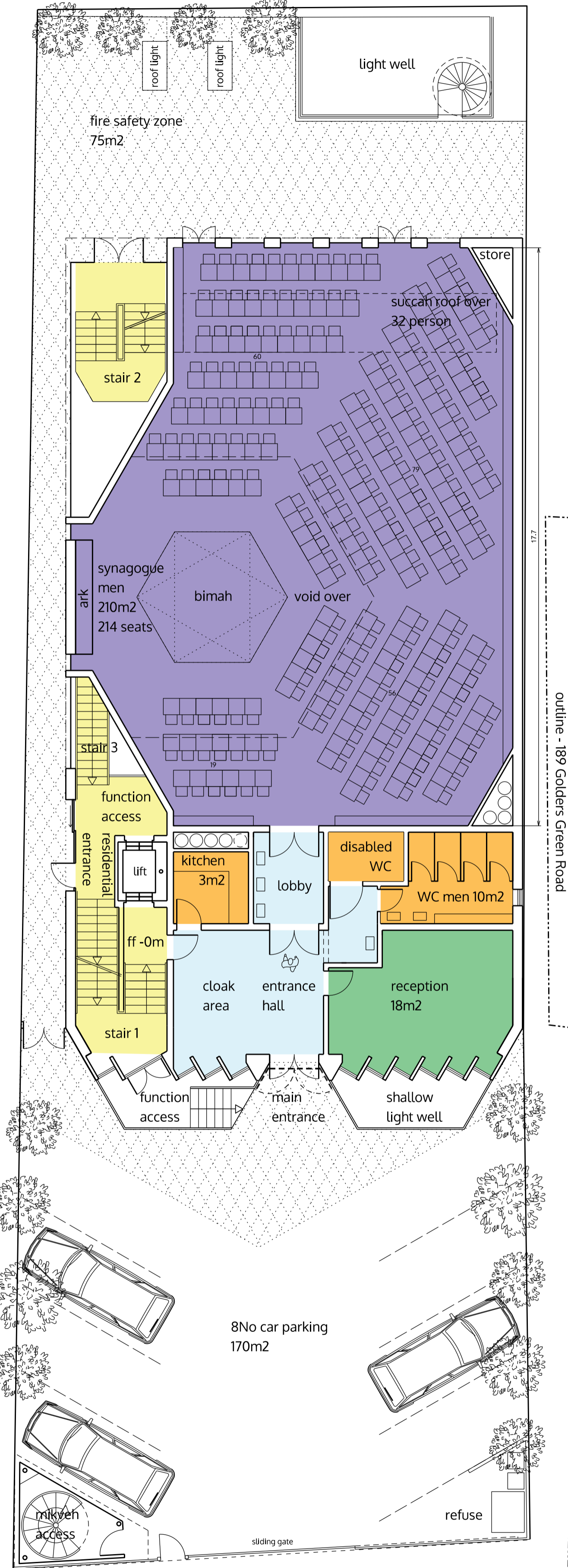
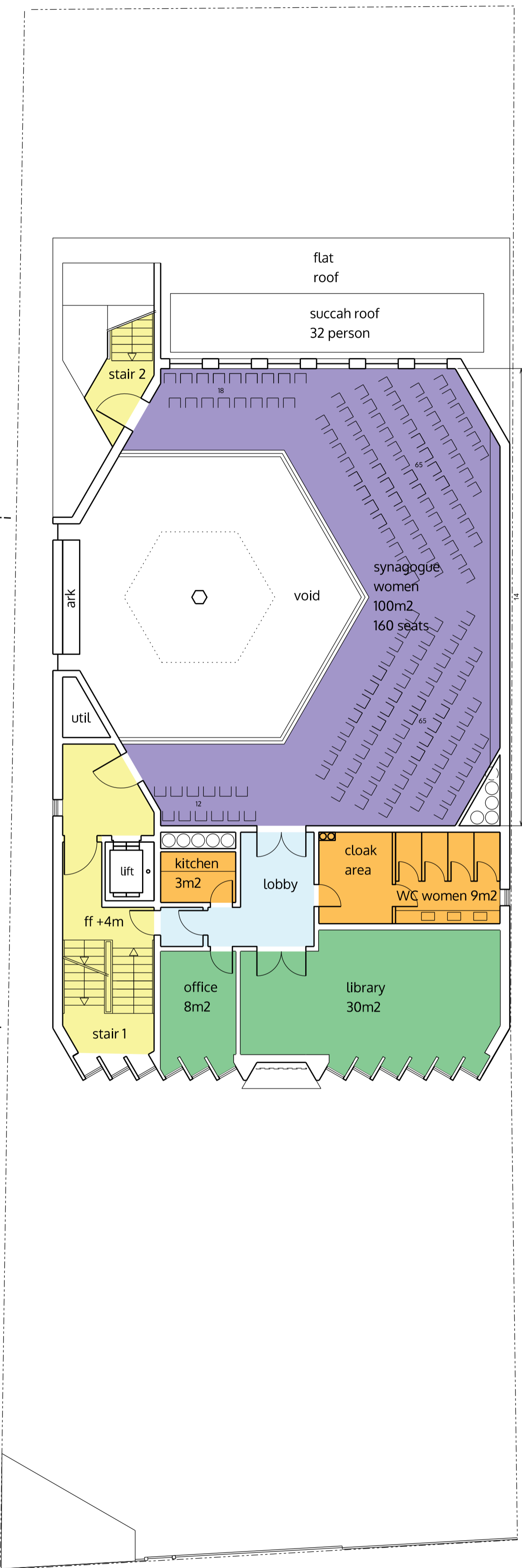


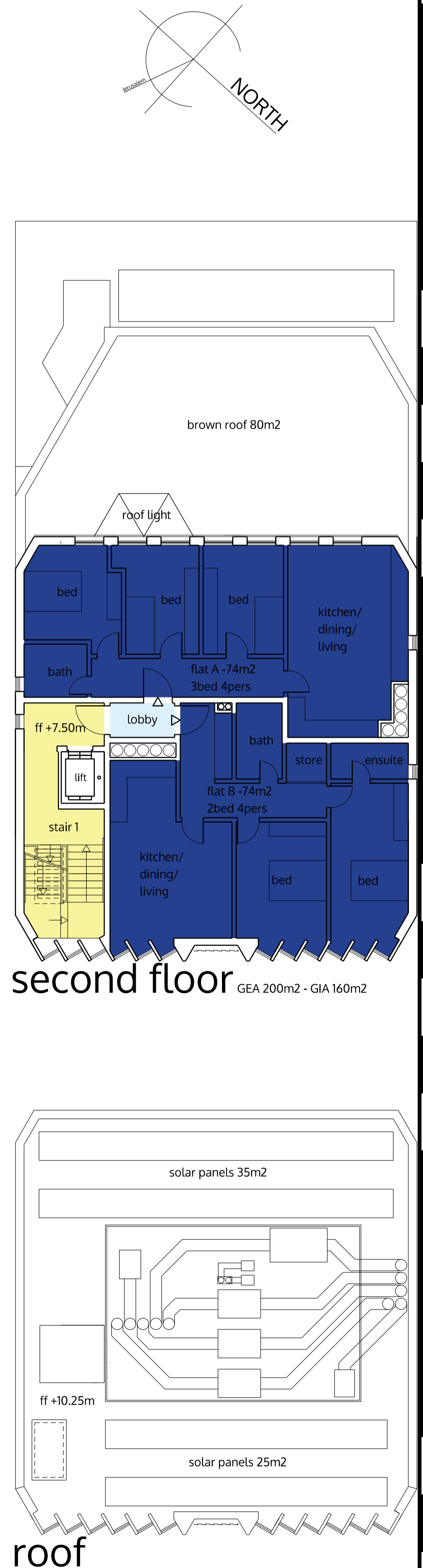
**basement** GEA 625m<sup>2</sup> - GIA 575m<sup>2</sup>



**ground floor** GEA 350m<sup>2</sup> - GIA 290m<sup>2</sup>



**first floor** GEA 300m<sup>2</sup> - GIA 180m<sup>2</sup>



**roof**

**LEGEND**  
 - - - - - existing building outline

Floor areas (indicative only):  
 site area - 720m<sup>2</sup>  
 total GEA - 1475m<sup>2</sup>  
 total GIA - 1205m<sup>2</sup>

synagogue - 310m<sup>2</sup>  
 function hall - 180m<sup>2</sup>  
 lecture hall - 90m<sup>2</sup>  
 mikveh - 60m<sup>2</sup>  
 library - 22m<sup>2</sup> and 30m<sup>2</sup>

2 - bed 4-person flat - 74m<sup>2</sup>  
 3 - bed 4-person flat - 74m<sup>2</sup>

8No car parking places

ALL DIMENSIONS TO BE CHECKED ON SITE

10  
8  
6  
4  
2  
m 0

© ALL COPYRIGHTS RESERVED

**spaceAgent**  
 Architects and Designers mail@spaceagent.com  
 London-Barcelona-Heidelberg www.spaceagent.com  
 spaceAgent Architects Limited is a RIBA Chartered Practice

**project** New Kneset Yehezkel synagogue  
 185-187 Golders Green Road  
 London NW11 9BY

**client** Beth Hamedrash Kneset Yehezkel  
 187 Golders Green Road  
 London NW11 9BY

**title** Floor plans  
 as proposed

**marketing only**

1:200 @A3  
 1:100 @A1

Oct 2013

mhamm

**GGR\_P01b2mark**

GOLDERS GREEN ROAD