

Seehausener Straße

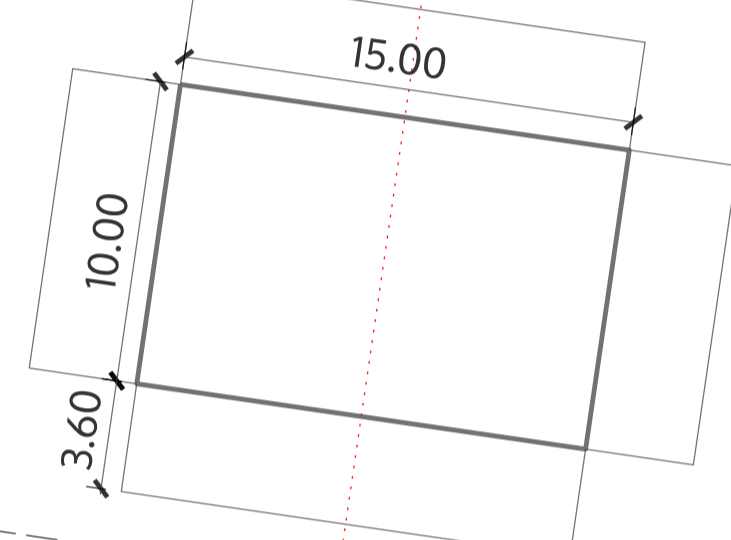
362

Grundstueck (359)  
ca. 12750 m2

Fluechtlingsunterkunft (MuF)  
Block fuer 500 Bewohner  
140 Wohneinheiten (20 pro Geschoss)  
VII - geschossig (ca. 21m)  
75m x 18.5m

37

Pavillion fuer Bewohner  
III - geschossig (ca. 9m)  
15m x 10m



359

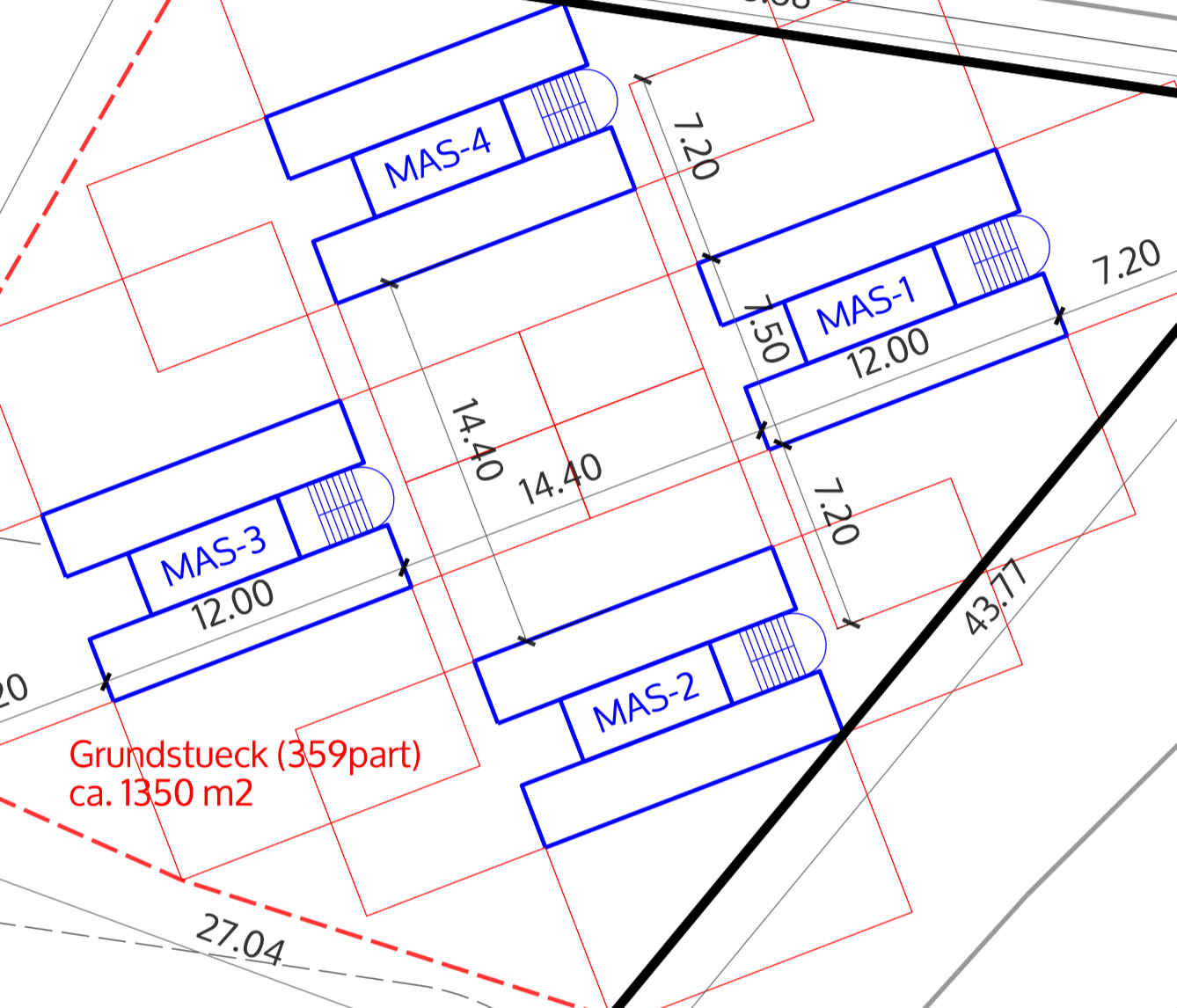
Wohnen I + II  
Block fuer 500 Bewohner  
100 Wohneinheiten (20 pro Geschoss)  
V - geschossig (ca. 15m)  
2 x 60m x 12.5m

35

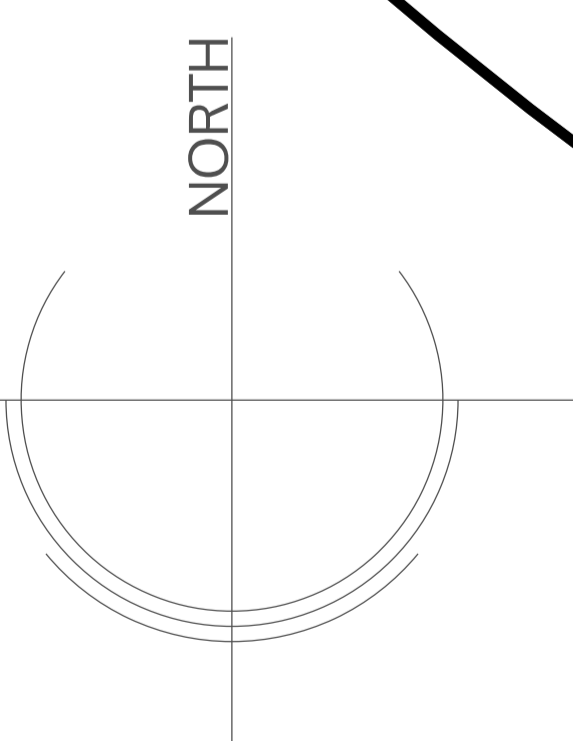
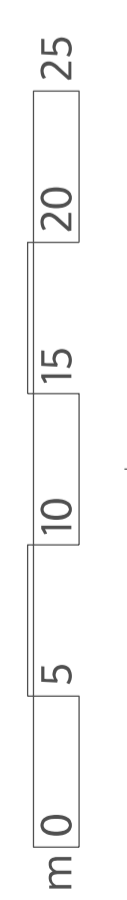
Feuerwehruzufahrt (4m)

33

Grundstueck (359part)  
ca. 1350 m2



Pablo-Picasso-Straße



MODULAR ACCOMMODATION SYSTEMS **MAS**

(c) 2016 www.mhamm.com/MAS EU - PATENT NO 02738348.8 - 2303

**spaceAgent**  
Architects and Designers  
London-Heidelberg-Barcelona-Brussels  
spaceAgent Architects Limited is a RIBA Chartered Practice

project HOWOGE MAS-Turm 10 WE  
33, 35 Seehausener Strasse  
D-13057 Berlin-Lichtenberg

client Modular Accommodation Systems Ltd  
52 Great Eastern Street  
London EC2A 3EP

title MAS - TURM/TOWER  
LAGEPLAN mit 4 Tuermen (layout E)

© ALL COPYRIGHTS RESERVED  
© ALL DIMENSIONS TO BE CHECKED ON SITE

T	1:1000 @A3
	1:500 @A1
	9.6.2016
drawn	mhamm
SHS_P00f	