

NOTES
 CONTRACTOR MUST VERIFY ALL DIMENSIONS OF SITE BEFORE COMMENCING ANY WORK OR SHOP DRAWINGS.
 FINISHED SURFACES ARE TO BE USED IN REFERENCE TO LOCAL LEVELING.
 IF THIS DRAWING EXCEEDS THE QUANTITIES TAKEN IN ANY OF THE WORKSHEETS ARE TO BE WORKED BEFORE THE WORK IS INSTALLED.
 SELECT CONTRACT

NOTE 1
 FOR CARPARK LEVELS, DRAIN, MANHOLE AND GULLY POSITIONS REFER TO STRUCTURAL ENGINEERS DRAWING.

REV 1: ALL WORK TO BE DONE WITHIN THE PERIOD OF 12 MONTHS FROM THE DATE OF ISSUE OF THIS DRAWING.
 REV 2: ALL WORK TO BE DONE WITHIN THE PERIOD OF 12 MONTHS FROM THE DATE OF ISSUE OF THIS DRAWING.
 REV 3: ALL WORK TO BE DONE WITHIN THE PERIOD OF 12 MONTHS FROM THE DATE OF ISSUE OF THIS DRAWING.
 REV 4: ALL WORK TO BE DONE WITHIN THE PERIOD OF 12 MONTHS FROM THE DATE OF ISSUE OF THIS DRAWING.
 REV 5: ALL WORK TO BE DONE WITHIN THE PERIOD OF 12 MONTHS FROM THE DATE OF ISSUE OF THIS DRAWING.
 REV 6: ALL WORK TO BE DONE WITHIN THE PERIOD OF 12 MONTHS FROM THE DATE OF ISSUE OF THIS DRAWING.
 REV 7: ALL WORK TO BE DONE WITHIN THE PERIOD OF 12 MONTHS FROM THE DATE OF ISSUE OF THIS DRAWING.
 REV 8: ALL WORK TO BE DONE WITHIN THE PERIOD OF 12 MONTHS FROM THE DATE OF ISSUE OF THIS DRAWING.
 REV 9: ALL WORK TO BE DONE WITHIN THE PERIOD OF 12 MONTHS FROM THE DATE OF ISSUE OF THIS DRAWING.
 REV 10: ALL WORK TO BE DONE WITHIN THE PERIOD OF 12 MONTHS FROM THE DATE OF ISSUE OF THIS DRAWING.

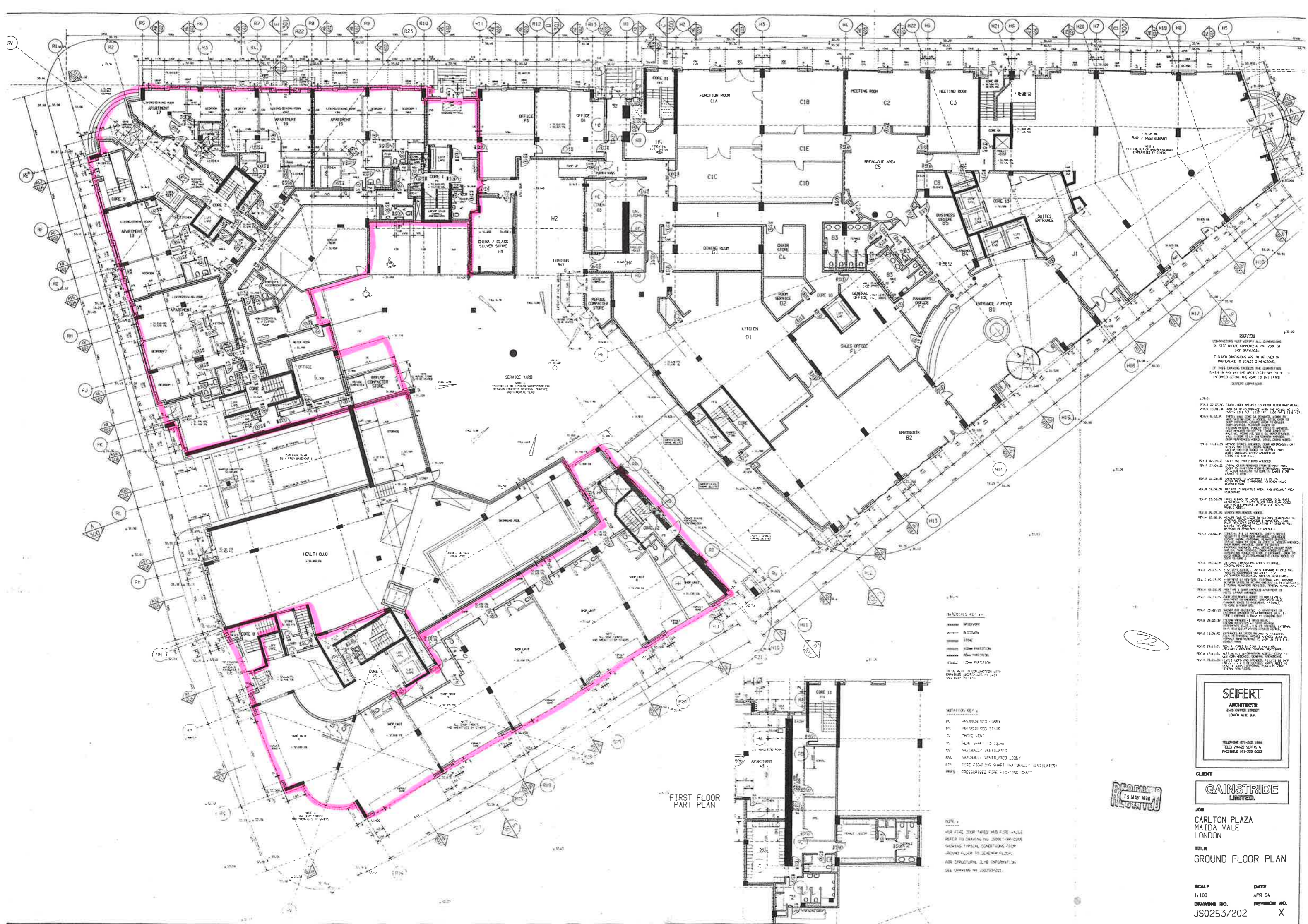
SEPERT
 ARCHITECTS
 210 GERRARD STREET
 LONDON W1D 7JH
 TELEPHONE 01-222 1111
 FACSIMILE 01-222 1111

CLIENT
GAINSFIDE
 LIMITED

13 DEC 1983
 AMEC BUILDING LTD
 FOR CONSTRUCTION

JOB
 CARLTON PLAZA
 MAIDA VALE
 LONDON
 TITLE
 BASEMENT PLAN
 LEVEL -1

SCALE
 1:100
 DATE
 APR 84
 DRAWING NO.
 10007/1201
 REVISION NO.
 1



NOTES
 CONDITIONS MUST VERIFY ALL DIMENSIONS
 BY SITE SURVEYING AND ANY WORK ON
 SITES DIMENSIONS ARE TO BE USED IN
 PREFERENCE TO SCALED DIMENSIONS.
 IF THIS DRAWING EXCEEDS THE QUANTITIES
 STATED AND HAS THE CONTRACTOR TO BE
 INFORMED BEFORE THE WORK IS INITIATED
 SEIFERT CONTRACTORS

- REV 1 01.05.96 STAIR CORE ADDED TO FIRST FLOOR PLAN
- REV 2 10.04.96 STAIR CORE ADDED TO FIRST FLOOR PLAN
- REV 3 01.02.96 STAIR CORE ADDED TO FIRST FLOOR PLAN
- REV 4 11.02.96 STAIR CORE ADDED TO FIRST FLOOR PLAN
- REV 5 11.02.96 STAIR CORE ADDED TO FIRST FLOOR PLAN
- REV 6 11.02.96 STAIR CORE ADDED TO FIRST FLOOR PLAN
- REV 7 11.02.96 STAIR CORE ADDED TO FIRST FLOOR PLAN
- REV 8 11.02.96 STAIR CORE ADDED TO FIRST FLOOR PLAN
- REV 9 11.02.96 STAIR CORE ADDED TO FIRST FLOOR PLAN
- REV 10 11.02.96 STAIR CORE ADDED TO FIRST FLOOR PLAN
- REV 11 11.02.96 STAIR CORE ADDED TO FIRST FLOOR PLAN
- REV 12 11.02.96 STAIR CORE ADDED TO FIRST FLOOR PLAN
- REV 13 11.02.96 STAIR CORE ADDED TO FIRST FLOOR PLAN
- REV 14 11.02.96 STAIR CORE ADDED TO FIRST FLOOR PLAN
- REV 15 11.02.96 STAIR CORE ADDED TO FIRST FLOOR PLAN
- REV 16 11.02.96 STAIR CORE ADDED TO FIRST FLOOR PLAN
- REV 17 11.02.96 STAIR CORE ADDED TO FIRST FLOOR PLAN
- REV 18 11.02.96 STAIR CORE ADDED TO FIRST FLOOR PLAN
- REV 19 11.02.96 STAIR CORE ADDED TO FIRST FLOOR PLAN
- REV 20 11.02.96 STAIR CORE ADDED TO FIRST FLOOR PLAN
- REV 21 11.02.96 STAIR CORE ADDED TO FIRST FLOOR PLAN
- REV 22 11.02.96 STAIR CORE ADDED TO FIRST FLOOR PLAN
- REV 23 11.02.96 STAIR CORE ADDED TO FIRST FLOOR PLAN
- REV 24 11.02.96 STAIR CORE ADDED TO FIRST FLOOR PLAN
- REV 25 11.02.96 STAIR CORE ADDED TO FIRST FLOOR PLAN
- REV 26 11.02.96 STAIR CORE ADDED TO FIRST FLOOR PLAN
- REV 27 11.02.96 STAIR CORE ADDED TO FIRST FLOOR PLAN
- REV 28 11.02.96 STAIR CORE ADDED TO FIRST FLOOR PLAN
- REV 29 11.02.96 STAIR CORE ADDED TO FIRST FLOOR PLAN
- REV 30 11.02.96 STAIR CORE ADDED TO FIRST FLOOR PLAN
- REV 31 11.02.96 STAIR CORE ADDED TO FIRST FLOOR PLAN
- REV 32 11.02.96 STAIR CORE ADDED TO FIRST FLOOR PLAN
- REV 33 11.02.96 STAIR CORE ADDED TO FIRST FLOOR PLAN
- REV 34 11.02.96 STAIR CORE ADDED TO FIRST FLOOR PLAN
- REV 35 11.02.96 STAIR CORE ADDED TO FIRST FLOOR PLAN
- REV 36 11.02.96 STAIR CORE ADDED TO FIRST FLOOR PLAN
- REV 37 11.02.96 STAIR CORE ADDED TO FIRST FLOOR PLAN
- REV 38 11.02.96 STAIR CORE ADDED TO FIRST FLOOR PLAN
- REV 39 11.02.96 STAIR CORE ADDED TO FIRST FLOOR PLAN
- REV 40 11.02.96 STAIR CORE ADDED TO FIRST FLOOR PLAN
- REV 41 11.02.96 STAIR CORE ADDED TO FIRST FLOOR PLAN
- REV 42 11.02.96 STAIR CORE ADDED TO FIRST FLOOR PLAN
- REV 43 11.02.96 STAIR CORE ADDED TO FIRST FLOOR PLAN
- REV 44 11.02.96 STAIR CORE ADDED TO FIRST FLOOR PLAN
- REV 45 11.02.96 STAIR CORE ADDED TO FIRST FLOOR PLAN
- REV 46 11.02.96 STAIR CORE ADDED TO FIRST FLOOR PLAN
- REV 47 11.02.96 STAIR CORE ADDED TO FIRST FLOOR PLAN
- REV 48 11.02.96 STAIR CORE ADDED TO FIRST FLOOR PLAN
- REV 49 11.02.96 STAIR CORE ADDED TO FIRST FLOOR PLAN
- REV 50 11.02.96 STAIR CORE ADDED TO FIRST FLOOR PLAN
- REV 51 11.02.96 STAIR CORE ADDED TO FIRST FLOOR PLAN
- REV 52 11.02.96 STAIR CORE ADDED TO FIRST FLOOR PLAN
- REV 53 11.02.96 STAIR CORE ADDED TO FIRST FLOOR PLAN
- REV 54 11.02.96 STAIR CORE ADDED TO FIRST FLOOR PLAN
- REV 55 11.02.96 STAIR CORE ADDED TO FIRST FLOOR PLAN
- REV 56 11.02.96 STAIR CORE ADDED TO FIRST FLOOR PLAN
- REV 57 11.02.96 STAIR CORE ADDED TO FIRST FLOOR PLAN
- REV 58 11.02.96 STAIR CORE ADDED TO FIRST FLOOR PLAN
- REV 59 11.02.96 STAIR CORE ADDED TO FIRST FLOOR PLAN
- REV 60 11.02.96 STAIR CORE ADDED TO FIRST FLOOR PLAN
- REV 61 11.02.96 STAIR CORE ADDED TO FIRST FLOOR PLAN
- REV 62 11.02.96 STAIR CORE ADDED TO FIRST FLOOR PLAN
- REV 63 11.02.96 STAIR CORE ADDED TO FIRST FLOOR PLAN
- REV 64 11.02.96 STAIR CORE ADDED TO FIRST FLOOR PLAN
- REV 65 11.02.96 STAIR CORE ADDED TO FIRST FLOOR PLAN
- REV 66 11.02.96 STAIR CORE ADDED TO FIRST FLOOR PLAN
- REV 67 11.02.96 STAIR CORE ADDED TO FIRST FLOOR PLAN
- REV 68 11.02.96 STAIR CORE ADDED TO FIRST FLOOR PLAN
- REV 69 11.02.96 STAIR CORE ADDED TO FIRST FLOOR PLAN
- REV 70 11.02.96 STAIR CORE ADDED TO FIRST FLOOR PLAN
- REV 71 11.02.96 STAIR CORE ADDED TO FIRST FLOOR PLAN
- REV 72 11.02.96 STAIR CORE ADDED TO FIRST FLOOR PLAN
- REV 73 11.02.96 STAIR CORE ADDED TO FIRST FLOOR PLAN
- REV 74 11.02.96 STAIR CORE ADDED TO FIRST FLOOR PLAN
- REV 75 11.02.96 STAIR CORE ADDED TO FIRST FLOOR PLAN
- REV 76 11.02.96 STAIR CORE ADDED TO FIRST FLOOR PLAN
- REV 77 11.02.96 STAIR CORE ADDED TO FIRST FLOOR PLAN
- REV 78 11.02.96 STAIR CORE ADDED TO FIRST FLOOR PLAN
- REV 79 11.02.96 STAIR CORE ADDED TO FIRST FLOOR PLAN
- REV 80 11.02.96 STAIR CORE ADDED TO FIRST FLOOR PLAN
- REV 81 11.02.96 STAIR CORE ADDED TO FIRST FLOOR PLAN
- REV 82 11.02.96 STAIR CORE ADDED TO FIRST FLOOR PLAN
- REV 83 11.02.96 STAIR CORE ADDED TO FIRST FLOOR PLAN
- REV 84 11.02.96 STAIR CORE ADDED TO FIRST FLOOR PLAN
- REV 85 11.02.96 STAIR CORE ADDED TO FIRST FLOOR PLAN
- REV 86 11.02.96 STAIR CORE ADDED TO FIRST FLOOR PLAN
- REV 87 11.02.96 STAIR CORE ADDED TO FIRST FLOOR PLAN
- REV 88 11.02.96 STAIR CORE ADDED TO FIRST FLOOR PLAN
- REV 89 11.02.96 STAIR CORE ADDED TO FIRST FLOOR PLAN
- REV 90 11.02.96 STAIR CORE ADDED TO FIRST FLOOR PLAN
- REV 91 11.02.96 STAIR CORE ADDED TO FIRST FLOOR PLAN
- REV 92 11.02.96 STAIR CORE ADDED TO FIRST FLOOR PLAN
- REV 93 11.02.96 STAIR CORE ADDED TO FIRST FLOOR PLAN
- REV 94 11.02.96 STAIR CORE ADDED TO FIRST FLOOR PLAN
- REV 95 11.02.96 STAIR CORE ADDED TO FIRST FLOOR PLAN
- REV 96 11.02.96 STAIR CORE ADDED TO FIRST FLOOR PLAN
- REV 97 11.02.96 STAIR CORE ADDED TO FIRST FLOOR PLAN
- REV 98 11.02.96 STAIR CORE ADDED TO FIRST FLOOR PLAN
- REV 99 11.02.96 STAIR CORE ADDED TO FIRST FLOOR PLAN
- REV 100 11.02.96 STAIR CORE ADDED TO FIRST FLOOR PLAN

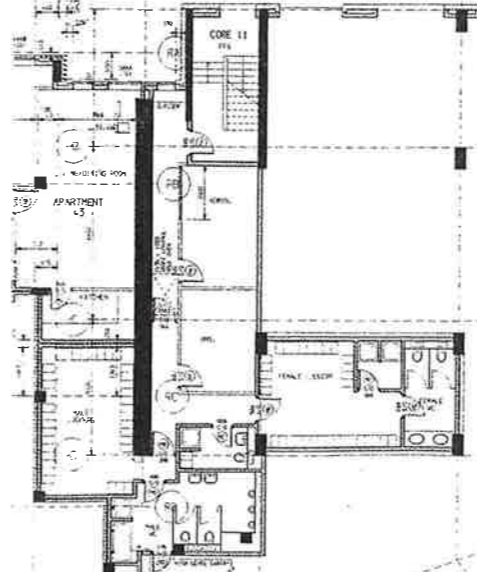
MATERIALS KEY

- SPRINKLER
- BLOCKING
- STAIR
- 100mm PARTITION
- 200mm PARTITION
- 125mm PARTITION

NOTATION KEY

- PL PRESSURISED LOBBY
- PS PRESSURISED STAIR
- SV SHOE VENT
- VS VENT SHAFT 125mm
- NV NATURALLY VENTILATED
- NVL NATURALLY VENTILATED LOBBY
- FFS FIRE FIGHTING SHAFT IN WALL VENTILATED
- FFFS PRESSURISED FIRE FIGHTING SHAFT

NOTE
 FOR FIRE DOOR TYPES AND FIRE WALLS
 REFER TO DRAWING NO. 2001-1-0000
 SAVING TYPICAL CONDITIONS FROM
 GROUND FLOOR TO SEVENTH FLOOR.
 FOR STRUCTURAL SLAB INFORMATION
 SEE DRAWING NO. 2002-1-0000.



FIRST FLOOR
PART PLAN

SEIFERT
 ARCHITECTS
 200 GERRARD STREET
 LONDON W1E 6JA
 TELEPHONE 071-222 1844
 TELE FAX 071-222 1844
 FACSIMILE 071-222 0000

GAINSTRIDE
 LIMITED

CLIENT
 CARLTON PLAZA
 MAIDA VALE
 LONDON

TITLE
 GROUND FLOOR PLAN

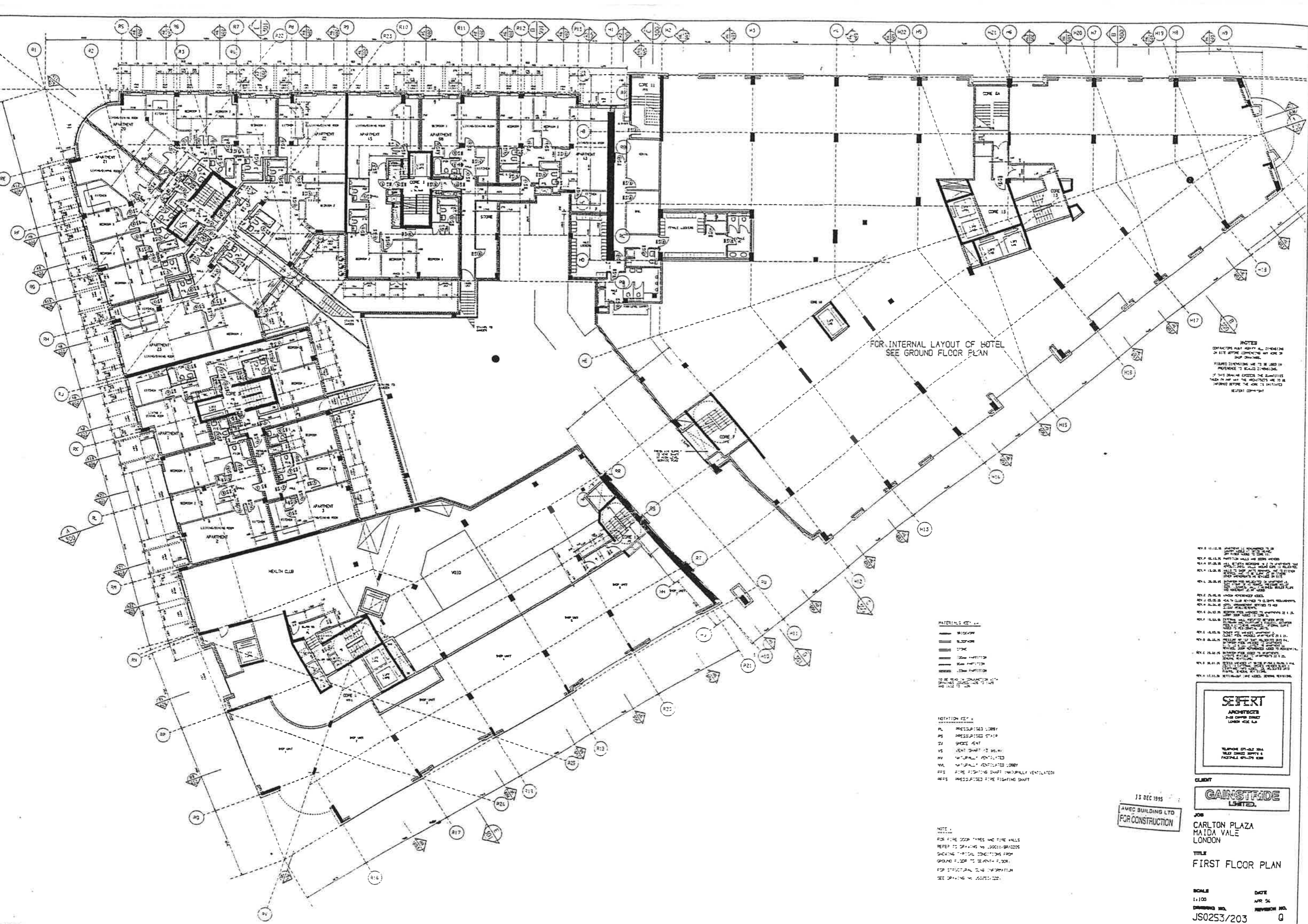
SCALE
 1:100

DATE
 APR 94

DRAWING NO.
 JS0253/202

REVISION NO.
 X

15 MAY 1998



NOTES
 CONTRACTOR MUST VERIFY ALL DIMENSIONS ON SITE BEFORE COMMENCING WORK AND REPORT ANY DISCREPANCIES.
 FINISHED DIMENSIONS ARE TO BE USED IN PREFERENCE TO UNFINISHED DIMENSIONS.
 IF THIS DRAWING EXCEEDS THE QUALITIES SET OUT IN THE CONTRACT IT SHALL BE THE RESPONSIBILITY OF THE CONTRACTOR TO REPORT ANY DISCREPANCIES TO THE ARCHITECT BEFORE THE WORK IS INITIATED.
 SECRET CONTRACT

REV 0 11.12.95 APPROVED FOR CONSTRUCTION BY THE ARCHITECT.
 REV 1 01.01.96 APPROVED FOR CONSTRUCTION BY THE ARCHITECT.
 REV 2 15.01.96 APPROVED FOR CONSTRUCTION BY THE ARCHITECT.
 REV 3 22.01.96 APPROVED FOR CONSTRUCTION BY THE ARCHITECT.
 REV 4 29.01.96 APPROVED FOR CONSTRUCTION BY THE ARCHITECT.
 REV 5 05.02.96 APPROVED FOR CONSTRUCTION BY THE ARCHITECT.
 REV 6 12.02.96 APPROVED FOR CONSTRUCTION BY THE ARCHITECT.
 REV 7 19.02.96 APPROVED FOR CONSTRUCTION BY THE ARCHITECT.
 REV 8 26.02.96 APPROVED FOR CONSTRUCTION BY THE ARCHITECT.
 REV 9 05.03.96 APPROVED FOR CONSTRUCTION BY THE ARCHITECT.
 REV 10 12.03.96 APPROVED FOR CONSTRUCTION BY THE ARCHITECT.
 REV 11 19.03.96 APPROVED FOR CONSTRUCTION BY THE ARCHITECT.
 REV 12 26.03.96 APPROVED FOR CONSTRUCTION BY THE ARCHITECT.
 REV 13 02.04.96 APPROVED FOR CONSTRUCTION BY THE ARCHITECT.
 REV 14 09.04.96 APPROVED FOR CONSTRUCTION BY THE ARCHITECT.
 REV 15 16.04.96 APPROVED FOR CONSTRUCTION BY THE ARCHITECT.
 REV 16 23.04.96 APPROVED FOR CONSTRUCTION BY THE ARCHITECT.
 REV 17 30.04.96 APPROVED FOR CONSTRUCTION BY THE ARCHITECT.
 REV 18 07.05.96 APPROVED FOR CONSTRUCTION BY THE ARCHITECT.
 REV 19 14.05.96 APPROVED FOR CONSTRUCTION BY THE ARCHITECT.
 REV 20 21.05.96 APPROVED FOR CONSTRUCTION BY THE ARCHITECT.
 REV 21 28.05.96 APPROVED FOR CONSTRUCTION BY THE ARCHITECT.
 REV 22 04.06.96 APPROVED FOR CONSTRUCTION BY THE ARCHITECT.
 REV 23 11.06.96 APPROVED FOR CONSTRUCTION BY THE ARCHITECT.
 REV 24 18.06.96 APPROVED FOR CONSTRUCTION BY THE ARCHITECT.
 REV 25 25.06.96 APPROVED FOR CONSTRUCTION BY THE ARCHITECT.

MATERIALS
 WINDOW
 BLOCK
 STONE
 WALL PARTITION
 FLOOR PARTITION
 CEILING PARTITION
 TO BE SHOWN IN CONNECTION WITH DRAWINGS TO BE MADE TO THE ARCHITECT'S OFFICE.

NOTATION
 PL PRESSURISED LOBBY
 PS PRESSURISED STAIR
 SZ SHOCK ZONE
 VS VENT SHUNT TO BALCONY
 NV NATURALLY VENTILATED
 MV NATURALLY VENTILATED LOBBY
 FRS FIRE FIGHTING SHUNT NATURALLY VENTILATED
 FRS PRESSURISED FIRE FIGHTING SHUNT

NOTE
 FOR FIRE DOOR TYPES AND FIRE RALLS REFER TO DRAWINGS NO. J00011/01/0005 SHOWING TYPICAL CONDITIONS FROM GROUND FLOOR TO SEVENTH FLOOR. FOR STRUCTURAL CLG INFORMATION SEE DRAWING NO. J00011/01/0006.

SECRET
 ARCHITECTS
 1-8 CHICHESTER STREET
 LONDON W1C 2EX, UK
 TELEPHONE 071-834 5544
 FAX 071-834 5555
 FACSIMILE 071-834 5556

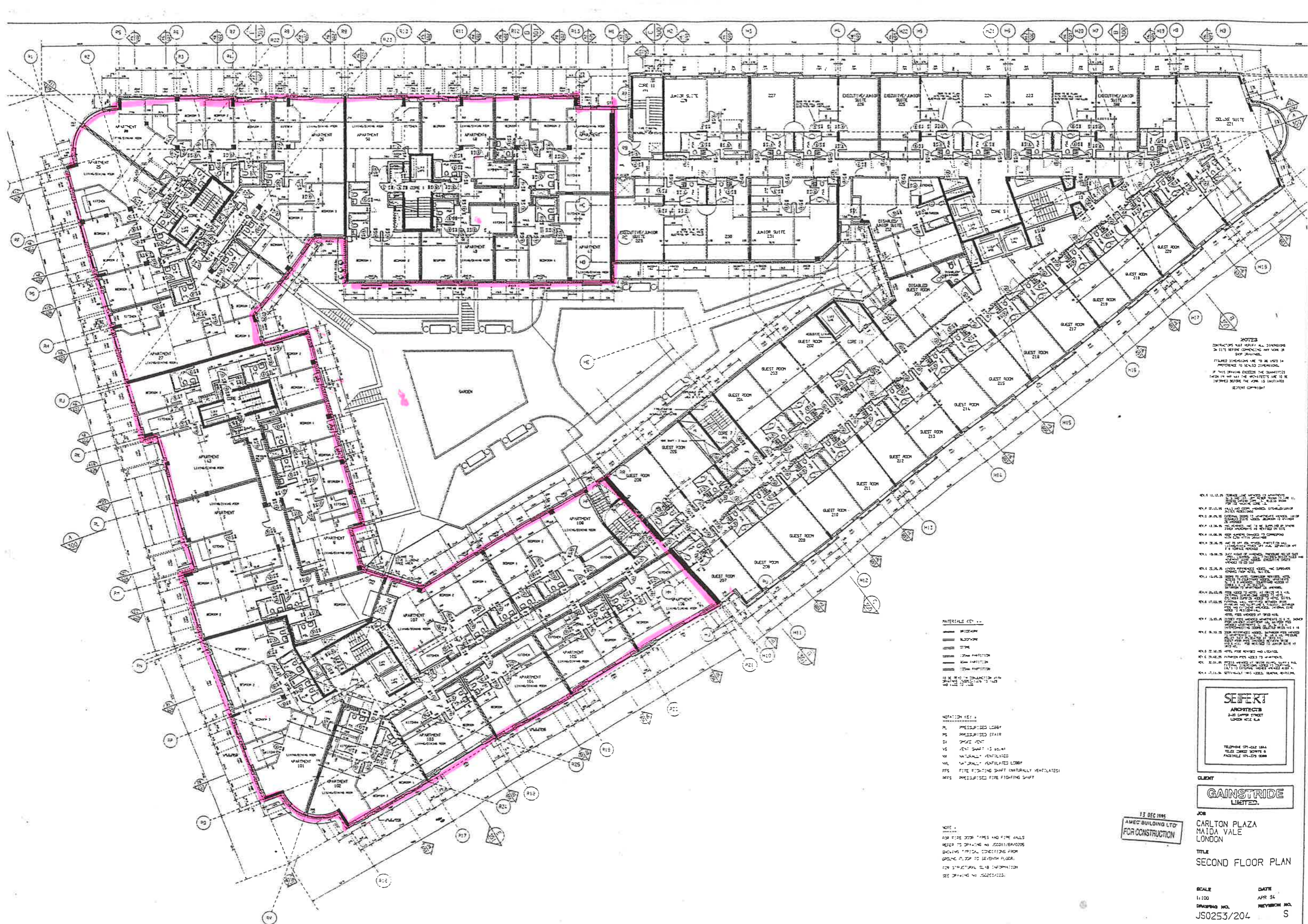
13 DEC 1995
 LAVEC BUILDING LTD
 FOR CONSTRUCTION

CLIENT
GAINSFIDE LIMITED

JOB
 CARLTON PLAZA
 MAIDON VALE
 LONDON

TITLE
 FIRST FLOOR PLAN

SCALE
 1:100
DATE
 APR 94
DRAWING NO.
 JS0253/203
REVISION NO.
 0



NOTES
 CONTRACTORS MUST VERIFY ALL DIMENSIONS ON SITE BEFORE COMMENCING ANY WORK OR SHOP DRAWINGS.
 DIMENSIONS SHOWN ARE TO BE USED IN PREFERENCE TO SCALED DIMENSIONS.
 IF THIS DRAWING EXCEEDS THE QUANTITIES SHOWN IN THE WORKS SPECIFICATION TO BE COMPLETED BEFORE THE WORK IS INITIATED.
 SEPERT ARCHITECTS

- REV. 11.12.95 TO SHOW THE VENTILATED APARTMENT 111, 112, 113, 114, 115, 116, 117, 118, 119, 120, 121, 122, 123, 124, 125, 126, 127, 128, 129, 130, 131, 132, 133, 134, 135, 136, 137, 138, 139, 140, 141, 142, 143, 144, 145, 146, 147, 148, 149, 150, 151, 152, 153, 154, 155, 156, 157, 158, 159, 160, 161, 162, 163, 164, 165, 166, 167, 168, 169, 170, 171, 172, 173, 174, 175, 176, 177, 178, 179, 180, 181, 182, 183, 184, 185, 186, 187, 188, 189, 190, 191, 192, 193, 194, 195, 196, 197, 198, 199, 200, 201, 202, 203, 204, 205, 206, 207, 208, 209, 210, 211, 212, 213, 214, 215, 216, 217, 218, 219, 220, 221, 222, 223, 224, 225, 226, 227, 228, 229, 230, 231, 232, 233, 234, 235, 236, 237, 238, 239, 240, 241, 242, 243, 244, 245, 246, 247, 248, 249, 250, 251, 252, 253, 254, 255, 256, 257, 258, 259, 260, 261, 262, 263, 264, 265, 266, 267, 268, 269, 270, 271, 272, 273, 274, 275, 276, 277, 278, 279, 280, 281, 282, 283, 284, 285, 286, 287, 288, 289, 290, 291, 292, 293, 294, 295, 296, 297, 298, 299, 300, 301, 302, 303, 304, 305, 306, 307, 308, 309, 310, 311, 312, 313, 314, 315, 316, 317, 318, 319, 320, 321, 322, 323, 324, 325, 326, 327, 328, 329, 330, 331, 332, 333, 334, 335, 336, 337, 338, 339, 340, 341, 342, 343, 344, 345, 346, 347, 348, 349, 350, 351, 352, 353, 354, 355, 356, 357, 358, 359, 360, 361, 362, 363, 364, 365, 366, 367, 368, 369, 370, 371, 372, 373, 374, 375, 376, 377, 378, 379, 380, 381, 382, 383, 384, 385, 386, 387, 388, 389, 390, 391, 392, 393, 394, 395, 396, 397, 398, 399, 400, 401, 402, 403, 404, 405, 406, 407, 408, 409, 410, 411, 412, 413, 414, 415, 416, 417, 418, 419, 420, 421, 422, 423, 424, 425, 426, 427, 428, 429, 430, 431, 432, 433, 434, 435, 436, 437, 438, 439, 440, 441, 442, 443, 444, 445, 446, 447, 448, 449, 450, 451, 452, 453, 454, 455, 456, 457, 458, 459, 460, 461, 462, 463, 464, 465, 466, 467, 468, 469, 470, 471, 472, 473, 474, 475, 476, 477, 478, 479, 480, 481, 482, 483, 484, 485, 486, 487, 488, 489, 490, 491, 492, 493, 494, 495, 496, 497, 498, 499, 500, 501, 502, 503, 504, 505, 506, 507, 508, 509, 510, 511, 512, 513, 514, 515, 516, 517, 518, 519, 520, 521, 522, 523, 524, 525, 526, 527, 528, 529, 530, 531, 532, 533, 534, 535, 536, 537, 538, 539, 540, 541, 542, 543, 544, 545, 546, 547, 548, 549, 550, 551, 552, 553, 554, 555, 556, 557, 558, 559, 560, 561, 562, 563, 564, 565, 566, 567, 568, 569, 570, 571, 572, 573, 574, 575, 576, 577, 578, 579, 580, 581, 582, 583, 584, 585, 586, 587, 588, 589, 590, 591, 592, 593, 594, 595, 596, 597, 598, 599, 600, 601, 602, 603, 604, 605, 606, 607, 608, 609, 610, 611, 612, 613, 614, 615, 616, 617, 618, 619, 620, 621, 622, 623, 624, 625, 626, 627, 628, 629, 630, 631, 632, 633, 634, 635, 636, 637, 638, 639, 640, 641, 642, 643, 644, 645, 646, 647, 648, 649, 650, 651, 652, 653, 654, 655, 656, 657, 658, 659, 660, 661, 662, 663, 664, 665, 666, 667, 668, 669, 670, 671, 672, 673, 674, 675, 676, 677, 678, 679, 680, 681, 682, 683, 684, 685, 686, 687, 688, 689, 690, 691, 692, 693, 694, 695, 696, 697, 698, 699, 700, 701, 702, 703, 704, 705, 706, 707, 708, 709, 710, 711, 712, 713, 714, 715, 716, 717, 718, 719, 720, 721, 722, 723, 724, 725, 726, 727, 728, 729, 730, 731, 732, 733, 734, 735, 736, 737, 738, 739, 740, 741, 742, 743, 744, 745, 746, 747, 748, 749, 750, 751, 752, 753, 754, 755, 756, 757, 758, 759, 760, 761, 762, 763, 764, 765, 766, 767, 768, 769, 770, 771, 772, 773, 774, 775, 776, 777, 778, 779, 780, 781, 782, 783, 784, 785, 786, 787, 788, 789, 790, 791, 792, 793, 794, 795, 796, 797, 798, 799, 800, 801, 802, 803, 804, 805, 806, 807, 808, 809, 810, 811, 812, 813, 814, 815, 816, 817, 818, 819, 820, 821, 822, 823, 824, 825, 826, 827, 828, 829, 830, 831, 832, 833, 834, 835, 836, 837, 838, 839, 840, 841, 842, 843, 844, 845, 846, 847, 848, 849, 850, 851, 852, 853, 854, 855, 856, 857, 858, 859, 860, 861, 862, 863, 864, 865, 866, 867, 868, 869, 870, 871, 872, 873, 874, 875, 876, 877, 878, 879, 880, 881, 882, 883, 884, 885, 886, 887, 888, 889, 890, 891, 892, 893, 894, 895, 896, 897, 898, 899, 900, 901, 902, 903, 904, 905, 906, 907, 908, 909, 910, 911, 912, 913, 914, 915, 916, 917, 918, 919, 920, 921, 922, 923, 924, 925, 926, 927, 928, 929, 930, 931, 932, 933, 934, 935, 936, 937, 938, 939, 940, 941, 942, 943, 944, 945, 946, 947, 948, 949, 950, 951, 952, 953, 954, 955, 956, 957, 958, 959, 960, 961, 962, 963, 964, 965, 966, 967, 968, 969, 970, 971, 972, 973, 974, 975, 976, 977, 978, 979, 980, 981, 982, 983, 984, 985, 986, 987, 988, 989, 990, 991, 992, 993, 994, 995, 996, 997, 998, 999, 1000.

MATERIALS KEY

- WETWORK
- WOODWORK
- GLASS
- GLASS PARTITION
- GLASS PARTITION
- GLASS PARTITION

NOTATION KEY

- PL PRESSURIZED LOBBY
- PS PRESSURIZED STAIR
- SV SHUT VALVE
- VS VENT SHUT VALVE
- NV NATURALLY VENTILATED
- NVL NATURALLY VENTILATED LOBBY
- FFS FIRE FIGHTING SHUT (NATURALLY VENTILATED)
- FFPS PRESSURIZED FIRE FIGHTING SHUT

NOTE
 FOR PIPE TYPES AND PIPE SIZES REFER TO DRAWING NO. 20011/BRANDS SHOWING TYPICAL CONDITIONS FROM GROUND FLOOR TO SEVENTH FLOOR. FOR STRUCTURAL SLAB INFORMATION SEE DRAWING NO. 20021/20022.

SEPERT
 ARCHITECTS
 2nd Floor Street
 London EC2A 4EA

TELEPHONE 071-442 1844
 TELE FAX 071-442 1845
 FACSIMILE 071-442 1846

CLIENT
GAINSTRIDE
 LIMITED

JOB
 CARLTON PLAZA
 MAIDA VALE
 LONDON

13 DEC 1995
 AMEC BUILDING LTD
 FOR CONSTRUCTION

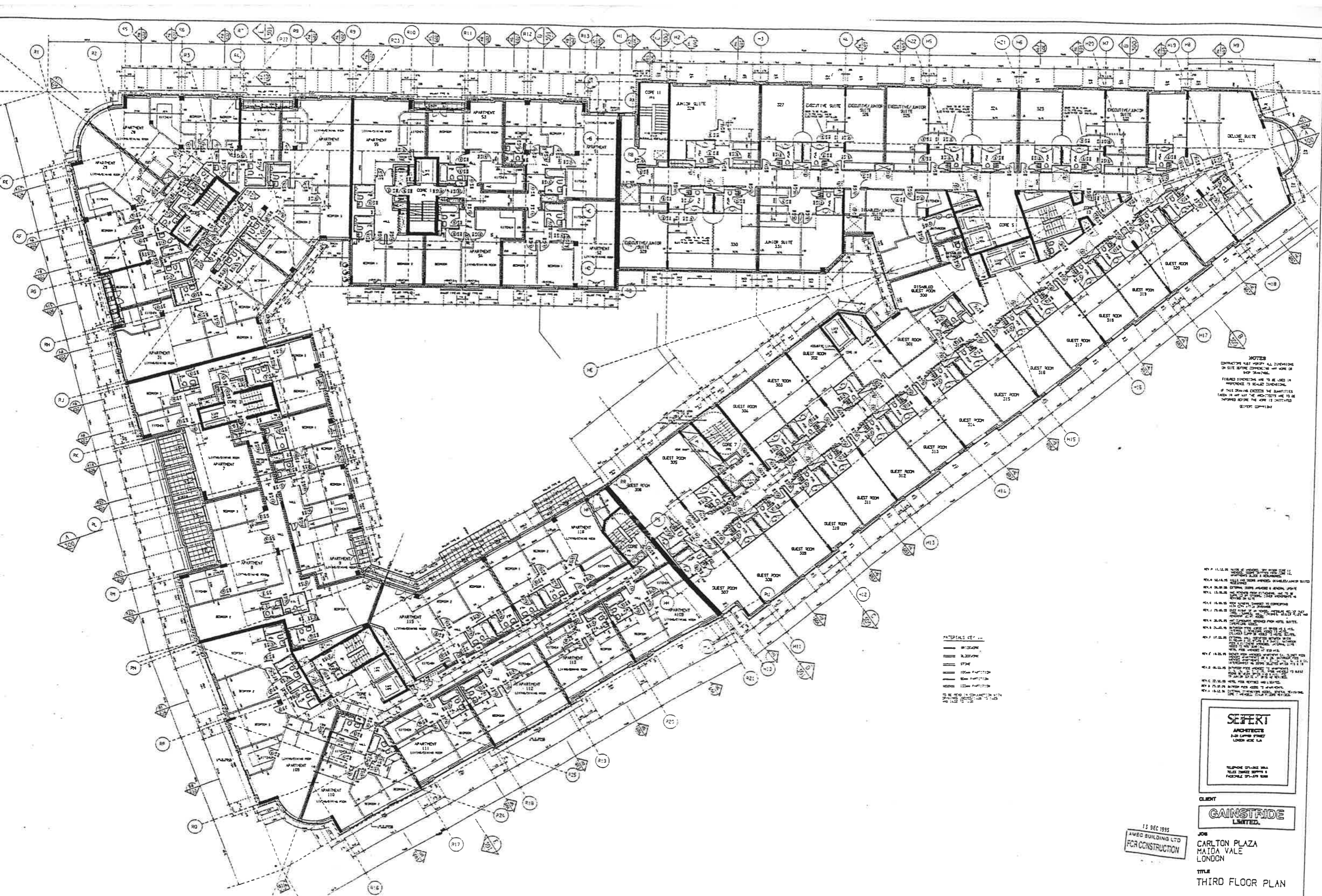
TITLE
 SECOND FLOOR PLAN

SCALE
 1:100

DATE
 APR 94

DRAWING NO.
 JS0253/204

REVISION NO.
 5



NOTES
 CONTRACTOR MUST VERIFY ALL DIMENSIONS ON SITE BEFORE COMMENCING ANY WORK OR SHOP DRAWING.
 FINISHED DIMENSIONS ARE TO BE USED IN REFERENCE TO SCALE DIMENSIONS.
 IF THIS DRAWING EXCEEDS THE QUANTITIES TAKEN IN ANY WAY THE ARCHITECTS ARE TO BE INFORMED BEFORE THE WORK IS INITIATED.
 DESIGN COMPANY

MATERIALS KEY
 ——— BRICKWORK
 ——— BLOCKWORK
 ——— STONE
 ——— 100mm PARTITION
 ——— 150mm PARTITION
 ——— 225mm PARTITION
 TO BE USED IN CONNECTION WITH DRAWING NUMBER 100-115

REV P 11.12.95
 REV Q 05.14.95
 REV R 03.08.95
 REV S 14.05.95
 REV T 25.05.95
 REV U 01.06.95
 REV V 17.06.95
 REV W 18.06.95
 REV X 22.06.95
 REV Y 23.06.95
 REV Z 18.12.95

SEIFERT
 ARCHITECTS
 AND CIVIL ENGINEERS
 LONDON WC2A 3JF

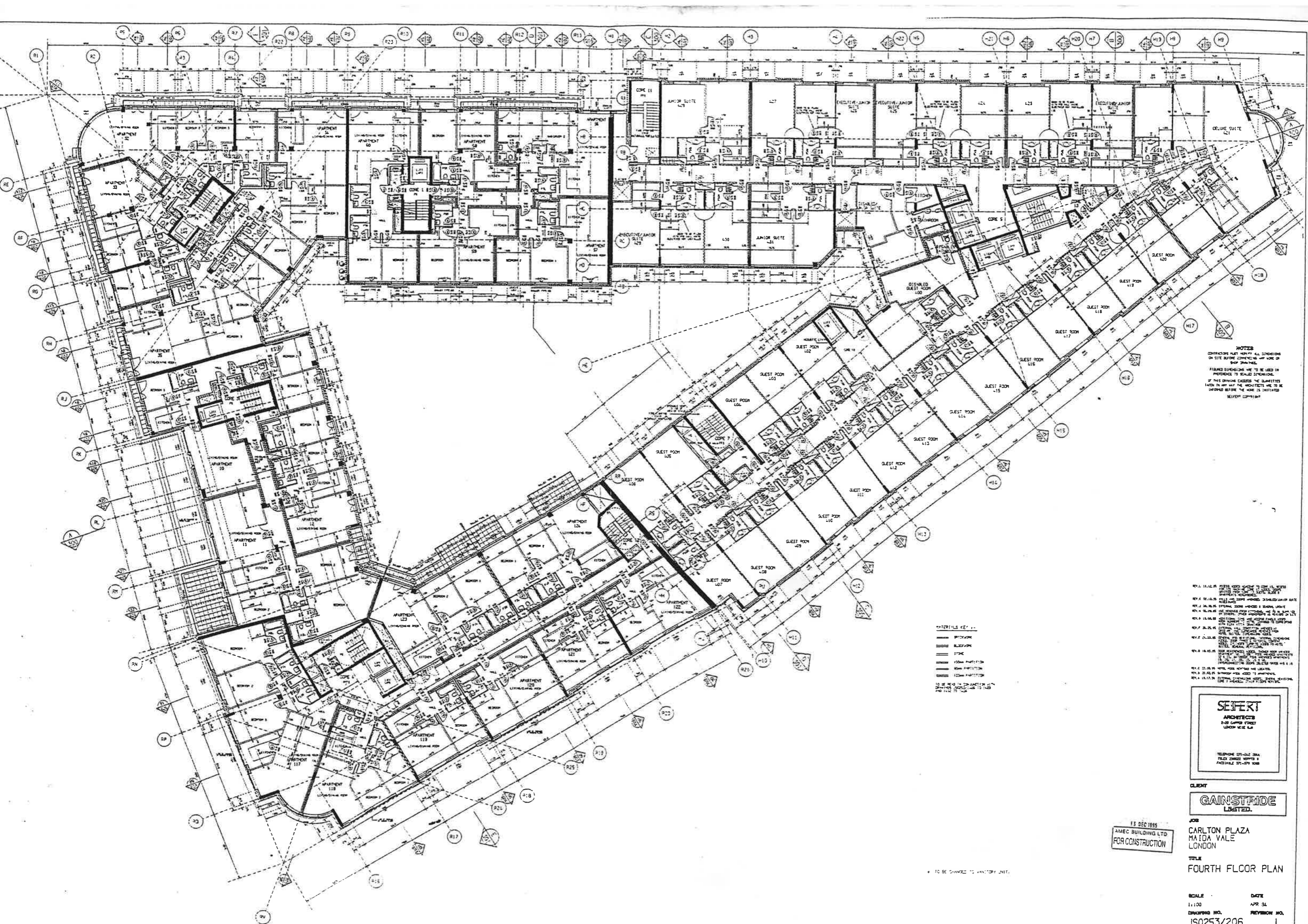
GAINSTRIDE LIMITED

15 DEC 1995
 AMEC BUILDING LTD
 FOR CONSTRUCTION

CLIENT
 JOB
 CARLTON PLAZA
 MAIDA VALE
 LONDON

TITLE
 THIRD FLOOR PLAN

SCALE
 1:100
DATE
 APP 94
DRAWING NO.
 JS0253/205
REVISION NO.
 P



NOTES
 CONTRACTORS MUST VERIFY ALL DIMENSIONS ON SITE BEFORE COMMENCING ANY WORK OR SHOP DRAWINGS.
 FINISHED DIMENSIONS ARE TO BE USED IN PREFERENCE TO UNFINISHED DIMENSIONS.
 IF THIS DRAWING EXCEEDS THE QUANTITIES LISTS IN ANY WAY THE CONTRACTORS ARE TO BE INFORMED BEFORE THE WORK IS INITIATED.
 SEIFERT CONTRACT

MATERIALS KEY

- BRICKWORK
- BLOCKWORK
- STONE
- 150mm PARTITION
- 100mm PARTITION
- 125mm PARTITION

TO BE READ IN CONNECTION WITH DRAWINGS SHEETS 401 TO 405 AND 406 TO 408

REV. 11.12.95
 REV. 10.11.95
 REV. 09.10.95
 REV. 08.09.95
 REV. 07.08.95
 REV. 06.07.95
 REV. 05.06.95
 REV. 04.05.95
 REV. 03.04.95
 REV. 02.03.95
 REV. 01.02.95

SEIFERT
 ARCHITECTS
 2-10 GARDEN STREET
 LONDON WC2E 8EA

TELEPHONE 071-582 3366
 FACSIMILE 071-582 3368

CLIENT
GAINSTRIDE
 LISTED

13 DEC 1995
 AMEC BUILDING LTD
 FOR CONSTRUCTION

JOB
 CARLTON PLAZA
 MAIDA VALE
 LONDON

TITLE
 FOURTH FLOOR PLAN

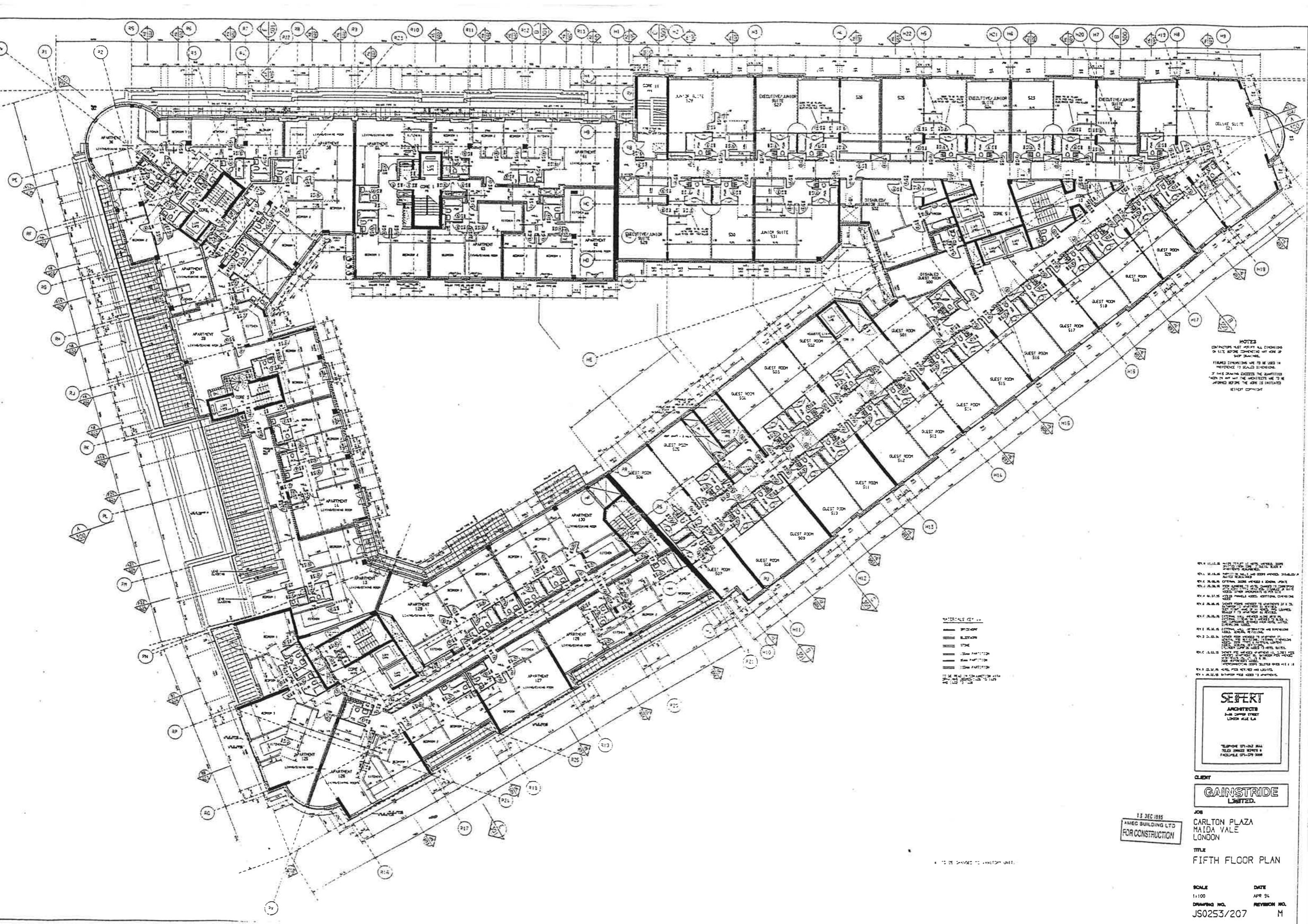
SCALE
 1:100

DATE
 APR 91

DRAWING NO.
 JS0253/206

REVISION NO.
 L

TO BE SHOWN TO ARCHITECT



NOTES
 CONTRACTOR MUST VERIFY ALL DIMENSIONS ON SITE BEFORE COMMENCING WORK AND REPORT ANY DISCREPANCIES TO THE ARCHITECT.
 DIMENSIONS SHOWN ARE TO BE USED IN REFERENCE TO SCALING DIMENSIONS.
 IF THIS DRAWING EXCEEDS THE CAPACITY OF THE PLOT AND THE ARCHITECT HAS TO BE APPROVED BY THE ARCHITECT, THE ARCHITECT IS NOT RESPONSIBLE FOR ANY ERRORS OR OMISSIONS.
 SEEFERT ARCHITECTS

- MATERIALS LIST**
- BRICKWORK
 - BLOCKWORK
 - CONCRETE
 - Gypsum Partition
 - Glass Partition
 - Steel Partition
 - Steel Reinforcement

SEEFERT
 ARCHITECTS
 2-18 DUNDY STREET
 LONDON W1E 6EX

CLIENT
GAINSTRIDE LIMITED

13 DEC 1995
 AMEC BUILDING LTD
 FOR CONSTRUCTION

JOB
 CARLTON PLAZA
 MAIDA VALE
 LONDON

TITLE
 FIFTH FLOOR PLAN

SCALE
 1:100

DATE
 APR 94

DRAWING NO.
 JS0253/207

REVISION NO.
 M



NOTES
 CONTRACTOR MUST VERIFY ALL DIMENSIONS
 ON SITE BEFORE COMMENCING ANY WORK OR
 BEFORE COMMENCING ANY WORK IN
 FINISHED CONDITIONS ARE TO BE USED IN
 PRECEDENCE TO SCALED DIMENSIONS.
 IF THIS DRAWING EXCEEDS THE QUANTITIES
 TAKEN IN VIEW BY THE ARCHITECTS ARE TO BE
 INFORMED BEFORE THE WORK IS INITIATED
 SEEFERT COPYRIGHT

MATERIALS KEY

- BRICKWORK
- BLOCKWORK
- STONE
- GYPSUM PARTITION
- GYPSUM PARTITION
- GYPSUM PARTITION
- GYPSUM PARTITION

NOTATION KEY

- PL PRESSURISED LOBBY
- PS PRESSURISED STAIR
- SV SHAKE VENT
- VS VENT SHAFT (S.W.)
- NV NATURALLY VENTILATED
- NVL NATURALLY VENTILATED LOBBY
- PS PIPE RISING SHAFT (NATURALLY VENTILATED)
- PPS PRESSURISED PIPE RISING SHAFT

NOTE 1

FOR FIRE USE TYPES AND FIRE WALLS
 REFER TO DRAWING NO. JS0253/208
 SHOWING THE FIRE RESISTANCE FROM
 GROUND FLOOR TO SEVENTH FLOOR.

- REV 1 11.02.95
- REV 2 11.02.95
- REV 3 11.02.95
- REV 4 11.02.95
- REV 5 11.02.95
- REV 6 11.02.95
- REV 7 11.02.95
- REV 8 11.02.95
- REV 9 11.02.95
- REV 10 11.02.95
- REV 11 11.02.95
- REV 12 11.02.95
- REV 13 11.02.95
- REV 14 11.02.95
- REV 15 11.02.95
- REV 16 11.02.95
- REV 17 11.02.95
- REV 18 11.02.95
- REV 19 11.02.95
- REV 20 11.02.95
- REV 21 11.02.95
- REV 22 11.02.95
- REV 23 11.02.95
- REV 24 11.02.95
- REV 25 11.02.95
- REV 26 11.02.95
- REV 27 11.02.95
- REV 28 11.02.95
- REV 29 11.02.95
- REV 30 11.02.95
- REV 31 11.02.95
- REV 32 11.02.95
- REV 33 11.02.95
- REV 34 11.02.95
- REV 35 11.02.95
- REV 36 11.02.95
- REV 37 11.02.95
- REV 38 11.02.95
- REV 39 11.02.95
- REV 40 11.02.95
- REV 41 11.02.95
- REV 42 11.02.95
- REV 43 11.02.95
- REV 44 11.02.95
- REV 45 11.02.95
- REV 46 11.02.95
- REV 47 11.02.95
- REV 48 11.02.95
- REV 49 11.02.95
- REV 50 11.02.95

SEEFERT
 ARCHITECTS
 25-26 CANAL STREET
 LONDON EC2A 4EA

TELEPHONE 071-252 5544
 FACSIMILE 071-252 5545
 TELEFAX 071-252 5546

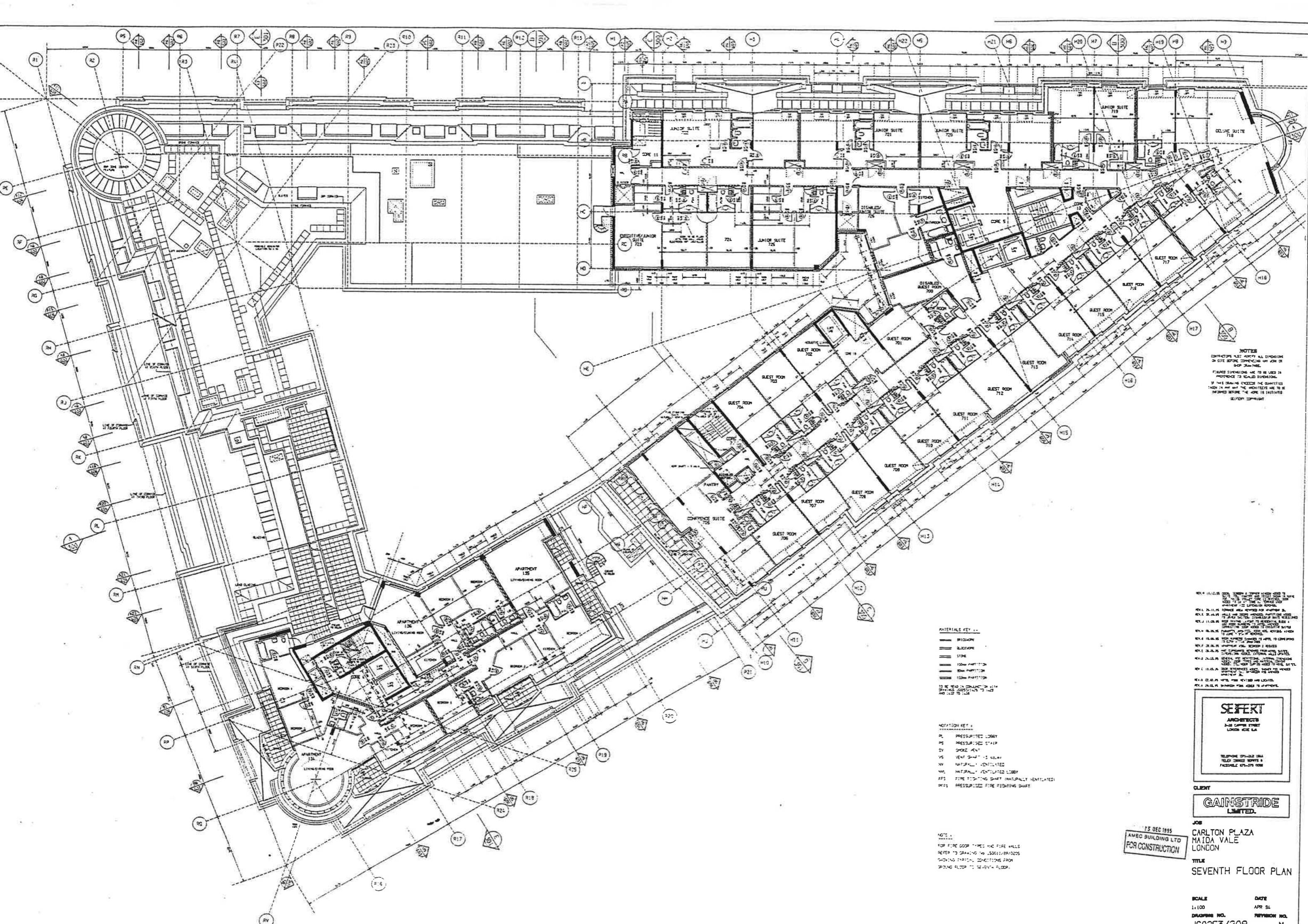
CLIENT
GAINSTRIDE LIMITED

17 DEC 1995
 AMEC BUILDING LTD
 FOR CONSTRUCTION

JOB
**CARLTON PLAZA
 MAIDON VALE
 LONDON**

TITLE
SIXTH FLOOR PLAN

SCALE 1:100
 DATE APR 94
 DRAWING NO. JS0253/208
 REVISION NO. Q



NOTES
 CONTRACTOR MUST VERIFY ALL DIMENSIONS ON SITE BEFORE COMMENCING ANY WORK OR SHOP DRAWINGS.
 DIMENSIONS SHOWN ARE TO BE USED IN PREFERENCE TO SCALE DIMENSIONS.
 IF THIS DRAWING EXCEEDS THE LIMITS OF A4 IN ANY WAY THE ARCHITECTURE USE TO BE SHOWN BEFORE THE WORK IS INITIATED WITHOUT CONSULTATION.

MATERIALS KEY

- BRICKWORK
- GLASS
- STONE
- 100mm PARTITION
- 50mm PARTITION
- 125mm PARTITION

TO BE USED IN CONNECTION WITH DRAWINGS REFERRED TO AND NOT TO SCALE

NOTATION KEY

- PL PRESSURIZED LOBBY
- PS PRESSURIZED STAIR
- DV SHAKE AWAY
- VS VENT SHAFT 150mm
- NV NATURALLY VENTILATED
- NVL NATURALLY VENTILATED LOBBY
- FFS FIRE FIGHTING SHIRT (NATURALLY VENTILATED)
- FFPS PRESSURIZED FIRE FIGHTING SHIRT

NOTE 1
 FOR FIRE COOP TYPES AND FIRE HALLS REFER TO DRAWING NO. JS0253/BR0205 SHOWING SPECIAL CONNECTIONS FROM SECOND FLOOR TO SEVENTH FLOOR.

REV A 11.03.95 CORRECT ROOM 701 TO BE 702
 REV B 11.03.95 CORRECT ROOM 702 TO BE 701
 REV C 11.03.95 CORRECT ROOM 701 TO BE 702
 REV D 11.03.95 CORRECT ROOM 702 TO BE 701
 REV E 11.03.95 CORRECT ROOM 701 TO BE 702
 REV F 11.03.95 CORRECT ROOM 702 TO BE 701
 REV G 11.03.95 CORRECT ROOM 701 TO BE 702
 REV H 11.03.95 CORRECT ROOM 702 TO BE 701
 REV I 11.03.95 CORRECT ROOM 701 TO BE 702
 REV J 11.03.95 CORRECT ROOM 702 TO BE 701
 REV K 11.03.95 CORRECT ROOM 701 TO BE 702
 REV L 11.03.95 CORRECT ROOM 702 TO BE 701
 REV M 11.03.95 CORRECT ROOM 701 TO BE 702
 REV N 11.03.95 CORRECT ROOM 702 TO BE 701
 REV O 11.03.95 CORRECT ROOM 701 TO BE 702
 REV P 11.03.95 CORRECT ROOM 702 TO BE 701
 REV Q 11.03.95 CORRECT ROOM 701 TO BE 702
 REV R 11.03.95 CORRECT ROOM 702 TO BE 701
 REV S 11.03.95 CORRECT ROOM 701 TO BE 702
 REV T 11.03.95 CORRECT ROOM 702 TO BE 701
 REV U 11.03.95 CORRECT ROOM 701 TO BE 702
 REV V 11.03.95 CORRECT ROOM 702 TO BE 701
 REV W 11.03.95 CORRECT ROOM 701 TO BE 702
 REV X 11.03.95 CORRECT ROOM 702 TO BE 701
 REV Y 11.03.95 CORRECT ROOM 701 TO BE 702
 REV Z 11.03.95 CORRECT ROOM 702 TO BE 701

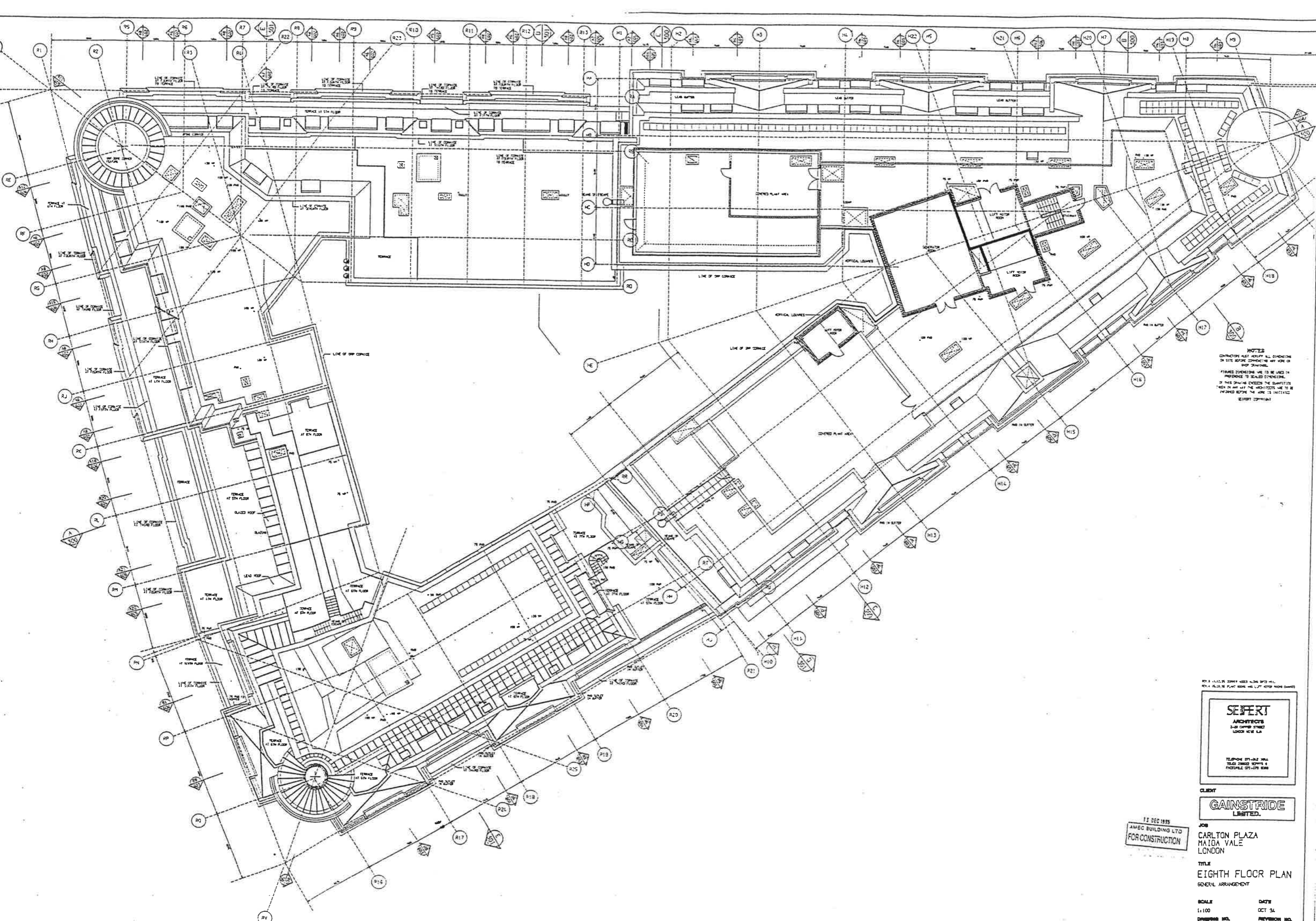
SEPERT
 ARCHITECTS
 3-10 CANNON STREET
 LONDON EC4A 3DF
 TELEPHONE 071-462 8844
 TELE FAX 071-462 8844
 FACSIMILE 071-462 8844

CLIENT
GAINSTRIDE LIMITED.

15 DEC 1995
 AMEC BUILDING LTD
 FOR CONSTRUCTION

JOB
 CARLTON PLAZA
 MAIDA VALE
 LONDON
TITLE
 SEVENTH FLOOR PLAN

SCALE
 1:100
DATE
 APR 94
DRAWING NO.
 JS0253/209
REVISION NO.
 M



NOTES
 CONTRACTOR MUST VERIFY ALL DIMENSIONS ON SITE BEFORE COMMENCING ANY WORK OR SHOP DRAWINGS.
 DIMENSIONS SHOWN ARE TO BE USED IN PREFERENCE TO SCALED DIMENSIONS.
 IF THIS DRAWING EXCEEDS THE QUANTITIES SET IN ANY OF THE ARCHITECTS USE TO BE PROVIDED BEFORE THE WORK IS INITIATED.
 SEPERT COPYRIGHT

REV 3 1/12/75 20004 USED ALONG WITH H-1.
 REV 4 1/12/75 PLANT ROOMS AND LIFT HOOD ROOMS DASHED

SEPERT
 ARCHITECTS
 2-10 CANNON STREET
 LONDON EC1A 3JA

TELEPHONE 071-462 3664
 TELEGRAMS SEPERTS &
 FACSIMILE 071-462 3664

CLIENT
GAINSTRIDE LIMITED.

13 DEC 1985
 AMEC BUILDING LTD
 FOR CONSTRUCTION

JOB
CARLTON PLAZA
 MAIDEN VALE
 LONDON

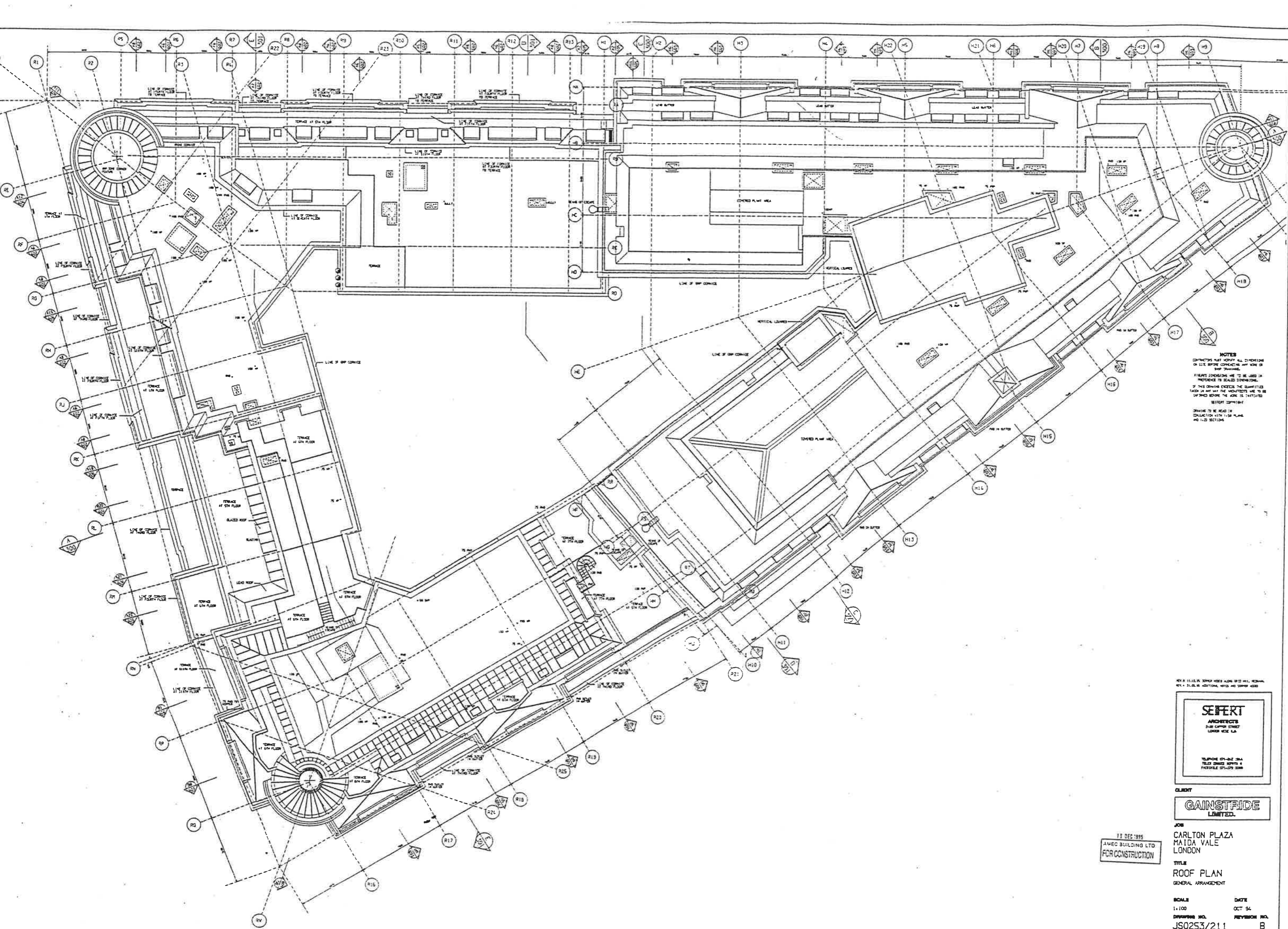
TITLE
EIGHTH FLOOR PLAN
 GENERAL ARRANGEMENT

SCALE
 1:100

DATE
 OCT 84

DRAWING NO.
 IS0253/210

REVISION NO.
 0



NOTES
 CONTRACTORS MUST VERIFY ALL DIMENSIONS ON SITE BEFORE COMMENCING ANY WORK OR SHOP DRAWINGS.
 DIMENSIONS SHOWN ARE TO BE USED IN PREFERENCE TO SCALED DIMENSIONS.
 IF THIS DRAWING EXCEEDS THE QUANTITIES TAKEN IN ANY WAY THE CONTRACTOR IS TO BE RESPONSIBLE BEFORE THE WORK IS INITIATED.
 REVERT COMMENT
 DRAWING TO BE READ IN CONJUNCTION WITH 1:50 PLANS AND 1:25 SECTIONS.

REV. 8 11.11.14 1:50 PLAN 1:25 SECTION
 REV. 7 21.05.14 1:50 PLAN 1:25 SECTION

SEPERT
 ARCHITECTS
 100 CANNON STREET
 LONDON EC3A 3DF
 TEL: 020 7424 3444
 FAX: 020 7424 3445
 WWW: SEPERT.COM

CLIENT
GAINSFIDE LIMITED.

11 DEC 1995
 AMEC BUILDING LTD
 FOR CONSTRUCTION

JOB
 CARLTON PLAZA
 MAIDA VALE
 LONDON

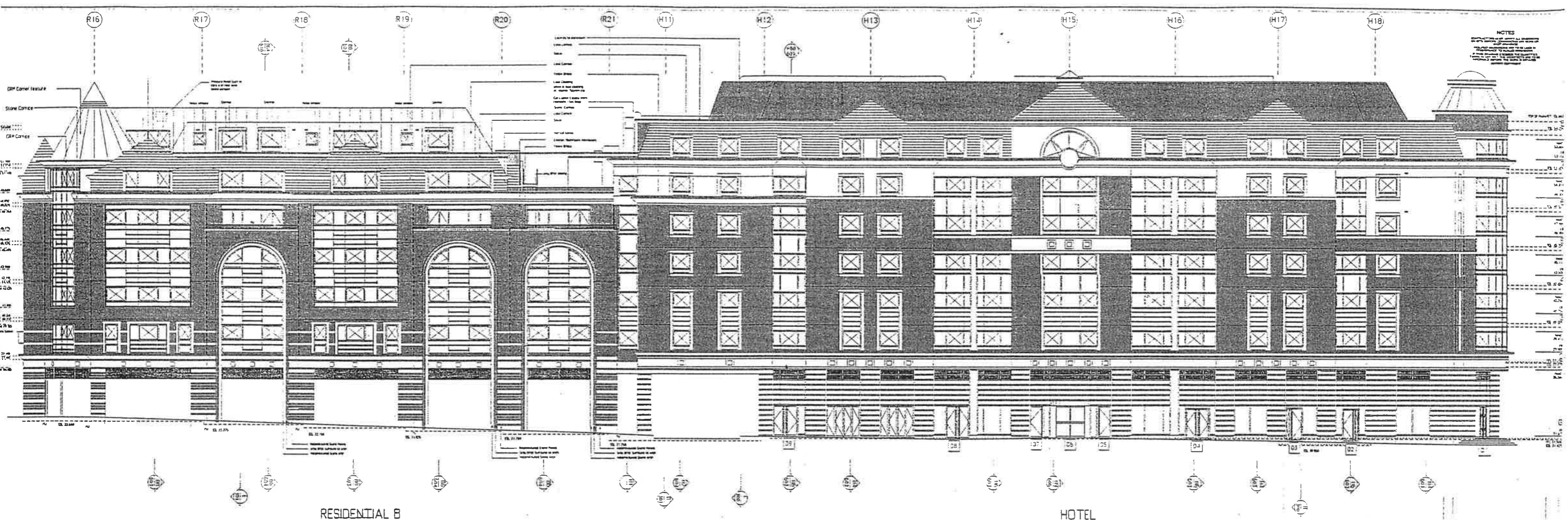
TITLE
 ROOF PLAN
 GENERAL ARRANGEMENT

SCALE
 1:100

DATE
 OCT 94

DRAWING NO.
 JS0253/211

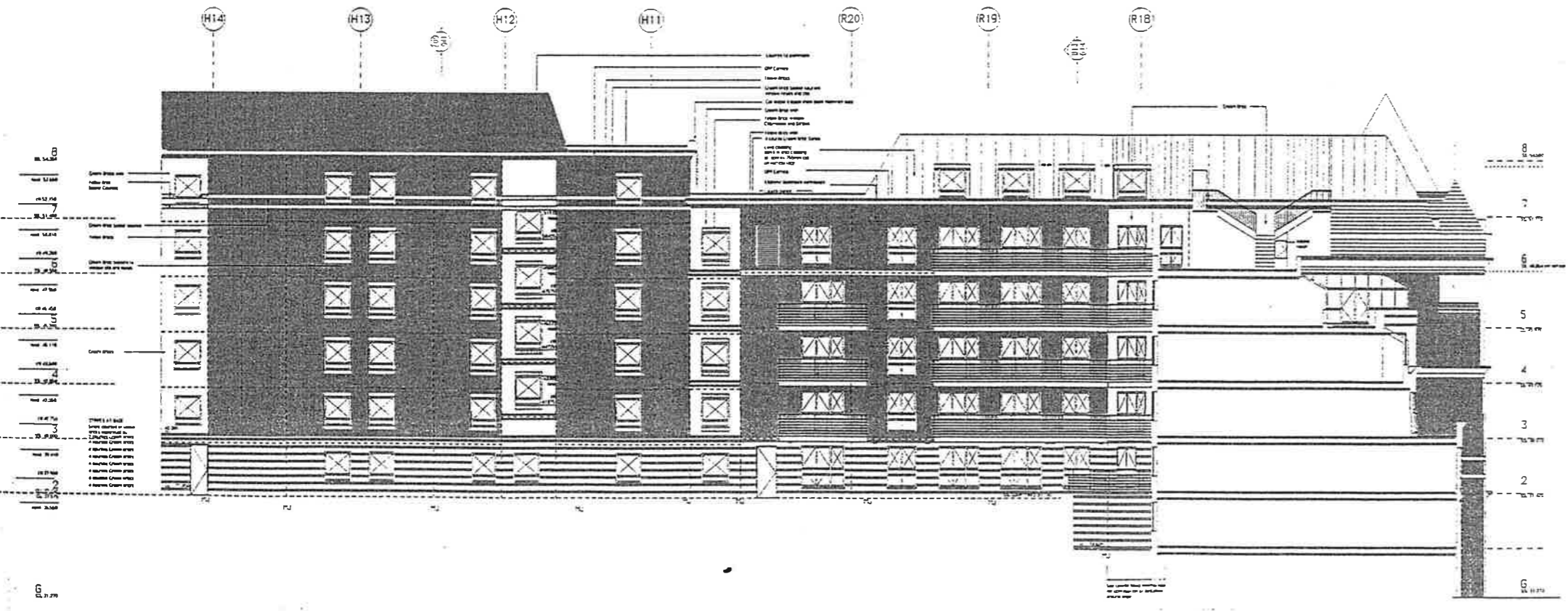
REVISION NO.
 B



MAIDA VALE ELEVATION

RESIDENTIAL 8

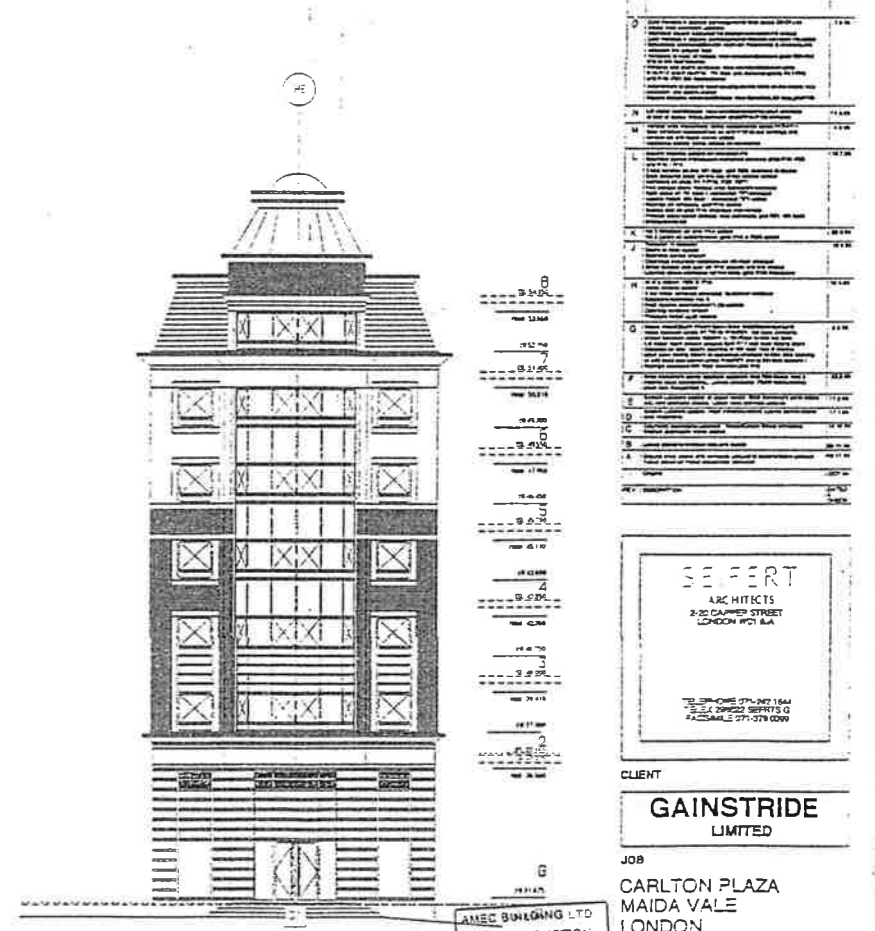
HOTEL



INTERNAL COURT ELEVATION TO REAR OF MAIDA VALE

HOTEL

RESIDENTIAL 8



ELEVATION ON H9

NOTES

1	...
2	...
3	...
4	...
5	...
6	...
7	...
8	...
9	...
10	...
11	...
12	...
13	...
14	...
15	...
16	...
17	...
18	...
19	...
20	...
21	...
22	...
23	...
24	...
25	...
26	...
27	...
28	...
29	...
30	...

SEPERT
 ARCHITECTS
 25 GOWER STREET
 LONDON WC1E 6BT

CLIENT
GAINSTRIDE LIMITED

JOB
 CARLTON PLAZA
 MAIDA VALE
 LONDON

TITLE
 MAIDA VALE
 ELEVATIONS
 HOTEL / Pr. 8 RESIDENTIAL

SCALE
 1:100
 DRAWING NO.
 JS0253/GA/400

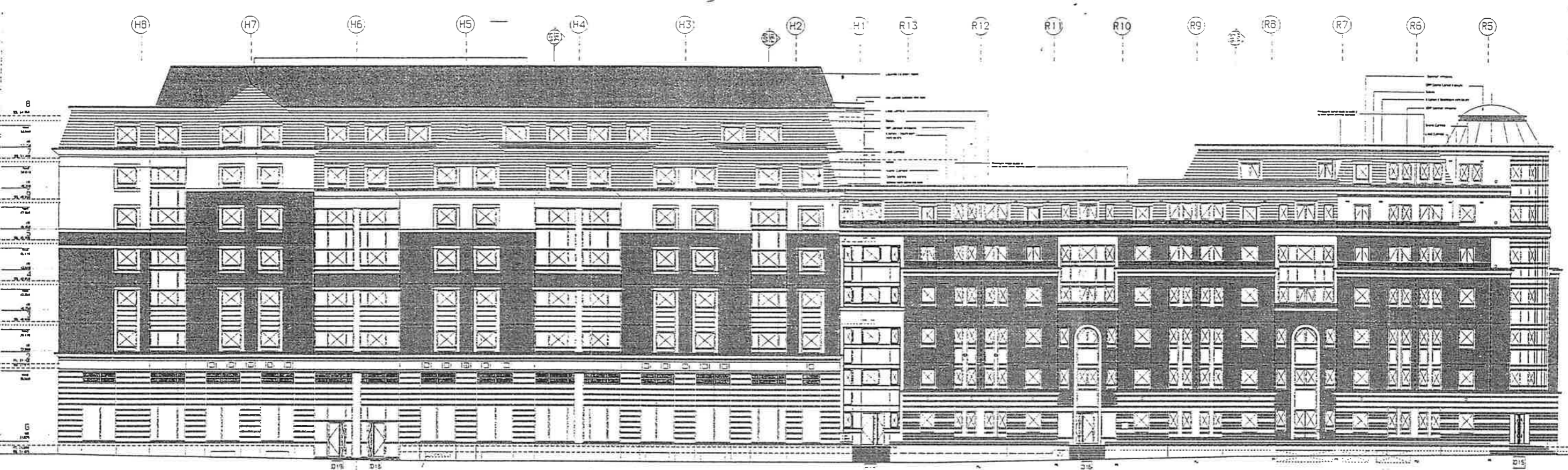
AMEC BUILDING LTD
 FOR CONSTRUCTION

AMEC BUILDING LTD
 CARLTON PLAZA
 14 SEP 1955

RECEIVED

DRAWN BY
 SH / FK / PH
 REVISION NO.
 0

NOTES
 1. All elevations are to be in accordance with the approved plans.
 2. All elevations are to be in accordance with the approved plans.
 3. All elevations are to be in accordance with the approved plans.
 4. All elevations are to be in accordance with the approved plans.
 5. All elevations are to be in accordance with the approved plans.



ELEVATION TO KILBURN PRIORY

HOTEL

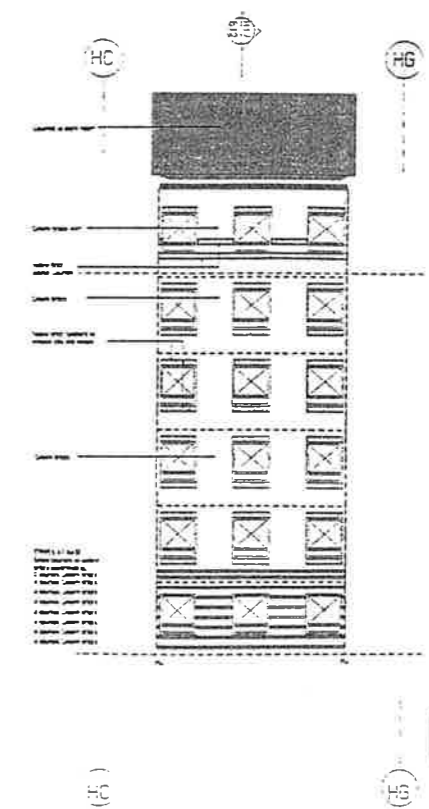
RESIDENTIAL A



INTERNAL COURTYARD ELEVATIONS TO REAR OF KILBURN PRIORY

RESIDENTIAL A

HOTEL



HOTEL

NO.	DESCRIPTION	DATE
1
2
3
4
5
6
7
8
9
10
11
12
13
14
15
16
17
18
19
20

SEIFERT
 ARCHITECTS
 230 CANNON STREET
 LONDON WC1N 1BA
 TELEPHONE 071-403 1844
 TELEX 24622 SEIFERT G
 FACSIMILE 071-479 1099

CLIENT
GAINSTRIDE LIMITED

JOB
**CARLTON PLAZA
 MAIDA VALE
 LONDON**

TITLE
**KILBURN PRIORY
 ELEVATIONS
 HOTEL & PHA RESIDENTIAL**

AMEC BUILDING LTD
 FOR CONSTRUCTION

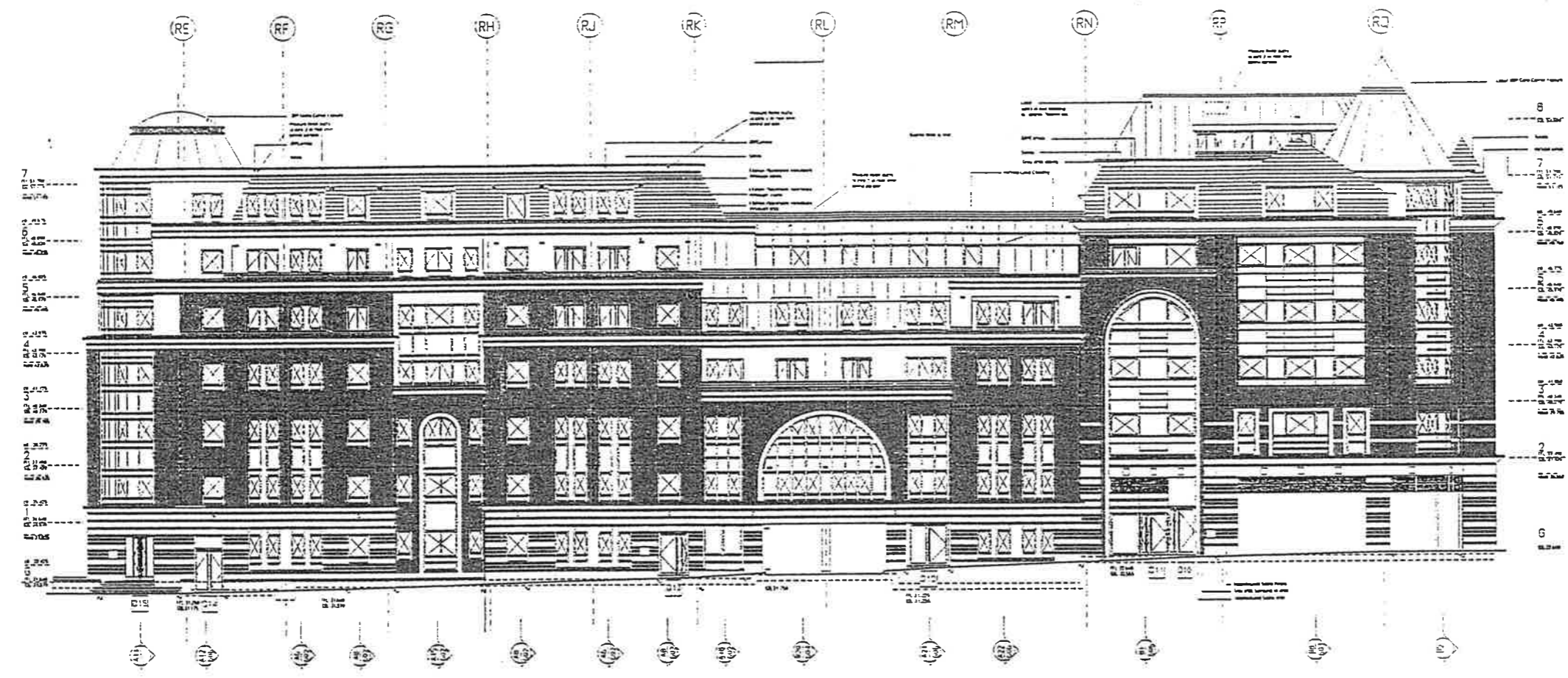
AMEC BUILDING LTD
 CARLTON PLAZA
 14 SEP 1995

RECEIVED

SCALE
 1:100
 DRAWING NO.
 JS0253/GA/401

DRAWN BY
 IH/KFKH
 REVISION NO.
 P

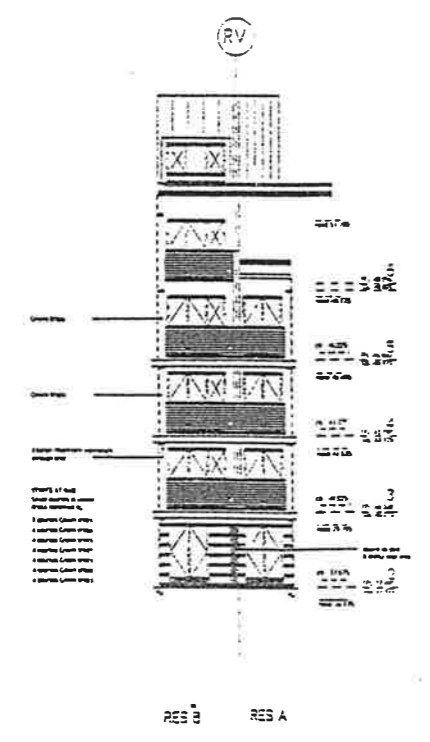
NOTES



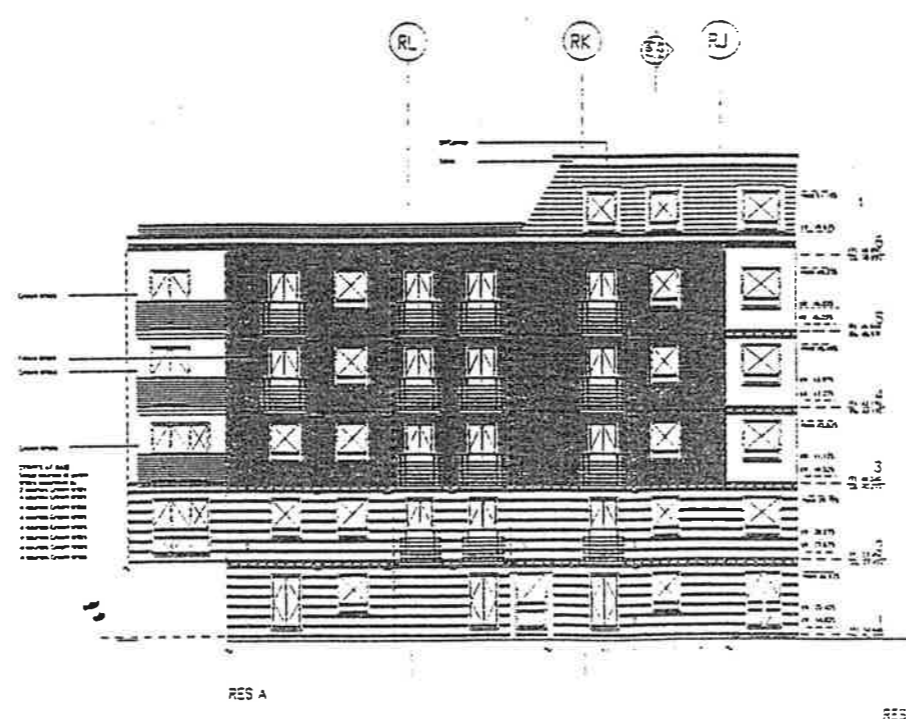
ELEVATION TO GREVILLE RD

RESIDENTIAL A

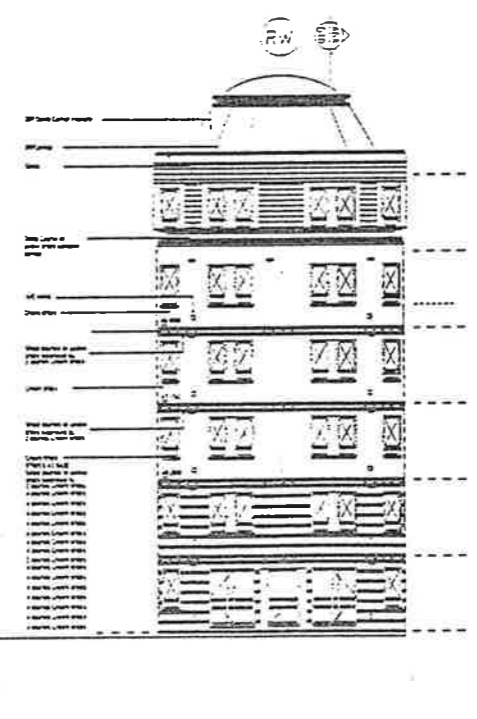
RESIDENTIAL B



INTERNAL COURTYARD ELEVATIONS TO REAR OF GREVILLE RD



RESIDENTIAL A



RESIDENTIAL A

- 1. General notes to be read in conjunction with the contract documents.
- 2. The architect is not responsible for the accuracy of the information provided by the client.
- 3. The architect is not responsible for the accuracy of the information provided by the client.
- 4. The architect is not responsible for the accuracy of the information provided by the client.
- 5. The architect is not responsible for the accuracy of the information provided by the client.
- 6. The architect is not responsible for the accuracy of the information provided by the client.
- 7. The architect is not responsible for the accuracy of the information provided by the client.
- 8. The architect is not responsible for the accuracy of the information provided by the client.
- 9. The architect is not responsible for the accuracy of the information provided by the client.
- 10. The architect is not responsible for the accuracy of the information provided by the client.

SE FERT
 ARCHITECTS
 1-100 CAMDEN STREET
 LONDON EC1A 1BB

CLIENT
GAINSTRIDE LIMITED

AMEC BUILDING LTD
 FOR CONSTRUCTION

AMEC BUILDING
 CARLTON PL
 14 SEP 1995
 RECEIVE

JOB
 CARLTON PLAZA
 MAIDA VALE
 LONDON
 TITLE
 GREVILLE ROAD
 ELEVATIONS
 Ph A & B RESIDENTIAL
 SCALE 1:100 DRAWN BY IHPH
 DRAWING NO. REVISION NO.
 JS0253/402