

- LEGEND**
- +/- 0.00m FFL on GF = +4.64m AMSL (*)
 - Existing
 - Demolition
 - Partitions between flats
 - Fire rated and sound proofing
 - Internal partitions

Technical housing standards
 -Minimum GIA and storage (m2)

| Type | A | B | C | D |
|----------------------------|----------|-----|-----|-----|
| N° of bedrooms (b) | 1b | 2b | 3b | 4b |
| N° of bed spaces (persons) | 1p | 4p | 6p | 6p |
| 1 storey dwellings | 39 (37)* | 70 | | |
| 2 storey dwellings | | 79 | 102 | 106 |
| Built-in storage | 1.0 | 2.0 | 2.5 | 3.0 |

| Flats | A | B | C | D |
|----------------------|---|---|---|---|
| Flats N° 1 | | B | | |
| Flats N° 2 - 9 - 16 | | B | | |
| Flats N° 3 - 10 - 17 | A | | | |
| Flats N° 4 - 11 - 18 | A | | | |
| Flats N° 5 - 12 - 19 | A | | | |
| Flats N° 6 - 13 - 20 | A | | | |
| Flats N° 7 - 14 - 21 | A | | | |
| Flats N° 8 - 15 - 22 | A | | | |
| Flats N° 23 - 26 | | | | D |
| Flats N° 24 - 25 | | | C | |

spaceAgent
 Architects and Designers
 London-Heidelberg-Barcelona-Brussels
 spaceAgent Architects Ltd is a RIBA Chartered Practice

Conversion to residential
 227 Shepherds Bush Road
 London W6 7AS

227 SBR LTD
 London

Ground floor plan
 as proposal

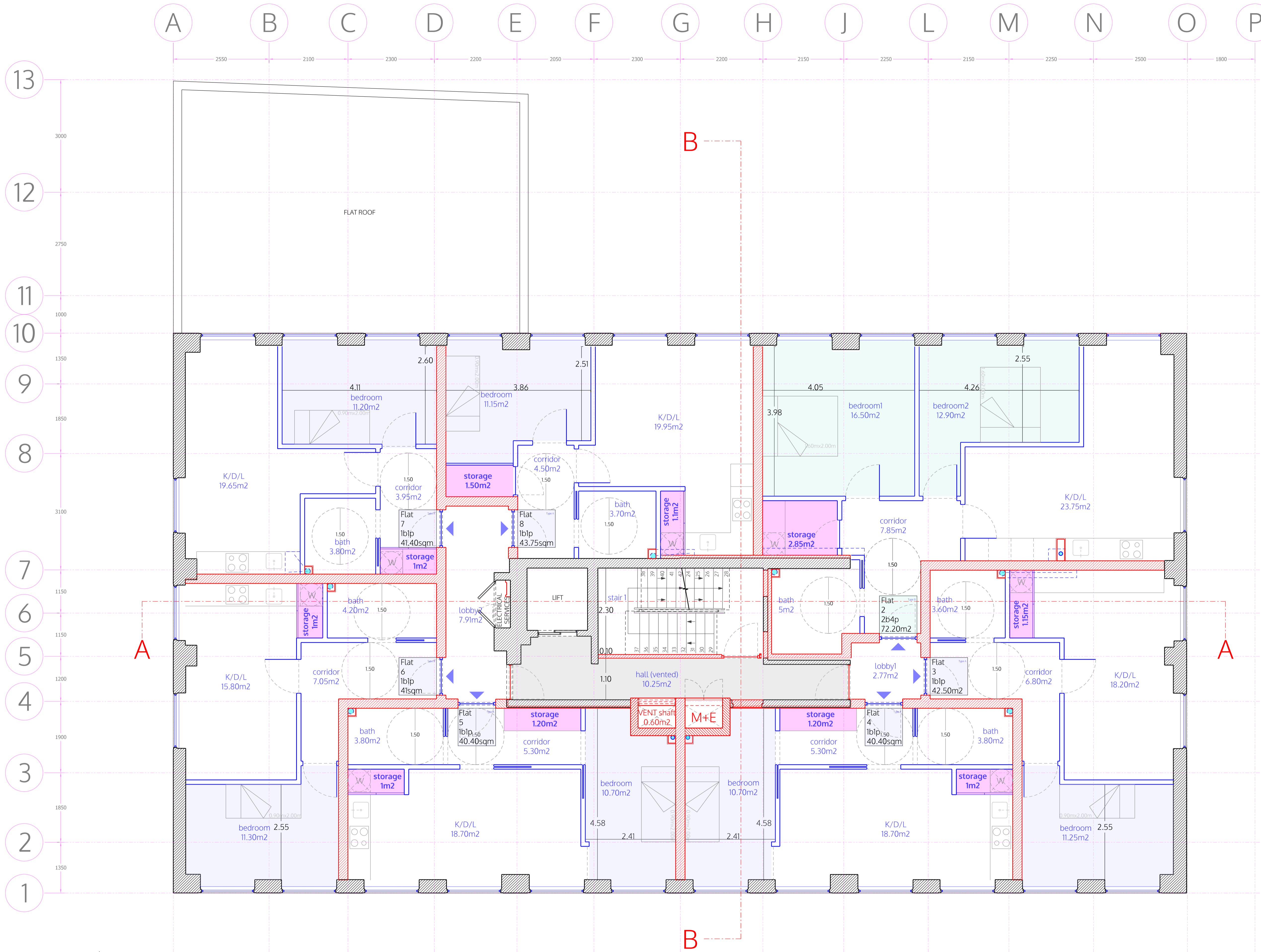
| | |
|--------------|-----------------------|
| DRAFT | |
| | 1:100 @A3 1:50 @A1 |
| | 7.04.2025 |
| | I.lezzi |

SHE_P01a10

no. drawn date scale status title client project © ALL COPYRIGHTS RESERVED m10

GROUND FLOOR

SHEPPERDS BUSH ROAD



- LEGEND**
- +/- 0.00m FFL on GF = +4.64m AMSL (*)
 - Existing
 - Demolition
 - Partitions between flats
 - Fire rated and sound proofing
 - Internal partitions

Technical housing standards
 -Minimum GIA and storage (m²)

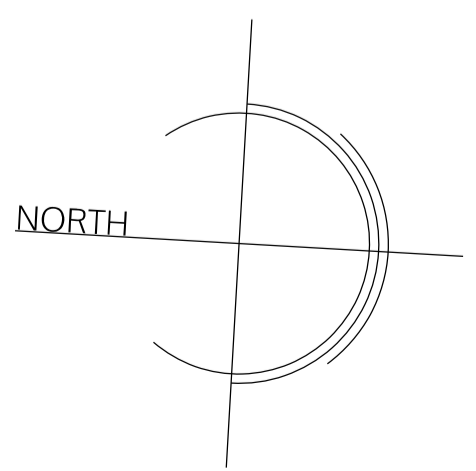
| Type | A | B | C | D |
|----------------------------|----------|-----|-----|-----|
| N° of bedrooms (b) | 1b | 2b | 3b | 4b |
| N° of bed spaces (persons) | 1p | 4p | 6p | 6p |
| 1 storey dwellings | 39 (37)* | 70 | | |
| 2 storey dwellings | | 79 | 102 | 106 |
| Built-in storage | 1.0 | 2.0 | 2.5 | 3.0 |

| Flats | A | B | C | D |
|----------------------|---|---|---|---|
| Flats N° 1 | | B | | |
| Flats N° 2 - 9 - 16 | | B | | |
| Flats N° 3 - 10 - 17 | A | | | |
| Flats N° 4 - 11 - 18 | A | | | |
| Flats N° 5 - 12 - 19 | A | | | |
| Flats N° 6 - 13 - 20 | A | | | |
| Flats N° 7 - 14 - 21 | A | | | |
| Flats N° 8 - 15 - 22 | A | | | |
| Flats N° 23 - 26 | | | | D |
| Flats N° 24 - 25 | | | C | |

spaceAgent
 Architects and Designers
 London-Heidelberg-Barcelona-Brussels
 spaceAgent Architects Ltd is a RIBA Chartered Practice

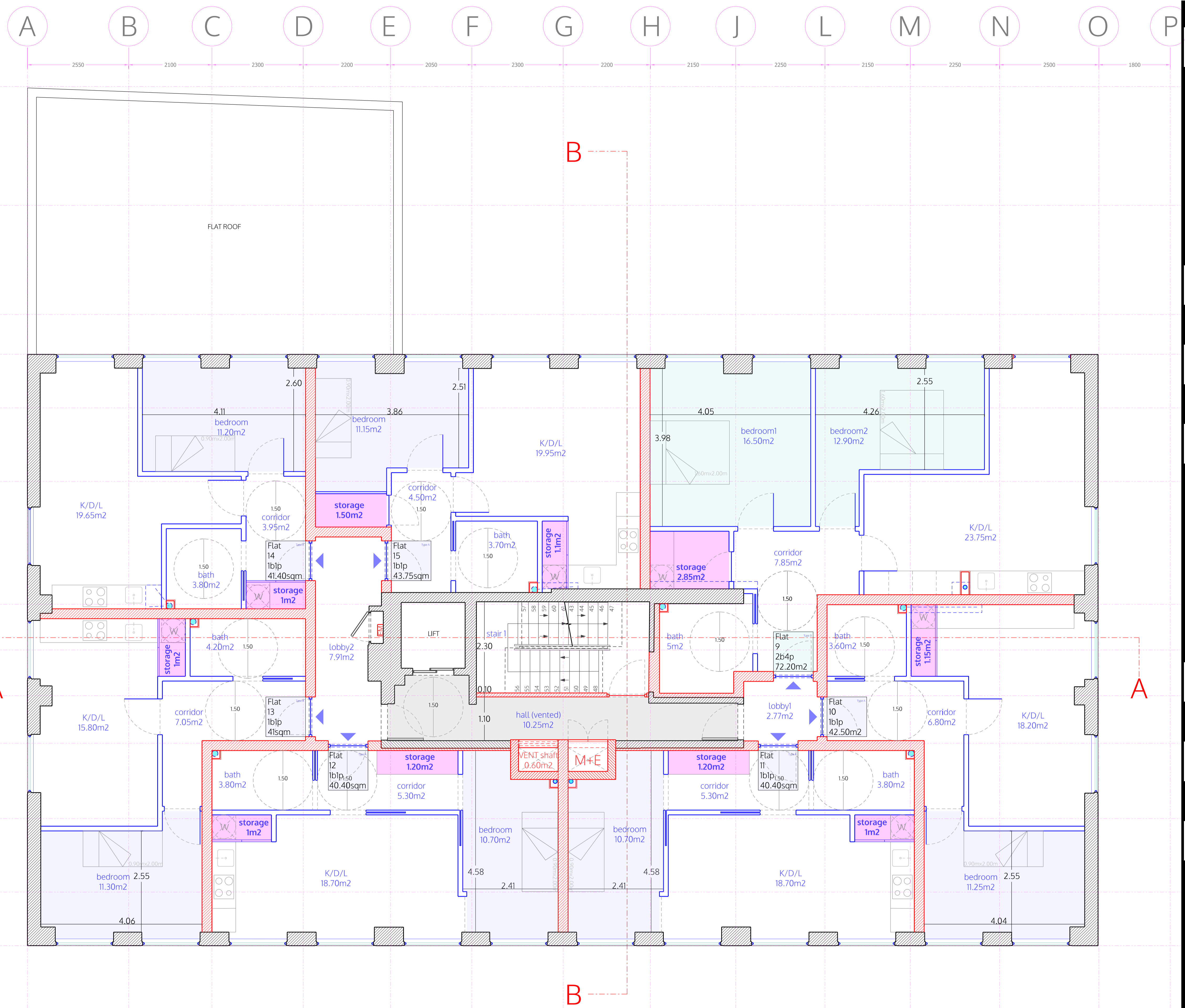
Conversion to residential
 227 Shepherds Bush Road
 London W6 7AS
 227 SBR LTD
 London
 First floor plan
 as proposed

| | |
|-------------------|----------|
| DRAFT | |
| 1:100 @A3 | 1:50 @A1 |
| 7.04.2025 | |
| I.lezzi | |
| SHE_P03a10 | |



FIRST FLOOR

no. drawn date scale status title client project © ALL COPYRIGHTS RESERVED m 0 1 2 3 4 5 ALL DIMENSIONS TO BE CHECKED ON SITE



- LEGEND**
- +/- 0.00m FFL on GF = +4.64m AMSL (*)
 - Existing
 - Demolition
 - Partitions between flats
 - Fire rated and sound proofing
 - Internal partitions

Technical housing standards
 -Minimum GIA and storage (m²)

| Type | A | B | C | D |
|----------------------------|----------|-----|-----|-----|
| N° of bedrooms (b) | 1b | 2b | 3b | 4b |
| N° of bed spaces (persons) | 1p | 4p | 6p | 6p |
| 1 storey dwellings | 39 (37)* | 70 | | |
| 2 storey dwellings | | 79 | 102 | 106 |
| Built-in storage | 1.0 | 2.0 | 2.5 | 3.0 |

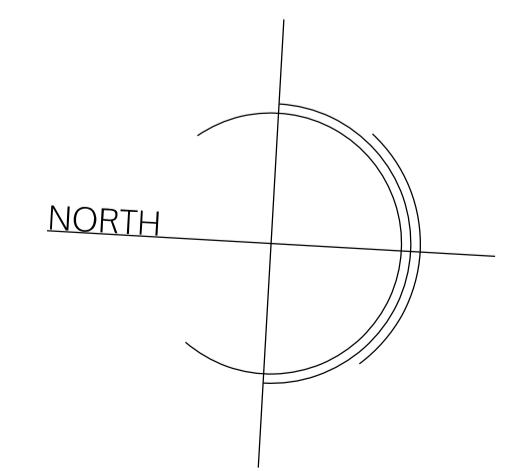
| Flats N° | A | B | C | D |
|----------------------|---|---|---|---|
| Flats N° 1 | | B | | |
| Flats N° 2 - 9 - 16 | | B | | |
| Flats N° 3 - 10 - 17 | A | | | |
| Flats N° 4 - 11 - 18 | A | | | |
| Flats N° 5 - 12 - 19 | A | | | |
| Flats N° 6 - 13 - 20 | A | | | |
| Flats N° 7 - 14 - 21 | A | | | |
| Flats N° 8 - 15 - 22 | A | | | |
| Flats N° 23 - 26 | | | | D |
| Flats N° 24 - 25 | | | C | |

spaceAgent
 Architects and Designers
 London-Heidelberg-Barcelona-Brussels
 spaceAgent Architects Ltd is a RIBA Chartered Practice

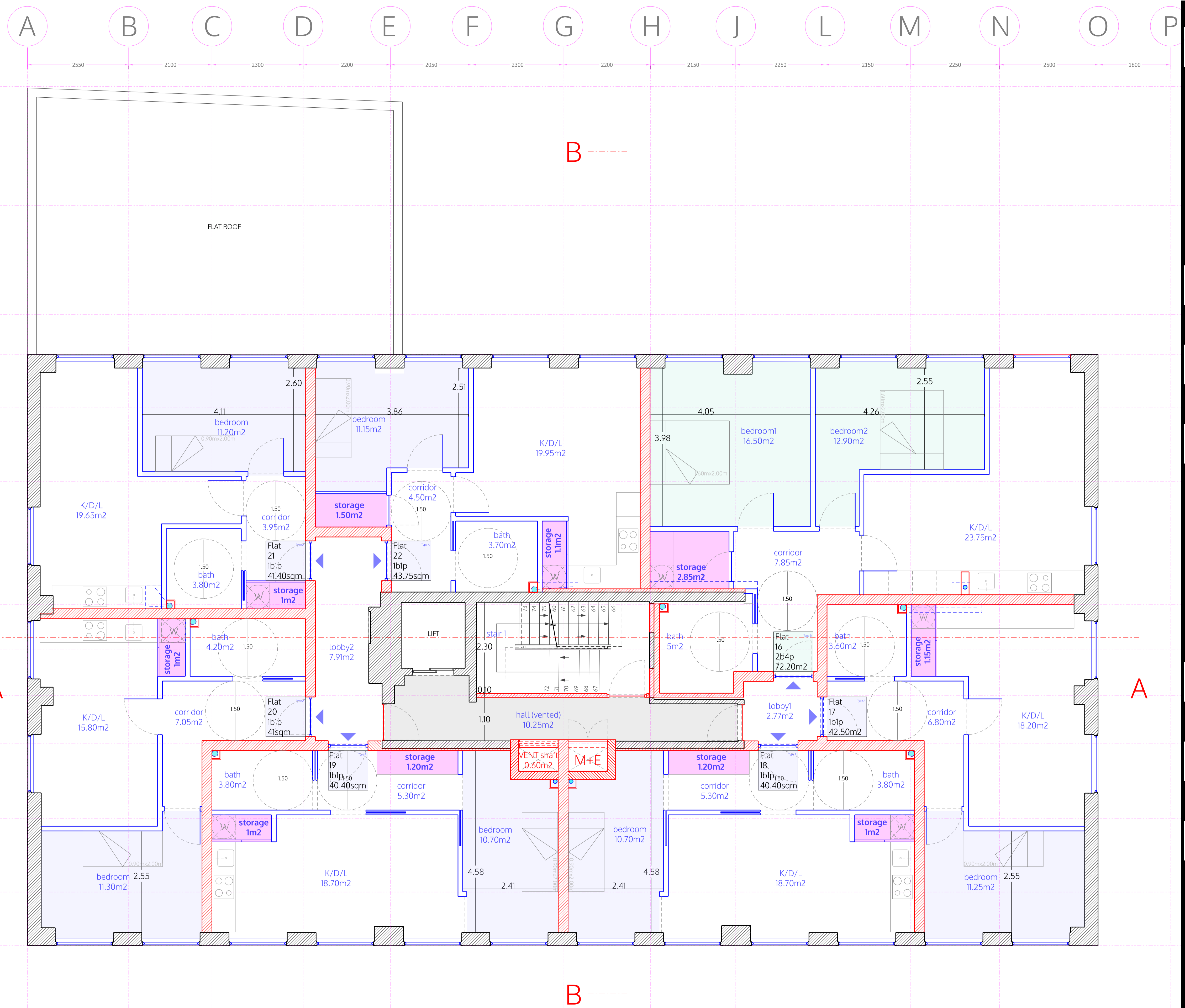
Conversion to residential
 227 Shepherds Bush Road
 London W6 7AS
 227 SBR LTD
 London
 Second floor plan
 as proposed

| | |
|-------------------|-----------------------|
| DRAFT | |
| | 1:100 @A3 1:50 @A1 |
| | 7.04.2025 |
| | I.lezzi |
| SHE_P04a10 | |

SECOND FLOOR



no. drawn date scale status title client project © ALL COPYRIGHTS RESERVED m 0



- LEGEND**
- +/- 0.00m FFL on GF = +4.64m AMSL (*)
 - Existing
 - Demolition
 - Partitions between flats
 - Fire rated and sound proofing
 - Internal partitions

Technical housing standards
 -Minimum GIA and storage (m²)

| Type | A | B | C | D |
|----------------------------|----------|-----|-----|-----|
| N° of bedrooms (b) | 1b | 2b | 3b | 4b |
| N° of bed spaces (persons) | 1p | 4p | 6p | 6p |
| 1 storey dwellings | 39 (37)* | 70 | | |
| 2 storey dwellings | | 79 | 102 | 106 |
| Built-in storage | 1.0 | 2.0 | 2.5 | 3.0 |

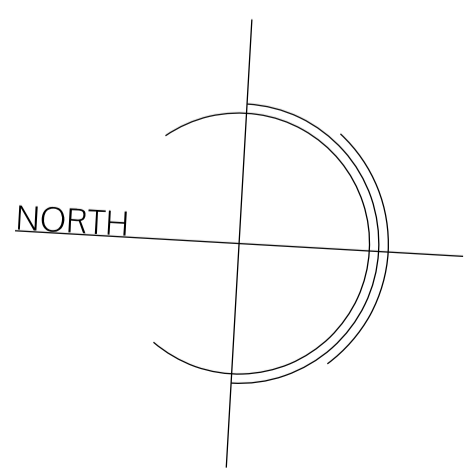
| Flats N° | A | B | C | D |
|----------------------|---|---|---|---|
| Flats N° 1 | | B | | |
| Flats N° 2 - 9 - 16 | | B | | |
| Flats N° 3 - 10 - 17 | A | | | |
| Flats N° 4 - 11 - 18 | A | | | |
| Flats N° 5 - 12 - 19 | A | | | |
| Flats N° 6 - 13 - 20 | A | | | |
| Flats N° 7 - 14 - 21 | A | | | |
| Flats N° 8 - 15 - 22 | A | | | |
| Flats N° 23 - 26 | | | | D |
| Flats N° 24 - 25 | | | C | |

spaceAgent
 Architects and Designers
 London-Heidelberg-Barcelona-Brussels
 spaceAgent Architects Ltd is a RIBA Chartered Practice

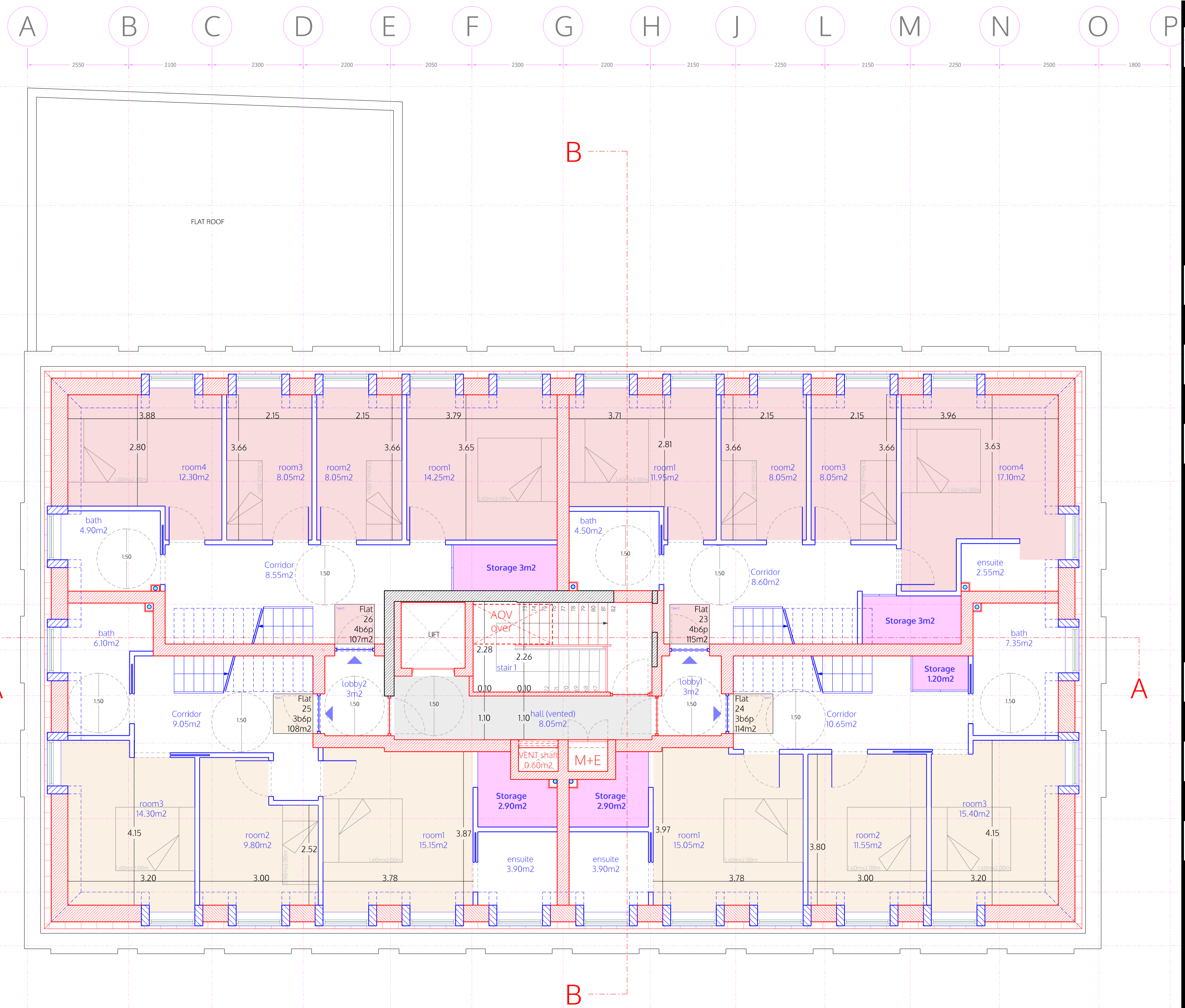
Conversion to residential
 227 Shepherds Bush Road
 London W6 7AS
 227 SBR LTD
 London
 Third floor plan
 as proposed

| | |
|-------------------|--|
| DRAFT | |
| 1:100 @A3 | |
| 1:50 @A1 | |
| 7.04.2025 | |
| I.lezzi | |
| SHE_P05a10 | |

no. drawn date scale status title client project © ALL COPYRIGHTS RESERVED m 0



THIRD FLOOR



- LEGEND**
- +/- 0.00m FFL on GF = +4.64m AMSL (*)
 - Existing
 - Demolition
 - Partitions between flats
 - Fire rated and sound proofing
 - Internal partitions

Technical housing standards
 -Minimum GIA and storage (m2)

| Type | A | B | C | D |
|----------------------------|----------|-----|-----|-----|
| N° of bedrooms (b) | 1b | 2b | 3b | 4b |
| N° of bed spaces (persons) | 1p | 4p | 6p | 6p |
| 1 storey dwellings | 39 (37)* | 70 | | |
| 2 storey dwellings | | 79 | 102 | 106 |
| Built-in storage | 1.0 | 2.0 | 2.5 | 3.0 |

| Flats | A | B | C | D |
|----------------------|---|---|---|---|
| Flats N° 1 | | B | | |
| Flats N° 2 - 9 - 16 | | B | | |
| Flats N° 3 - 10 - 17 | A | | | |
| Flats N° 4 - 11 - 18 | A | | | |
| Flats N° 5 - 12 - 19 | A | | | |
| Flats N° 6 - 13 - 20 | A | | | |
| Flats N° 7 - 14 - 21 | A | | | |
| Flats N° 8 - 15 - 22 | A | | | |
| Flats N° 23 - 26 | | | C | D |
| Flats N° 24 - 25 | | | C | |

spaceAgent
 Architects and Designers
 London-Heidelberg-Barcelona-Brussels
 spaceAgent Architects Ltd is a RIBA Chartered Practice

Conversion to residential
 227 Shepherds Bush Road
 London W6 7AS

227 SBR LTD
 London

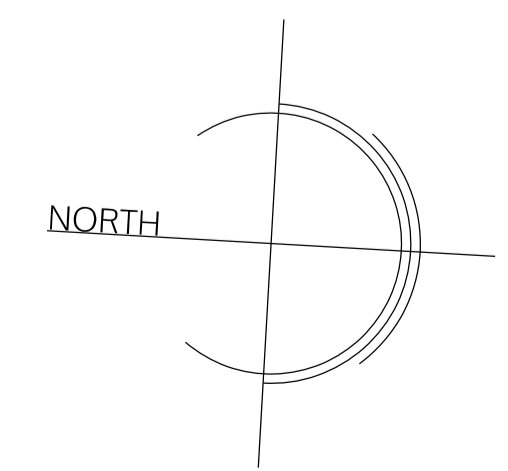
Fourth floor plan
 as proposed

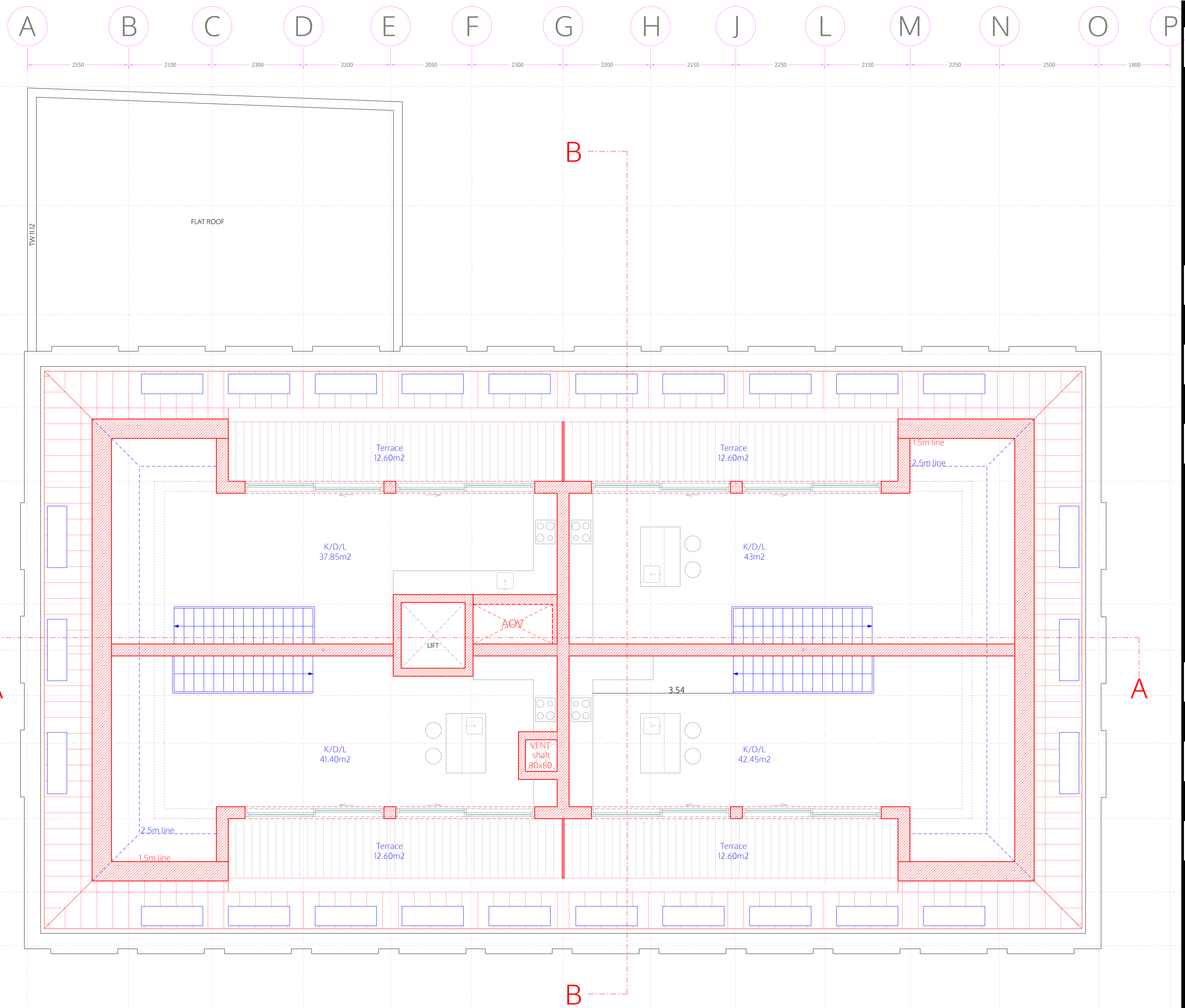
| | |
|--------------|----------|
| DRAFT | |
| 1:100 @A3 | 1:50 @A1 |
| 7.04.2025 | |
| I.lezzi | |

SHE_P06a10

no. drawn date scale status title client project © ALL COPYRIGHTS RESERVED m10

FOURTH FLOOR





- LEGEND**
- +/- 0.00m FFL on GF = +4.64m AMSL (*)
 - Existing
 - Demolition
 - Partitions between flats
 - Fire rated and sound proofing
 - Internal partitions

Technical housing standards
 -Minimum GIA and storage (m2)

| Type | A | B | C | D |
|----------------------------|----------|-----|-----|-----|
| N° of bedrooms (b) | 1b | 2b | 3b | 4b |
| N° of bed spaces (persons) | 1p | 4p | 6p | 6p |
| 1 storey dwellings | 39 (37)* | 70 | | |
| 2 storey dwellings | | 79 | 102 | 106 |
| Built-in storage | 1.0 | 2.0 | 2.5 | 3.0 |

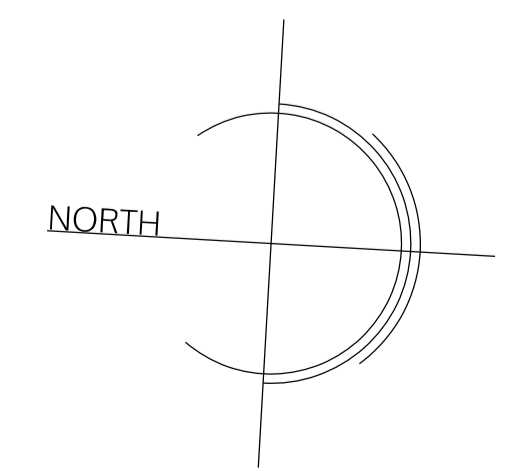
| Flats | A | B | C | D |
|----------------------|---|---|---|---|
| Flats N° 1 | | B | | |
| Flats N° 2 - 9 - 16 | | B | | |
| Flats N° 3 - 10 - 17 | A | | | |
| Flats N° 4 - 11 - 18 | A | | | |
| Flats N° 5 - 12 - 19 | A | | | |
| Flats N° 6 - 13 - 20 | A | | | |
| Flats N° 7 - 14 - 21 | A | | | |
| Flats N° 8 - 15 - 22 | A | | | |
| Flats N° 23 - 26 | | | | D |
| Flats N° 24 - 25 | | | C | |

spaceAgent
 Architects and Designers
 London-Heidelberg-Barcelona-Brussels
 spaceAgent Architects Ltd is a RIBA Chartered Practice

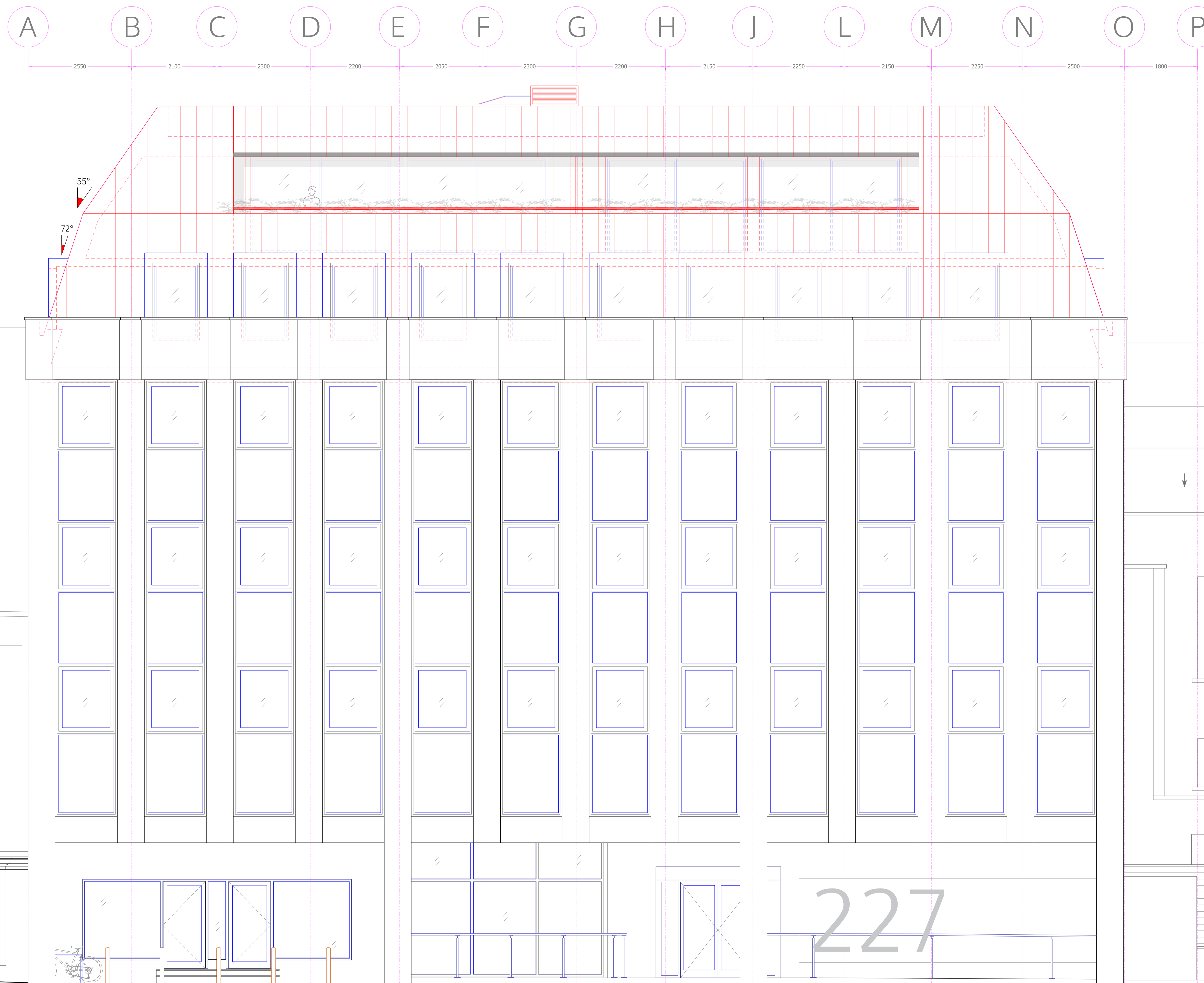
Conversion to residential
 227 Shepherds Bush Road
 London W6 7AS
 227 SBR LTD
 London
 Fifth floor plan
 as proposed

| | |
|-------------------|-----------------------|
| DRAFT | |
| | 1:100 @A3 1:50 @A1 |
| | 7.04.2025 |
| | I.lezzi |
| SHE_P07a10 | |

FIFTH FLOOR



no. drawn date scale status title client project © ALL COPYRIGHTS RESERVED m10



0.50 0.80 0.50.
 2 x SS cycle parking
 (commercial)
 2 x SS cycle parking
 (residential)

FRONT ELEVATION (WEST)

no. drawn date scale status title client project

ALL DIMENSIONS TO BE CHECKED ON SITE

© ALL COPYRIGHTS RESERVED

m 0

1 2 3 4 5

ROOF TILES WINDOW

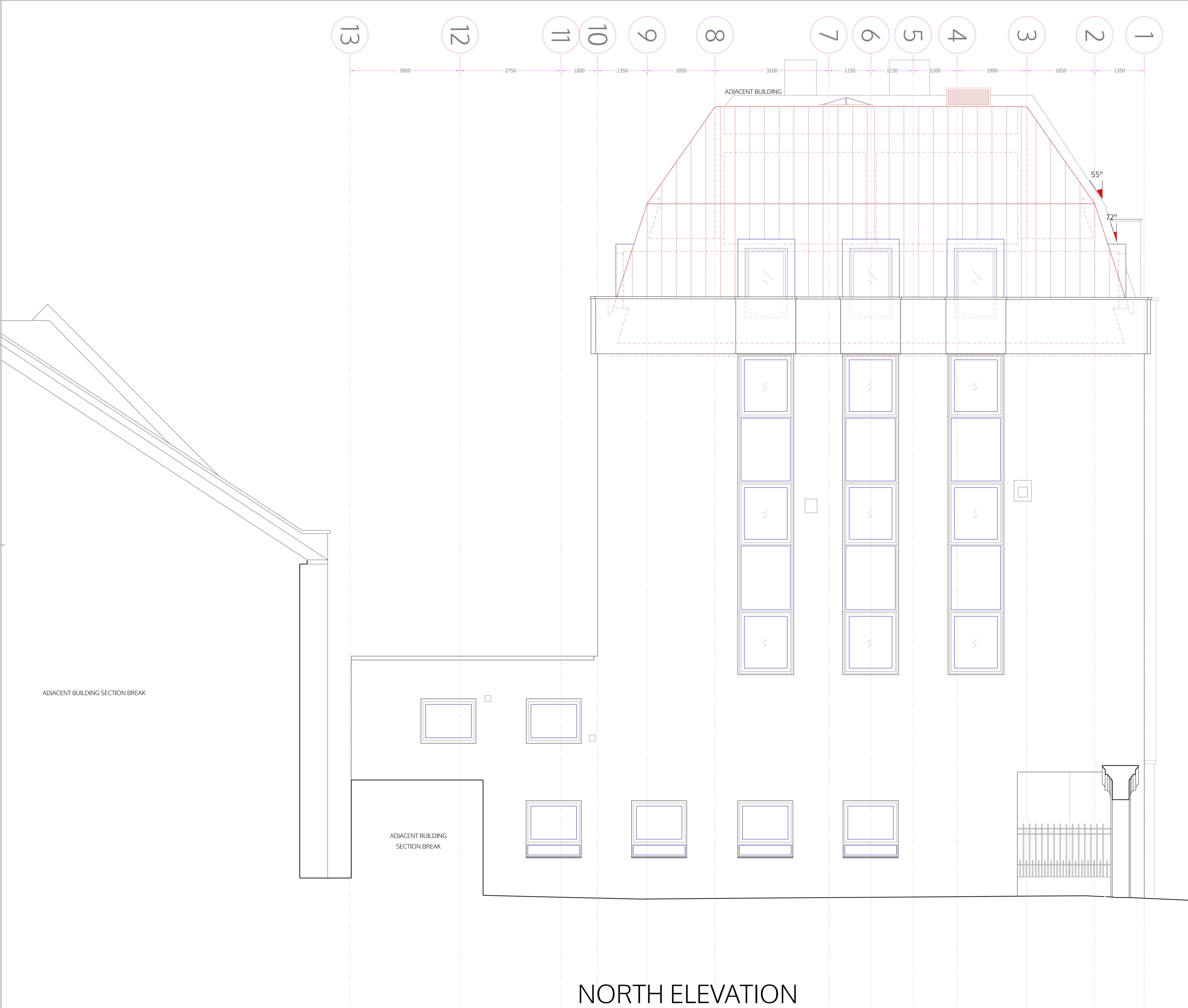
spaceAgent
 Architects and Designers mail@spaceagent.com
 London-Heidelberg-Barcelona-Brussels spaceagent.com
 spaceAgent Architects Ltd is a RIBA Chartered Practice

Conversion to residential
 227 Shepherds Bush Road
 London W6 7AS

227 SBR LTD
 London

Front elevation (West)
 as proposed

| | |
|------------|----------|
| DRAFT | |
| 1:100 @A3 | 1:50 @A1 |
| 7.04.2025 | |
| I.lezzi | |
| SHE_P08a10 | |



no. drawn date scale status title client project © ALL COPYRIGHTS RESERVED m 0 1 2 3 4 5 ALL DIMENSIONS TO BE CHECKED ON SITE

spaceAgent 
 Architects and Designers mail@spaceagent.com
 London-Heidelberg-Barcelona-Brussels spaceagent.com
 spaceAgent Architects Ltd is a RIBA Chartered Practice

Conversion to residential
 227 Shepherds Bush Road
 London W6 7AS

227 SBR LTD
 London

North elevation
 as proposed

| | |
|------------|-----------------------|
| DRAFT | |
| | 1:100 @A3 1:50 @A1 |
| | 7.04.2025 |
| | I.lezzi |
| SHE_P09a10 | |

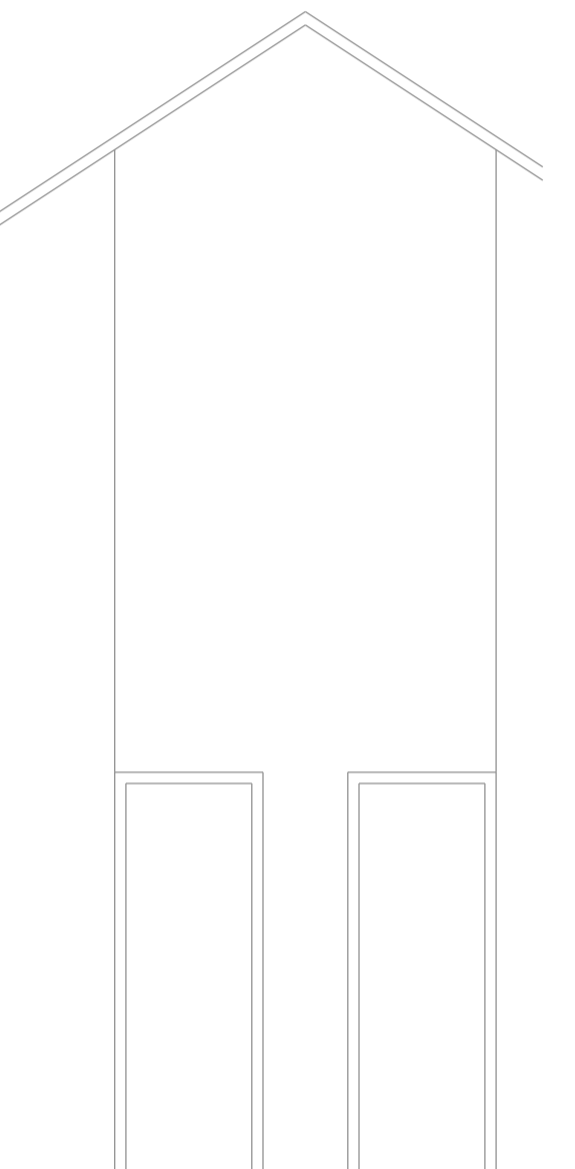
1 2 3 4 5 6 7 8 9 10 11 12 13

1350 1850 1900 1200 1150 1150 3100 1850 1350 1000 2750 3000



SOUTH ELEVATION

no. drawn date scale status title client project © ALL COPYRIGHTS RESERVED m 0 1 2 3 4 5 ALL DIMENSIONS TO BE CHECKED ON SITE



spaceAgent
 Architects and Designers mail@spaceagent.com
 London-Heidelberg-Barcelona-Brussels spaceagent.com
 spaceAgent Architects Ltd is a RIBA Chartered Practice

Conversion to residential
 227 Shepperds Bush Road
 London W6 7AS

227 SBR LTD
 London

South elevation
 as proposed

| | |
|------------|----------|
| DRAFT | |
| 1:100 @A3 | 1:50 @A1 |
| 7.04.2025 | |
| I.lezzi | |
| SHE_P10a10 | |

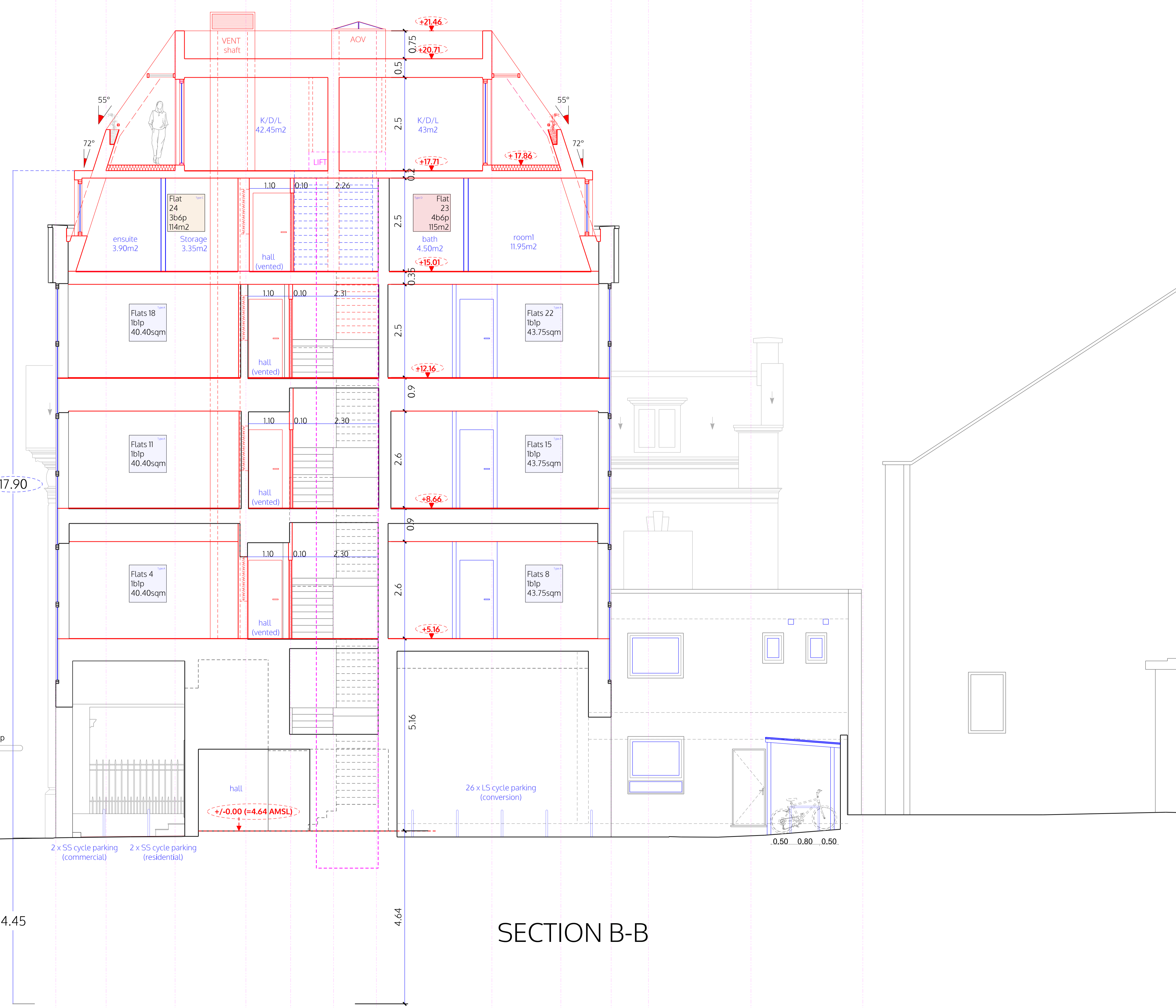
SHEPPERDS BUSH ROAD

Bus stop

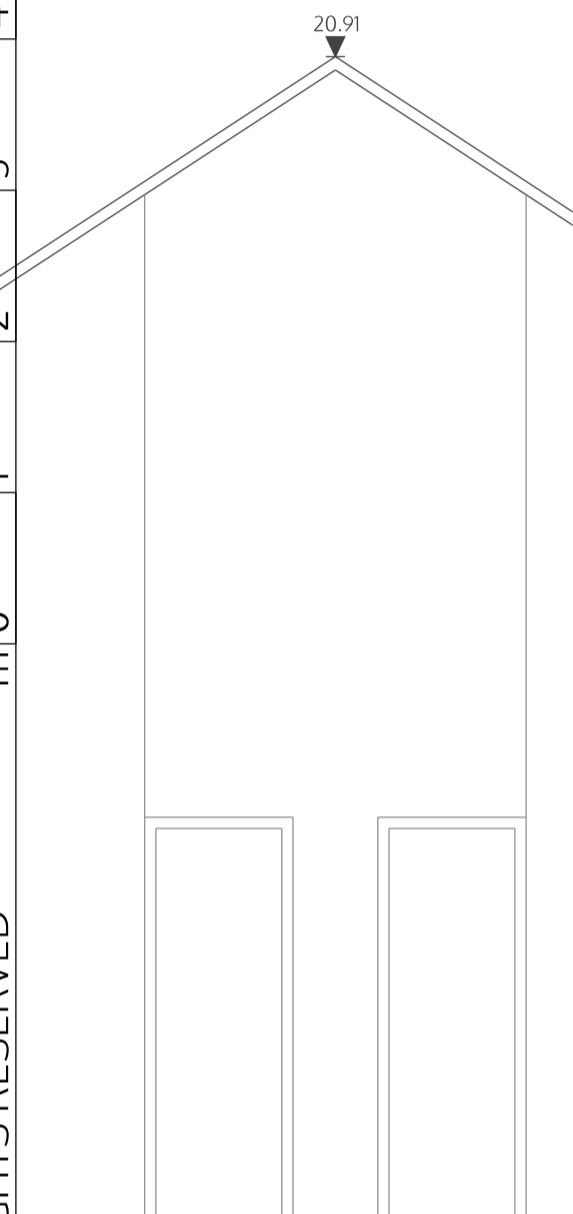
ADJACENT BUILDING

1 2 3 4 5 6 7 8 9 10 11 12 13

1350 1850 1900 1200 1150 1150 3100 1850 1350 1000 2750 3000



no. drawn date scale status
 project client title
 © ALL COPYRIGHTS RESERVED
 ALL DIMENSIONS TO BE CHECKED ON SITE



spaceAgent
 Architects and Designers
 London-Heidelberg-Barcelona-Brussels
 spaceAgent Architects Ltd is a RIBA Chartered Practice

Conversion to residential
 227 Shepherds Bush Road
 London W6 7AS

227 SBR LTD
 London

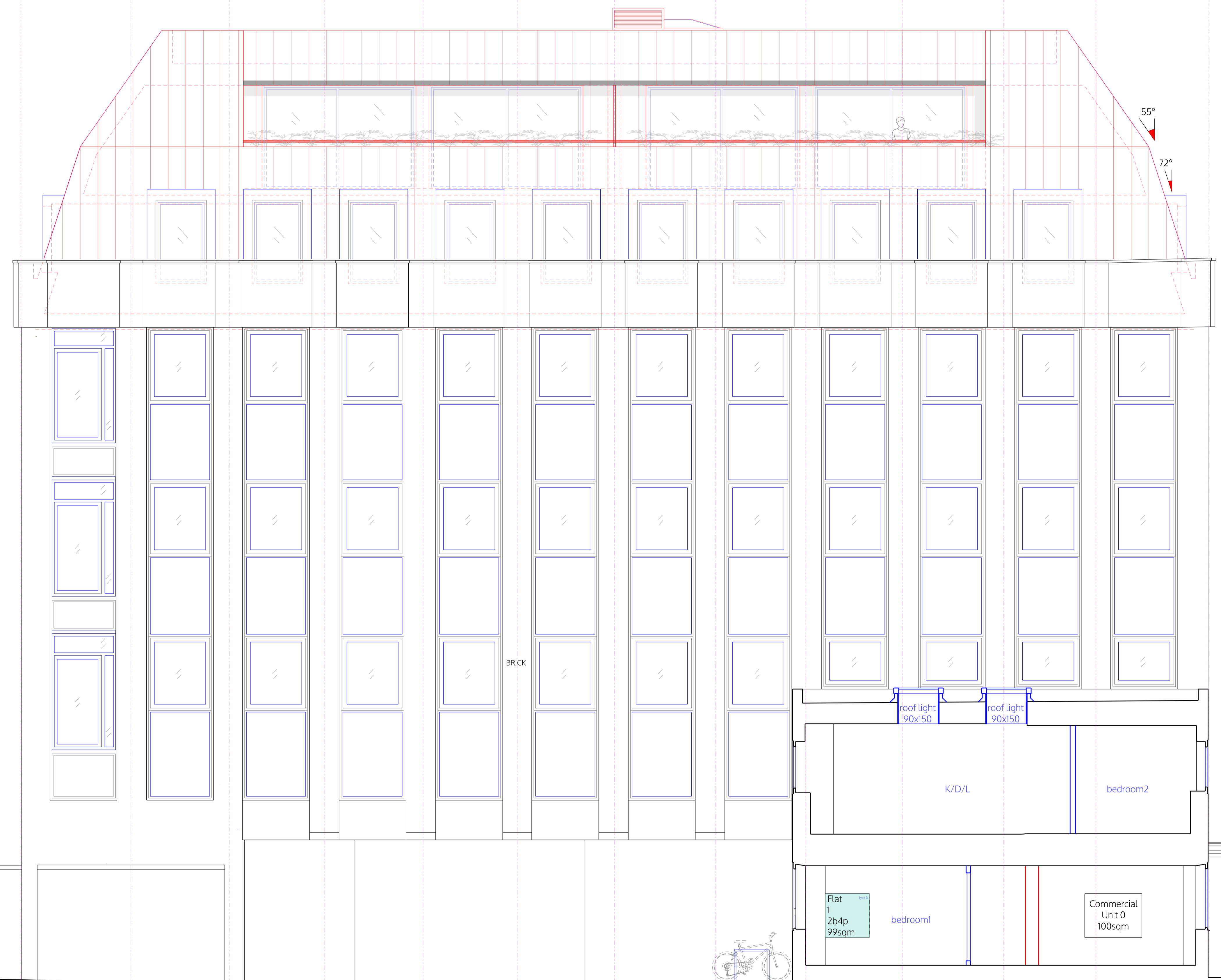
Section B-B
 as proposed

| | |
|------------|----------|
| DRAFT | |
| 1:100 @A3 | 1:50 @A1 |
| 7.04.2025 | |
| I.lezzi | |
| SHE_P11a10 | |

SECTION B-B

P O N M L J H G F E D C B A

1800 2500 2250 2150 2250 2150 2200 2300 2050 2200 2300 2100 2550



0.50 0.80 0.50
26 x LS cycle parking (conversion)

BACK ELEVATION (EAST)

no. drawn date scale status title client project © ALL COPYRIGHTS RESERVED m 0 1 2 3 4 5 ALL DIMENSIONS TO BE CHECKED ON SITE

spaceAgent
Architects and Designers
London-Heidelberg-Barcelona-Brussels
spaceAgent Architects Ltd is a RIBA Chartered Practice

Conversion to residential
227 Shepherds Bush Road
London W6 7AS

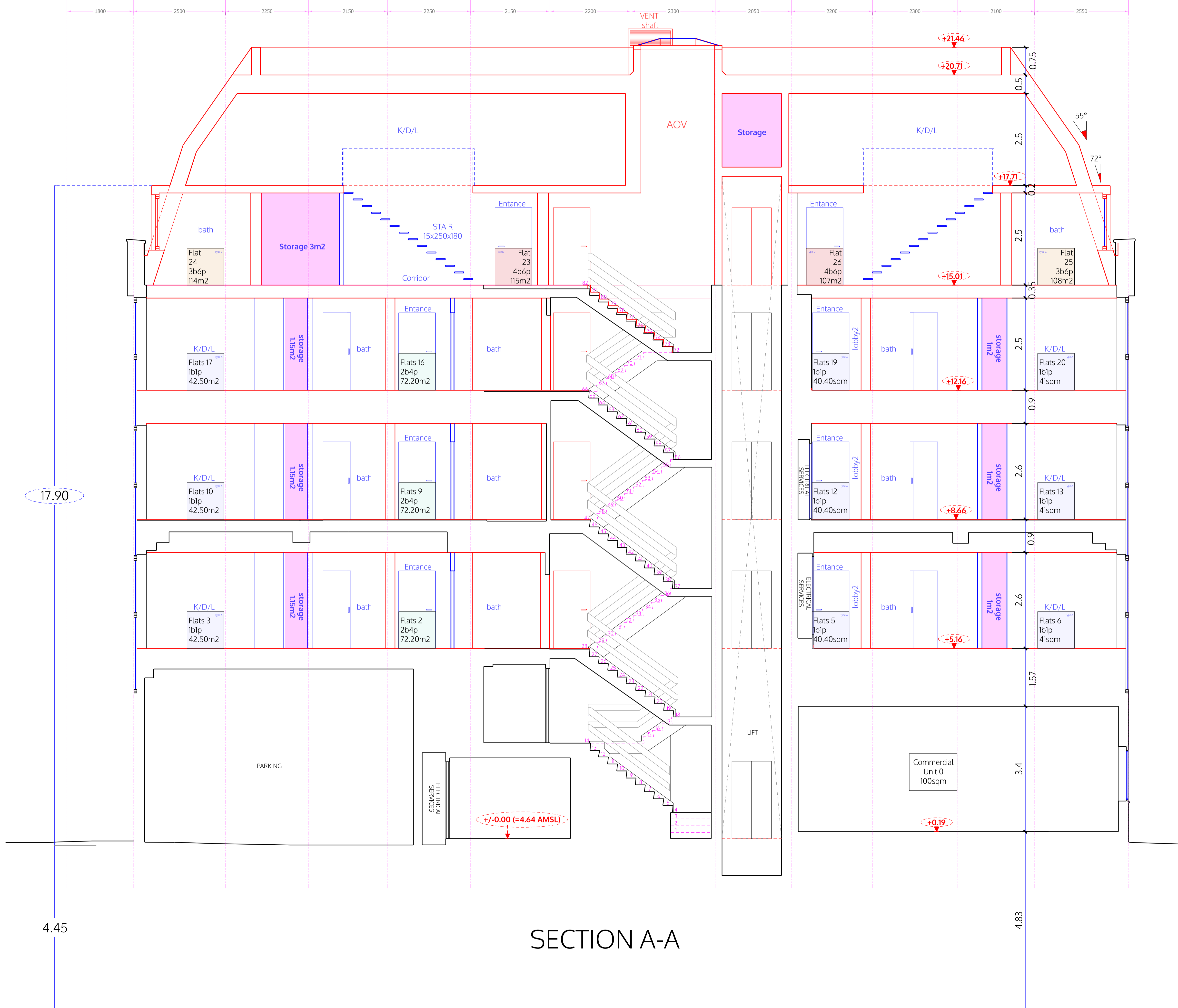
227 SBR LTD
London

Back elevation (East)
as proposed

| | |
|-----------|----------|
| DRAFT | |
| 1:100 @A3 | 1:50 @A1 |
| 7.04.2025 | |
| I.lezzi | |

SHE_P12a10

P O N M L J H G F E D C B A



no. drawn date scale status title client project © ALL COPYRIGHTS RESERVED m 10 5 4 3 2 1 0 ALL DIMENSIONS TO BE CHECKED ON SITE

spaceAgent
 Architects and Designers mail@spaceagent.com
 London-Heidelberg-Barcelona-Brussels spaceagent.com
 spaceAgent Architects Ltd is a RIBA Chartered Practice

Conversion to residential
 227 Shepherds Bush Road
 London W6 7AS

227 SBR LTD
 London

Section A-A
 as proposed

| | |
|-------|-----------------------|
| DRAFT | |
| | 1:100 @A3 1:50 @A1 |
| | 7.04.2025 |
| | I.lezzi |

SHE_P13a10