

- LEGEND**
- +/- 0.00m FFL on GF = +4.64m AMSL (*)
 - Existing
 - Demolition
 - Partitions between flats
 - Fire rated and sound proofing
 - Internal partitions

Technical housing standards
 -Minimum GIA and storage (m2)

Type	A	B	C	D
N° of bedrooms (b)	1b	2b	3b	4b
N° of bed spaces (persons)	1p	4p	6p	6p
1 storey dwellings	39 (37)*	70		
2 storey dwellings		79	102	106
Built-in storage	1.0	2.0	2.5	3.0

Flats	A	B	C	D
Flats N° 1		B		
Flats N° 2 - 9 - 16		B		
Flats N° 3 - 10 - 17	A			
Flats N° 4 - 11 - 18	A			
Flats N° 5 - 12 - 19	A			
Flats N° 6 - 13 - 20	A			
Flats N° 7 - 14 - 21	A			
Flats N° 8 - 15 - 22	A			
Flats N° 23 - 26				D
Flats N° 24 - 25			C	

spaceAgent
 Architects and Designers
 London-Heidelberg-Barcelona-Brussels
 spaceAgent Architects Ltd is a RIBA Chartered Practice

Conversion to residential
 227 Shepherds Bush Road
 London W6 7AS

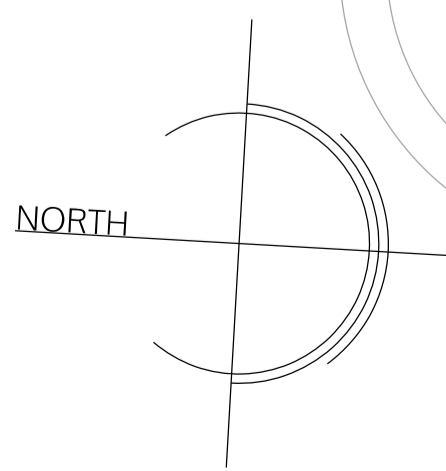
Jeremy Sutton
 ...
 ...

Ground floor plan
 as proposal

DRAFT	
	1:100 @A3 1:50 @A1
	1.04.2025
	I.lezzi

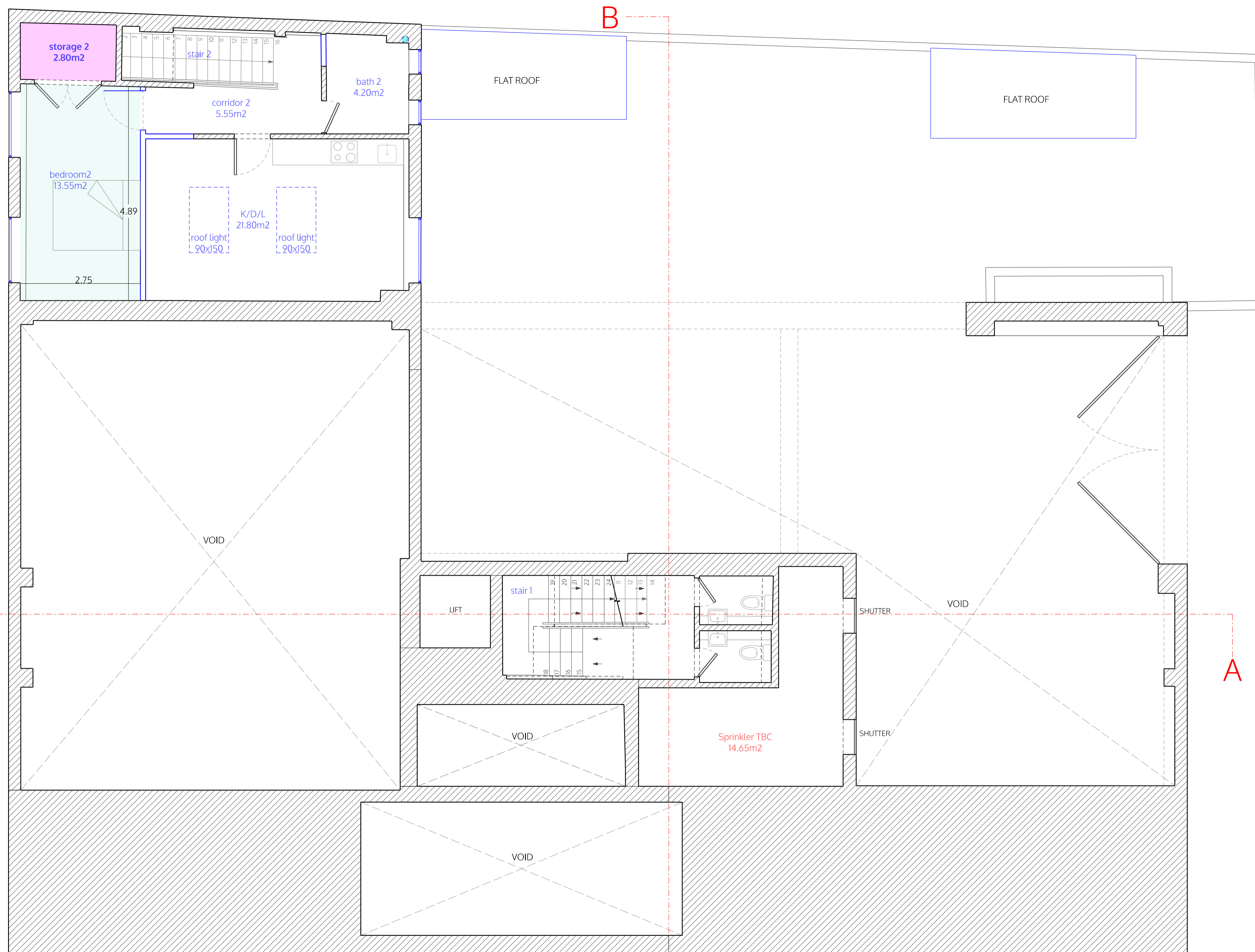
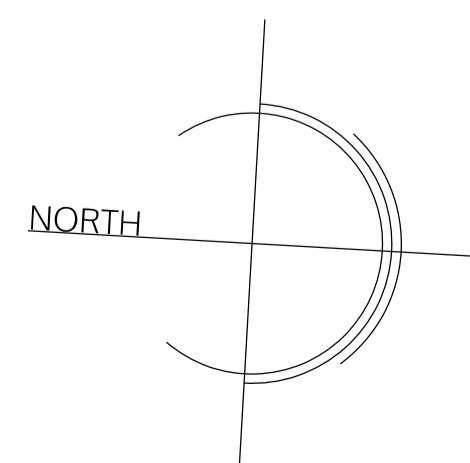
SHE_P01a8

no. drawn date scale status title client project © ALL COPYRIGHTS RESERVED m 0 1 2 3 4 5 ALL DIMENSIONS TO BE CHECKED ON SITE



GROUND FLOOR

SHEPPERDS BUSH ROAD



MEZZANINE

LEGEND

- +/- 0.00m FFL on GF = +4.64m AMSL (*)
- Existing
- Demolition
- Partitions between flats
- Fire rated and sound proofing
- Internal partitions

Technical housing standards
-Minimum GIA and storage (m²)

Type	A	B	C	D
N° of bedrooms (b)	1b	2b	3b	4b
N° of bed spaces (persons)	1p	4p	6p	6p
1 storey dwellings	39 (37)*	70		
2 storey dwellings		79	102	106
Built-in storage	1.0	2.0	2.5	3.0

Flats	A	B	C	D
Flats N° 1		B		
Flats N° 2 - 9 - 16		B		
Flats N° 3 - 10 - 17	A			
Flats N° 4 - 11 - 18	A			
Flats N° 5 - 12 - 19	A			
Flats N° 6 - 13 - 20	A			
Flats N° 7 - 14 - 21	A			
Flats N° 8 - 15 - 22	A			
Flats N° 23 - 26				D
Flats N° 24 - 25			C	

spaceAgent

Architects and Designers
London-Heidelberg-Barcelona-Brussels
spaceAgent Architects Ltd is a RIBA Chartered Practice

Conversion to residential
227 Shepherds Bush Road
London W6 7AS

Jeremy Sutton

Mezzanine plan
as proposal

DRAFT

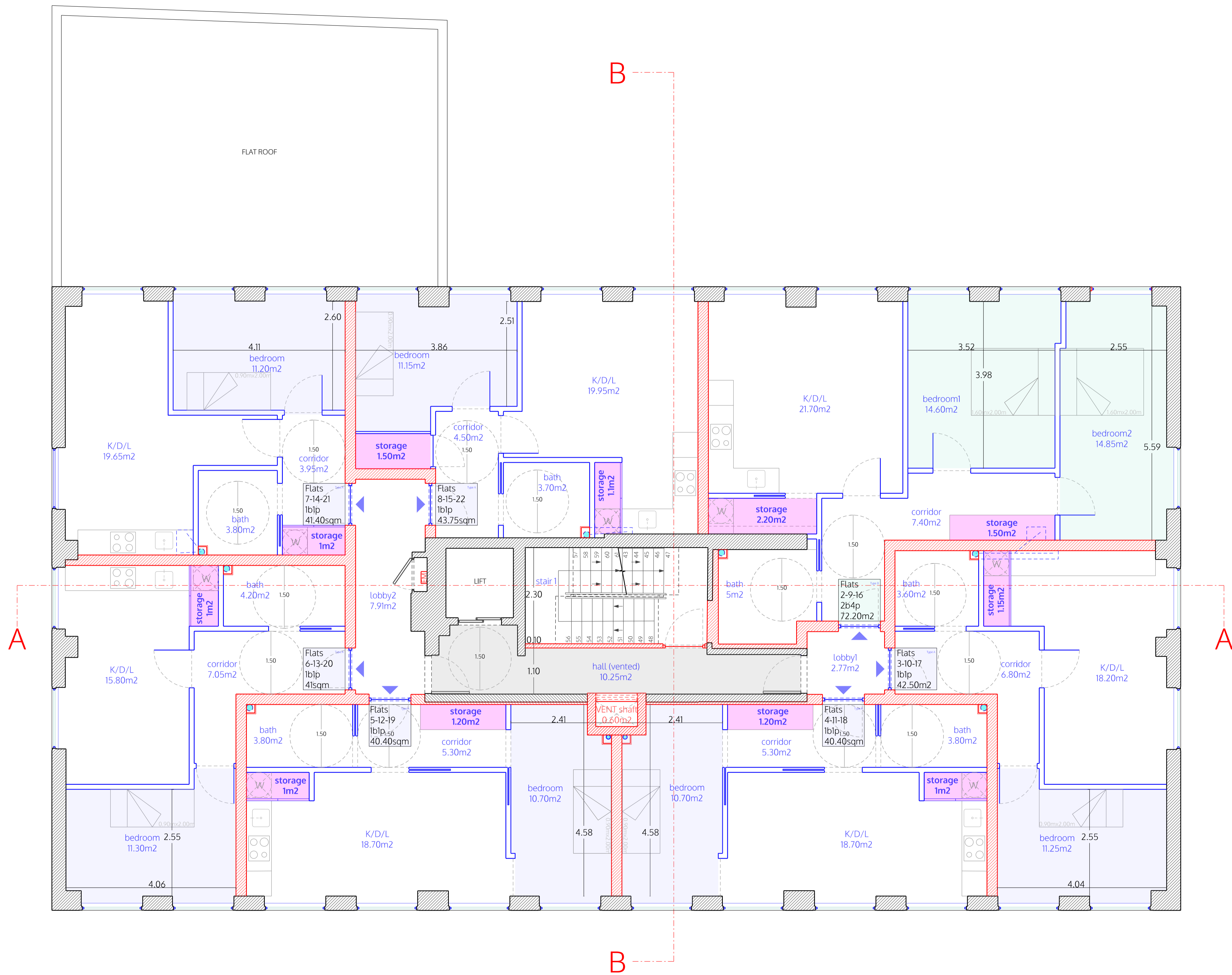
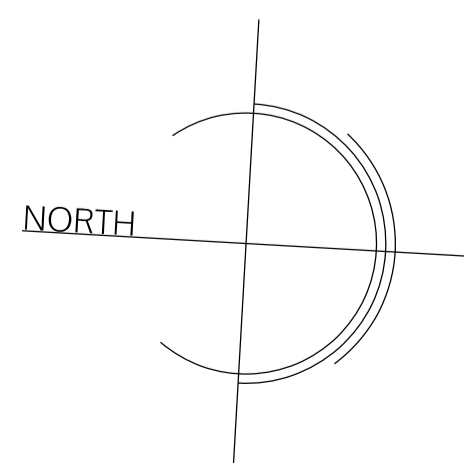
1:100 @A3
1:50 @A1

2.04.2025

I.lezzi

SHE_P02a8

no. drawn date scale status title client project ALL DIMENSIONS TO BE CHECKED ON SITE © ALL COPYRIGHTS RESERVED



SECOND FLOOR
(First - Third)

- LEGEND**
- +/- 0.00m FFL on GF = +4.64m AMSL (*)
 - Existing
 - Demolition
 - Partitions between flats
 - Fire rated and sound proofing
 - Internal partitions

Technical housing standards
-Minimum GIA and storage (m²)

Type	A	B	C	D
N° of bedrooms (b)	1b	2b	3b	4b
N° of bed spaces (persons)	1p	4p	6p	6p
1 storey dwellings	39 (37)*	70		
2 storey dwellings		79	102	106
Built-in storage	1.0	2.0	2.5	3.0

Flats	A	B	C	D
Flats N° 1		B		
Flats N° 2 - 9 - 16		B		
Flats N° 3 - 10 - 17	A			
Flats N° 4 - 11 - 18	A			
Flats N° 5 - 12 - 19	A			
Flats N° 6 - 13 - 20	A			
Flats N° 7 - 14 - 21	A			
Flats N° 8 - 15 - 22	A			
Flats N° 23 - 26				D
Flats N° 24 - 25			C	

spaceAgent

Architects and Designers mail@spaceagent.com
 London-Heidelberg-Barcelona-Brussels spaceagent.com
 spaceAgent Architects Ltd is a RIBA Chartered Practice

Conversion to residential
227 Shepherds Bush Road
London W6 7AS

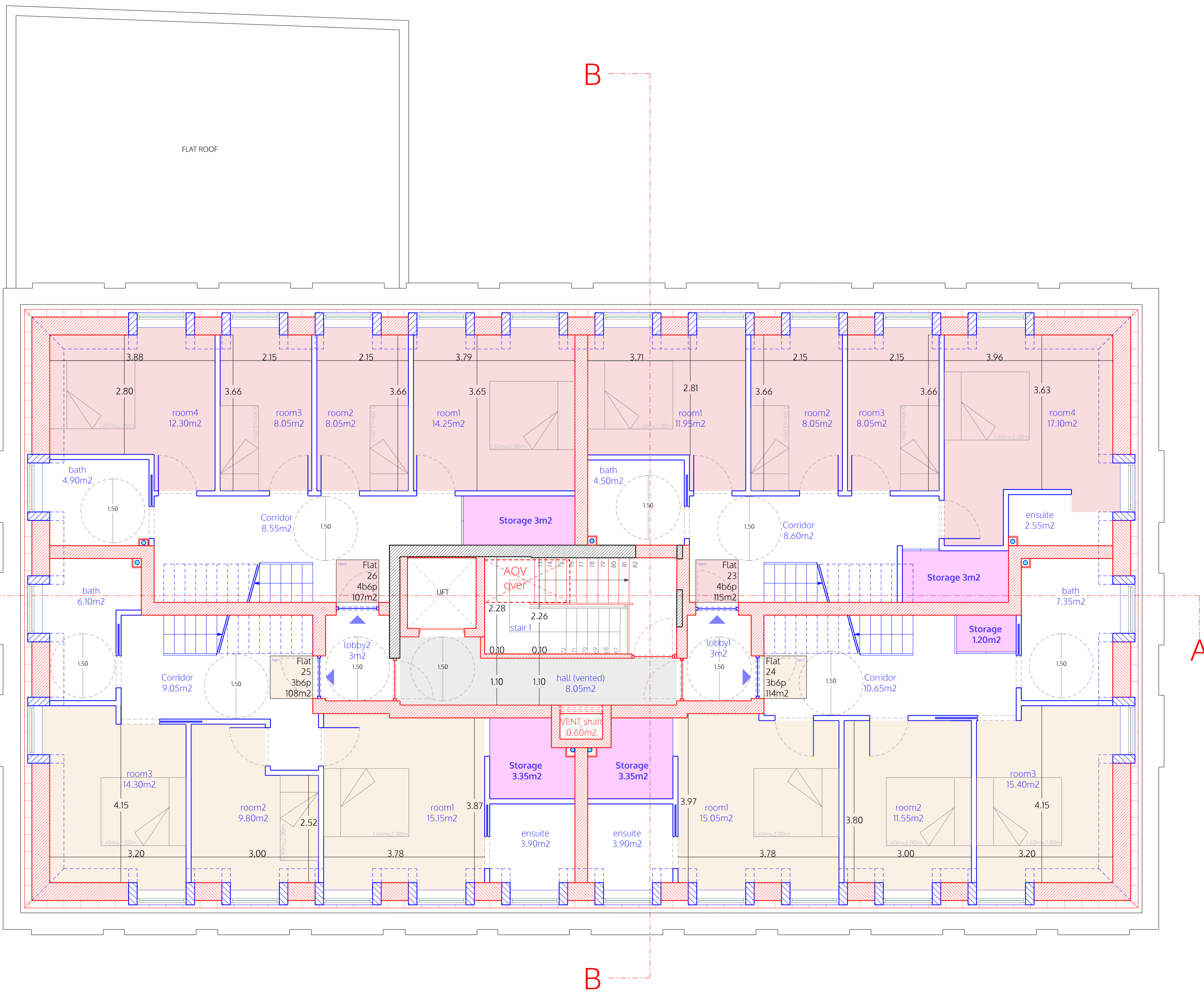
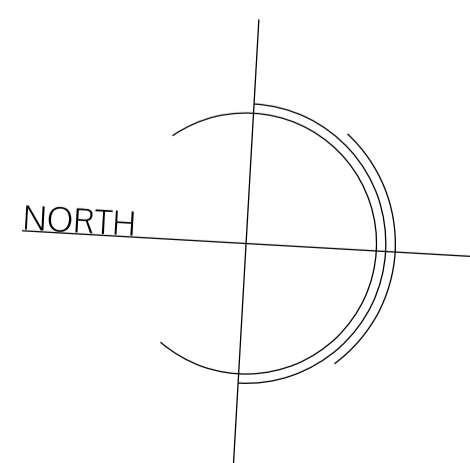
Jeremy Sutton
...
...

Second floor plan (First - Third)
Type plan

DRAFT	
	1:100 @A3 1:50 @A1
	1.04.2025
	I.lezzi

SHE_P04a8

no. drawn date scale status title client project © ALL COPYRIGHTS RESERVED m 0 1 2 3 4 5 ALL DIMENSIONS TO BE CHECKED ON SITE



FOURTH FLOOR

- LEGEND**
- +/- 0.00m FFL on GF = +4.64m AMSL (*)
 - Existing
 - Demolition
 - Partitions between flats
 - Fire rated and sound proofing
 - Internal partitions

Technical housing standards
-Minimum GIA and storage (m²)

Type	A	B	C	D
N° of bedrooms (b)	1b	2b	3b	4b
N° of bed spaces (persons)	1p	4p	6p	6p
1 storey dwellings	39 (37)*	70		
2 storey dwellings		79	102	106
Built-in storage	1.0	2.0	2.5	3.0

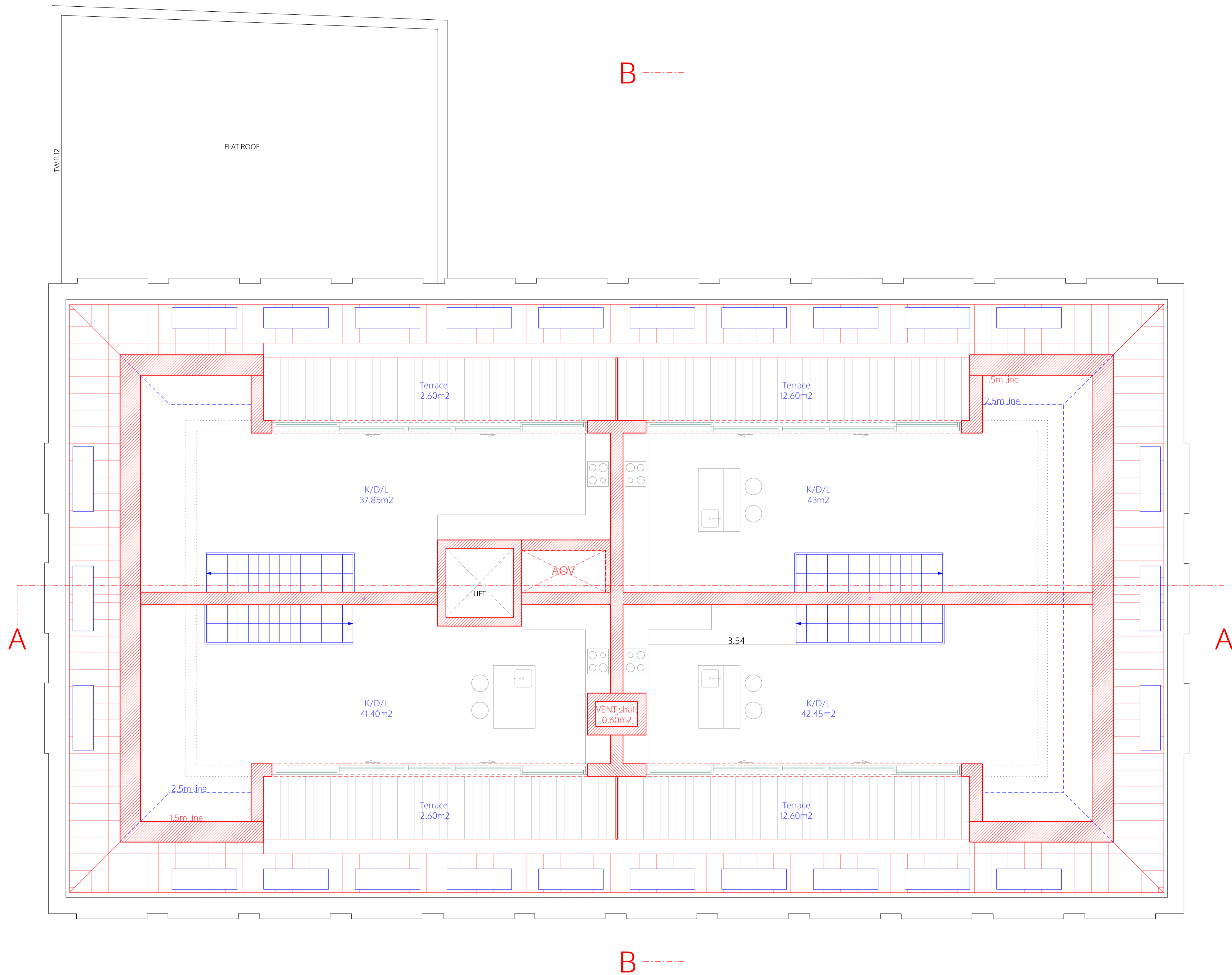
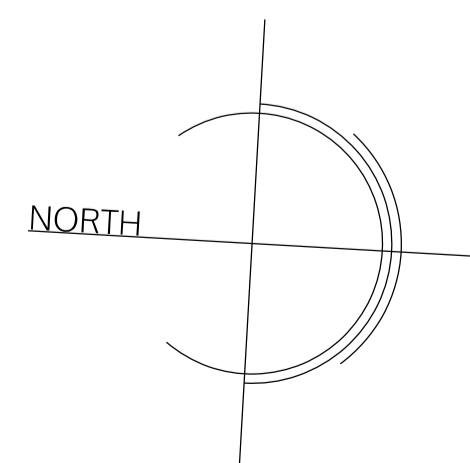
Flats	A	B	C	D
Flats N° 1		B		
Flats N° 2 - 9 - 16		B		
Flats N° 3 - 10 - 17	A			
Flats N° 4 - 11 - 18	A			
Flats N° 5 - 12 - 19	A			
Flats N° 6 - 13 - 20	A			
Flats N° 7 - 14 - 21	A			
Flats N° 8 - 15 - 22	A			
Flats N° 23 - 26				D
Flats N° 24 - 25			C	

spaceAgent
Architects and Designers
London-Heidelberg-Barcelona-Brussels
spaceAgent Architects Ltd is a RIBA Chartered Practice

Conversion to residential
227 Shepherds Bush Road
London W6 7AS
Jeremy Sutton
...
...
Fourth floor plan
as proposal

DRAFT	
	1:100 @A3 1:50 @A1
	1.04.2025
	I.lezzi
SHE_P06a8	

no. drawn date scale status title client project © ALL COPYRIGHTS RESERVED m10 1 2 3 4 5 ALL DIMENSIONS TO BE CHECKED ON SITE



ROOF

LEGEND

+/- 0.00m FFL on GF = +4.64m AMSL (*)

- Existing
- Demolition
- Partitions between flats
- Fire rated and sound proofing
- Internal partitions

Technical housing standards
-Minimum GIA and storage (m²)

Type	A	B	C	D
N° of bedrooms (b)	1b	2b	3b	4b
N° of bed spaces (persons)	1p	4p	6p	6p
1 storey dwellings	39 (37)*	70		
2 storey dwellings		79	102	106
Built-in storage	1.0	2.0	2.5	3.0

Flats	A	B	C	D
Flats N° 1		B		
Flats N° 2 - 9 - 16		B		
Flats N° 3 - 10 - 17	A			
Flats N° 4 - 11 - 18	A			
Flats N° 5 - 12 - 19	A			
Flats N° 6 - 13 - 20	A			
Flats N° 7 - 14 - 21	A			
Flats N° 8 - 15 - 22	A			
Flats N° 23 - 26				D
Flats N° 24 - 25			C	

spaceAgent

Architects and Designers mail@spaceagent.com
London-Heidelberg-Barcelona-Brussels spaceagent.com
spaceAgent Architects Ltd is a RIBA Chartered Practice

Conversion to residential
227 Shepherds Bush Road
London W6 7AS

Jeremy Sutton

Roof plan
as proposal

DRAFT

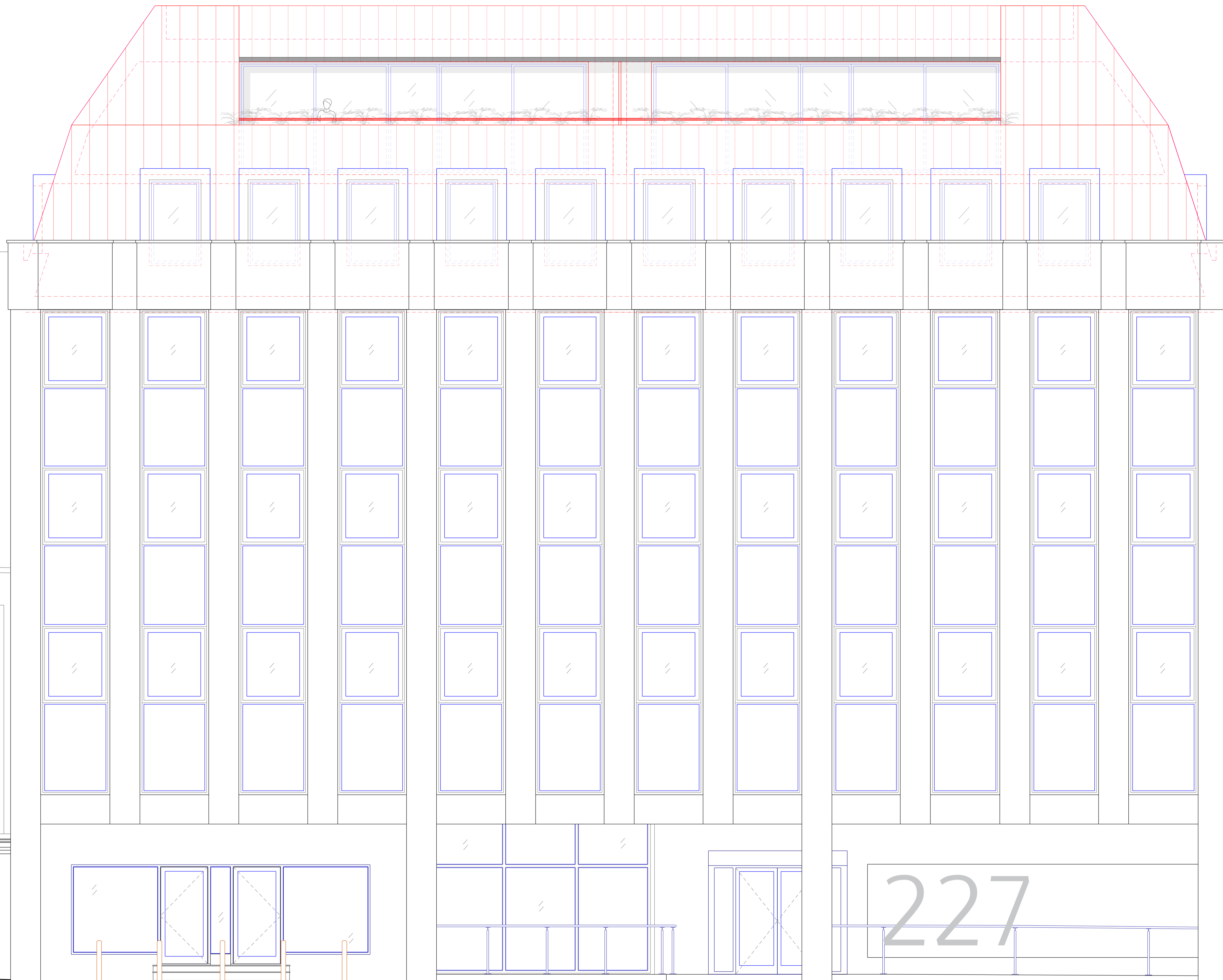
1:100 @A3
1:50 @A1

1.04.2025

I.lezzi

SHE_P07a8

no. drawn date scale status title client project © ALL COPYRIGHTS RESERVED m 0 1 2 3 4 5 ALL DIMENSIONS TO BE CHECKED ON SITE



FRONT ELEVATION (WEST)

no. drawn date scale status title client project © ALL COPYRIGHTS RESERVED m 0 1 2 3 4 5 ALL DIMENSIONS TO BE CHECKED ON SITE

spaceAgent
 Architects and Designers London-Heidelberg-Barcelona-Brussels
 mail@spaceagent.com spaceagent.com
 spaceAgent Architects Ltd is a RIBA Chartered Practice

Conversion to residential
 227 Shepherds Bush Road
 London W6 7AS

Jeremy Sutton

Front elevation (West)
 as proposal

DRAFT	
	1:100 @A3 1:50 @A1
	2.04.2025
	l.lezzi

SHE_P08a8

↓ ROOF TILES ↓

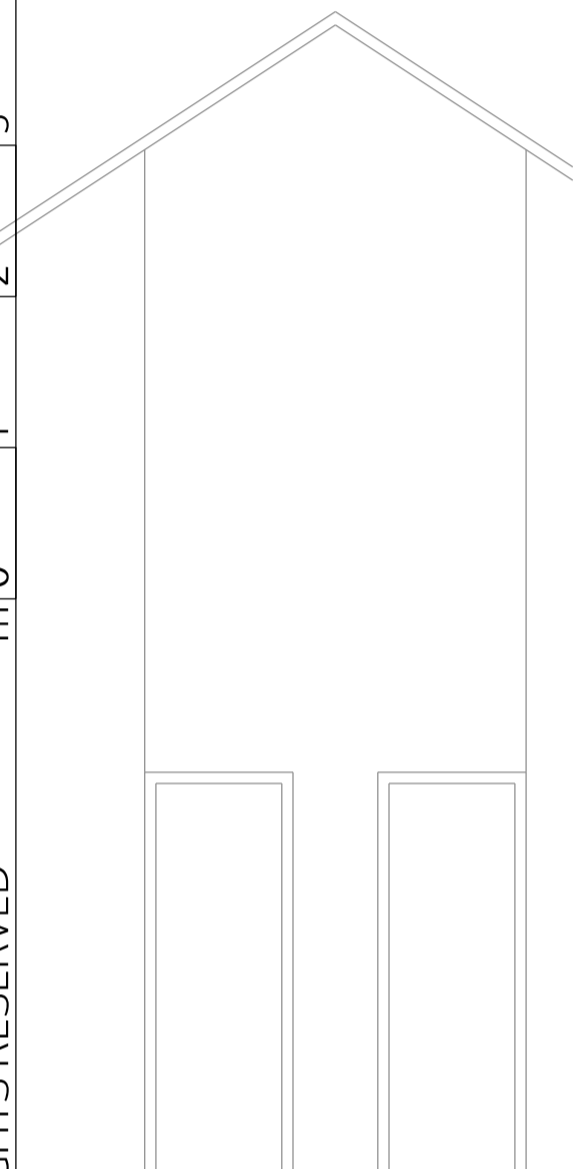
↓ ROOF TILES ↓

WINDOW



SOUTH ELEVATION

no. drawn date scale status title client project © ALL COPYRIGHTS RESERVED m 0 1 2 3 4 5 ALL DIMENSIONS TO BE CHECKED ON SITE



spaceAgent
 Architects and Designers London-Heidelberg-Barcelona-Brussels
 mail@spaceagent.com spaceagent.com
 spaceAgent Architects Ltd is a RIBA Chartered Practice

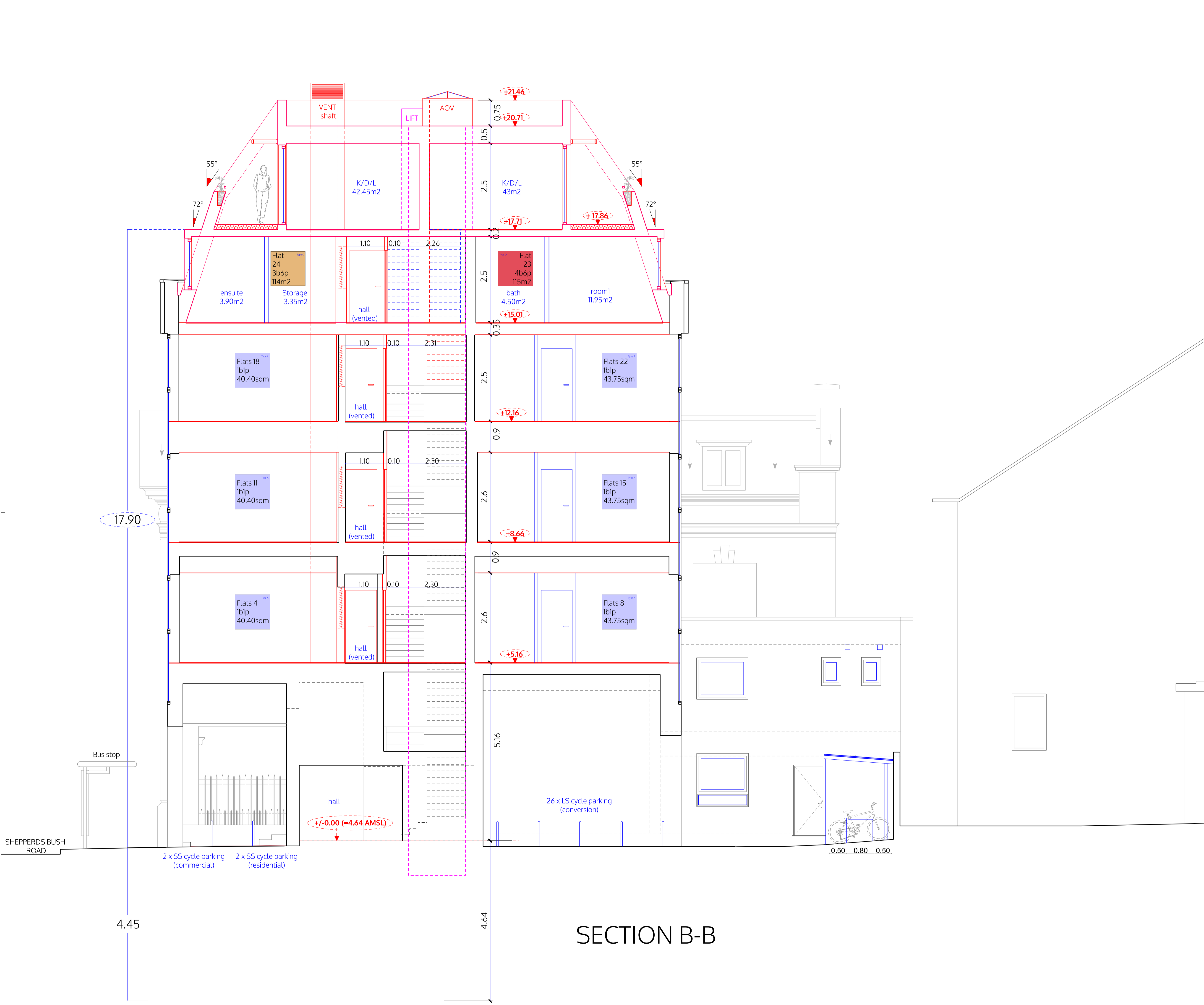
Conversion to residential
 227 Shepherds Bush Road
 London W6 7AS

Jeremy Sutton

South elevation
 as proposal

DRAFT	
1:100 @A3	1:50 @A1
2.04.2025	
I.lezzi	

SHE_P10a8



SECTION B-B

no. drawn date scale status title client project © ALL COPYRIGHTS RESERVED m 0 1 2 3 4 5 ALL DIMENSIONS TO BE CHECKED ON SITE

spaceAgent 
 Architects and Designers mail@spaceagent.com
 London-Heidelberg-Barcelona-Brussels spaceagent.com
 spaceAgent Architects Ltd is a RIBA Chartered Practice

Conversion to residential
 227 Shepherds Bush Road
 London W6 7AS

Jeremy Sutton

Section B-B
 as proposal

DRAFT	
	1:100 @A3 1:50 @A1
	2.04.2025
	I.lezzi
SHE_P11a8	