

- LEGEND**
- +/- 0.00m FFL on GF = +4.64m AMSL (\*)
  - Existing
  - Demolition
  - Partitions between flats
  - Fire rated and sound proofing
  - Internal partitions

Technical housing standards  
 -Minimum GIA and storage (m2)

Type	A	B	C	D
N° of bedrooms (b)	1b	2b	3b	4b
N° of bed spaces (persons)	1p	4p	6p	6p
1 storey dwellings	39 (37)*	70		
2 storey dwellings		79	102	106
Built-in storage	1.0	2.0	2.5	3.0

Flats	A	B	C	D
Flats N° 1		B		
Flats N° 2 - 9 - 16		B		
Flats N° 3 - 10 - 17	A			
Flats N° 4 - 11 - 18	A			
Flats N° 5 - 12 - 19	A			
Flats N° 6 - 13 - 20	A			
Flats N° 7 - 14 - 21	A			
Flats N° 8 - 15 - 22	A			
Flats N° 23 - 26				D
Flats N° 24 - 25			C	

**spaceAgent**  
 Architects and Designers  
 London-Heidelberg-Barcelona-Brussels  
 spaceAgent Architects Ltd is a RIBA Chartered Practice

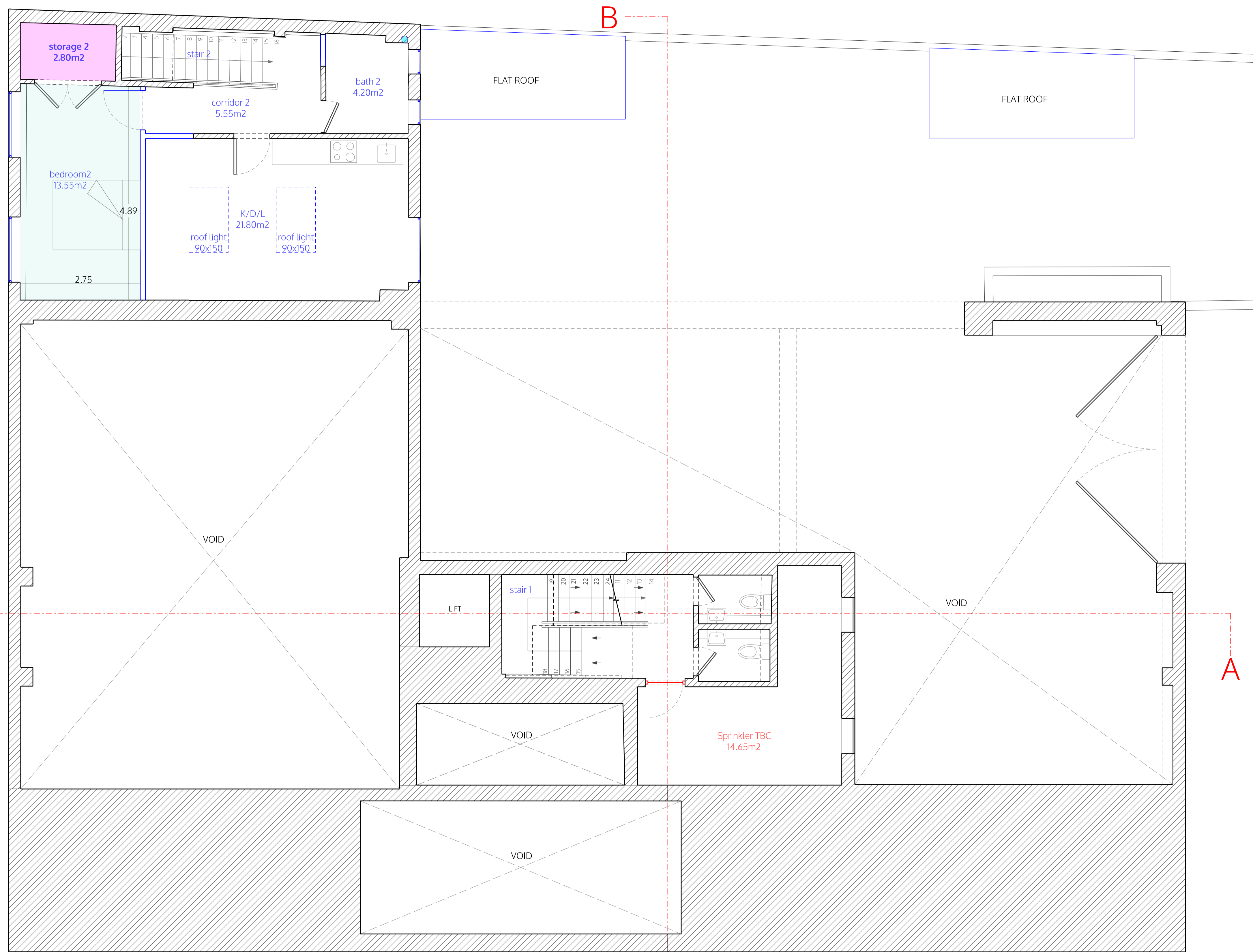
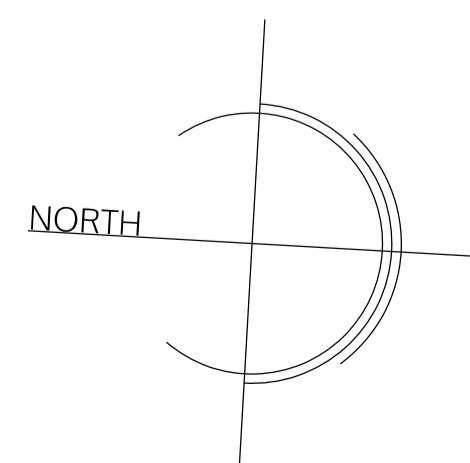
Conversion to residential  
 227 Shepherds Bush Road  
 London W6 7AS

Jeremy Sutton  
 ...  
 ...

Ground floor plan  
 as proposal

<b>DRAFT</b>	
	1:100 @A3 1:50 @A1
	1.04.2025
	I.lezzi
<b>SHE_P01a7</b>	

no. drawn date scale status title client project © ALL COPYRIGHTS RESERVED m 0 1 2 3 4 5 ALL DIMENSIONS TO BE CHECKED ON SITE



MEZZANINE

LEGEND

- +/- 0.00m FFL on GF = +4.64m AMSL (\*)
- Existing
- Demolition
- Partitions between flats
- Fire rated and sound proofing
- Internal partitions

Technical housing standards  
-Minimum GIA and storage (m²)

Type	A	B	C	D
N° of bedrooms (b)	1b	2b	3b	4b
N° of bed spaces (persons)	1p	4p	6p	6p
1 storey dwellings	39 (37)*	70		
2 storey dwellings		79	102	106
Built-in storage	1.0	2.0	2.5	3.0

Flats	A	B	C	D
Flats N° 1		B		
Flats N° 2 - 9 - 16		B		
Flats N° 3 - 10 - 17	A			
Flats N° 4 - 11 - 18	A			
Flats N° 5 - 12 - 19	A			
Flats N° 6 - 13 - 20	A			
Flats N° 7 - 14 - 21	A			
Flats N° 8 - 15 - 22	A			
Flats N° 23 - 26				D
Flats N° 24 - 25			C	

spaceAgent

Architects and Designers  
London-Heidelberg-Barcelona-Brussels  
spaceAgent Architects Ltd is a RIBA Chartered Practice

Conversion to residential  
227 Shepherds Bush Road  
London W6 7AS

Jeremy Sutton

Mezzanine plan  
as proposal

DRAFT

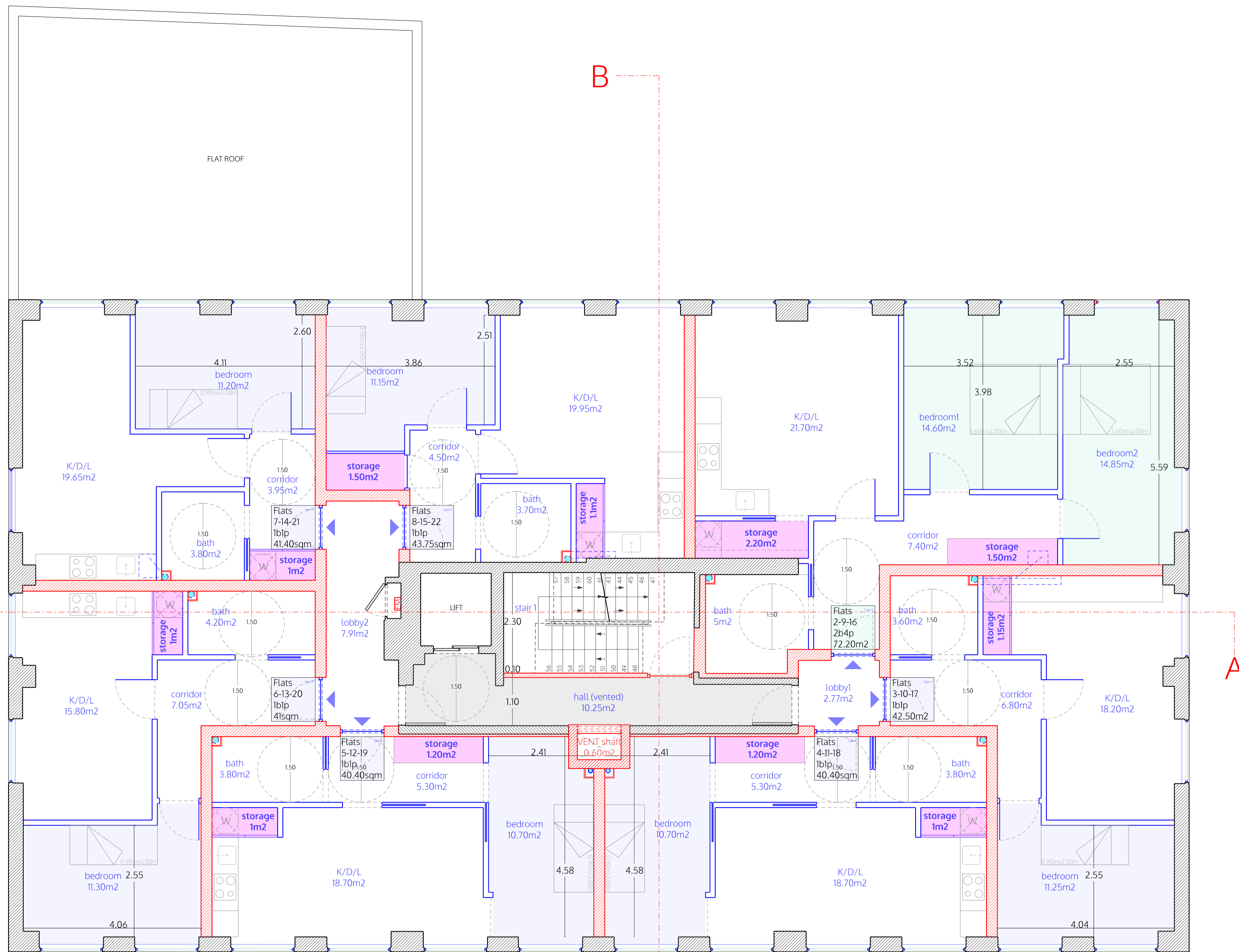
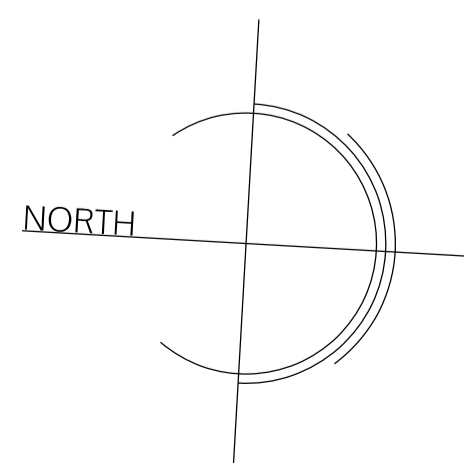
1:100 @A3  
1:50 @A1

1.04.2025

I.lezzi

SHE\_P02a7

no. drawn date scale status title client project copyright reserved m 0 1 2 3 4 5 ALL DIMENSIONS TO BE CHECKED ON SITE



SECOND FLOOR  
(First - Third)

- LEGEND**
- +/- 0.00m FFL on GF = +4.64m AMSL (\*)
  - Existing
  - Demolition
  - Partitions between flats
  - Fire rated and sound proofing
  - Internal partitions

Technical housing standards  
-Minimum GIA and storage (m<sup>2</sup>)

Type	A	B	C	D
N° of bedrooms (b)	1b	2b	3b	4b
N° of bed spaces (persons)	1p	4p	6p	6p
1 storey dwellings	39 (37)*	70		
2 storey dwellings		79	102	106
Built-in storage	1.0	2.0	2.5	3.0

Flats	A	B	C	D
Flats N° 1		B		
Flats N° 2 - 9 - 16		B		
Flats N° 3 - 10 - 17	A			
Flats N° 4 - 11 - 18	A			
Flats N° 5 - 12 - 19	A			
Flats N° 6 - 13 - 20	A			
Flats N° 7 - 14 - 21	A			
Flats N° 8 - 15 - 22	A			
Flats N° 23 - 26				D
Flats N° 24 - 25			C	

**spaceAgent**  
Architects and Designers  
London-Heidelberg-Barcelona-Brussels  
spaceAgent Architects Ltd is a RIBA Chartered Practice

Conversion to residential  
227 Shepherds Bush Road  
London W6 7AS

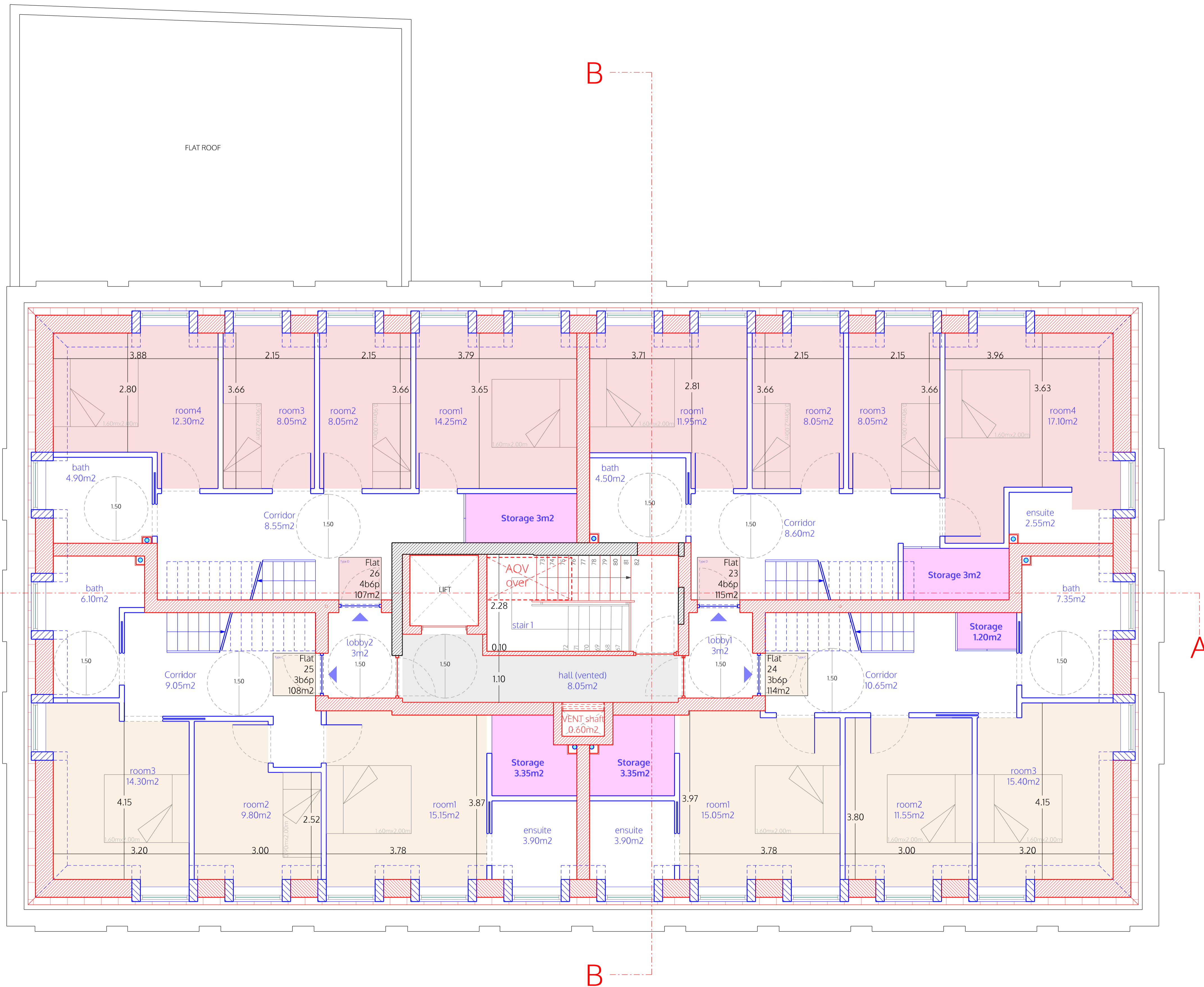
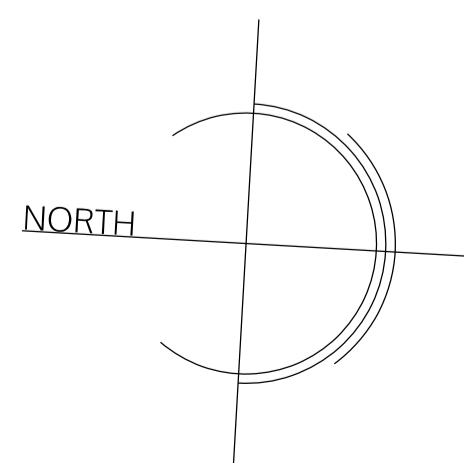
Jeremy Sutton  
...

Second floor plan (First - Third)  
Type plan

<b>DRAFT</b>	
	1:100 @A3 1:50 @A1
	1.04.2025
	I.lezzi

SHE\_P04a7

no. drawn date scale status title client project ALL DIMENSIONS TO BE CHECKED ON SITE © ALL COPYRIGHTS RESERVED



FOURTH FLOOR

LEGEND

- +/- 0.00m FFL on GF = +4.64m AMSL (\*)
- Existing
- Demolition
- Partitions between flats
- Fire rated and sound proofing
- Internal partitions

Technical housing standards  
-Minimum GIA and storage (m<sup>2</sup>)

Type	A	B	C	D
N° of bedrooms (b)	1b	2b	3b	4b
N° of bed spaces (persons)	1p	4p	6p	6p
1 storey dwellings	39 (37)*	70		
2 storey dwellings		79	102	106
Built-in storage	1.0	2.0	2.5	3.0

Flats	A	B	C	D
Flats N° 1		B		
Flats N° 2 - 9 - 16		B		
Flats N° 3 - 10 - 17	A			
Flats N° 4 - 11 - 18	A			
Flats N° 5 - 12 - 19	A			
Flats N° 6 - 13 - 20	A			
Flats N° 7 - 14 - 21	A			
Flats N° 8 - 15 - 22				
Flats N° 23 - 26				D
Flats N° 24 - 25			C	

spaceAgent

Architects and Designers  
London-Heidelberg-Barcelona-Brussels  
spaceAgent Architects Ltd is a RIBA Chartered Practice

Conversion to residential  
227 Shepherds Bush Road  
London W6 7AS

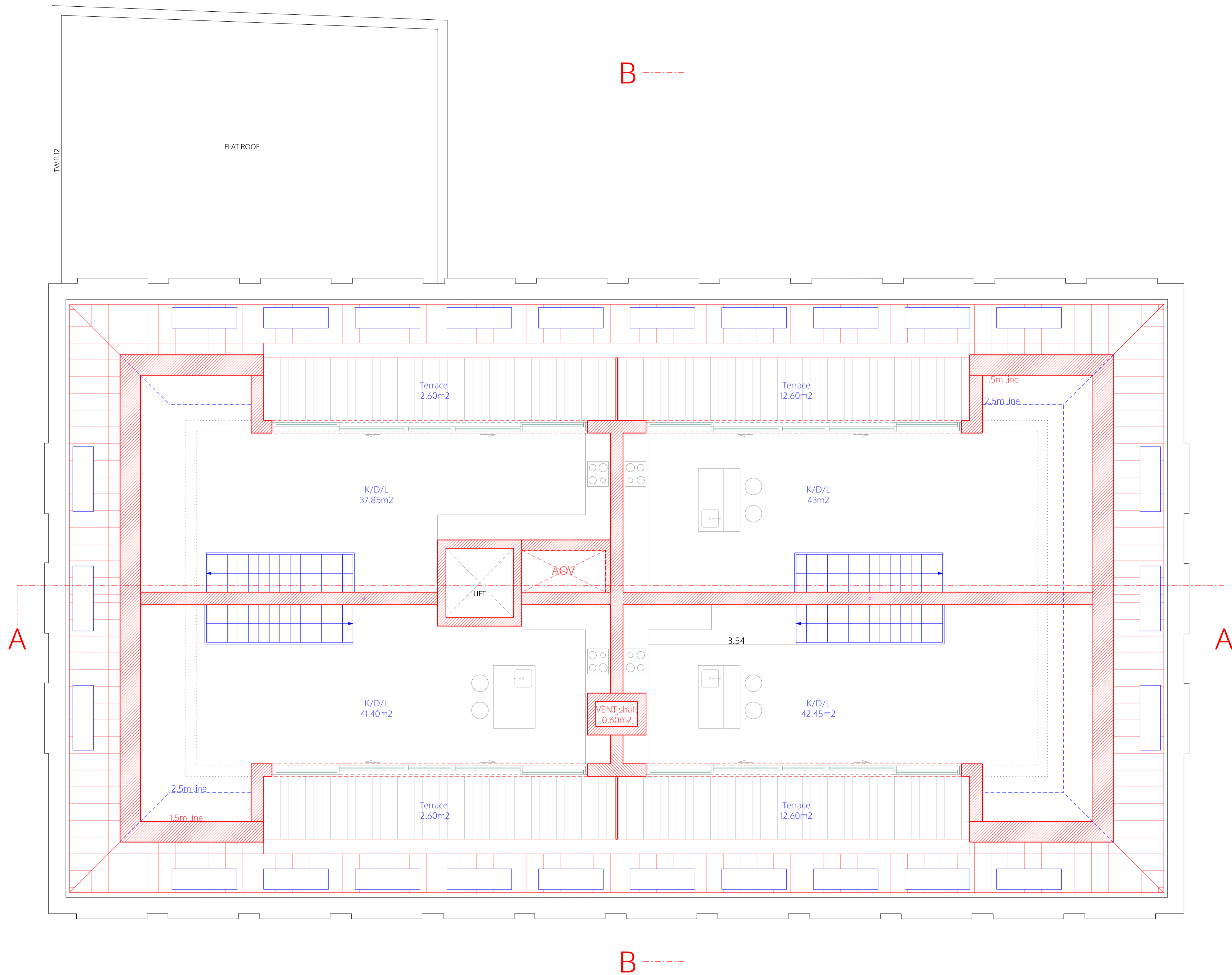
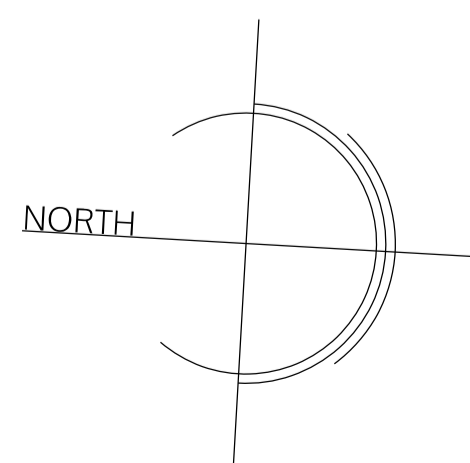
Jeremy Sutton  
...

Fourth floor plan  
as proposal

DRAFT	
	1:100 @A3 1:50 @A1
	1.04.2025
	I.lezzi

SHE\_P06a7

no. drawn date scale status title client project © ALL COPYRIGHTS RESERVED m10 1 2 3 4 5 ALL DIMENSIONS TO BE CHECKED ON SITE



ROOF

LEGEND

+/- 0.00m FFL on GF = +4.64m AMSL (\*)

- Existing
- Demolition
- Partitions between flats
- Fire rated and sound proofing
- Internal partitions

Technical housing standards  
-Minimum GIA and storage (m<sup>2</sup>)

Type	A	B	C	D
N° of bedrooms (b)	1b	2b	3b	4b
N° of bed spaces (persons)	1p	4p	6p	6p
1 storey dwellings	39 (37)*	70		
2 storey dwellings		79	102	106
Built-in storage	1.0	2.0	2.5	3.0

Flats	A	B	C	D
Flats N° 1		B		
Flats N° 2 - 9 - 16		B		
Flats N° 3 - 10 - 17	A			
Flats N° 4 - 11 - 18	A			
Flats N° 5 - 12 - 19	A			
Flats N° 6 - 13 - 20	A			
Flats N° 7 - 14 - 21	A			
Flats N° 8 - 15 - 22	A			
Flats N° 23 - 26				D
Flats N° 24 - 25			C	

spaceAgent

Architects and Designers mail@spaceagent.com  
London-Heidelberg-Barcelona-Brussels spaceagent.com  
spaceAgent Architects Ltd is a RIBA Chartered Practice

Conversion to residential  
227 Shepherds Bush Road  
London W6 7AS

Jeremy Sutton

Roof plan  
as proposal

DRAFT

1:100 @A3  
1:50 @A1

1.04.2025

I.lezzi

SHE\_P07a7

no. drawn date scale status title client project © ALL COPYRIGHTS RESERVED m 0 1 2 3 4 5 ALL DIMENSIONS TO BE CHECKED ON SITE