

- LEGEND**
- Existing
  - Demolition
  - Partitions between flats
  - Fire rated and sound proofing
  - Internal partitions

no. drawn date scale status title client project © ALL COPYRIGHTS RESERVED m 0 1 2 3 4 5 ALL DIMENSIONS TO BE CHECKED ON SITE

**spaceAgent**  
 Architects and Designers mail@spaceagent.com  
 London-Heidelberg-Barcelona-Brussels spaceagent.com  
 spaceAgent Architects Ltd is a RIBA Chartered Practice

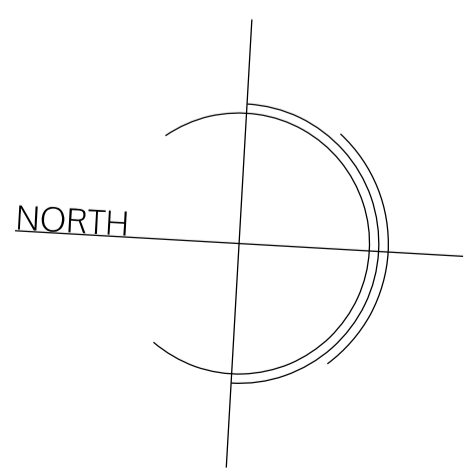
Conversion to residential  
 227 Shepherds Bush Road  
 London W6 7AS

227 SBR LTD  
 London

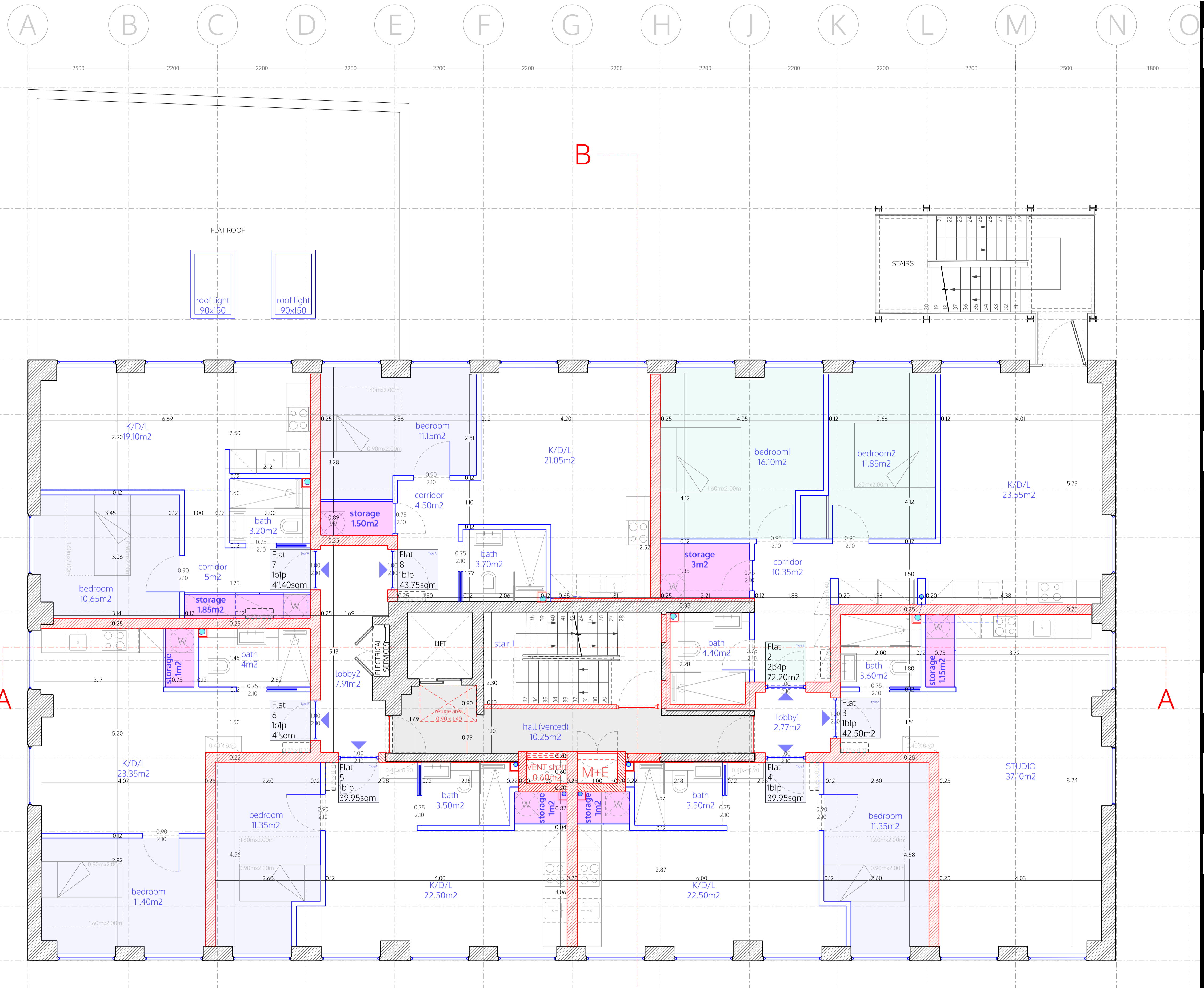
Mezzanine plan  
 as proposed  
 rev. A= scheme ALL (combined)

<b>DRAFT</b>	
	1:100 @A3 1:50 @A1
	18.07.2025
	I.lezzi

**SHE\_P02a16c**



**MEZZANINE**



- LEGEND**
- Existing
  - Demolition
  - Partitions between flats
  - Fire rated and sound proofing
  - Internal partitions

no. drawn date scale status title client project © ALL COPYRIGHTS RESERVED ALL DIMENSIONS TO BE CHECKED ON SITE

**spaceAgent**  
 Architects and Designers mail@spaceagent.com  
 London-Heidelberg-Barcelona-Brussels spaceagent.com  
 spaceAgent Architects Ltd is a RIBA Chartered Practice

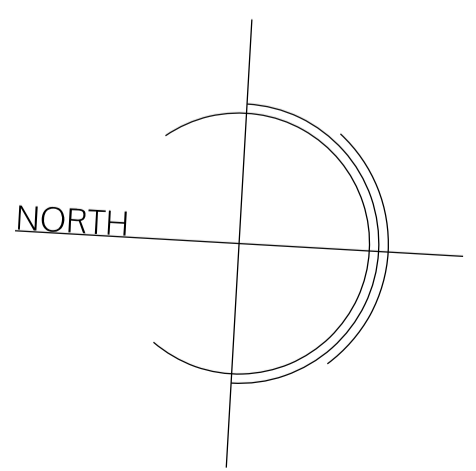
Conversion to residential  
 227 Shepherds Bush Road  
 London W6 7AS

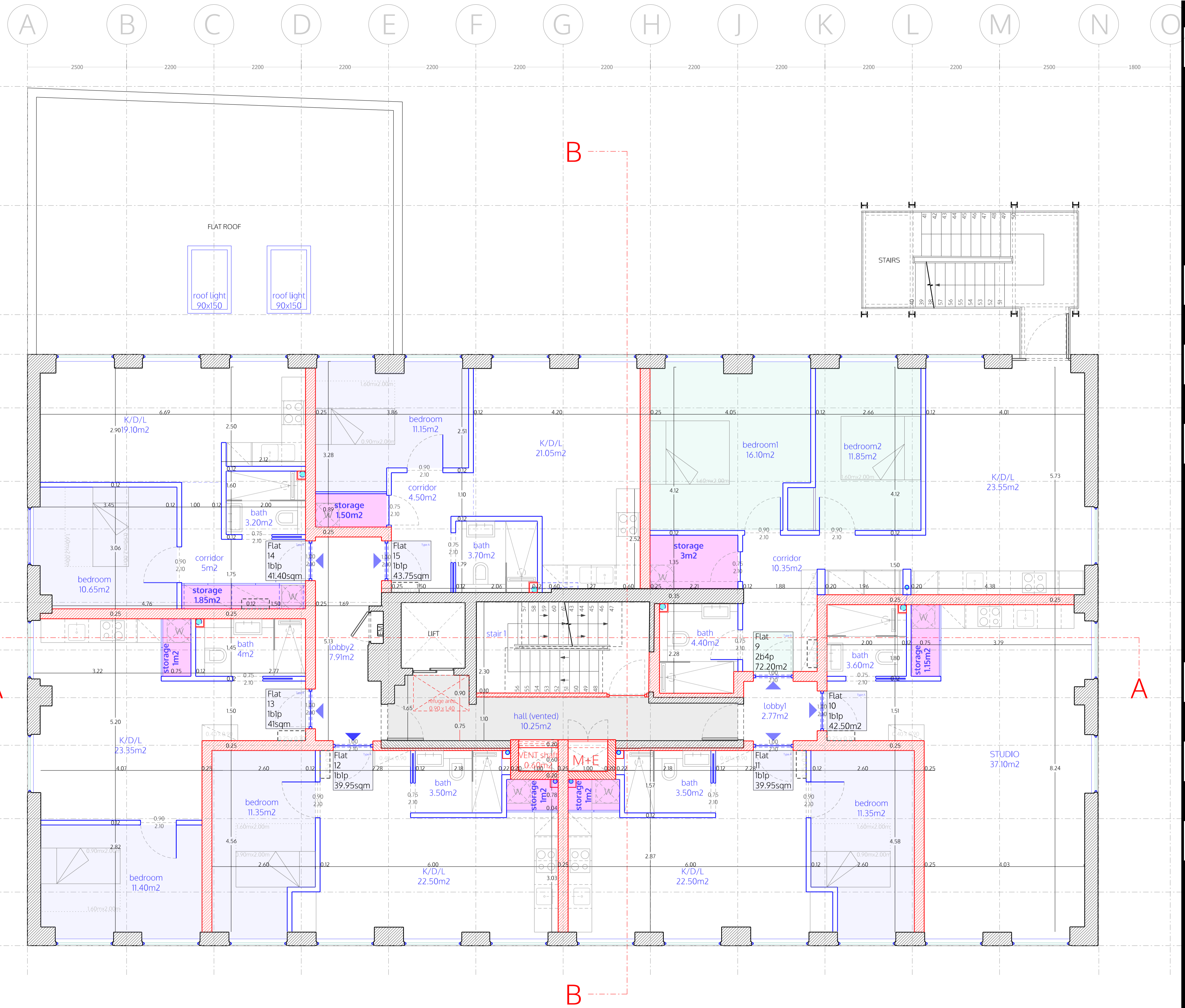
227 SBR LTD  
 London

First floor plan  
 as proposed  
 rev. A= scheme ALL (combined)

<b>DRAFT</b>	
	1:100 @A3 1:50 @A1
	18.07.2025
	I.lezzi
<b>SHE_P03a16c</b>	

**FIRST FLOOR**





- LEGEND**
- Existing
  - Demolition
  - Partitions between flats
  - Fire rated and sound proofing
  - Internal partitions

no. drawn date scale status project client title

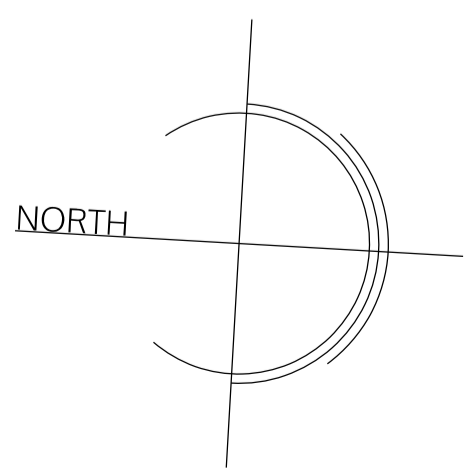
**spaceAgent**  
 Architects and Designers mail@spaceagent.com  
 London-Heidelberg-Barcelona-Brussels spaceagent.com  
 spaceAgent Architects Ltd is a RIBA Chartered Practice

Conversion to residential  
 227 Shepherds Bush Road  
 London W6 7AS

227 SBR LTD  
 London

Second floor plan  
 as proposed  
 rev. A= scheme ALL (combined)

<b>DRAFT</b>	
	1:100 @A3 1:50 @A1
	18.07.2025
	I.lezzi
<b>SHE_P04a16c</b>	

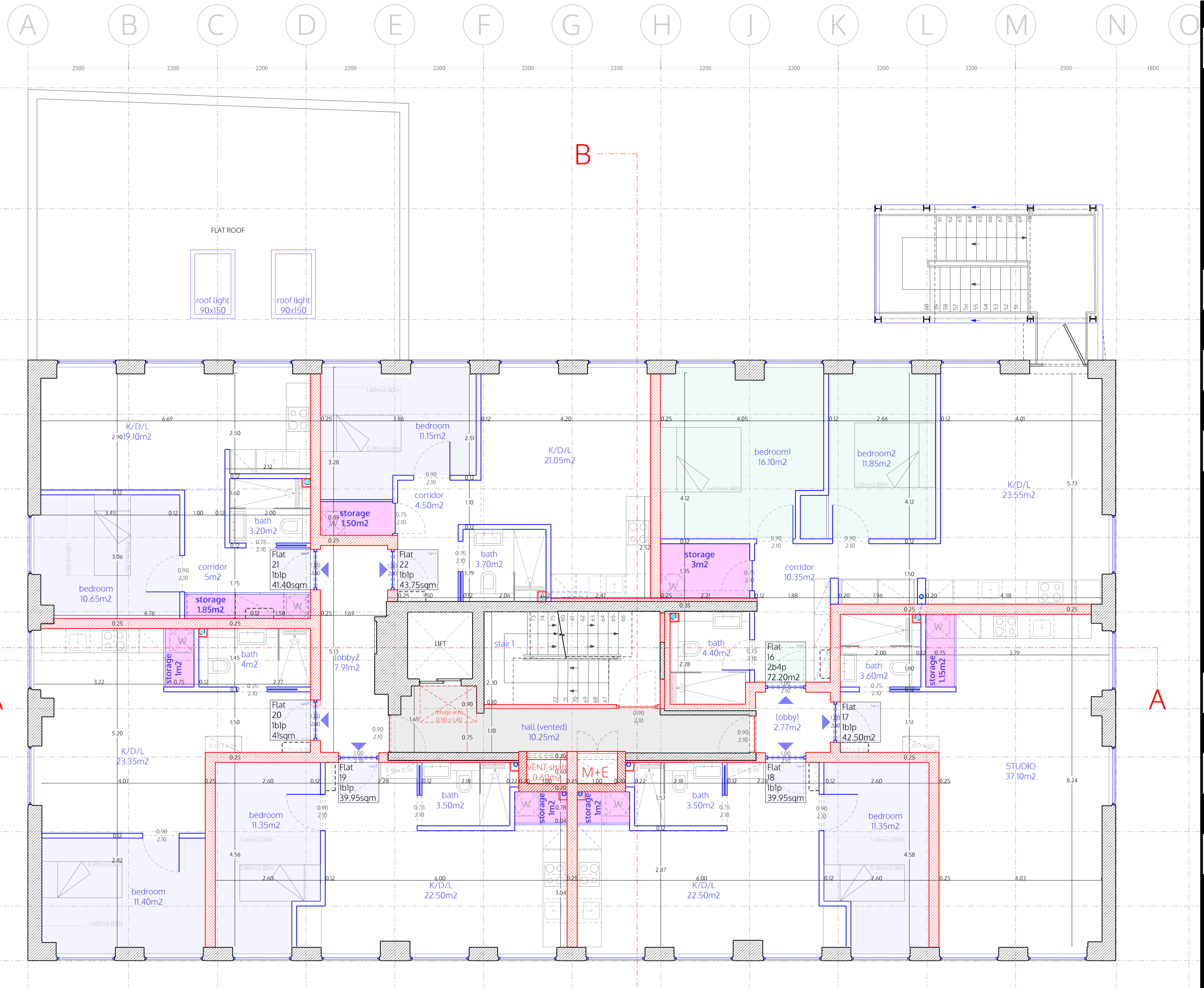


**SECOND FLOOR**

14  
13  
12  
11  
10  
9  
8  
7  
6  
5  
4  
3  
2  
1

A B C D E F G H J K L M N O

ALL DIMENSIONS TO BE CHECKED ON SITE



- LEGEND**
- Existing
  - Demolition
  - Partitions between flats
  - Fire rated and sound proofing
  - Internal partitions

no. drawn date scale status title client project © ALL COPYRIGHTS RESERVED m10 ALL DIMENSIONS TO BE CHECKED ON SITE

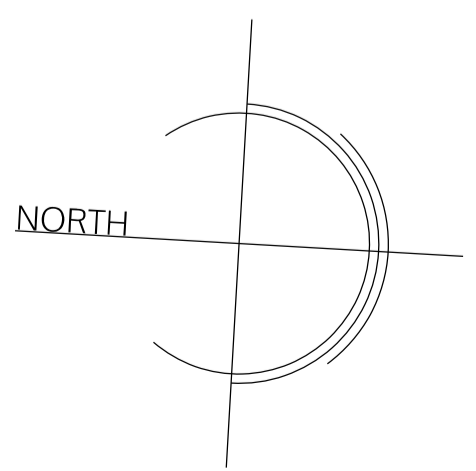
**spaceAgent**  
 Architects and Designers mail@spaceagent.com  
 London-Heidelberg-Barcelona-Brussels spaceagent.com  
 spaceAgent Architects Ltd is a RIBA Chartered Practice

Conversion to residential  
 227 Shepherds Bush Road  
 London W6 7AS

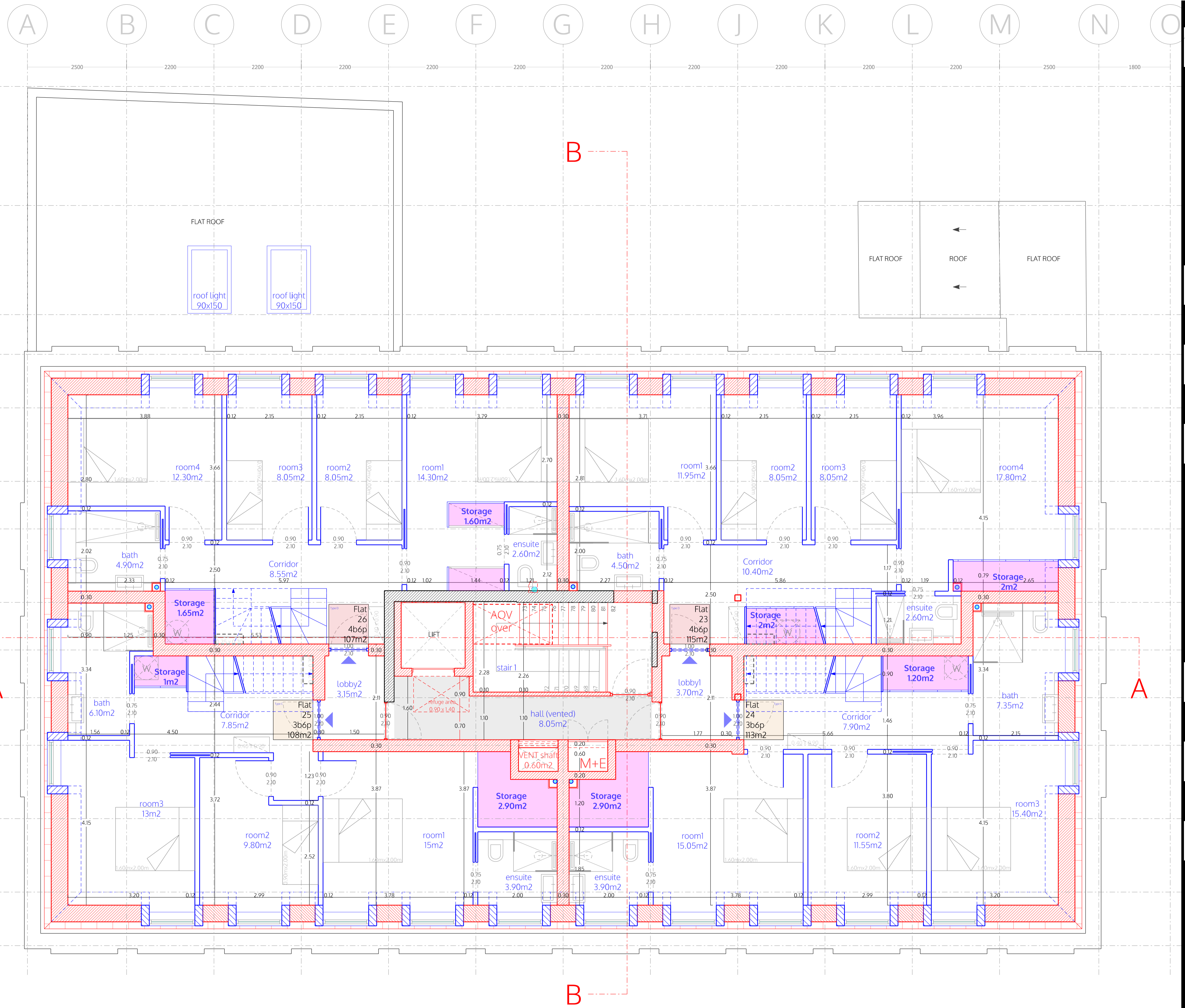
227 SBR LTD  
 London

Third floor plan  
 as proposed  
 rev. A= scheme ALL (combined)

<b>DRAFT</b>	
	1:100 @A3 1:50 @A1
	18.07.2025
	I.lezzi
<b>SHE_P05a16c</b>	



**THIRD FLOOR**



- LEGEND**
- Existing
  - Demolition
  - Partitions between flats
  - Fire rated and sound proofing
  - Internal partitions

**spaceAgent**  
 Architects and Designers mail@spaceagent.com  
 London-Heidelberg-Barcelona-Brussels spaceagent.com  
 spaceAgent Architects Ltd is a RIBA Chartered Practice

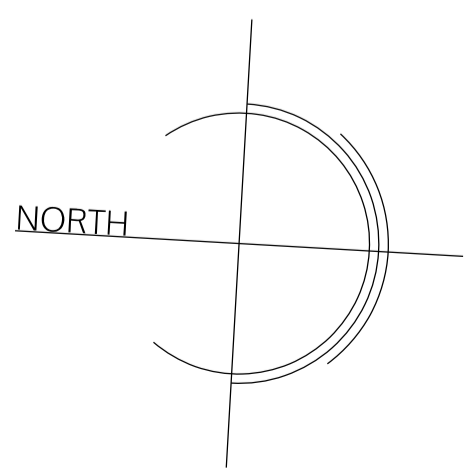
Conversion to residential  
 227 Shepherds Bush Road  
 London W6 7AS

227 SBR LTD  
 London

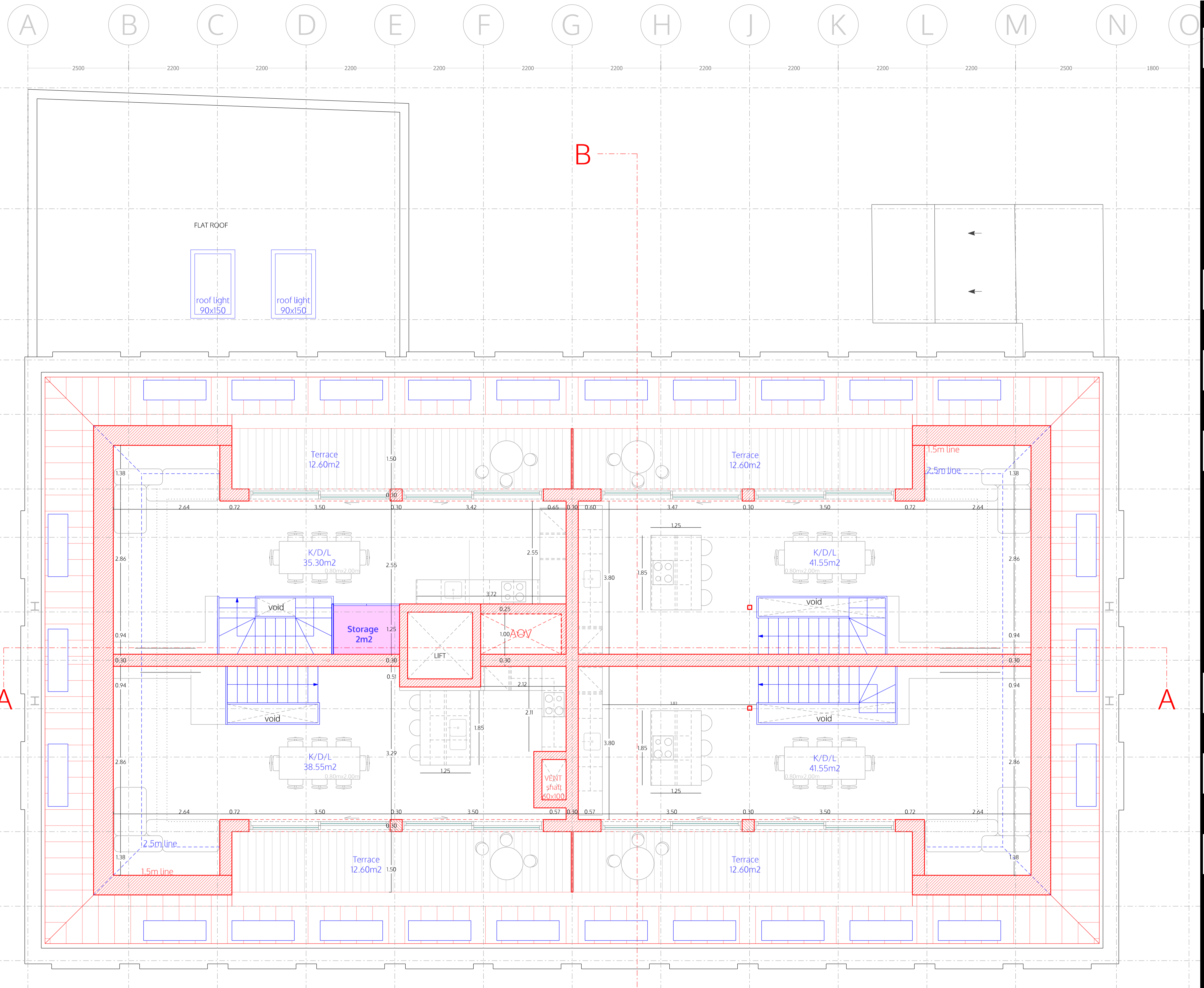
Fourth floor plan  
 as proposed  
 rev. A= scheme ALL (combined)

<b>DRAFT</b>	
	1:100 @A3 1:50 @A1
	18.07.2025
	I.lezzi
<b>SHE_P06a16c</b>	

no. drawn date scale status title client project © ALL COPYRIGHTS RESERVED m10 ALL DIMENSIONS TO BE CHECKED ON SITE



**FOURTH FLOOR**



- LEGEND**
- Existing
  - Demolition
  - Partitions between flats
  - Fire rated and sound proofing
  - Internal partitions

no. drawn date scale status title client project © ALL COPYRIGHTS RESERVED m10

**spaceAgent**  
 Architects and Designers mail@spaceagent.com  
 London-Heidelberg-Barcelona-Brussels spaceagent.com  
 spaceAgent Architects Ltd is a RIBA Chartered Practice

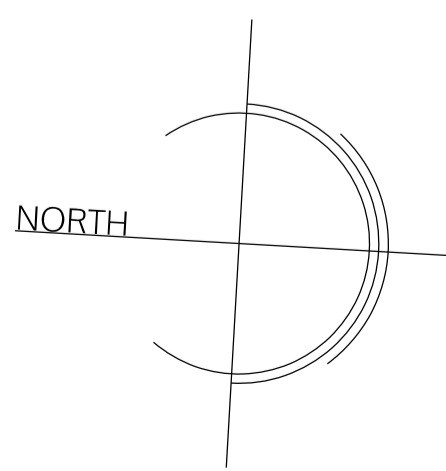
Conversion to residential  
 227 Shepherds Bush Road  
 London W6 7AS

227 SBR LTD  
 London

Fifth floor plan  
 as proposed  
 rev. A= scheme ALL (combined)

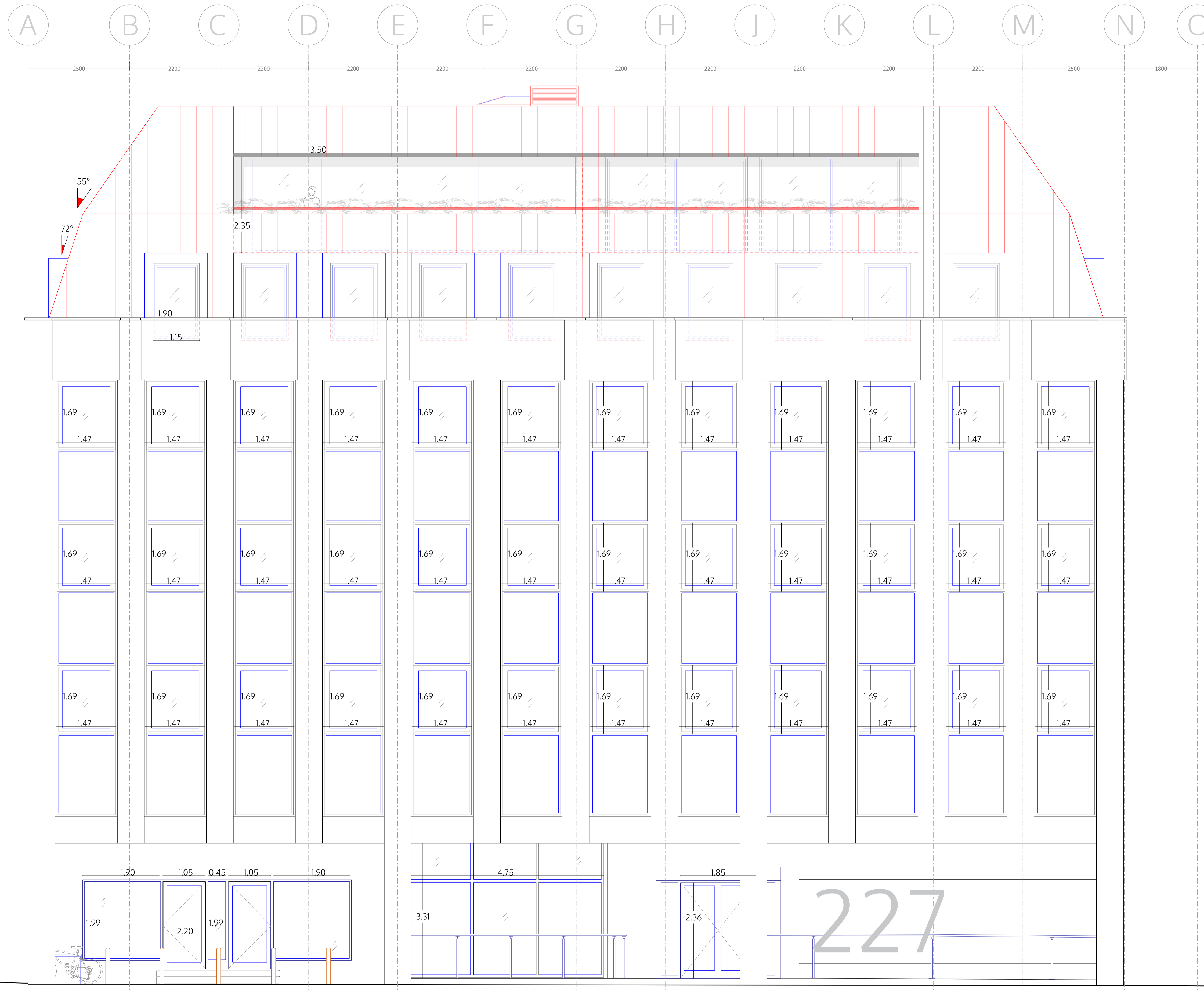
<b>DRAFT</b>	
	1:100 @A3 1:50 @A1
	18.07.2025
	I.lezzi
<b>SHE_P07a16c</b>	

**FIFTH FLOOR**



14  
13  
12  
11  
10  
9  
8  
7  
6  
5  
4  
3  
2  
1

A B C D E F G H J K L M N O



FRONT ELEVATION (WEST)

no. drawn date scale status title client project © ALL COPYRIGHTS RESERVED m 0 1 2 3 4 5 ALL DIMENSIONS TO BE CHECKED ON SITE

**spaceAgent**  
 Architects and Designers [mail@spaceagent.com](mailto:mail@spaceagent.com)  
 London-Heidelberg-Barcelona-Brussels [spaceagent.com](http://spaceagent.com)  
 spaceAgent Architects Ltd is a RIBA Chartered Practice

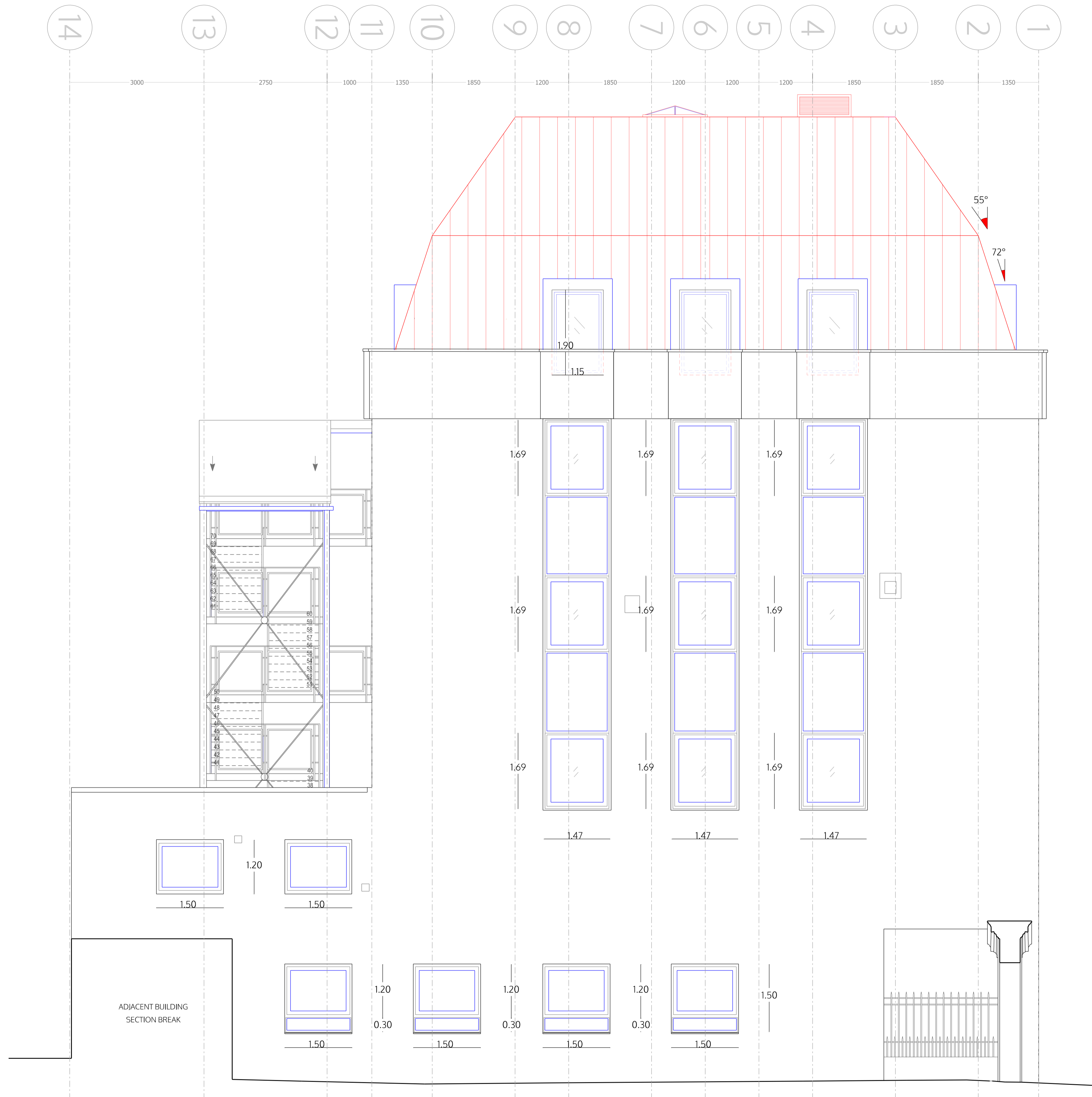
Conversion to residential  
 227 Shepherds Bush Road  
 London W6 7AS

227 SBR LTD  
 London

Front elevation (West)  
 as proposed  
 rev. A= scheme ALL (combined)

<b>DRAFT</b>	
	1:100 @A3 1:50 @A1
	18.07.2025
	I.lezzi

**SHE\_P08a16c**



NORTH ELEVATION

no. drawn date scale status title client project © ALL COPYRIGHTS RESERVED m 0 1 2 3 4 5 ALL DIMENSIONS TO BE CHECKED ON SITE

# spaceAgent

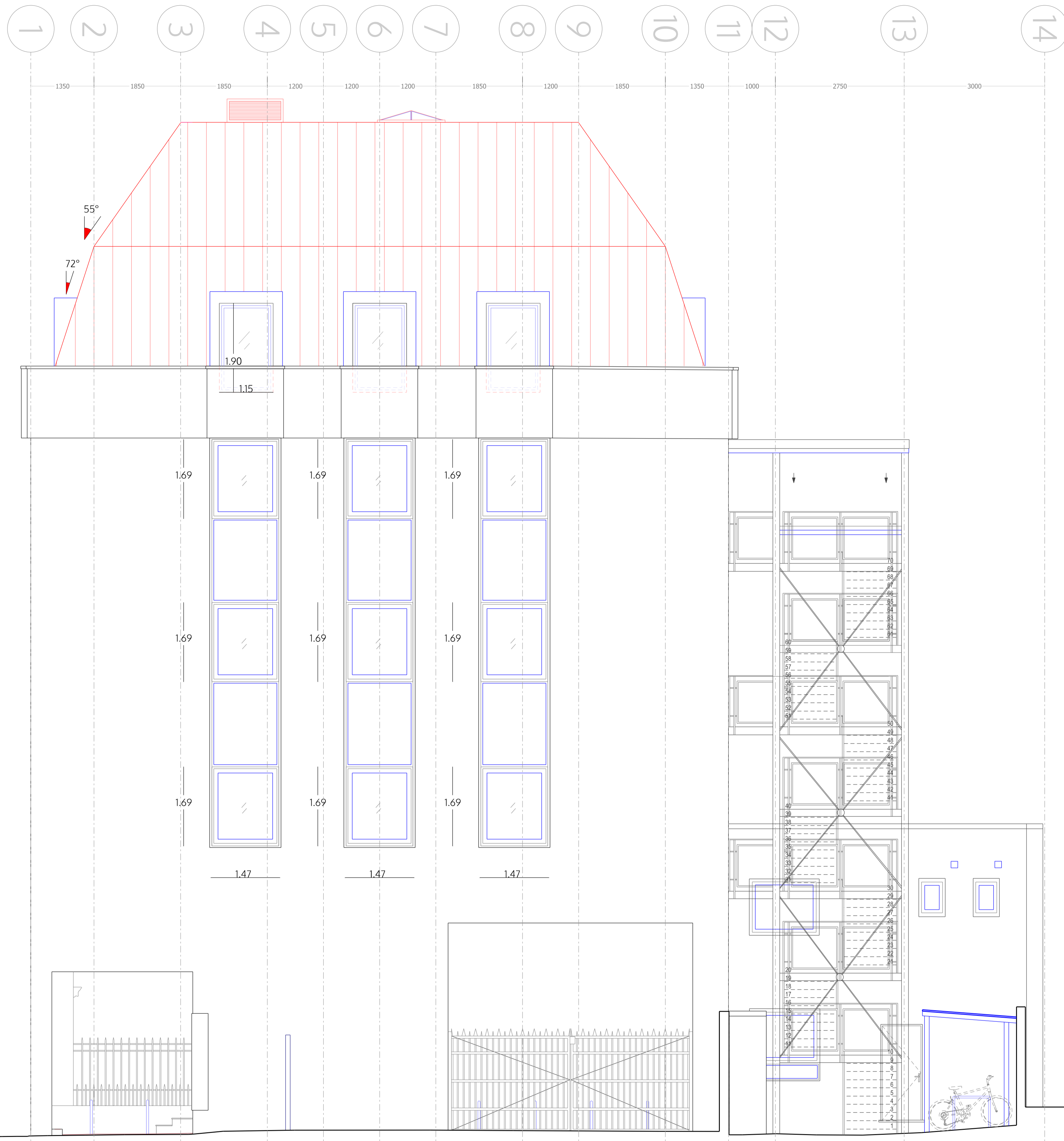
Architects and Designers [mail@spaceagent.com](mailto:mail@spaceagent.com)  
 London-Heidelberg-Barcelona-Brussels [spaceagent.com](http://spaceagent.com)  
 spaceAgent Architects Ltd is a RIBA Chartered Practice

Conversion to residential  
 227 Shepherds Bush Road  
 London W6 7AS

227 SBR LTD  
 London

North elevation  
 as proposed  
 rev. A= scheme ALL (combined)

DRAFT	
	1:100 @A3 1:50 @A1
	18.07.2025
	I.lezzi
SHE_P09a16c	



SOUTH ELEVATION

no. drawn date scale status title client project © ALL COPYRIGHTS RESERVED m 0 1 2 3 4 5 ALL DIMENSIONS TO BE CHECKED ON SITE

**spaceAgent**

Architects and Designers mail@spaceagent.com  
 London-Heidelberg-Barcelona-Brussels spaceagent.com  
 spaceAgent Architects Ltd is a RIBA Chartered Practice

Conversion to residential  
 227 Shepherds Bush Road  
 London W6 7AS

227 SBR LTD  
 London

South elevation  
 as proposed  
 rev. A= scheme ALL (combined)





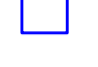
DRAFT	
	1:100 @A3 1:50 @A1
	18.07.2025
	I.lezzi
SHE_P10a16c	

SHEPPERDS BUSH ROAD

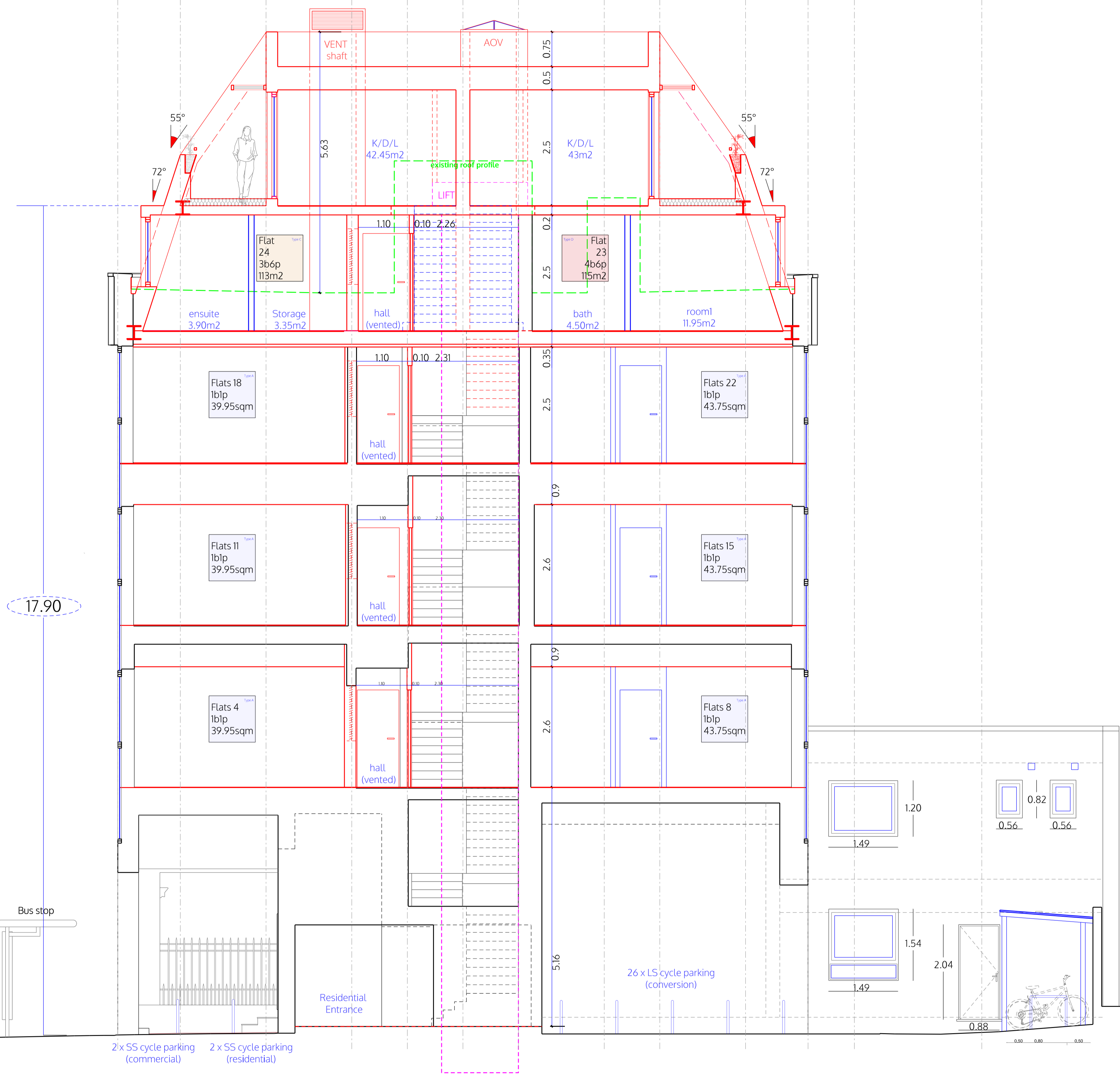
Bus stop

1 2 3 4 5 6 7 8 9 10 11 12 13 14

LEGEND

-  Existing
-  Demolition
-  Partitions between flats
-  Fire rated and sound proofing
-  Internal partitions

no. drawn date scale status title client project © ALL COPYRIGHTS RESERVED m 0 1 2 3 4 5 ALL DIMENSIONS TO BE CHECKED ON SITE



SECTION B-B

spaceAgent

Architects and Designers mail@spaceagent.com  
 London-Heidelberg-Barcelona-Brussels spaceagent.com  
 spaceAgent Architects Ltd is a RIBA Chartered Practice

Conversion to residential  
 227 Shepherds Bush Road  
 London W6 7AS

227 SBR LTD  
 London

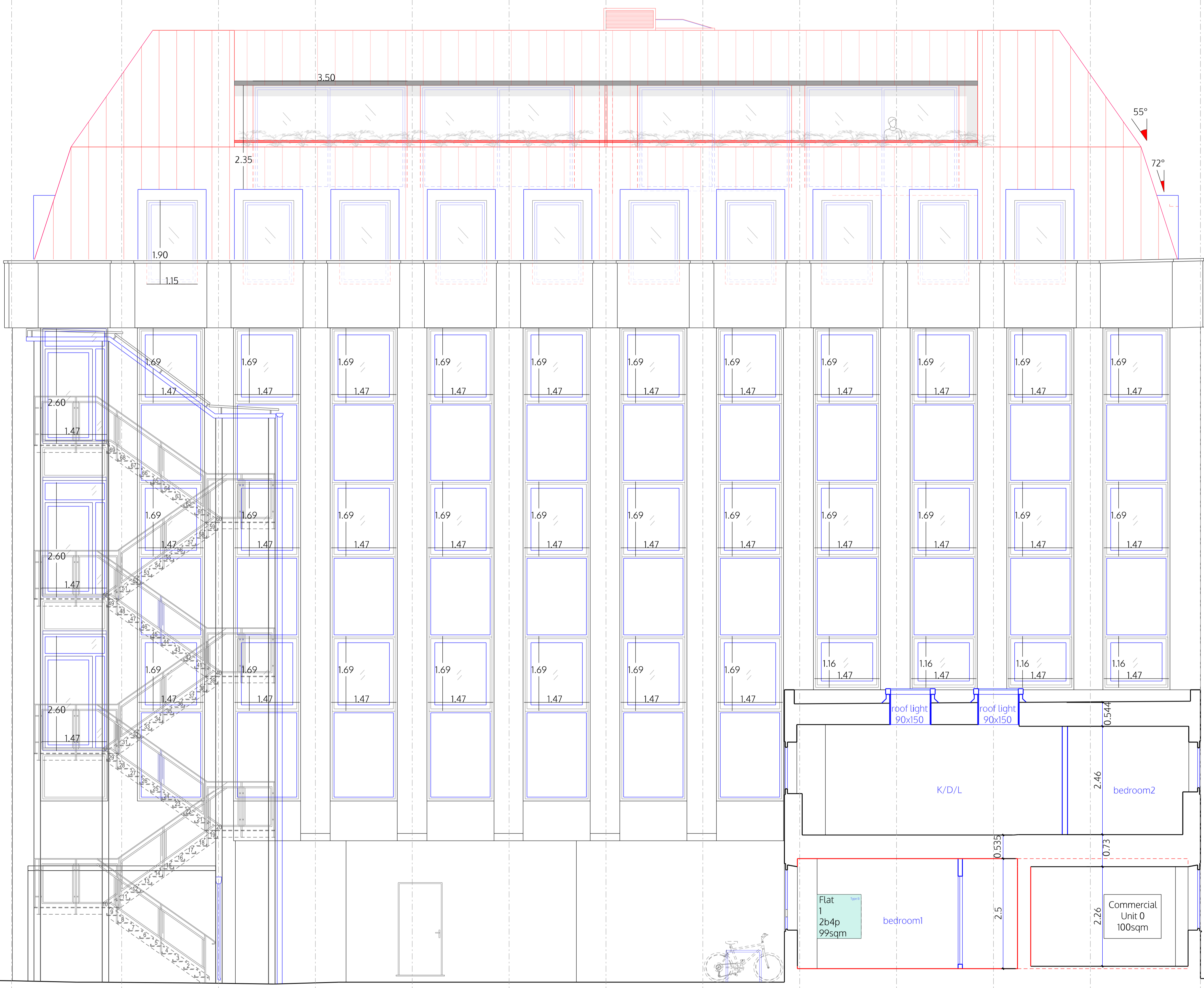
Section B-B  
 as proposed  
 rev. A= scheme ALL (combined)

DRAFT	
	1:100 @A3 1:50 @A1
	18.07.2025
	I.lezzi

SHE\_P11a16c

O N M L K J H G F E D C B A

1800 2500 2200 2200 2200 2200 2200 2200 2200 2200 2200 2200 2500



26 x LS cycle parking (conversion)

BACK ELEVATION (EAST)

no. drawn date scale status title client project © ALL COPYRIGHTS RESERVED m 0 1 2 3 4 5 ALL DIMENSIONS TO BE CHECKED ON SITE

spaceAgent

Architects and Designers mail@spaceagent.com  
 London-Heidelberg-Barcelona-Brussels spaceagent.com  
 spaceAgent Architects Ltd is a RIBA Chartered Practice

Conversion to residential  
 227 Shepherds Bush Road  
 London W6 7AS

227 SBR LTD  
 London

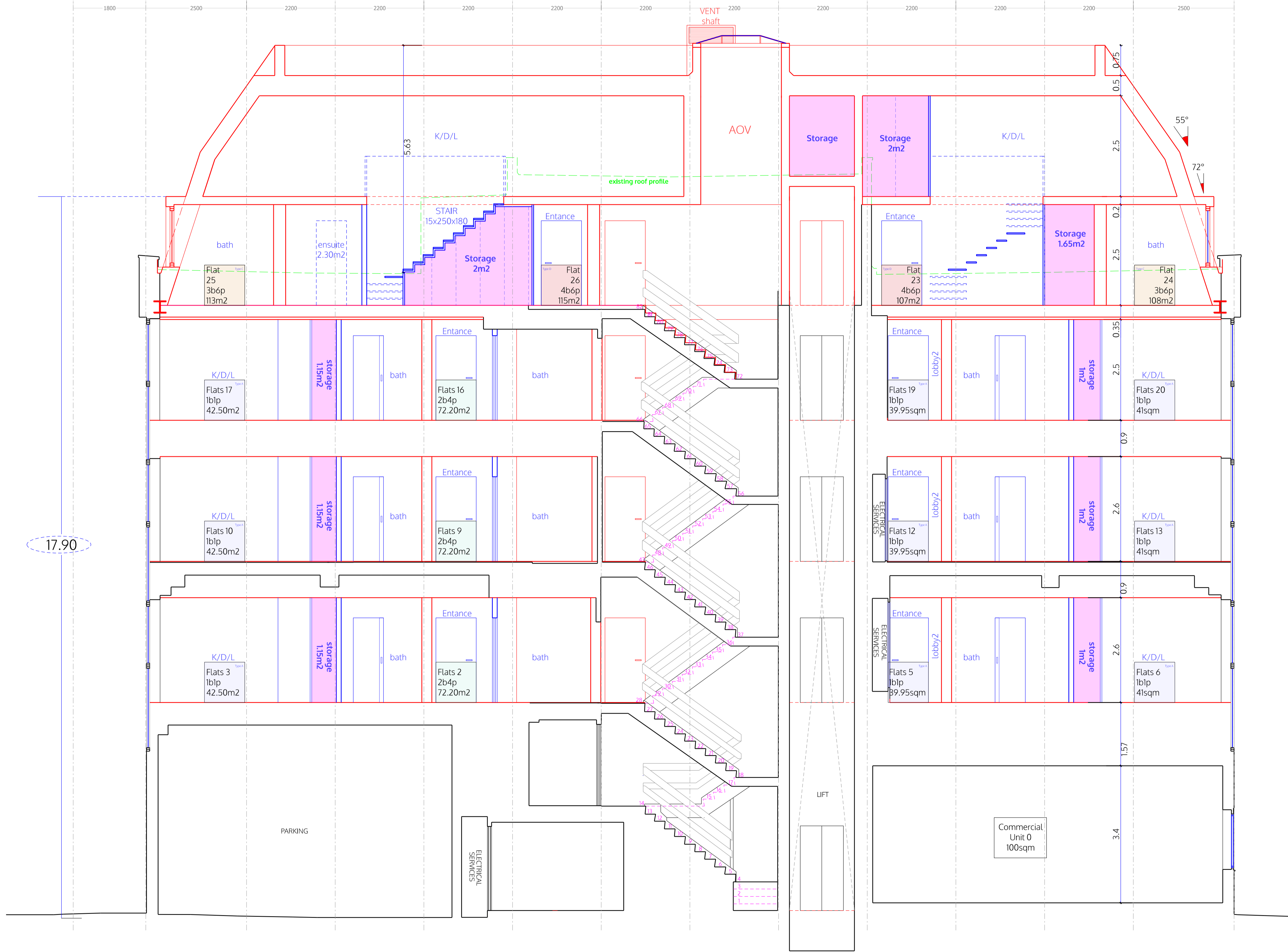
Back elevation (East)  
 as proposed  
 rev. A= scheme ALL (combined)

DRAFT	
	1:100 @A3 1:50 @A1
	18.07.2025
	I.lezzi

SHE\_P12a16c

O N M L K J H G F E D C B A

1800 2500 2200 2200 2200 2200 2200 2200 2200 2200 2200 2500



- LEGEND**
- Existing
  - Demolition
  - Partitions between flats
  - Fire rated and sound proofing
  - Internal partitions

no. drawn date scale status title client project © ALL COPYRIGHTS RESERVED m 0 1 2 3 4 5 ALL DIMENSIONS TO BE CHECKED ON SITE

17.90

SECTION A-A

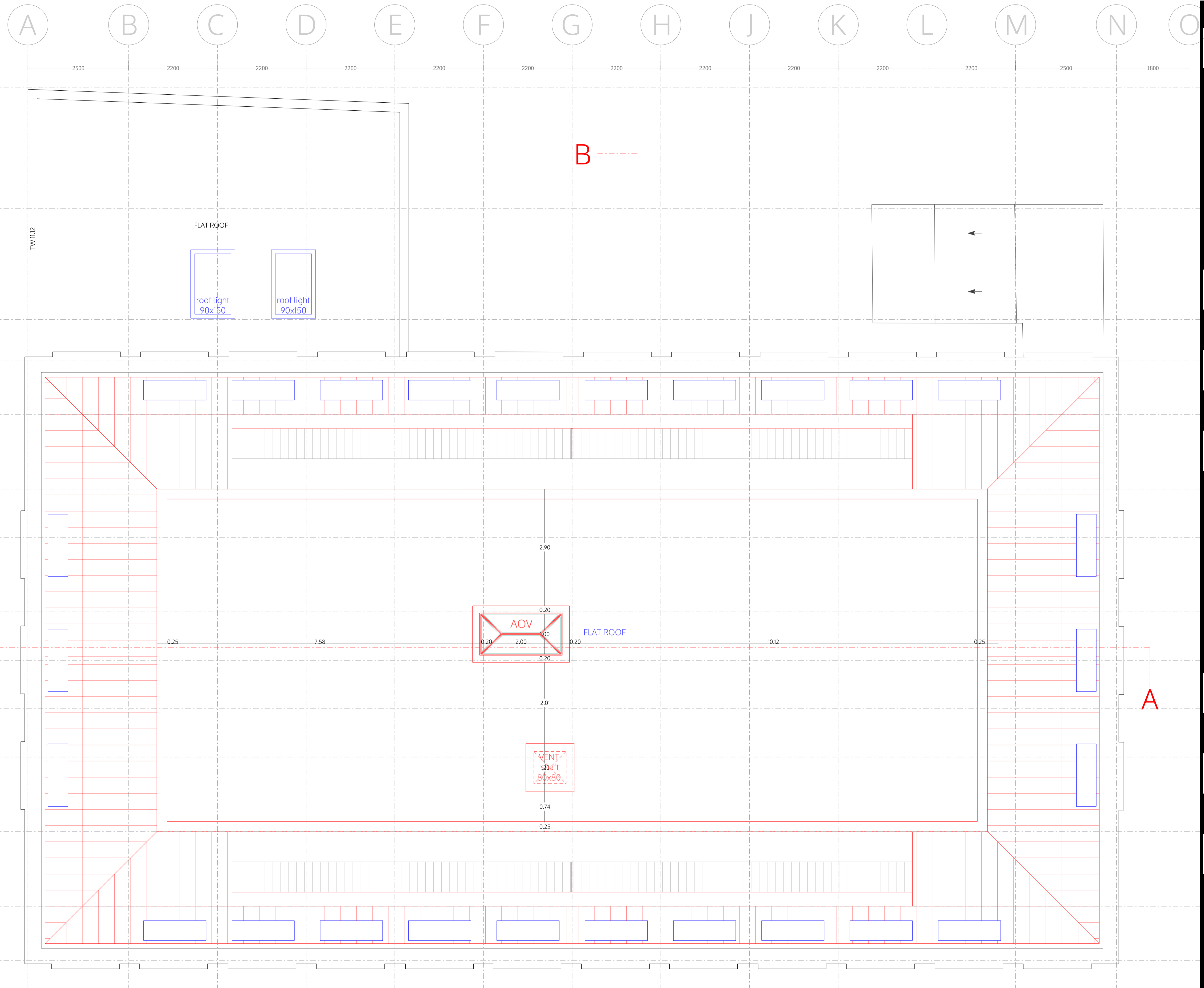
**spaceAgent**  
 Architects and Designers mail@spaceagent.com  
 London-Heidelberg-Barcelona-Brussels spaceagent.com  
 spaceAgent Architects Ltd is a RIBA Chartered Practice

Conversion to residential  
 227 Shepherds Bush Road  
 London W6 7AS

227 SBR LTD  
 London

Section A-A  
 as proposed  
 rev. A= scheme ALL (combined)

<b>DRAFT</b>	
	1:100 @A3 1:50 @A1
	18.07.2025
	I.lezzi
<b>SHE_P13a16c</b>	



- LEGEND**
- Existing
  - Demolition
  - Partitions between flats
  - Fire rated and sound proofing
  - Internal partitions

no. drawn date scale status title client project © ALL COPYRIGHTS RESERVED m 0 1 2 3 4 5 ALL DIMENSIONS TO BE CHECKED ON SITE

**spaceAgent**  
 Architects and Designers [mail@spaceagent.com](mailto:mail@spaceagent.com)  
 London-Heidelberg-Barcelona-Brussels [spaceagent.com](http://spaceagent.com)  
 spaceAgent Architects Ltd is a RIBA Chartered Practice

Conversion to residential  
 227 Shepherds Bush Road  
 London W6 7AS

227 SBR LTD  
 London

Roof plan  
 as proposed  
 rev. A= scheme ALL (combined)

<b>DRAFT</b>	
	1:100 @A3 1:50 @A1
	18.07.2025
	I.lezzi

SHE\_P14a16c

ROOF

