

GROUND FLOOR

SHEPPERDS BUSH ROAD

LEGEND

- Existing
- Demolition
- Partitions between flats
- Fire rated and sound proofing
- Internal partitions

no. drawn date scale status title client project © ALL COPYRIGHTS RESERVED m 0 1 2 3 4 5 ALL DIMENSIONS TO BE CHECKED ON SITE

spaceAgent

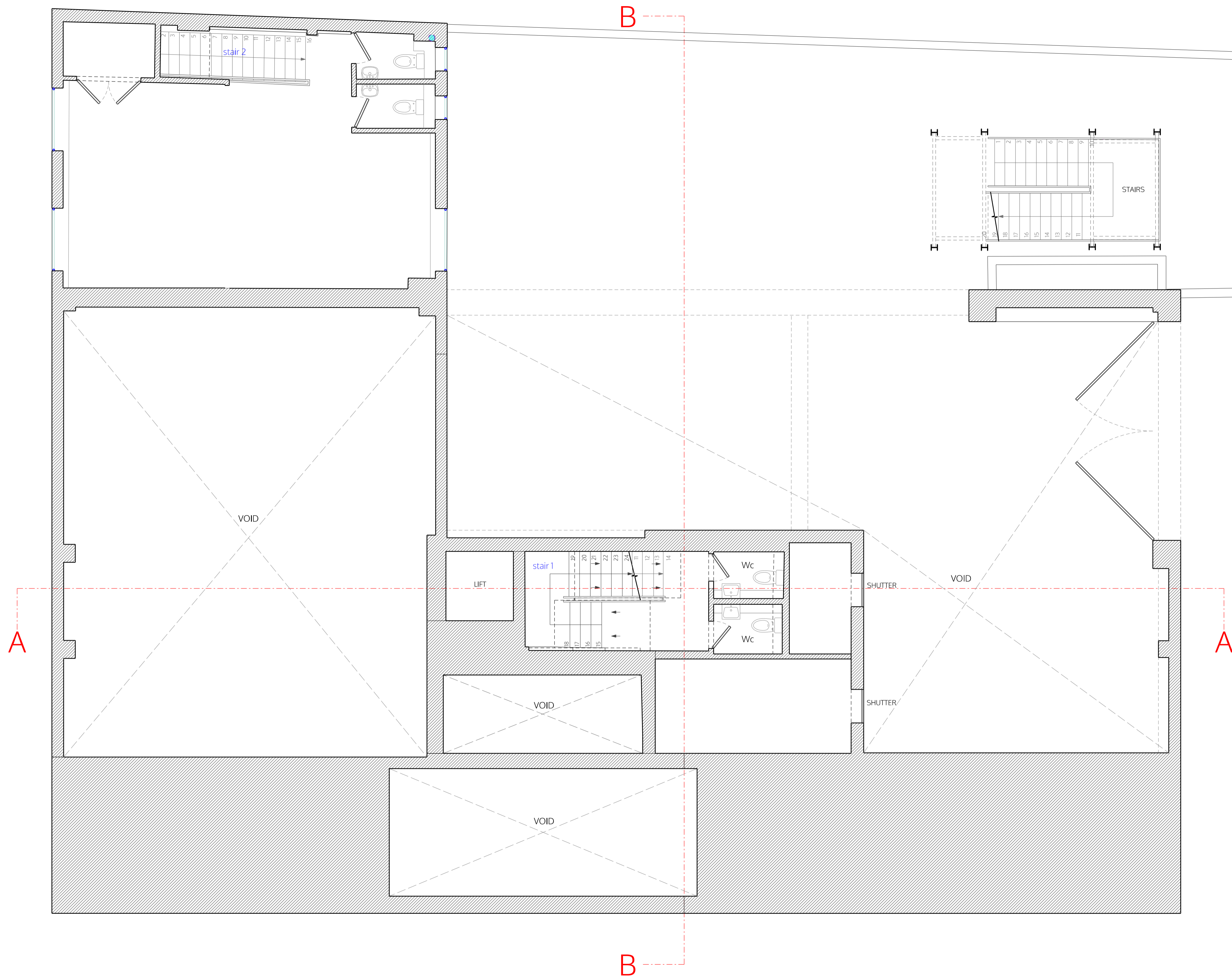
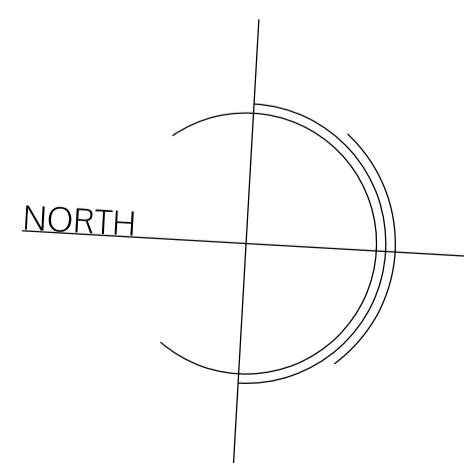
Architects and Designers mail@spaceagent.com
 London-Heidelberg-Barcelona-Brussels spaceagent.com
 spaceAgent Architects Ltd is a RIBA Chartered Practice

Conversion to residential
 227 Shepherds Bush Road
 London W6 7AS






227 SBR LTD
 London

Ground floor plan
 as proposed
 rev. B = (Upward extension) Class AA

Planning only	
	1:100 @A3 1:50 @A1
	28.05.2025
	I.lezzi
SHE_P01b16	



LEGEND

-  Existing
-  Demolition
-  Partitions between flats
-  Fire rated and sound proofing
-  Internal partitions

no. drawn date scale status title client project © ALL COPYRIGHTS RESERVED m 0 1 2 3 4 5 ALL DIMENSIONS TO BE CHECKED ON SITE

spaceAgent

Architects and Designers mail@spaceagent.com
 London-Heidelberg-Barcelona-Brussels spaceagent.com
 spaceAgent Architects Ltd is a RIBA Chartered Practice

Conversion to residential
 227 Shepherds Bush Road
 London W6 7AS

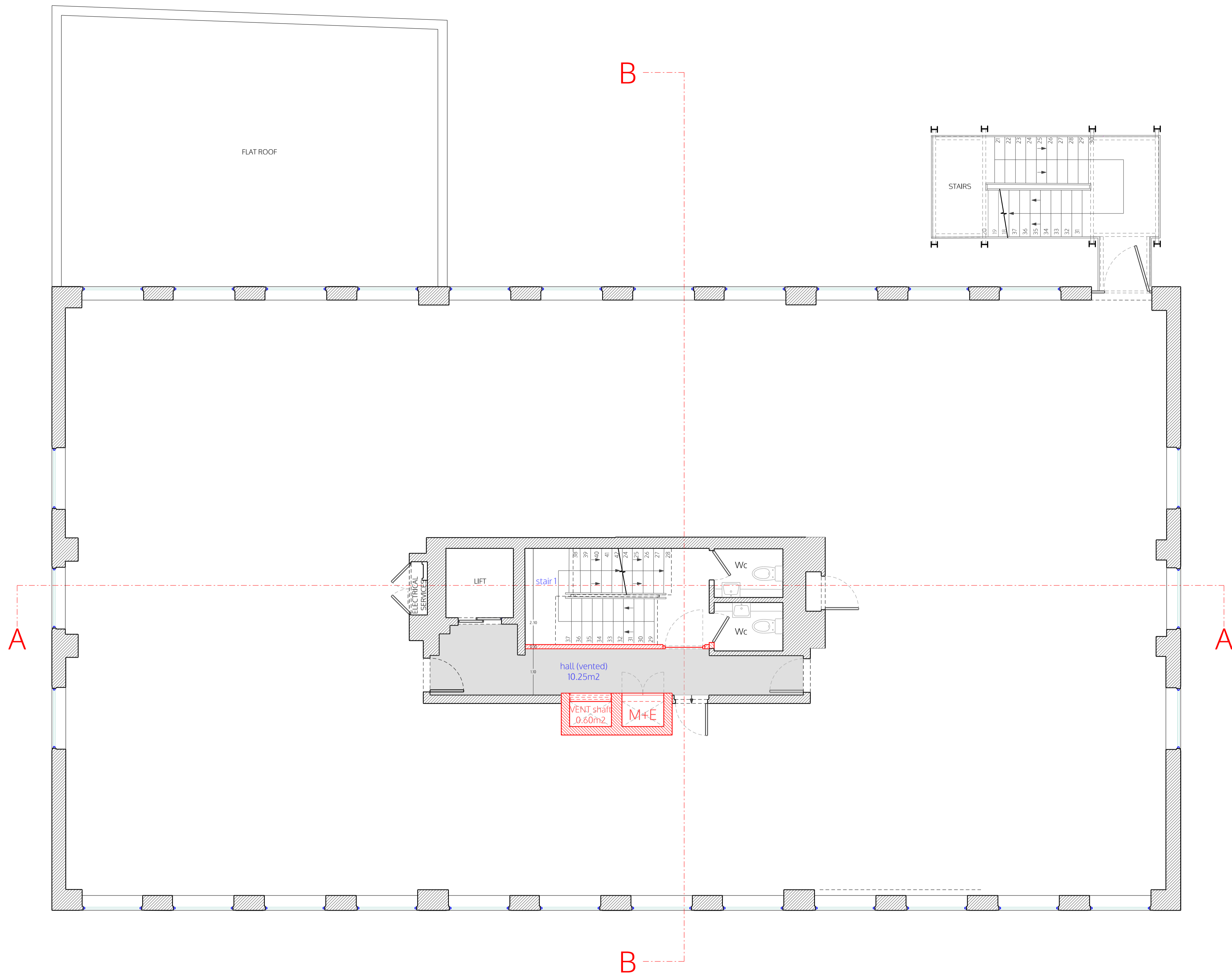
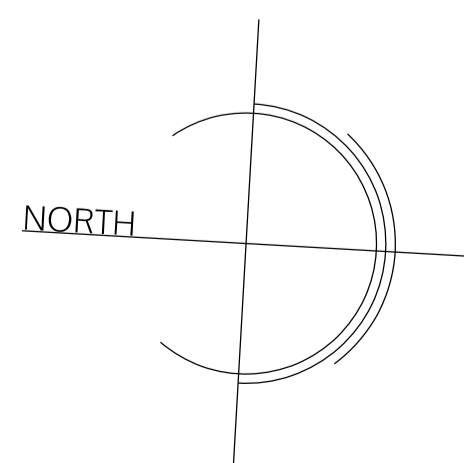
227 SBR LTD
 London

Mezzanine plan
 as proposed
 rev. B = (Upward extension) Class AA

Planning only	
	1:100 @A3 1:50 @A1
	28.05.2025
	I.lezzi





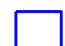
SHE_P02b16

MEZZANINE



FIRST FLOOR

LEGEND

-  Existing
-  Demolition
-  Partitions between flats
-  Fire rated and sound proofing
-  Internal partitions

no. drawn date scale status title client project © ALL COPYRIGHTS RESERVED m 0 1 2 3 4 5 ALL DIMENSIONS TO BE CHECKED ON SITE

spaceAgent

Architects and Designers mail@spaceagent.com
 London-Heidelberg-Barcelona-Brussels spaceagent.com
 spaceAgent Architects Ltd is a RIBA Chartered Practice

Conversion to residential
 227 Shepherds Bush Road
 London W6 7AS

227 SBR LTD
 London

First floor plan
 as proposed
 rev. B = (Upward extension) Class AA

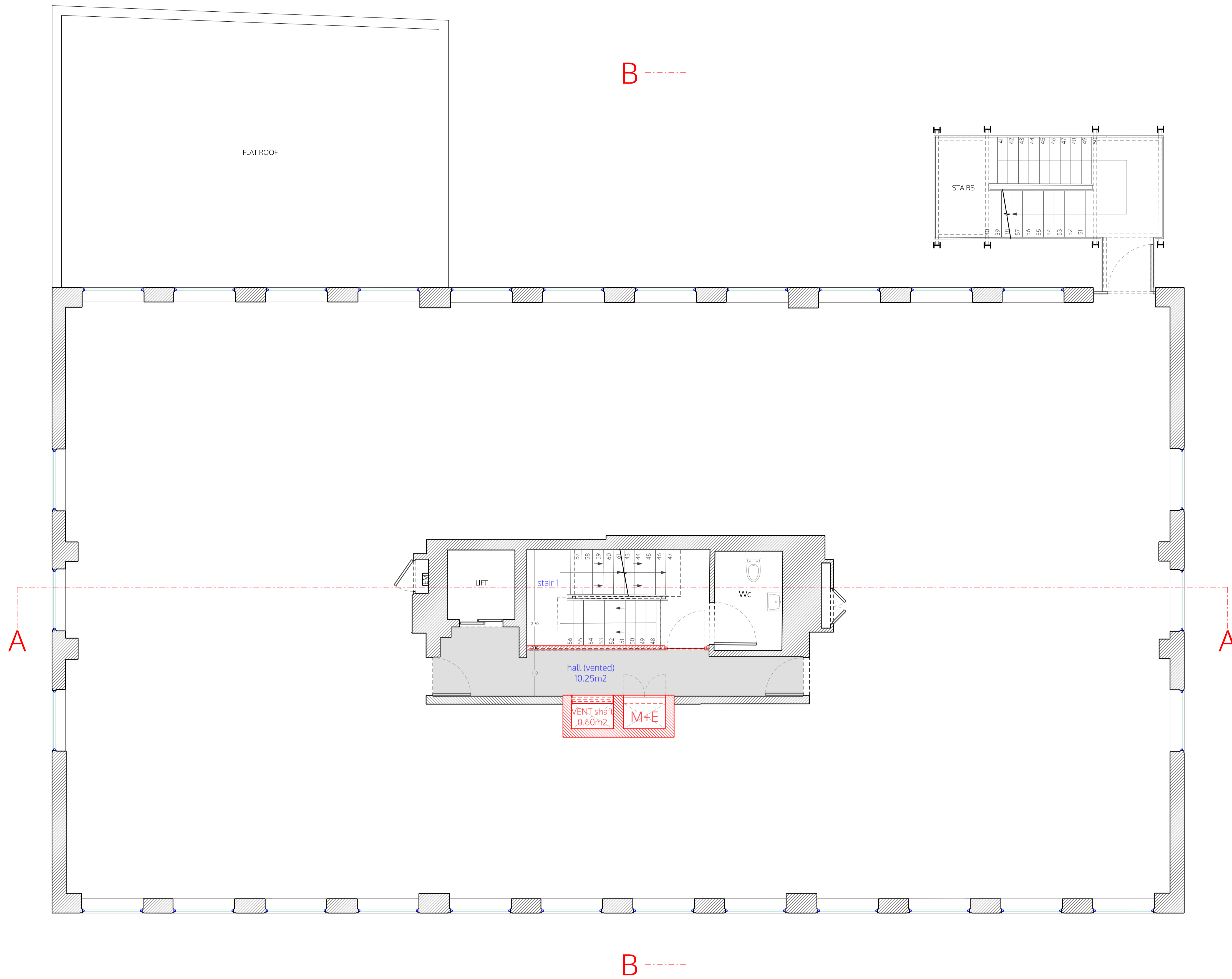
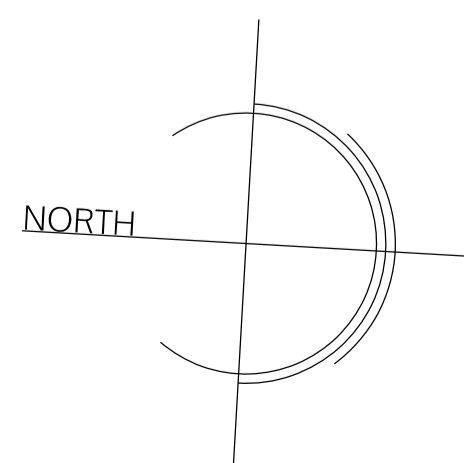
Planning only

1:100 @A3
 1:50 @A1

28.05.2025

I.lezzi

SHE_P03b16



SECOND FLOOR

- LEGEND
- Existing
 - Demolition
 - Partitions between flats
 - Fire rated and sound proofing
 - Internal partitions

no. drawn date scale status title client project © ALL COPYRIGHTS RESERVED m 0 1 2 3 4 5 ALL DIMENSIONS TO BE CHECKED ON SITE

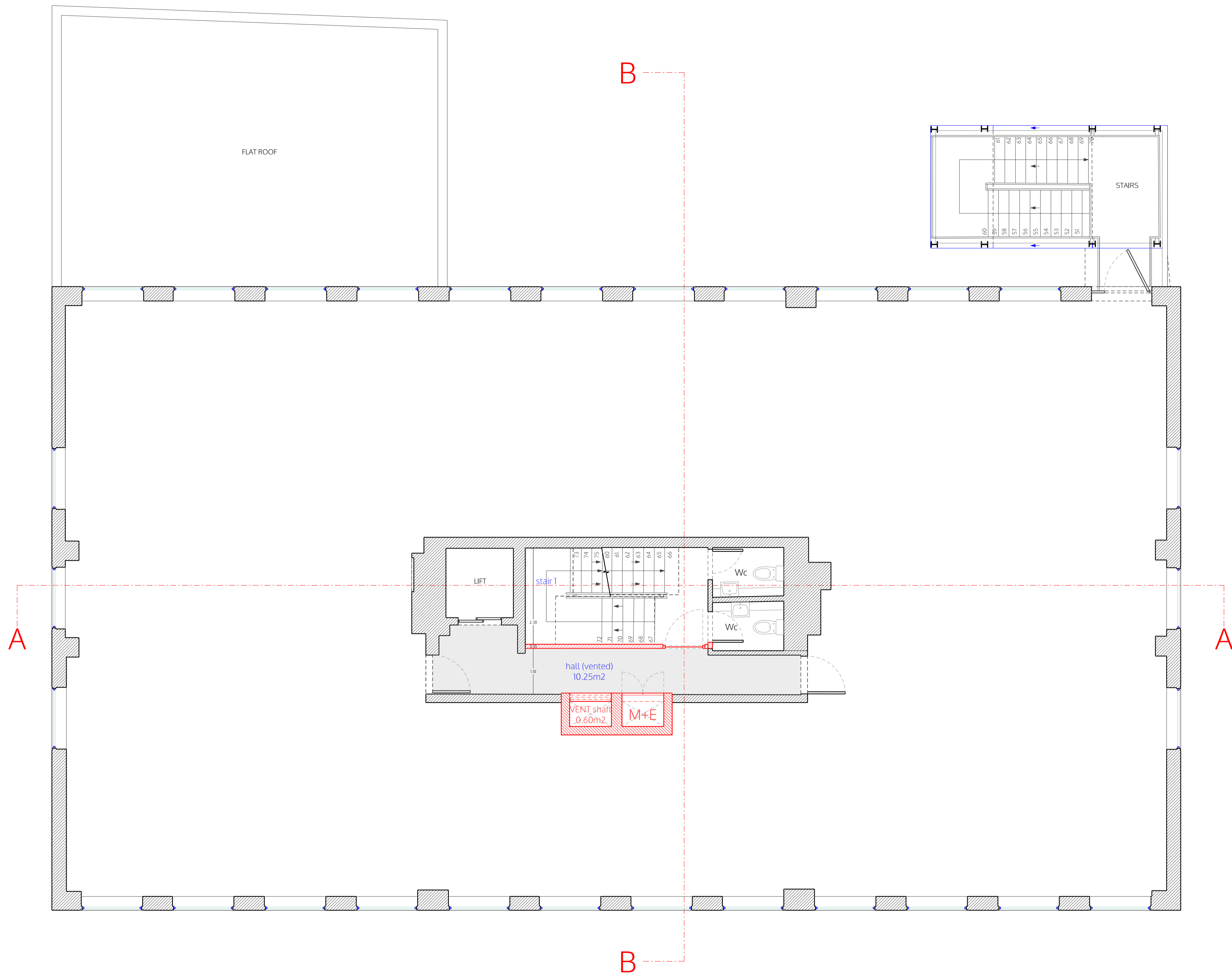
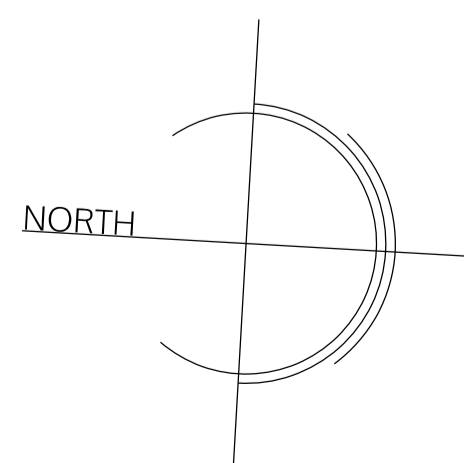
spaceAgent
 Architects and Designers mail@spaceagent.com
 London-Heidelberg-Barcelona-Brussels spaceagent.com
 spaceAgent Architects Ltd is a RIBA Chartered Practice

Conversion to residential
 227 Shepherds Bush Road
 London W6 7AS

227 SBR LTD
 London

Second floor plan
 as proposed
 rev. B = (Upward extension) Class AA

Planning only	
	1:100 @A3 1:50 @A1
	28.05.2025
	I.lezzi
SHE_P04b16	



THIRD FLOOR

- LEGEND
- Existing
 - Demolition
 - Partitions between flats
 - Fire rated and sound proofing
 - Internal partitions

no. drawn date scale status title client project © ALL COPYRIGHTS RESERVED m 0 1 2 3 4 5 ALL DIMENSIONS TO BE CHECKED ON SITE

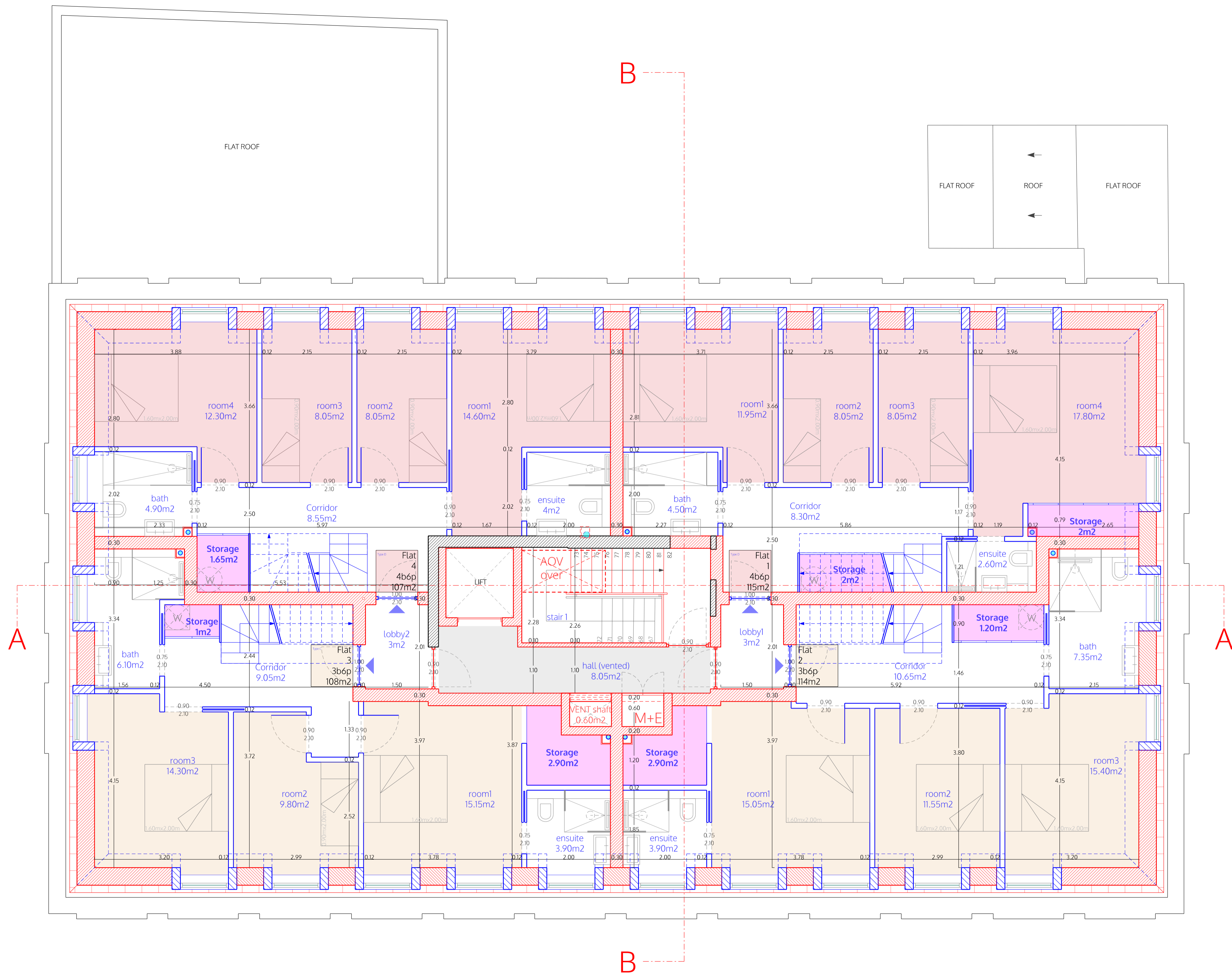
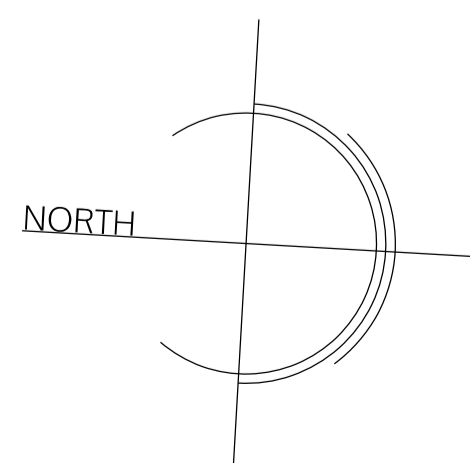
spaceAgent
 Architects and Designers mail@spaceagent.com
 London-Heidelberg-Barcelona-Brussels spaceagent.com
 spaceAgent Architects Ltd is a RIBA Chartered Practice

Conversion to residential
 227 Shepherds Bush Road
 London W6 7AS

227 SBR LTD
 London

Third floor plan
 as proposed
 rev. B = (Upward extension) Class AA

Planning only	
	1:100 @A3 1:50 @A1
	28.05.2025
	I.lezzi
SHE_P05b16	



FOURTH FLOOR

LEGEND

- Existing
- Demolition
- Partitions between flats
- Fire rated and sound proofing
- Internal partitions

no. drawn date scale status title client project © ALL COPYRIGHTS RESERVED m 0 1 2 3 4 5 ALL DIMENSIONS TO BE CHECKED ON SITE

spaceAgent

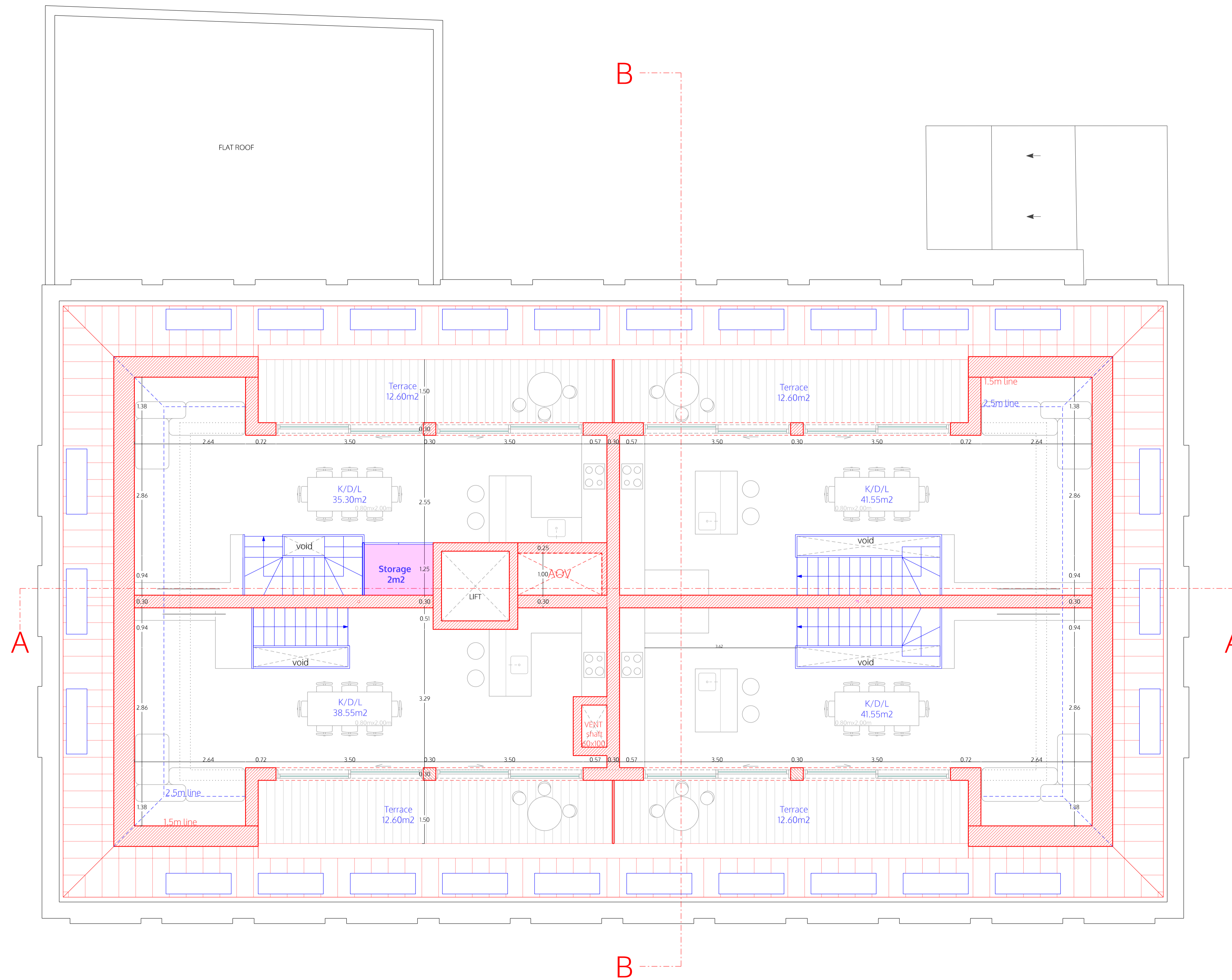
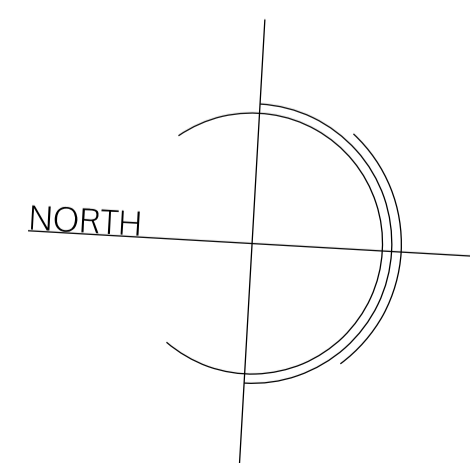
Architects and Designers mail@spaceagent.com
 London-Heidelberg-Barcelona-Brussels spaceagent.com
 spaceAgent Architects Ltd is a RIBA Chartered Practice

Conversion to residential
 227 Shepherds Bush Road
 London W6 7AS

227 SBR LTD
 London

Fourth floor plan
 as proposed
 rev. B = (Upward extension) Class AA

Planning only	
	1:100 @A3 1:50 @A1
	28.05.2025
	I.lezzi
SHE_P06b16	



FIFTH FLOOR

LEGEND

- Existing
- Demolition
- Partitions between flats
- Fire rated and sound proofing
- Internal partitions

no. drawn date scale status title client project © ALL COPYRIGHTS RESERVED m 0 1 2 3 4 5 ALL DIMENSIONS TO BE CHECKED ON SITE

spaceAgent

Architects and Designers mail@spaceagent.com
 London-Heidelberg-Barcelona-Brussels spaceagent.com
 spaceAgent Architects Ltd is a RIBA Chartered Practice

Conversion to residential
 227 Shepherds Bush Road
 London W6 7AS

227 SBR LTD
 London

Fifth floor plan
 as proposed
 rev. B = (Upward extension) Class AA

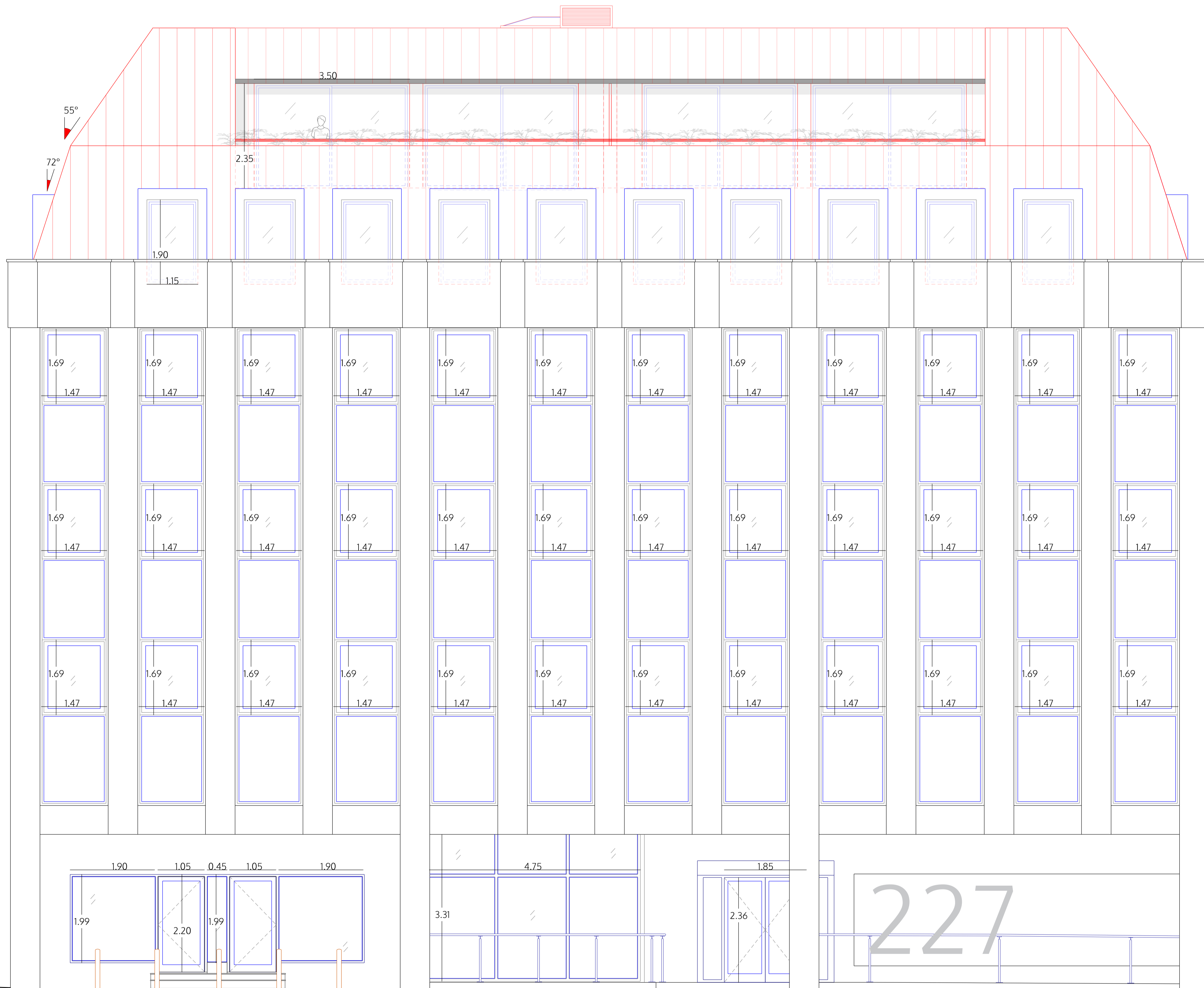
Planning only

1:100 @A3
 1:50 @A1

28.05.2025

I.lezzi

SHE_P07b16



FRONT ELEVATION (WEST)

no. drawn date scale status title client project © ALL COPYRIGHTS RESERVED m 0 1 2 3 4 5 ALL DIMENSIONS TO BE CHECKED ON SITE

spaceAgent

Architects and Designers mail@spaceagent.com
 London-Heidelberg-Barcelona-Brussels spaceagent.com
 spaceAgent Architects Ltd is a RIBA Chartered Practice

Conversion to residential
 227 Shepherds Bush Road
 London W6 7AS

227 SBR LTD
 London

Front elevation (West)
 as proposed
 rev. B = (Upward extension) Class AA

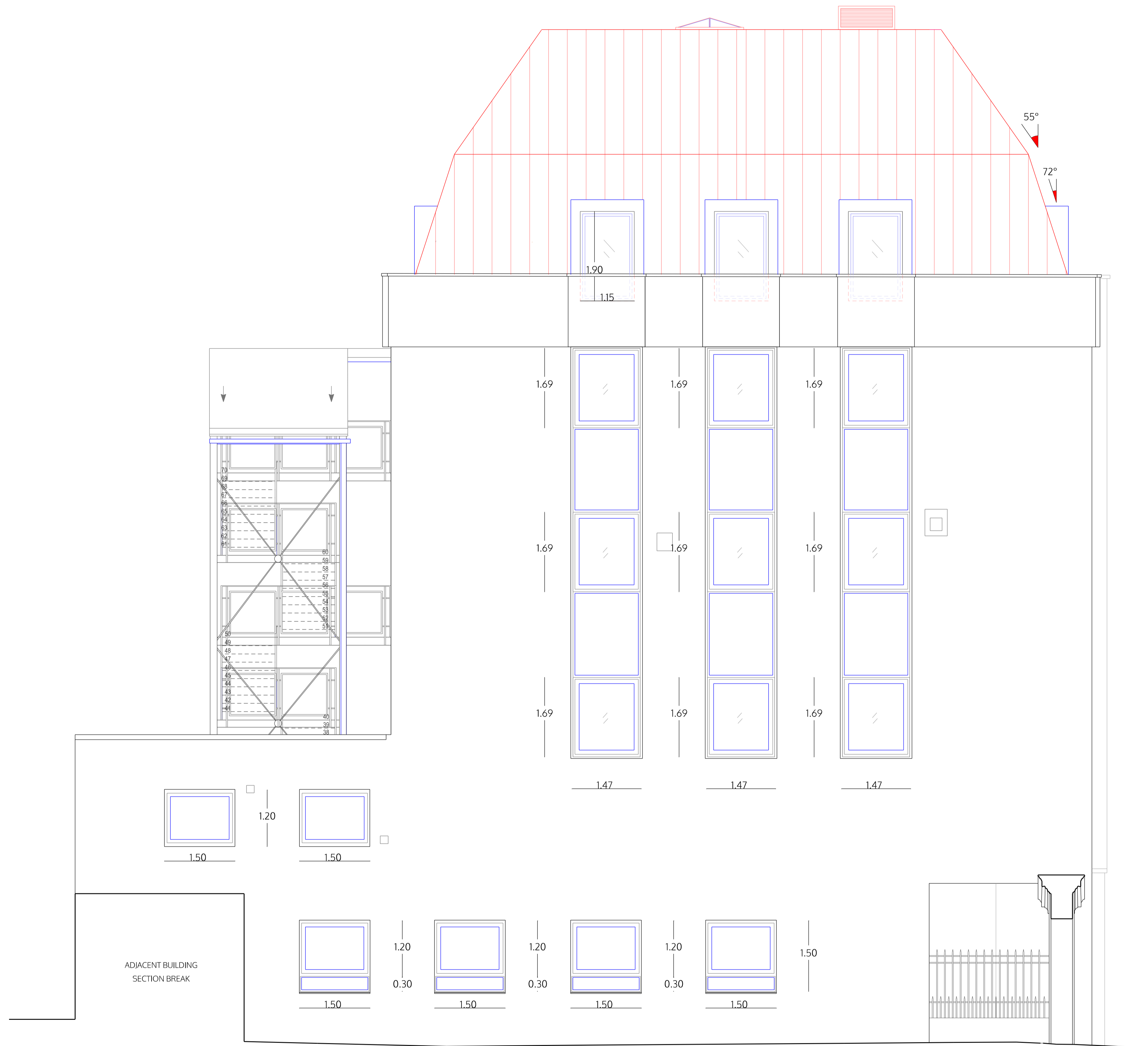
Planning only

1:100 @A3
 1:50 @A1

28.05.2025

I.lezzi

SHE_P08b16



NORTH ELEVATION

no. drawn date scale status title client project © ALL COPYRIGHTS RESERVED m 0 1 2 3 4 5 ALL DIMENSIONS TO BE CHECKED ON SITE

spaceAgent

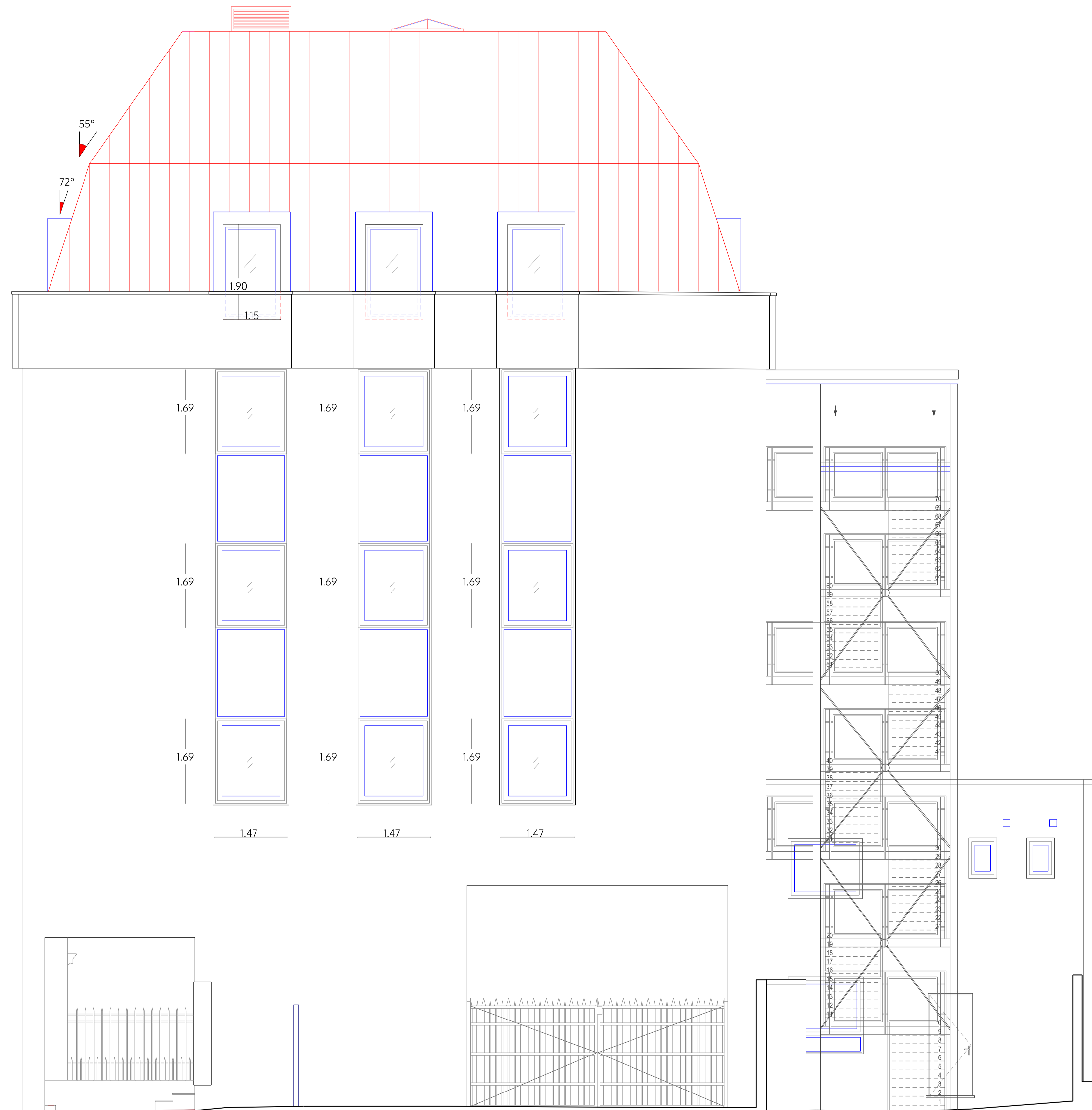
Architects and Designers mail@spaceagent.com
 London-Heidelberg-Barcelona-Brussels spaceagent.com
 spaceAgent Architects Ltd is a RIBA Chartered Practice

Conversion to residential
 227 Shepherds Bush Road
 London W6 7AS

227 SBR LTD
 London

North elevation
 as proposed
 rev. B = (Upward extension) Class AA

Planning only	
	1:100 @A3 1:50 @A1
	28.05.2025
	I.lezzi
SHE_P09b16	



SOUTH ELEVATION

no. drawn date scale status title client project © ALL COPYRIGHTS RESERVED m 0 1 2 3 4 5 ALL DIMENSIONS TO BE CHECKED ON SITE

spaceAgent

Architects and Designers mail@spaceagent.com
 London-Heidelberg-Barcelona-Brussels spaceagent.com
 spaceAgent Architects Ltd is a RIBA Chartered Practice

Conversion to residential
 227 Shepherds Bush Road
 London W6 7AS

227 SBR LTD
 London

South elevation
 as proposed
 rev. B = (Upward extension) Class AA

Planning only






1:100 @A3
 1:50 @A1

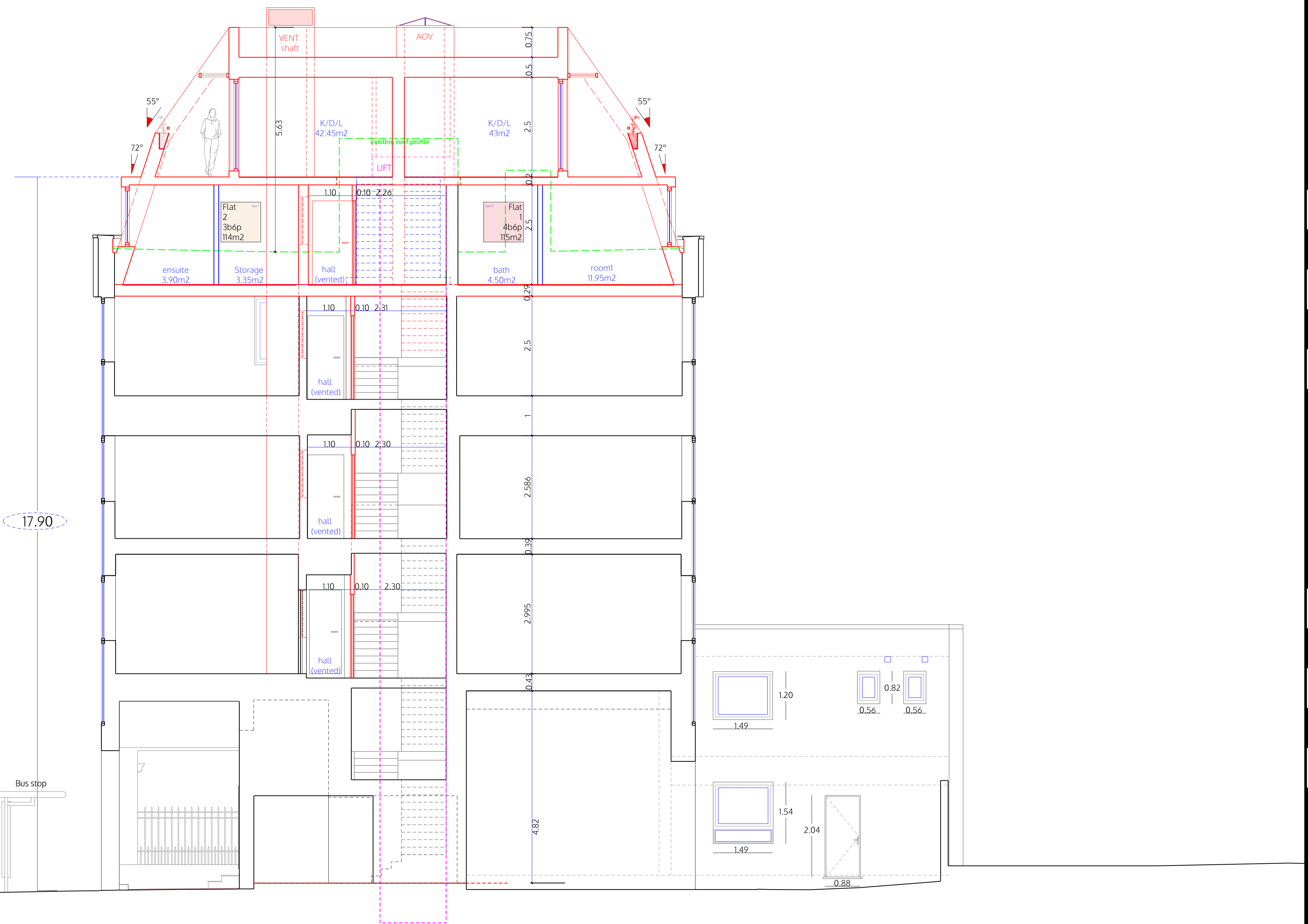
28.05.2025

I.lezzi

SHE_P10b16

LEGEND

-  Existing
-  Demolition
-  Partitions between flats
-  Fire rated and sound proofing
-  Internal partitions



SECTION B-B

no. drawn date scale status title client project © ALL COPYRIGHTS RESERVED m 0 1 2 3 4 5 ALL DIMENSIONS TO BE CHECKED ON SITE

spaceAgent

Architects and Designers mail@spaceagent.com
 London-Heidelberg-Barcelona-Brussels spaceagent.com
 spaceAgent Architects Ltd is a RIBA Chartered Practice

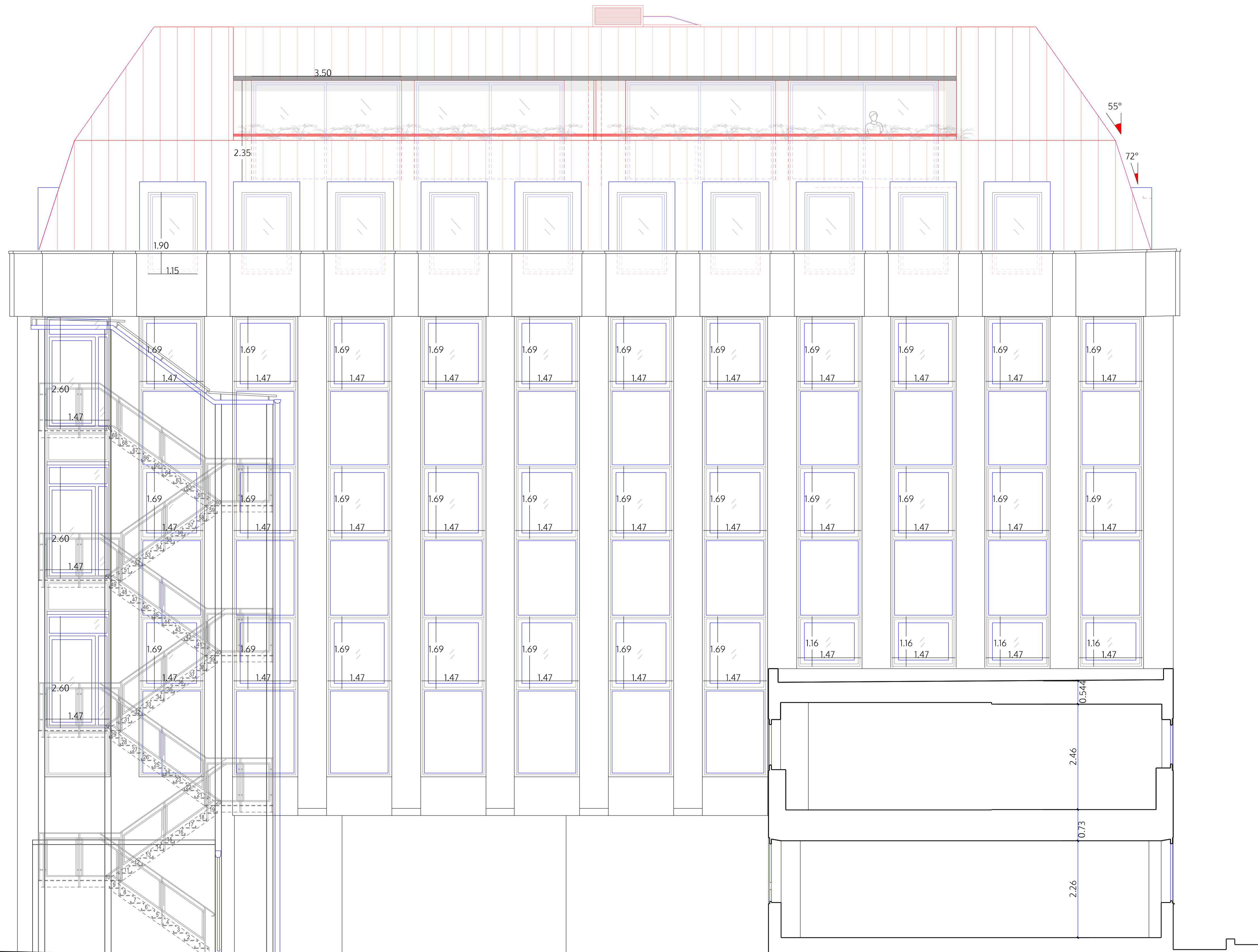
Conversion to residential
 227 Shepperds Bush Road
 London W6 7AS

227 SBR LTD
 London

Section B-B
 as proposed
 rev. B = (Upward extension) Class AA

Planning only	
1:100 @A3	
1:50 @A1	
28.05.2025	
I.lezzi	

SHE_P11b16



BACK ELEVATION (EAST)

no. drawn date scale status title client project © ALL COPYRIGHTS RESERVED m 0 1 2 3 4 5 ALL DIMENSIONS TO BE CHECKED ON SITE

spaceAgent

Architects and Designers mail@spaceagent.com
 London-Heidelberg-Barcelona-Brussels spaceagent.com
 spaceAgent Architects Ltd is a RIBA Chartered Practice

Conversion to residential
 227 Shepherds Bush Road
 London W6 7AS

227 SBR LTD
 London

Back elevation (East)
 as proposed
 rev. B = (Upward extension) Class AA

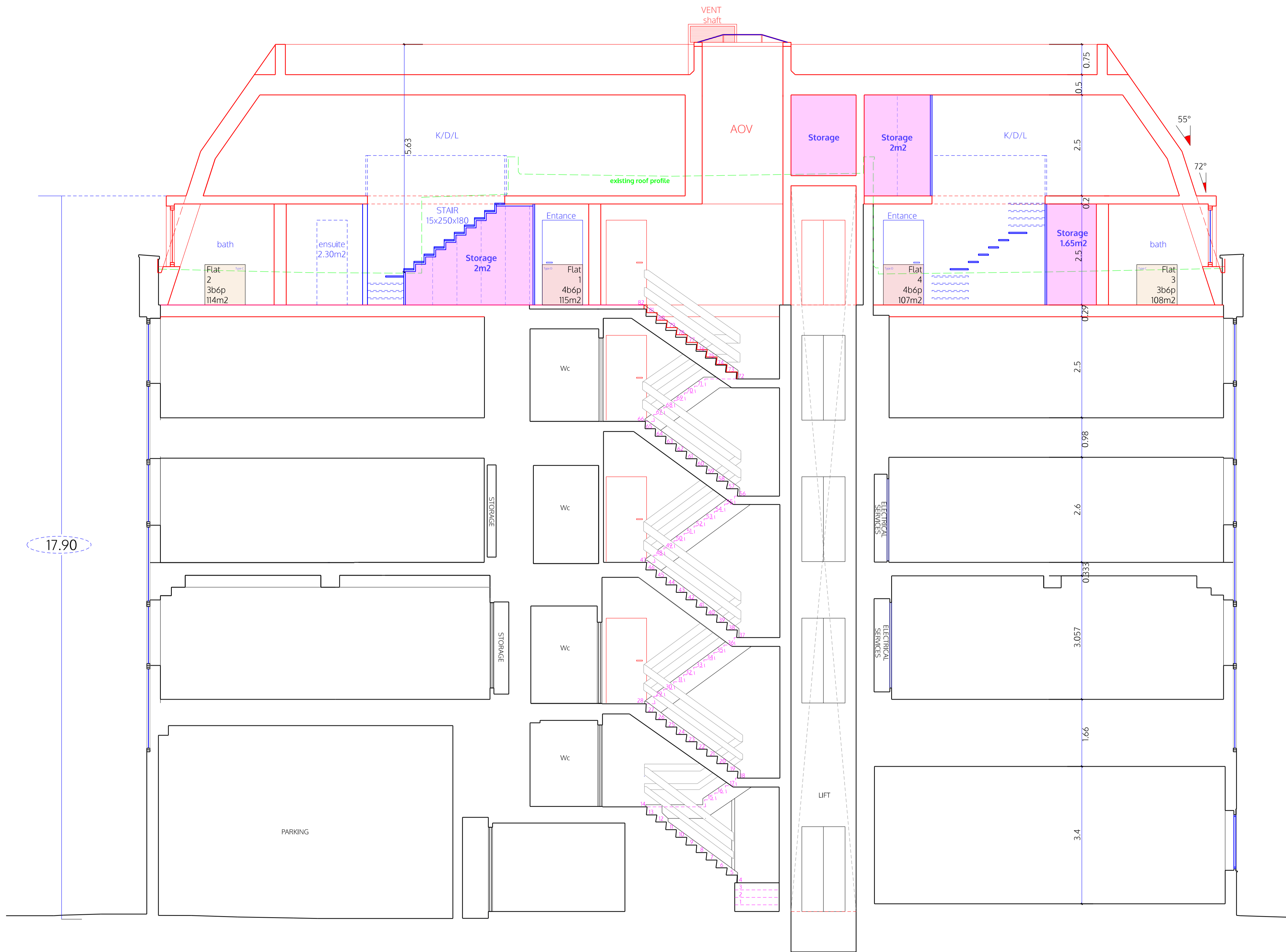
Planning only

1:100 @A3
 1:50 @A1

28.05.2025

I.lezzi

SHE_P12b16



SECTION A-A

LEGEND

- Existing
- Demolition
- Partitions between flats
- Fire rated and sound proofing
- Internal partitions

no. drawn date scale status title client project © ALL COPYRIGHTS RESERVED m 0 1 2 3 4 5 ALL DIMENSIONS TO BE CHECKED ON SITE

spaceAgent

Architects and Designers mail@spaceagent.com
 London-Heidelberg-Barcelona-Brussels spaceagent.com
 spaceAgent Architects Ltd is a RIBA Chartered Practice

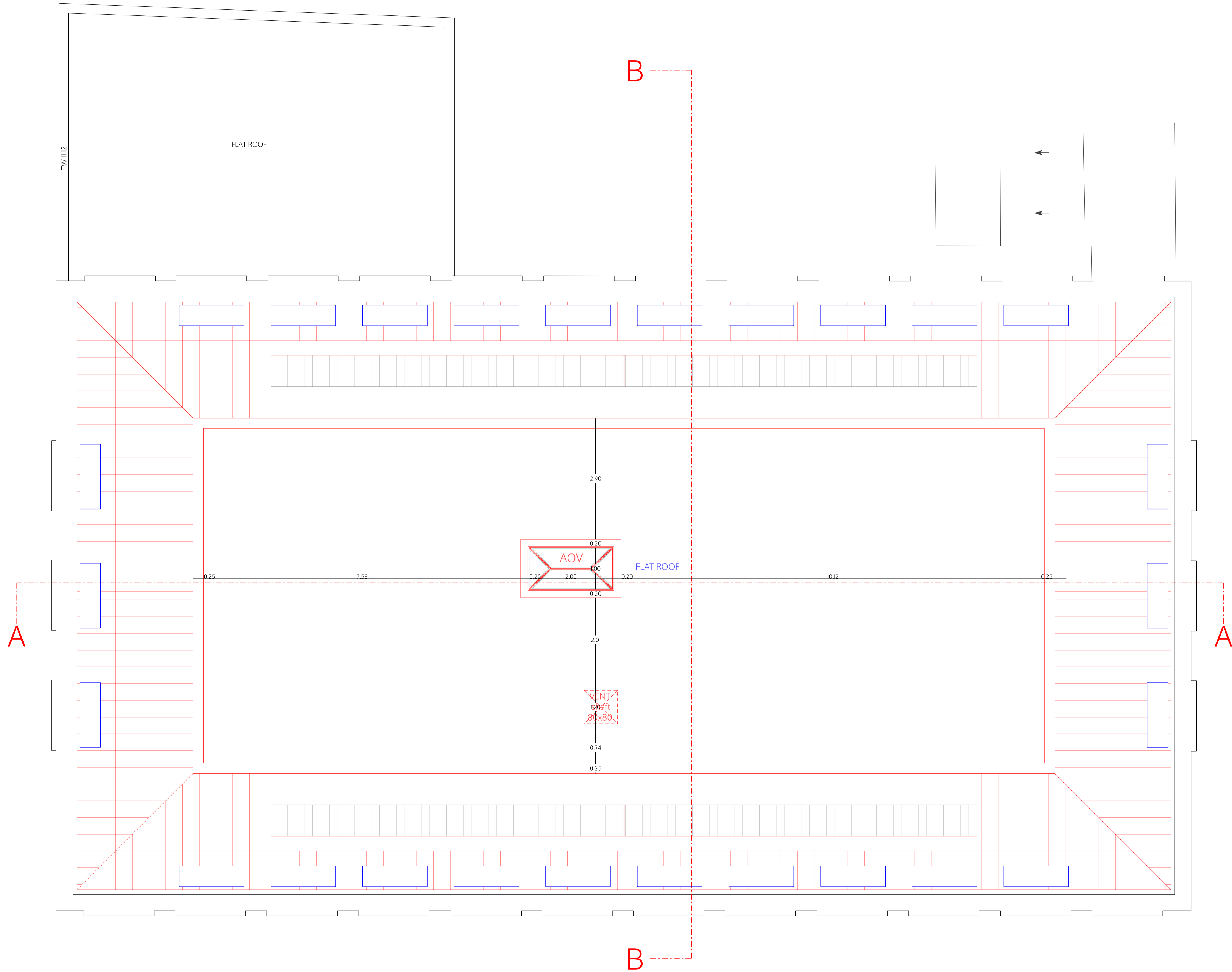
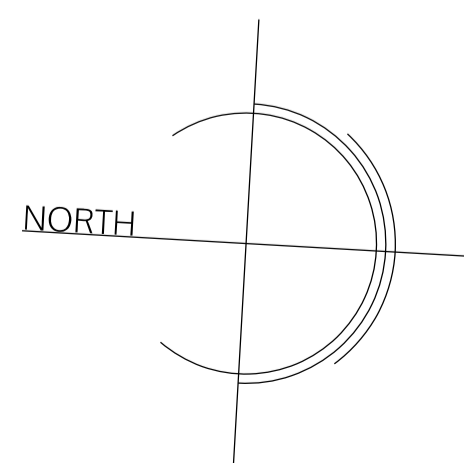
Conversion to residential
 227 Shepherds Bush Road
 London W6 7AS

227 SBR LTD
 London

Section A-A
 as proposed
 rev. B = (Upward extension) Class AA






Planning only	
	1:100 @A3 1:50 @A1
	28.05.2025
	I.lezzi

SHE_P13b16



ROOF

LEGEND

-  Existing
-  Demolition
-  Partitions between flats
-  Fire rated and sound proofing
-  Internal partitions

no. drawn date scale status title client project © ALL COPYRIGHTS RESERVED m 0 1 2 3 4 5 ALL DIMENSIONS TO BE CHECKED ON SITE

spaceAgent

Architects and Designers mail@spaceagent.com
 London-Heidelberg-Barcelona-Brussels spaceagent.com
 spaceAgent Architects Ltd is a RIBA Chartered Practice

Conversion to residential
 227 Shepherds Bush Road
 London W6 7AS

227 SBR LTD
 London

Roof plan
 as proposed
 rev. B = (Upward extension) Class AA

Planning only

1:100 @A3

1:50 @A1

28.05.2025

I.lezzi

SHE_P14b16