

±0.00 FFL on GF = +4.64 m AMSL
 All dimensions are structural!
 All internal levels (sill, ceilings, beams) are measured from FFL. This drawing is to be viewed together with all consultant documentation (structural engineer, M&E, fire safety strategy, supplier, etc.). Any discrepancies shown are to be notified to the design team immediately.

Legend plan

FFL finished floor level
 SFL structural floor level
 FCL finished ceiling level
 SCL structural ceiling level

Walls

Notes:
 all flanking surfaces to break to stop sound transmissions
 moisture resistant construction in bathrooms/kitchens
 internal fire spread - no Class 3 walls and ceilings finishes
 roof fire spread - min Class B
 external wall fire spread - A2-s1, d0 or better

existing structure retained - concrete/blockwork
 F120 - main stair enclosure - block/drywall
 F60 - party walls/floors - drywall/block/concrete
 F30 - protective partitions - drywall
 Partitions - drywall
 Pre-wall shell - drywall
 Moisture resistant construction

FD60S 60min fire door (smoke seal/self-closer)
 FD30S 30min fire door (smoke seal/self-closer)
 FD30 30min fire door

S Smoke detector
 H Heat detector
 B Fire alarm sounder/bell
 E Emergency lighting
 ES Escape signage
 WS Wayfinding signage
 SP Sprinkler area (AWR/SS Category 2)
 DRM Dry rising mains
 ERZ Escape route exclusion zone
 AFD Automatic fire detection system (LDI in each flat)
 FACP Fire alarm control panel
 PVES PV emergency switch
 EVC Emergency voice communication

acD absorption Class C or D in common parts

W Water supply
 SVP Soil Vent Pipe
 RVP Rain Water downpipe
 Drain Main Drainage run (2pc fall)
 MH Manhole

MV Mechanical vent
 MSVS Mechanical smoke ventilation system
 AOVI Automatic opening smoke vent (MSVS)
 AOZV Automatic opening smoke vent (access hatch)
 AC Air condition unit x

TC Telecoms supply
 EL Electric supply
 CU Consumer Unit
 Gas Gas supply

Wall types (with British-Gypsum code)

1A 250mm Partywall 60dB/F60 - A216013 (EN)
 1C 225mm Partywall 53dB/F60 - L216017F (EN)
 1D 200mm Partywall 55dB/F60 - A216014 (EN)

2B 173mm Liftshaft 52dB/F60 - A306020 (A) (EN)

3A 170mm Stairwall 53dB/F120 - rendered blockwork
 3B 200mm Stairwall 55dB/F120 - X216011 (EN)
 3C 100mm Stairwall /F120 - A206067A (EN)

4A 130mm Commonpart 53dB/F60 - A306020 (A) (EN)
 4B see 1D
 4C 102mm Riserwall /F60 - A206078 (EN)

5A 97mm Partition 40dB/F30 - A206045 (EN)
 5B 80mm Partition 40dB/F30 - A206034 (EN)
 5C 65mm Pre-shell
 5D 132mm Partition (talU) - A206016 (B) (EN)

6C 60mm External wall lining 0.3Uv - i.e. Celotex
 6D 48mm External wall lining 0.5Uv - i.e. Thermaline
 6E 280mm External wall 0.18Uv - i.e. FrameTherm

DETAIL I - conversion

spaceAgent

Architects and Designers
 London-Helidelberg-Barcelona-Brussels
 www.spaceagent.com
 mail@spaceagent.com

Conversion to residential
 227 Shepherds Bush Road
 London W6 7AS

227 SBR LTD
 30 St Johns Road
 Woking GU21 7SA

DETAIL I - conversion

DRAFT GA

1:20 @A3
 1:10 @A1

I.lezzi

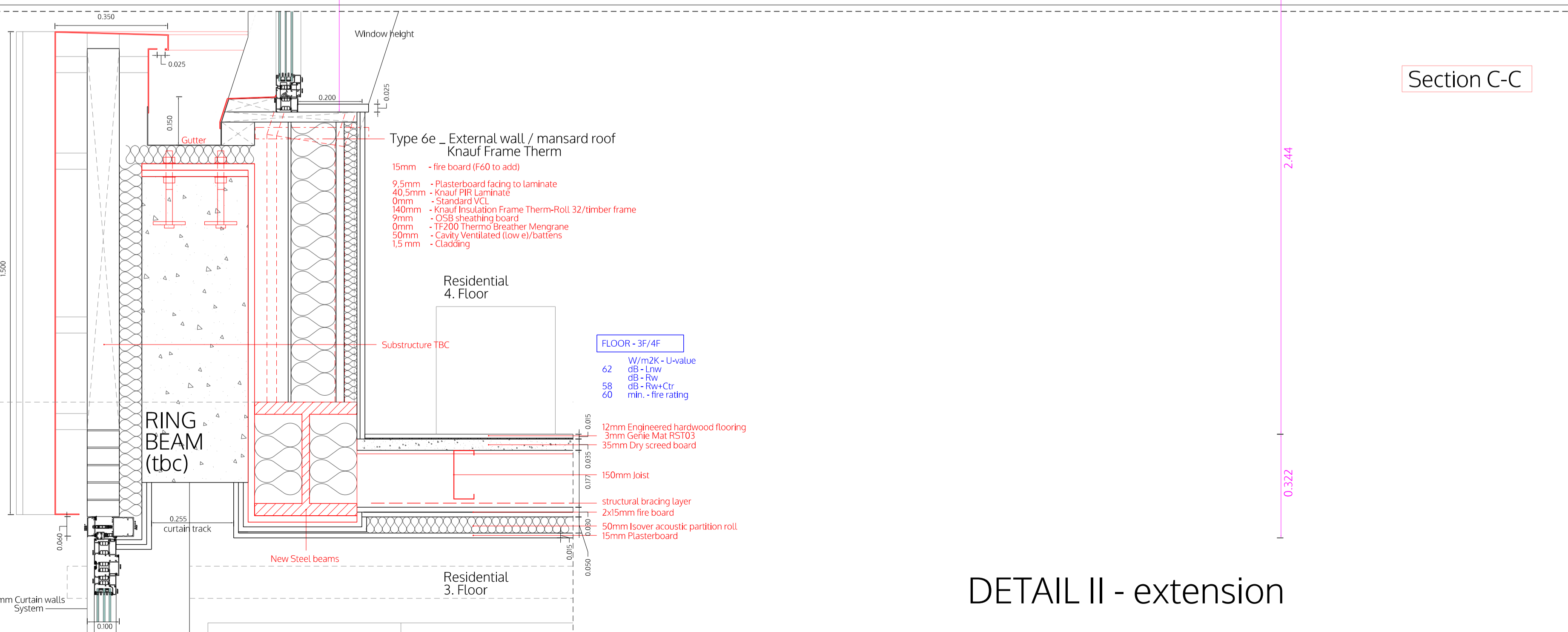
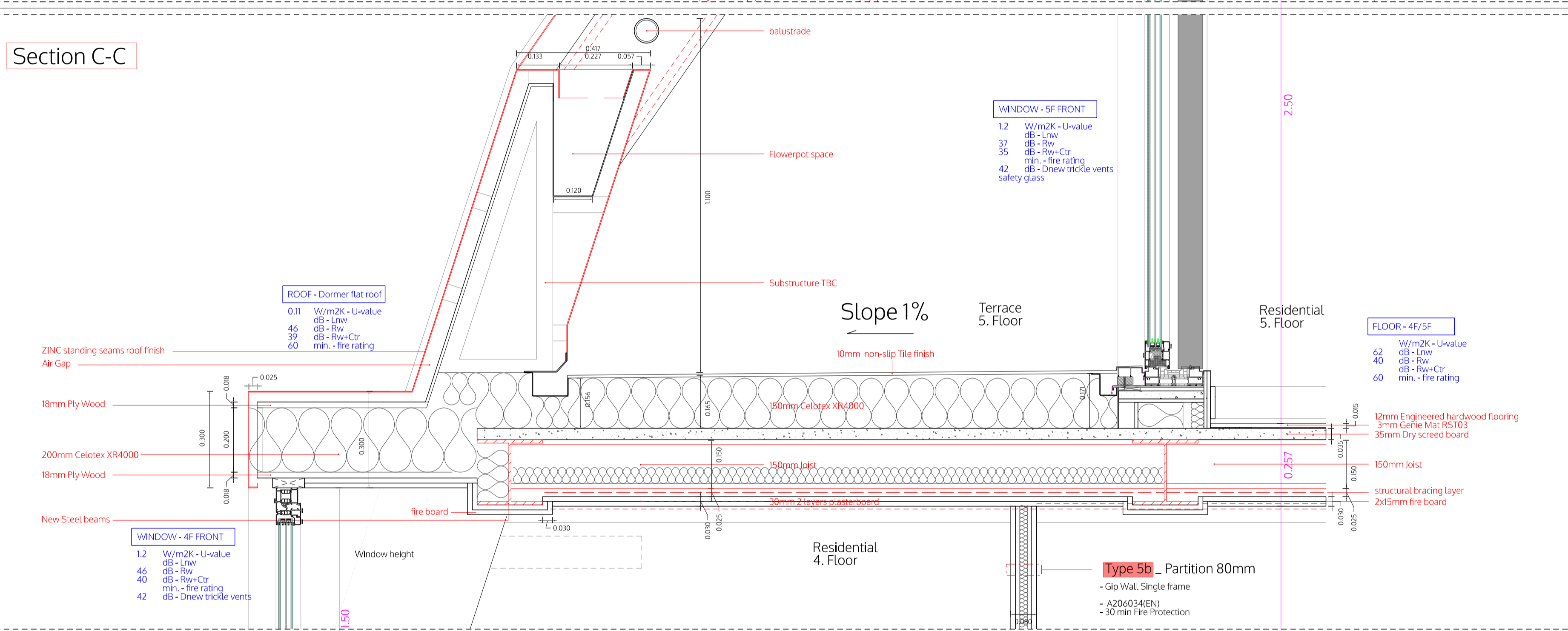
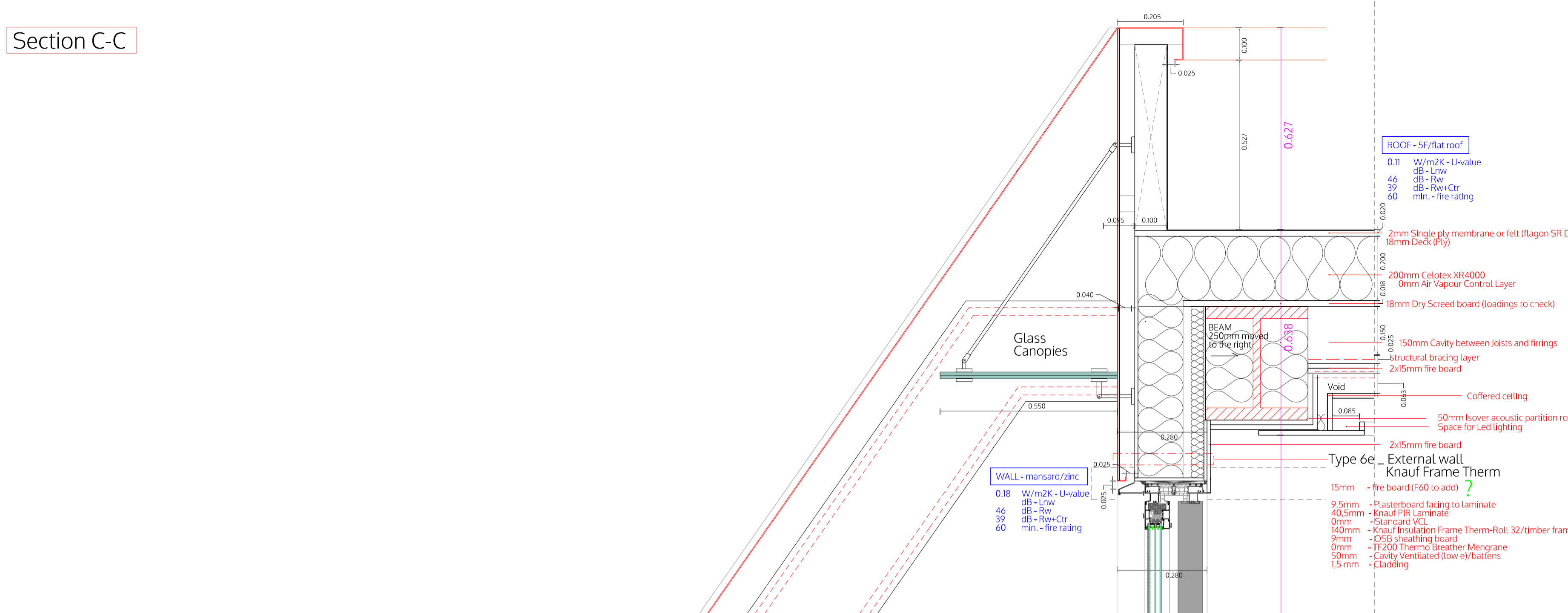
16.02.2026

SHE_P16f14d

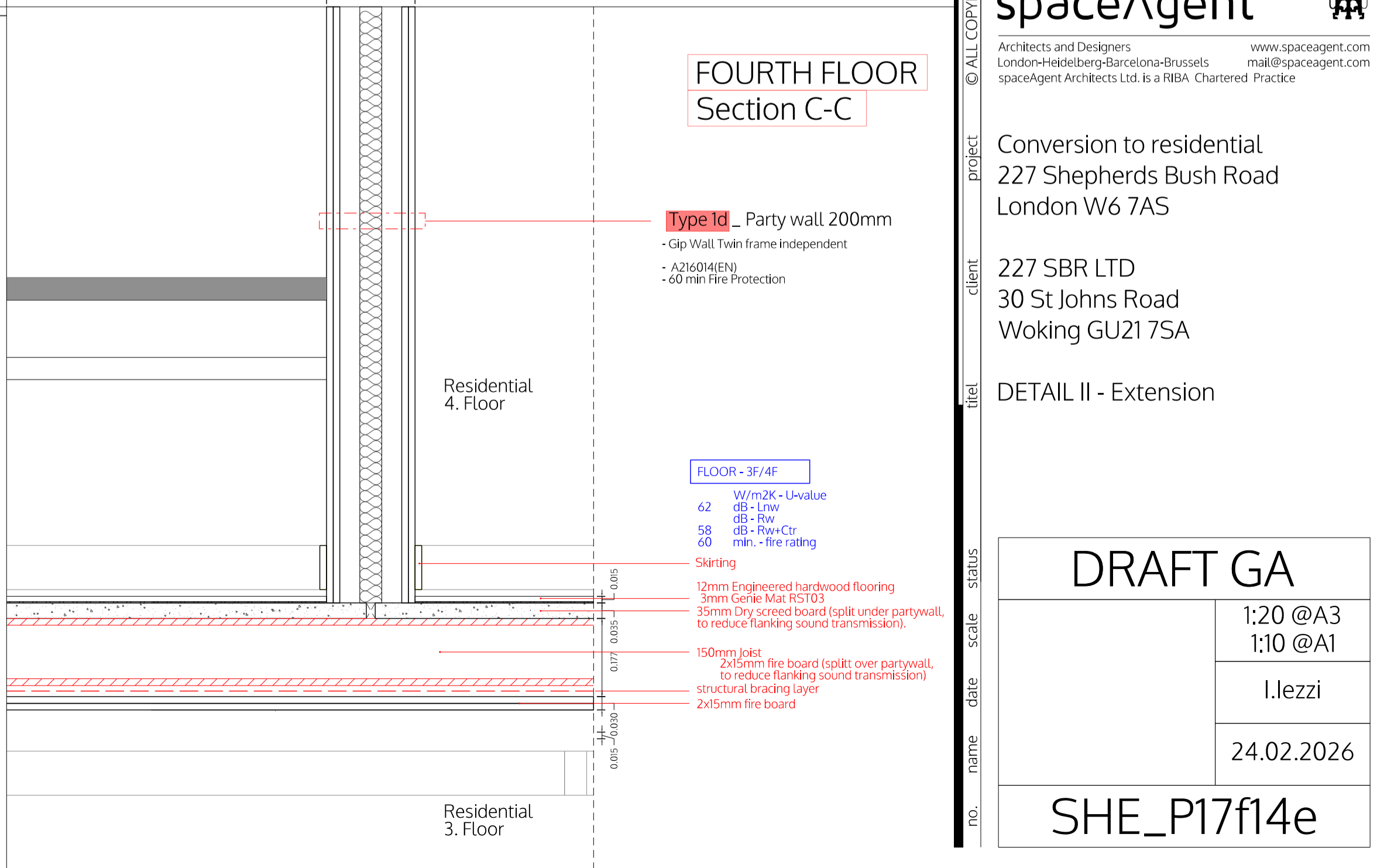
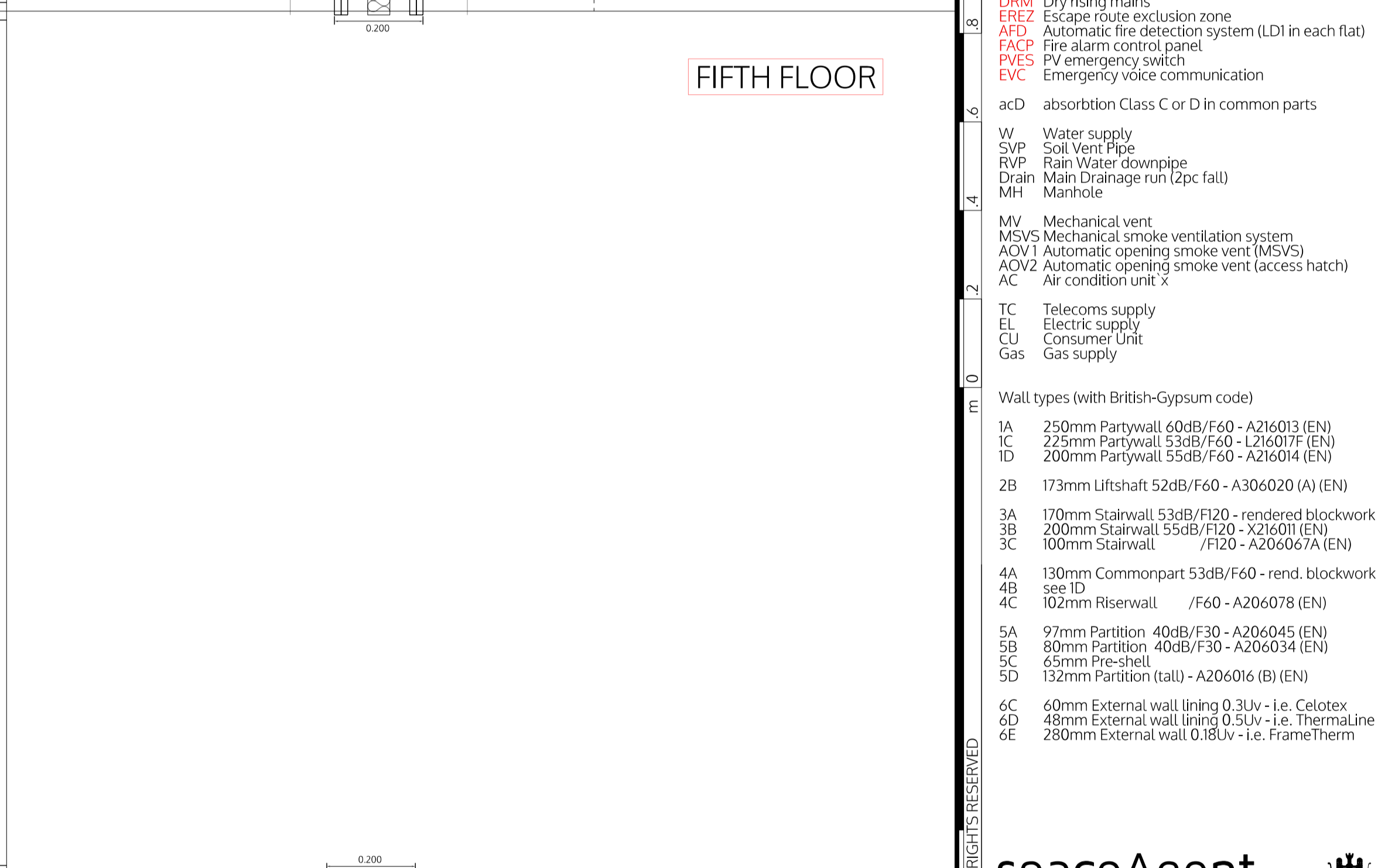
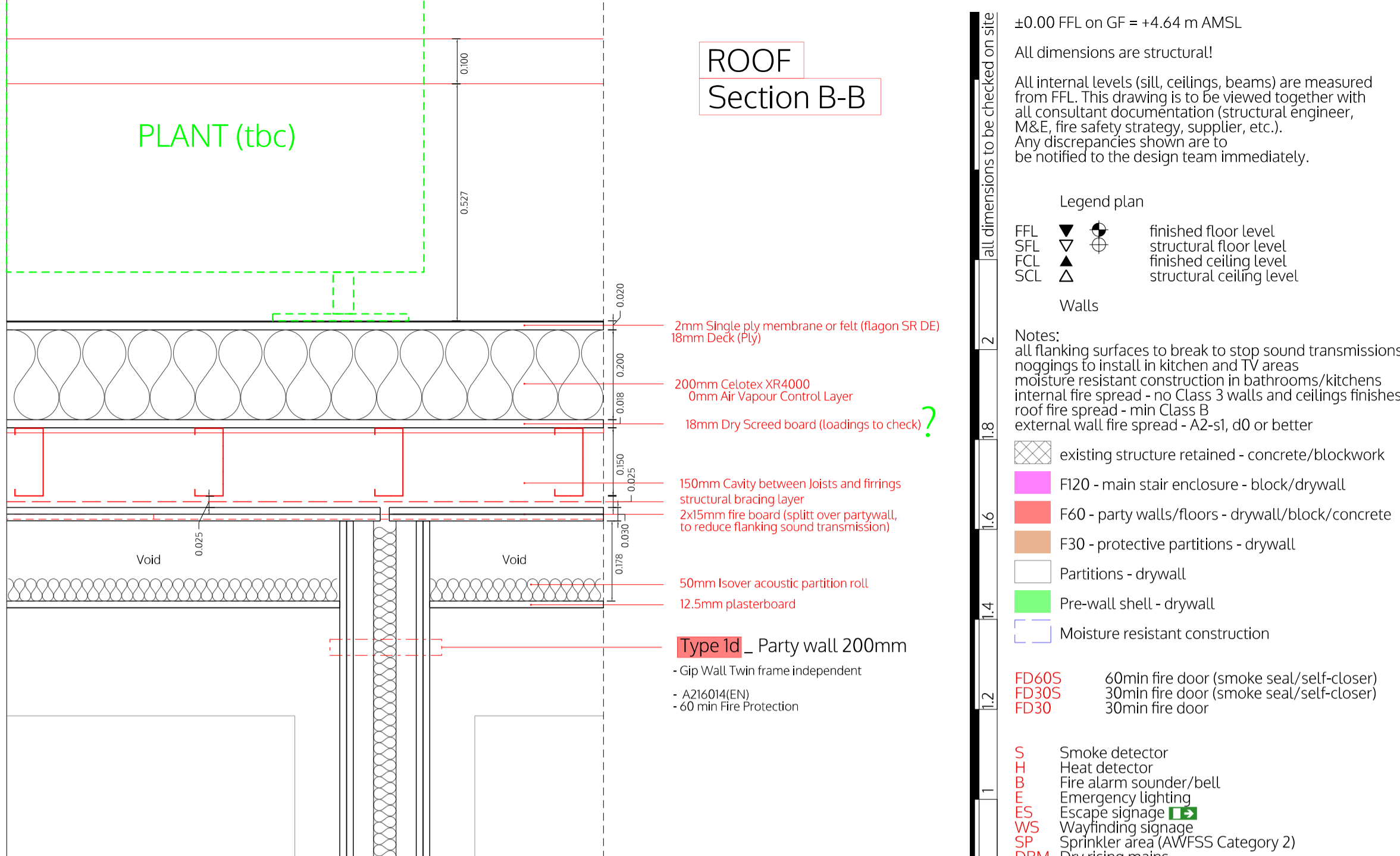
Section C-C

Section C-C

Section C-C



DETAIL II - extension



ROOF Section B-B

FIFTH FLOOR

FOURTH FLOOR Section C-C

+0.00 FFL on GF = +4.64 m AMSL

All dimensions are structural!
All internal levels (sill, ceilings, beams) are measured from FFL. This drawing is to be viewed together with all consultant documentation (structural engineer, M&E, fire safety strategy, supplier, etc.). Any discrepancies shown are to be notified to the design team immediately.

Legend plan
FFL finished floor level
SFL structural floor level
FCL finished ceiling level
SCL structural ceiling level

Walls
Notes:
all flanking surfaces to break to stop sound transmissions
noggings to install in kitchen and TV areas
moisture resistant construction in bathrooms/kitchens
internal fire spread - no Class 3 walls and ceilings finishes
roof fire spread - min Class B
external wall fire spread - A2-s1, d0 or better

existing structure retained - concrete/blockwork
F120 - main stair enclosure - block/drywall
F60 - party walls/floors - drywall/block/concrete
F30 - protective partitions - drywall
Partitions - drywall
Pre-wall shell - drywall
Moisture resistant construction

FD60S 60min fire door (smoke seal/self-closer)
FD30S 30min fire door (smoke seal/self-closer)
FD30 30min fire door

S Smoke detector
H Heat detector
HA Fire alarm sounder/bell
E Emergency lighting
ES Escape signage
WS Wayfinding signage
SP Sprinkler area (AWR/SS Category 2)
DRM Dry rising mains
EREP Escape route exclusion zone
AFD Automatic fire detection system (LDI in each flat)
FACP Fire alarm control panel
PVES PV emergency switch
EVC Emergency voice communication

acD absorption Class C or D in common parts

W Water supply
SVP Soil Vent Pipe
RVP Rain Water downpipe
Drain Main Drainage run (2pc fall)
MH Manhole

MV Mechanical vent
MSVS Mechanical smoke ventilation system
AOV1 Automatic opening smoke vent (MSVS)
AOV2 Automatic opening smoke vent (access hatch)
AC Air condition unit x

TC Telecoms supply
EL Electric supply
CU Consumer Unit
Gas Gas supply

Wall types (with British-Gypsum code)

1A 250mm Partywall 60dB/F60 - A216013 (EN)
1C 225mm Partywall 53dB/F60 - L216017F (EN)
1D 200mm Partywall 55dB/F60 - A216014 (EN)

2B 173mm Liftshaft 52dB/F60 - A306020 (A) (EN)

3A 170mm Stairwall 53dB/F120 - rendered blockwork
3B 200mm Stairwall 55dB/F120 - X216011 (EN)
3C 100mm Stairwall /F120 - A206067A (EN)

4A 130mm Commonpart 53dB/F60 - rend. blockwork
4B see ID
4C 102mm Riserwall /F60 - A206078 (EN)

5A 97mm Partition 40dB/F30 - A206045 (EN)
5B 80mm Partition 40dB/F30 - A206034 (EN)
5C 65mm Pre-shell
5D 132mm Partition (tall) - A206016 (B) (EN)

6C 60mm External wall lining 0.3Uv - i.e. Celotex
6D 48mm External wall lining 0.5Uv - i.e. Thermaline
6E 280mm External wall 0.18Uv - i.e. FrameTherm

spaceAgent
Architects and Designers
London-Helidelberg-Barcelona-Brussels
spaceAgent Architects Ltd. is a RIBA Chartered Practice

Conversion to residential
227 Shepherds Bush Road
London W6 7AS

227 SBR LTD
30 St Johns Road
Woking GU21 7SA

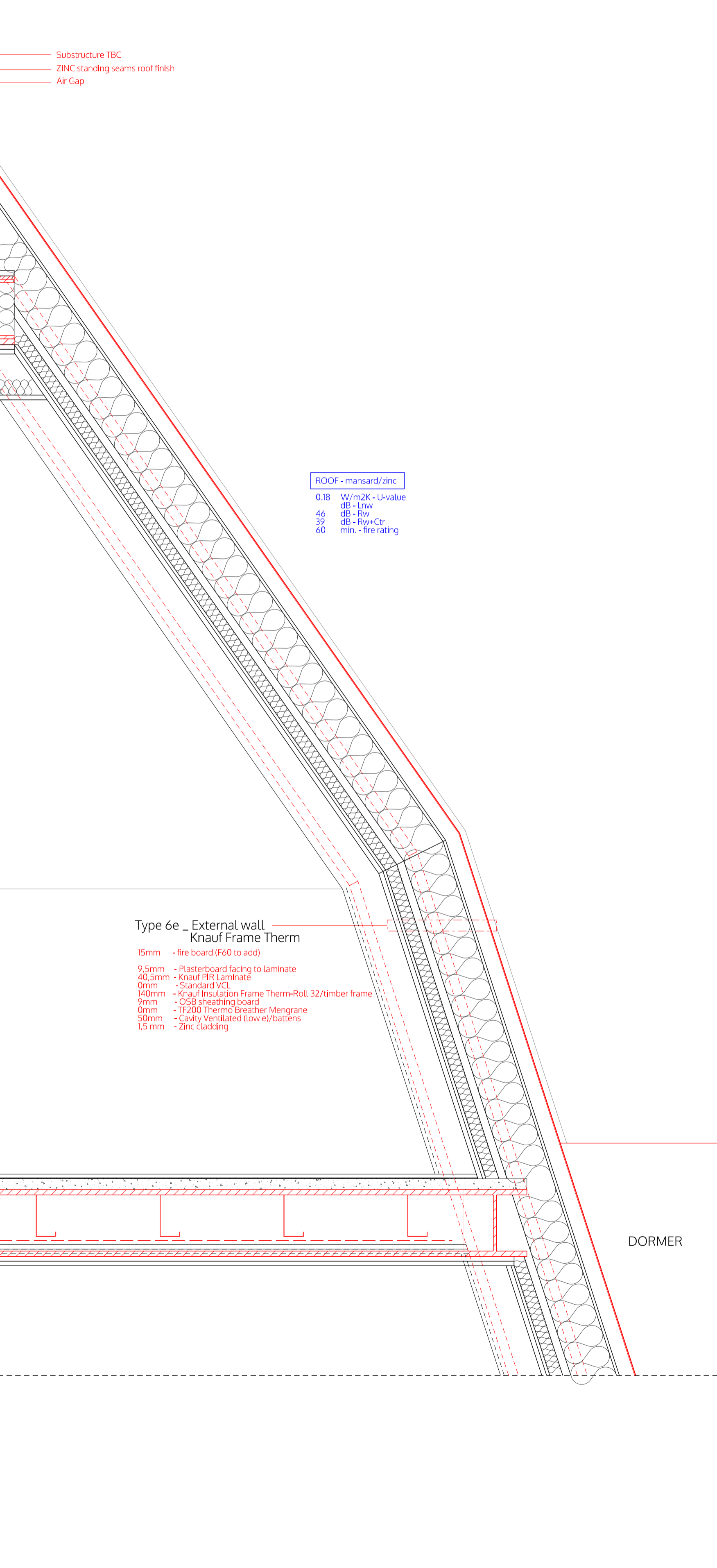
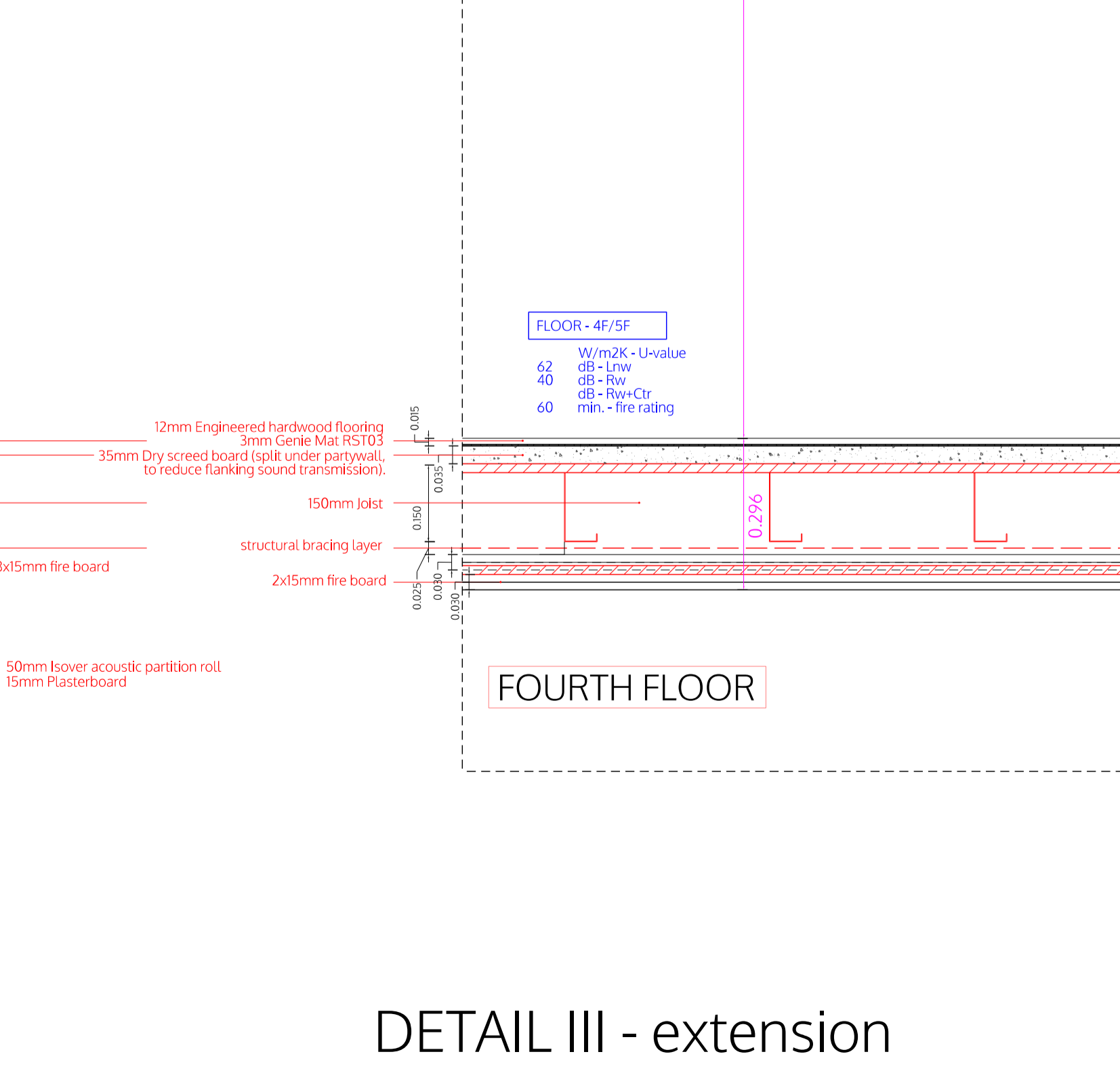
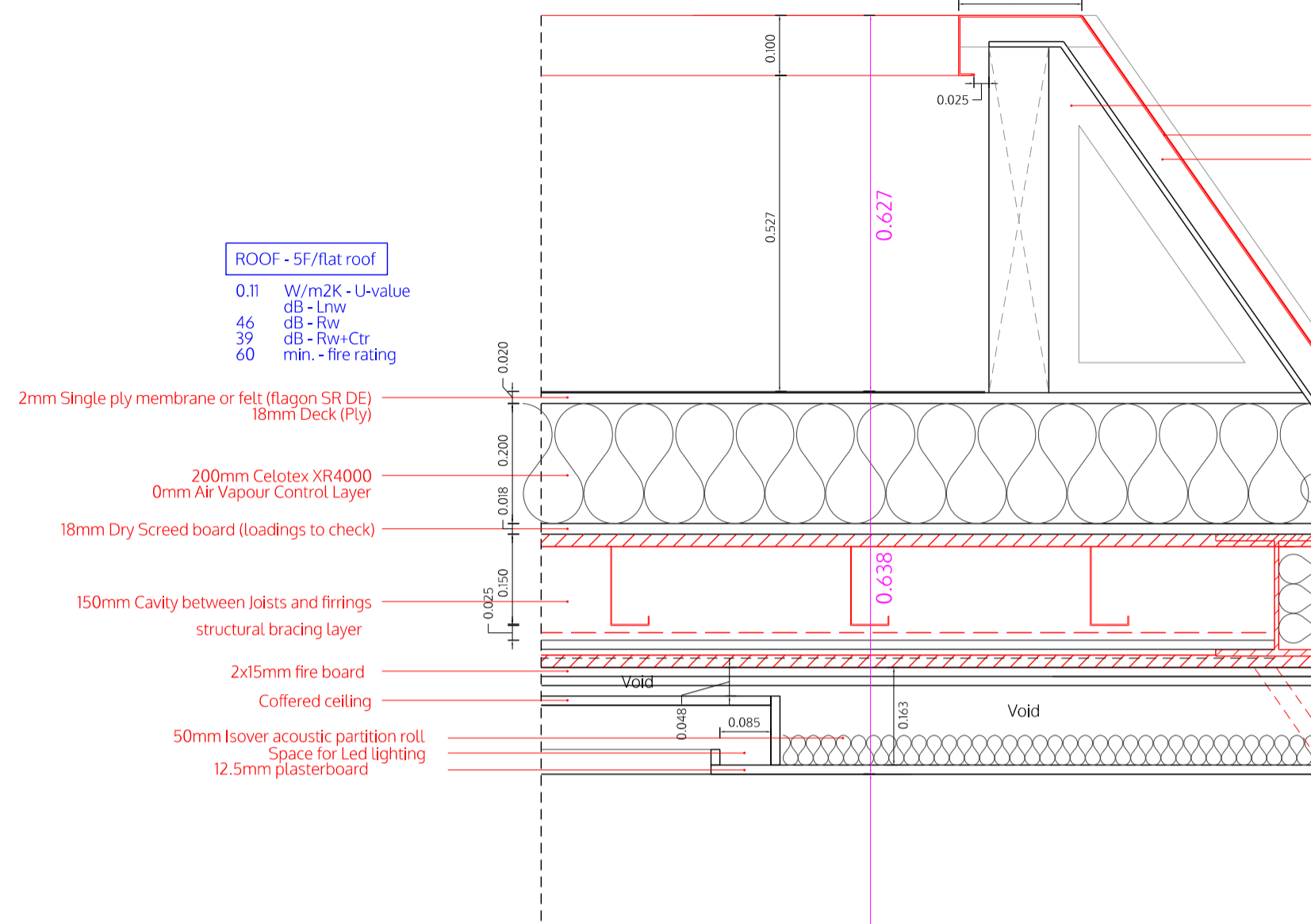
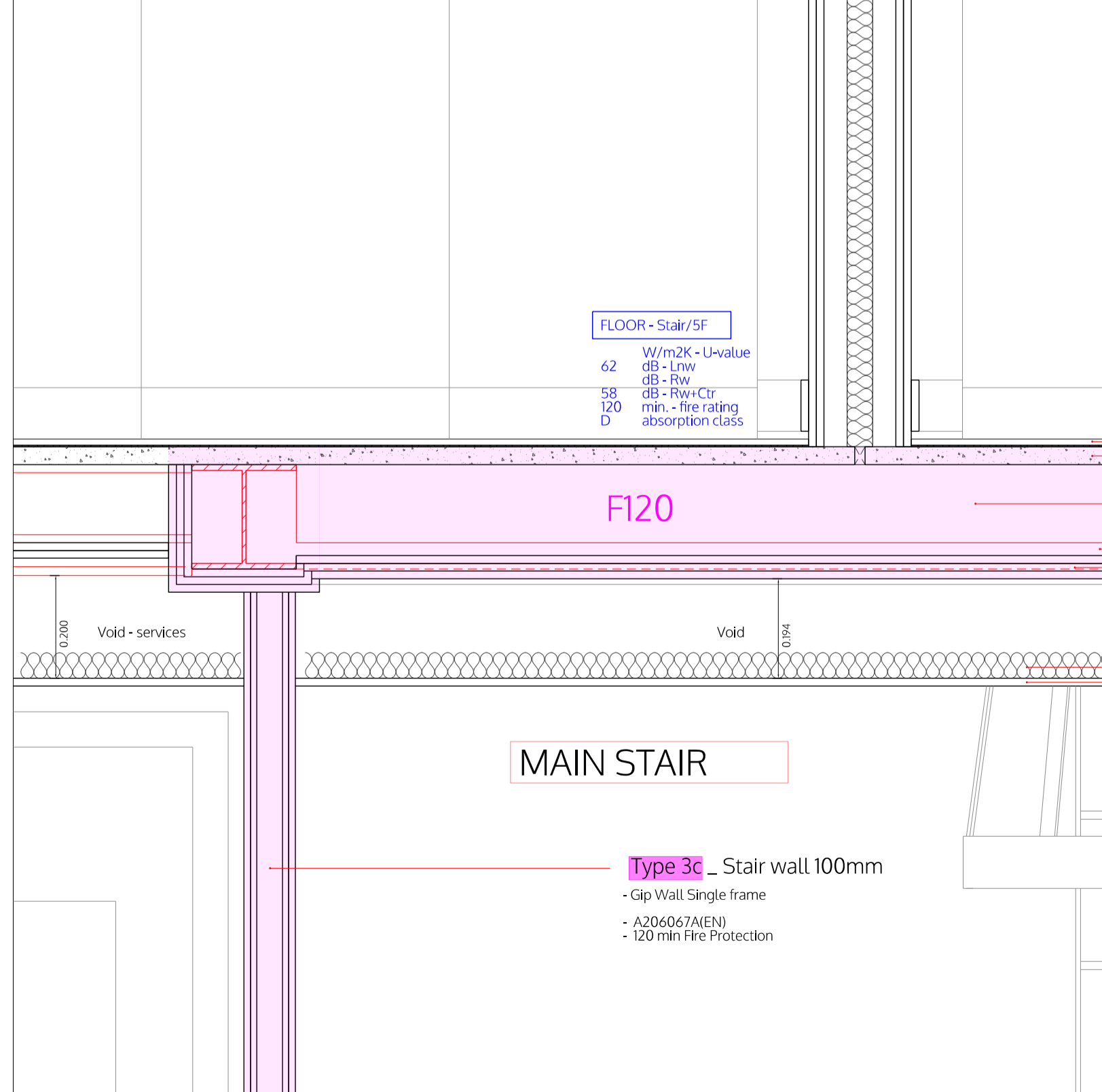
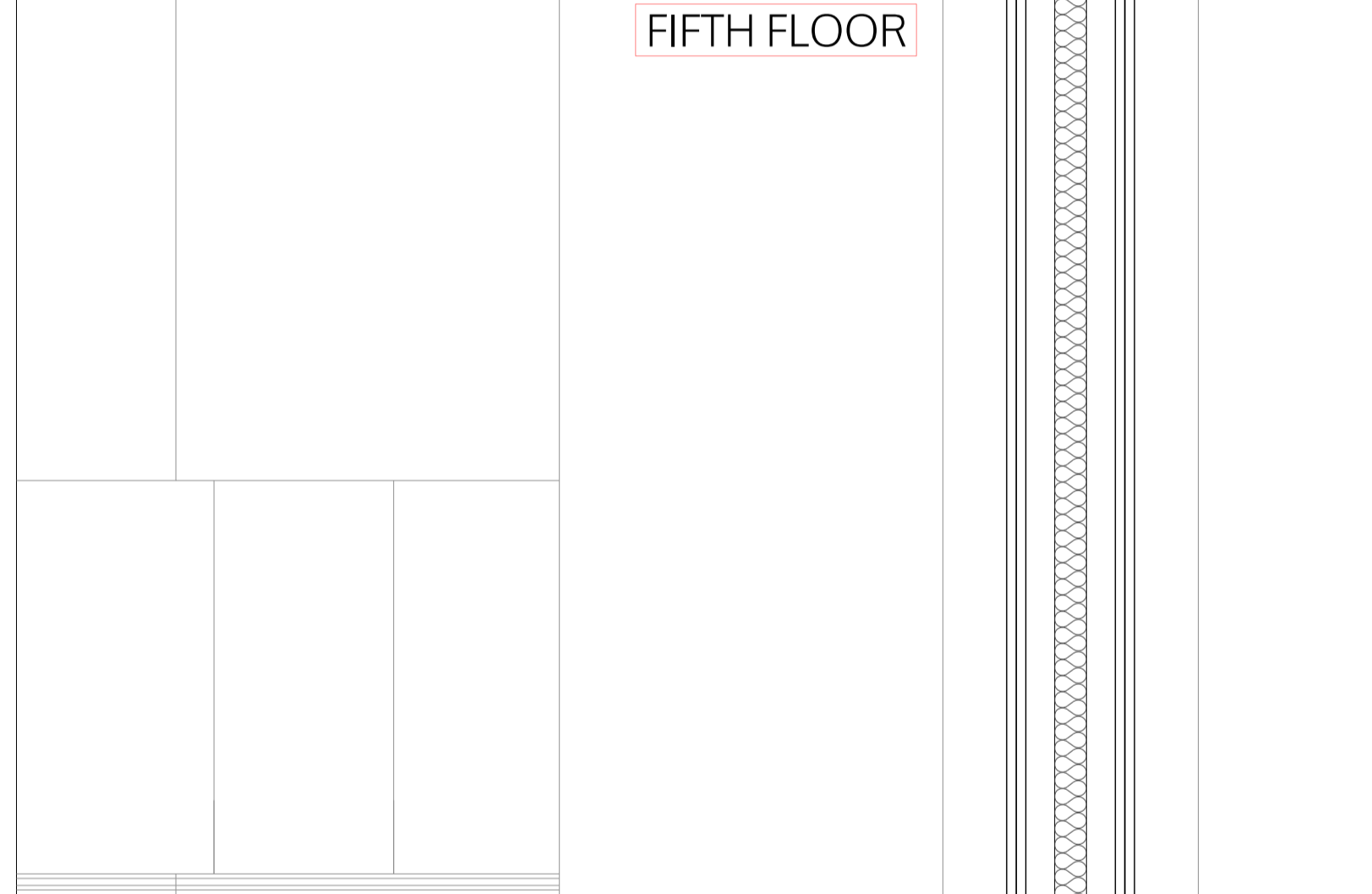
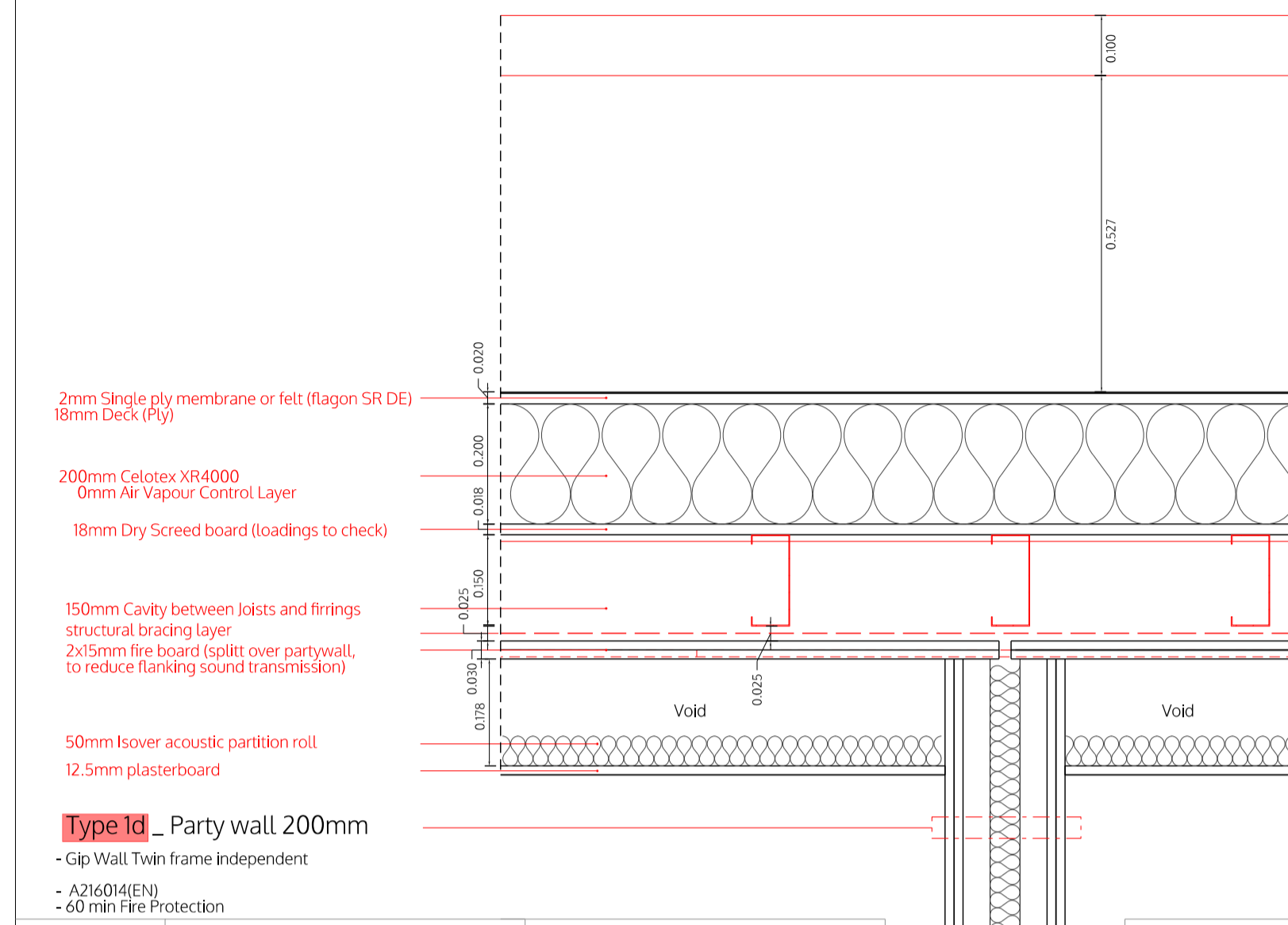
DETAIL II - Extension

DRAFT GA	
1:20 @A3	1:10 @A1
I.lezzi	
24.02.2026	
SHE_P17f14e	

no. name date scale status sheet client project © ALL COPYRIGHTS RESERVED

ROOF
Section B-B

ROOF
Section C-C



±0.00 FFL on GF = +4.64 m AMSL
All dimensions are structural!
All internal levels (sill, ceilings, beams) are measured from FFL. This drawing is to be viewed together with all consultant documentation (structural engineer, M&E, fire safety strategy, supplier, etc.). Any discrepancies shown are to be notified to the design team immediately.

- Legend plan
- FFL finished floor level
 - SFL structural floor level
 - FCL finished ceiling level
 - SCL structural ceiling level
- Walls
- existing structure retained - concrete/blockwork
 - F120 - main stair enclosure - block/drywall
 - F60 - party walls/floors - drywall/block/concrete
 - F30 - protective partitions - drywall
 - Partitions - drywall
 - Pre-wall shell - drywall
 - Moisture resistant construction

- Notes:
- all flanking surfaces to break to stop sound transmissions
 - moisture resistant construction in bathrooms/kitchens
 - internal fire spread - no Class 3 walls and ceilings finishes
 - roof fire spread - min Class B
 - external wall fire spread - A2-s1, d0 or better
- FD60S 60min fire door (smoke seal/self-closer)
- S Smoke detector
- H Heat detector
- FA Fire alarm sounder/bell
- EL Emergency lighting
- ES Escape signage
- WS Wayfinding signage
- SP Sprinkler area (AWR/SS Category 2)
- DRM Dry rising mains
- EREPZ Escape route exclusion zone
- AFD Automatic fire detection system (LDI in each flat)
- FACP Fire alarm control panel
- PVES PV emergency switch
- EVC Emergency voice communication
- aCd absorption Class C or D in common parts
- W Water supply
- SVP Soil Vent Pipe
- RWP Rain Water downpipe
- Drain Main Drainage run (2pc fall)
- MH Manhole
- MV Mechanical vent
- MSVS Mechanical smoke ventilation system
- AOV1 Automatic opening smoke vent (MSVS)
- AOV2 Automatic opening smoke vent (access hatch)
- AC Air condition unit
- TC Telecoms supply
- EL Electric supply
- CU Consumer Unit
- Gas Gas supply

- Wall types (with British-Gypsum code)
- 1A 250mm Partywall 60dB/F60 - A216013 (EN)
 - 1C 225mm Partywall 53dB/F60 - L216017F (EN)
 - 1D 200mm Partywall 55dB/F60 - A216014 (EN)
 - 2B 173mm Liftshaft 52dB/F60 - A306020 (A) (EN)
 - 3A 170mm Stairwall 53dB/F120 - rendered blockwork
 - 3B 200mm Stairwall 55dB/F120 - X216011 (EN)
 - 3C 100mm Stairwall /F120 - A206067A (EN)
 - 4A 130mm Commonpart 53dB/F60 - rend. blockwork
 - 4B see ID
 - 4C 102mm Riserwall /F60 - A206078 (EN)
 - 5A 97mm Partition 40dB/F30 - A206045 (EN)
 - 5B 80mm Partition 40dB/F30 - A206034 (EN)
 - 5C 65mm Pre-shell
 - 5D 132mm Partition (tall) - A206016 (B) (EN)
 - 6C 60mm External wall lining 0.3Uv - i.e. Celotex
 - 6D 48mm External wall lining 0.5Uv - i.e. ThermoLine
 - 6E 280mm External wall 0.18Uv - i.e. FrameTherm

spaceAgent

Architects and Designers www.spaceagent.com
London-Helidelberg-Barcelona-Brussels mail@spaceagent.com
spaceAgent Architects Ltd. is a RIBA Chartered Practice

Conversion to residential
227 Shepherds Bush Road
London W6 7AS

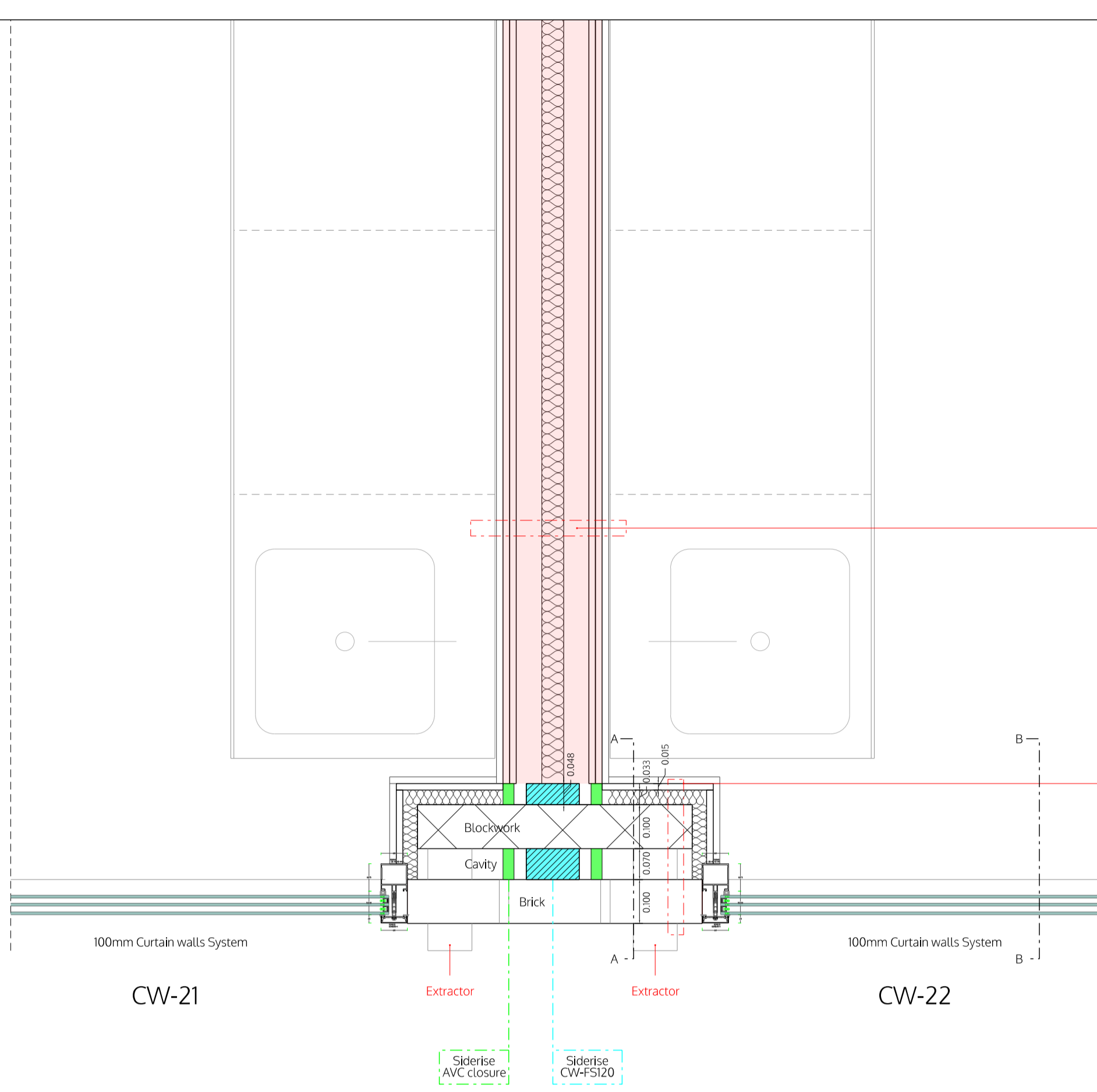
227 SBR LTD
30 St Johns Road
Woking GU21 7SA

DETAIL III - Extension

DRAFT GA	
1:20 @A3	1:10 @A1
I.lezzi	
24.02.2026	
SHE_P18f14d	

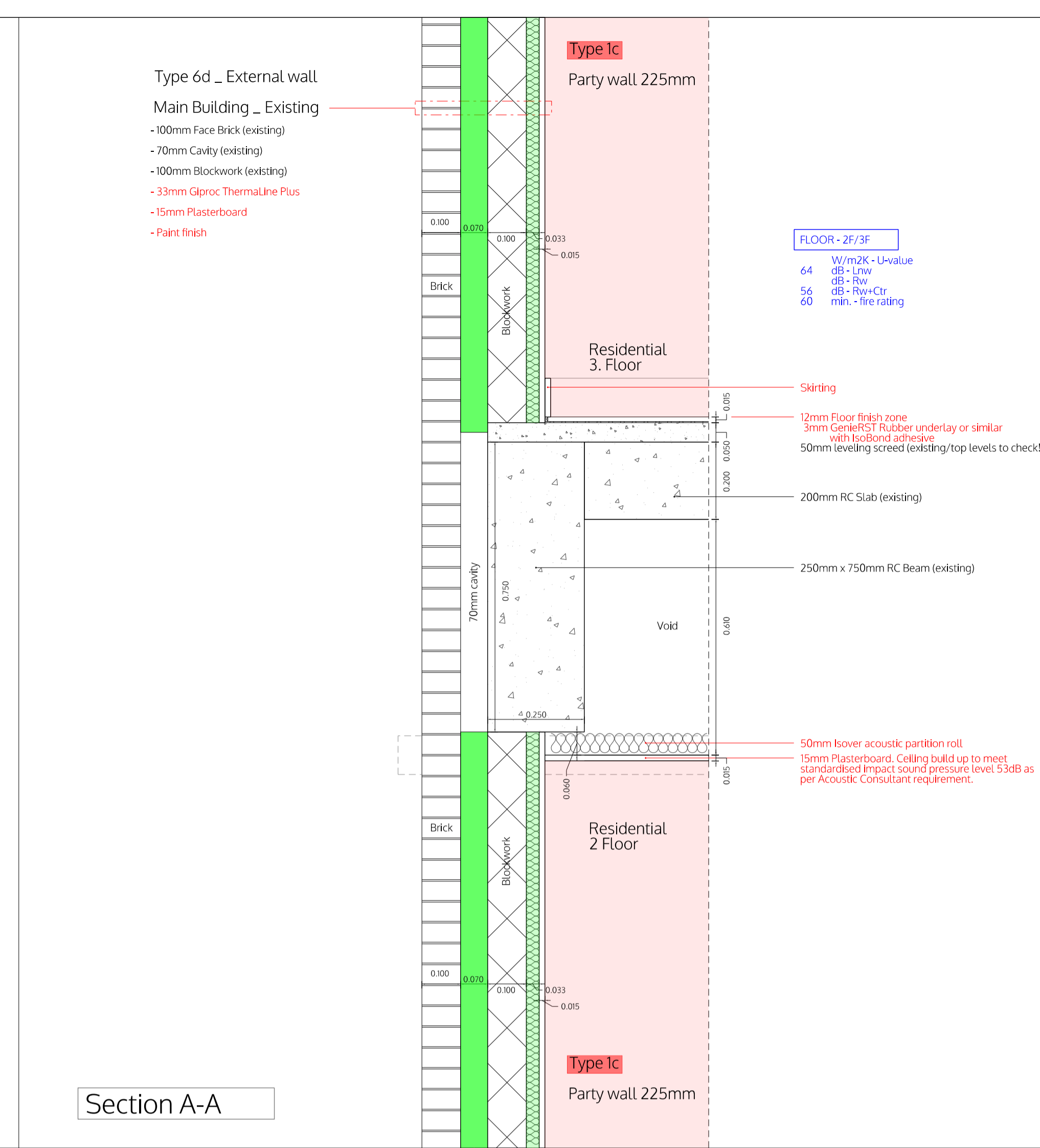
DETAIL III - extension

no. name date scale status sheet client project © ALL COPYRIGHTS RESERVED

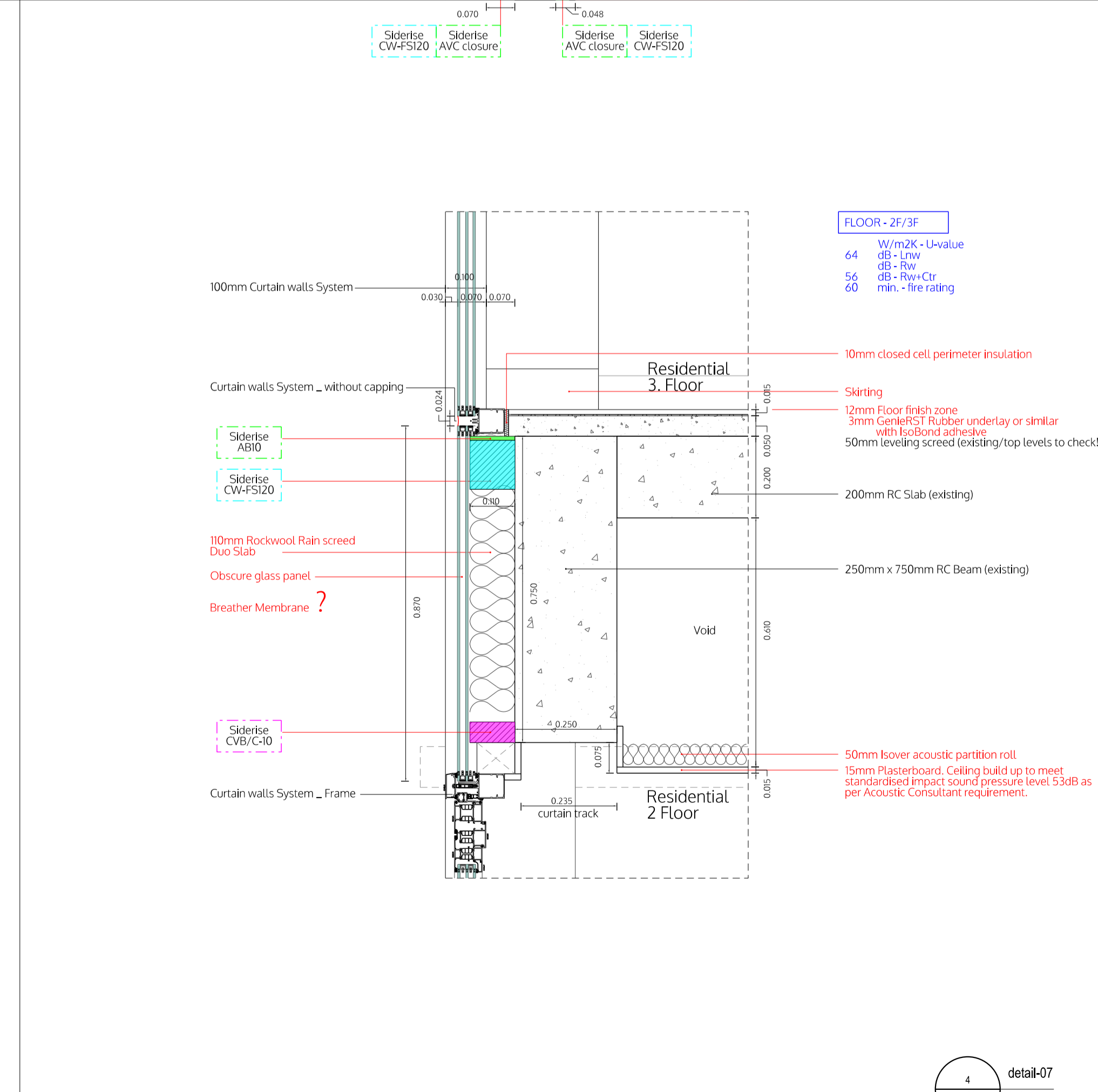


Third floor plan

DETAIL IV -conversion



Section A-A



Section B-B

±0.00 FFL on GF = +4.64 m AMSL

All dimensions are structural!

All internal levels (sill, ceilings, beams) are measured from FFL. This drawing is to be viewed together with all consultant documentation (structural engineer, M&E, fire safety strategy, supplier, etc.). Any discrepancies shown are to be notified to the design team immediately.

Legend plan

FFL finished floor level
SFL structural floor level
FCL finished ceiling level
SCL structural ceiling level

Walls

Notes:

- all flanking surfaces to break to stop sound transmissions noggings to install in kitchen and TV areas
- moisture resistant construction in bathrooms/kitchens
- internal fire spread - no Class 3 walls and ceilings finishes
- roof fire spread - min Class B
- external wall fire spread - A2-s1, d0 or better

existing structure retained - concrete/blockwork

FI20 - main stair enclosure - block/drywall

F60 - party walls/floors - drywall/block/concrete

F30 - protective partitions - drywall

Partitions - drywall

Pre-wall shell - drywall

Moisture resistant construction

FD60S 60min fire door (smoke seal/self-closer)
FD30S 30min fire door (smoke seal/self-closer)
FD30 30min fire door

S Smoke detector
H Heat detector
B Fire alarm sounder/bell
I Emergency lighting
ES Escape signage
WYS Wayfinding signage
SP Sprinkler area (AWFSS Category 2)
DRM Dry rising mains
EREZ Escape route exclusion zone
AFD Automatic fire detection system (LD1 in each flat)
FACP Fire alarm control panel
PVS PV emergency switch
EVC Emergency voice communication

acD absorption Class C or D in common parts

W Water supply
SVP Soil Vent Pipe
RVP Rain Water downpipe
Drain Main Drainage run (2pc fall)
MH Manhole

MV Mechanical vent
MSVS Mechanical smoke ventilation system
AOV1 Automatic opening smoke vent (MSVS)
AOV2 Automatic opening smoke vent (access hatch)
AC Air condition unit x

TC Telecoms supply
EL Electric supply
CU Consumer Unit
Gas Gas supply

Wall types (with British-Gypsum code)

IA	250mm Partywall 60dB/F60 - A216013 (EN)
IC	225mm Partywall 53dB/F60 - L216017(EN)
ID	200mm Partywall 55dB/F60 - A216014 (EN)
2B	173mm Liftshaft 52dB/F60 - A306020 (A) (EN)
3A	170mm Stairwall 53dB/F120 - rendered blockwork
3B	200mm Stairwall 55dB/F120 - X216011 (EN)
3C	100mm Stairwall /F120 - A206067A (EN)
4A	130mm Commonpart 53dB/F60 - rend. blockwork
4B	see 1D
4C	102mm Riserwall /F60 - A206078 (EN)
5A	97mm Partition 40dB/F30 - A206045 (EN)
5B	80mm Partition 40dB/F30 - A206034 (EN)
5C	65mm Pre-shell
5D	132mm Partition (tall) - A206016 (B) (EN)
6C	60mm External wall lining 0.3Uv - i.e. Celotex
6D	48mm External wall lining 0.5Uv - i.e. ThermalLine
6E	280mm External wall 0.18Uv - i.e. FrameTherm

spaceAgent

Architects and Designers
London-Heidelberg-Barcelona-Brussels
www.spaceagent.com
mail@spaceagent.com
spaceAgent Architects Ltd. is a RIBA Chartered Practice

project Conversion to residential
227 Shepherds Bush Road
London W6 7AS

client 227 SBR LTD
30 St Johns Road
Woking GU21 7SA

title DETAIL III - Extension

no. 4
name P18
date 19.02.2026
scale 1:10
status detail-07

DRAFT GA

1:20 @A3
1:10 @A1
I.lezzi
19.02.2026

SHE_P19f14d