

**GROUND FLOOR**

SHEPPERDS BUSH ROAD

- LEGEND**
- Existing
  - Demolition
  - Partitions between flats
  - Fire rated and sound proofing
  - Internal partitions

no. drawn date scale status title client project © ALL COPYRIGHTS RESERVED m 0 1 2 3 4 5 ALL DIMENSIONS TO BE CHECKED ON SITE

**spaceAgent**

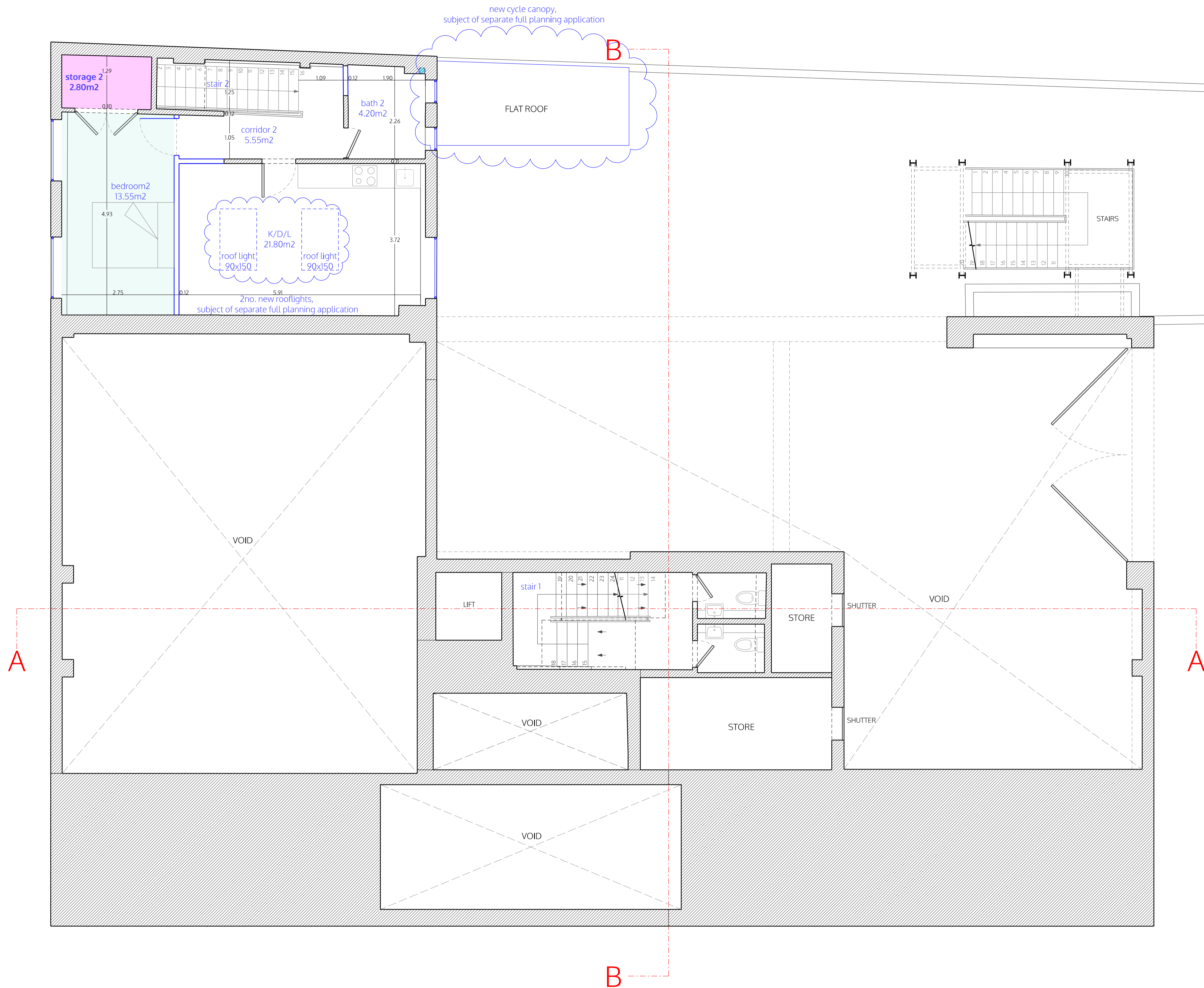
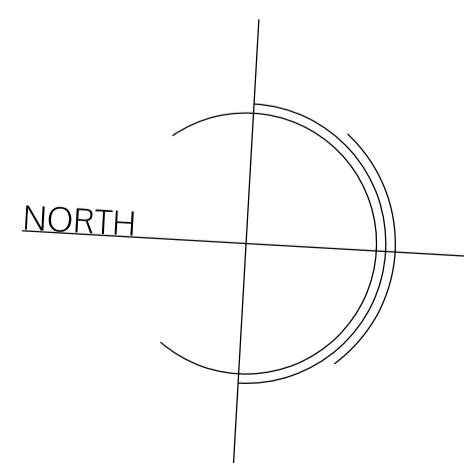
Architects and Designers mail@spaceagent.com  
 London-Heidelberg-Barcelona-Brussels spaceagent.com  
 spaceAgent Architects Ltd is a RIBA Chartered Practice

Conversion to residential  
 227 Shepherds Bush Road  
 London W6 7AS

227 SBR LTD  
 London

Ground floor plan  
 as proposed  
 rev. C = (Conversion) Class MA

<b>Planning only</b>	
	1:100 @A3 1:50 @A1
	28.05.2025
	I.lezzi
<b>SHE_P01c16</b>	



LEGEND

- Existing
- Demolition
- Partitions between flats
- Fire rated and sound proofing
- Internal partitions

no. drawn date scale status title client project copyright reserved m 0 1 2 3 4 5 ALL DIMENSIONS TO BE CHECKED ON SITE

MEZZANINE

**spaceAgent**  
 Architects and Designers [mail@spaceagent.com](mailto:mail@spaceagent.com)  
 London-Heidelberg-Barcelona-Brussels [spaceagent.com](http://spaceagent.com)  
 spaceAgent Architects Ltd is a RIBA Chartered Practice





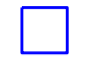
Conversion to residential  
 227 Shepherds Bush Road  
 London W6 7AS

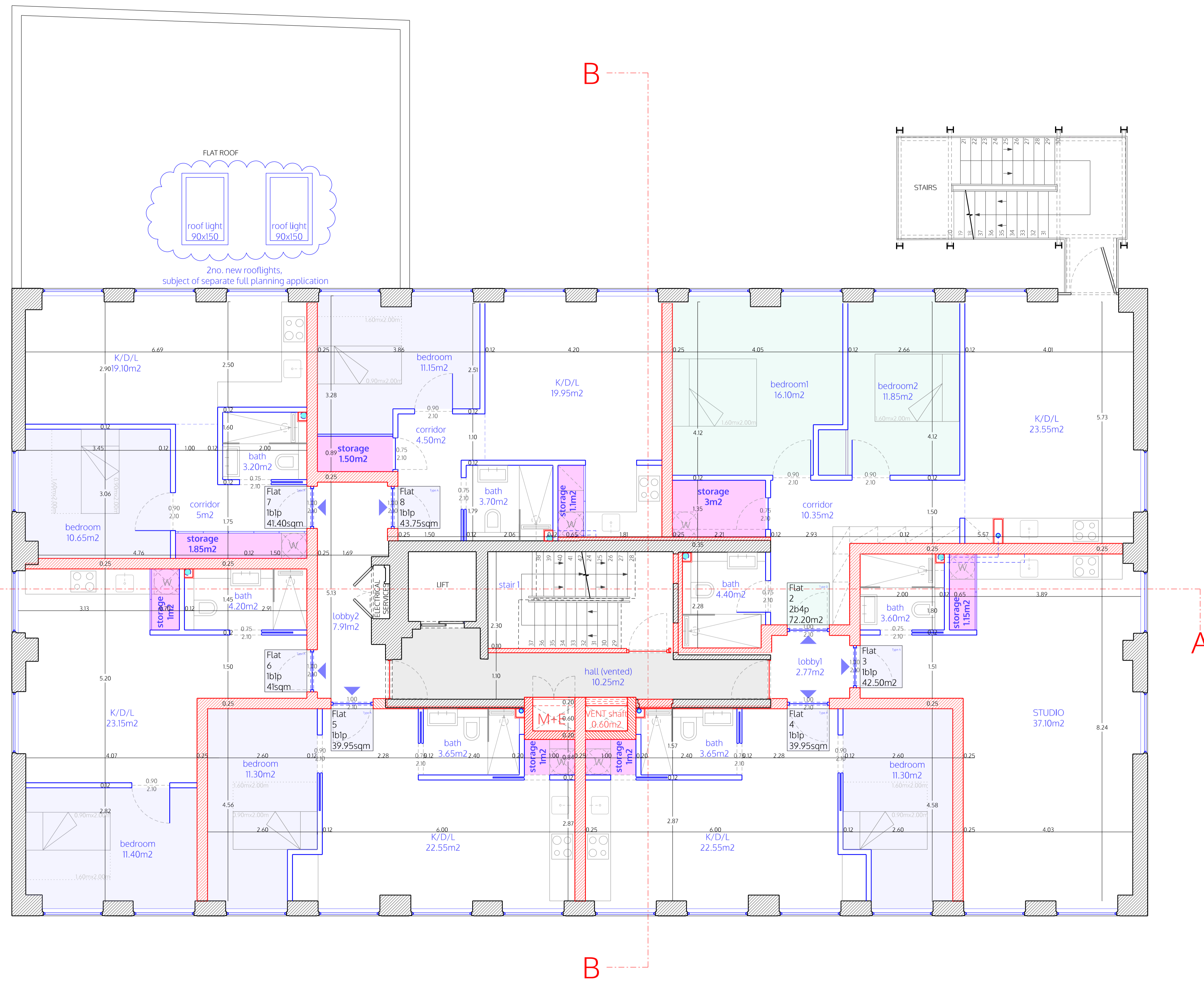
227 SBR LTD  
 London

Mezzanine plan  
 as proposed  
 rev. C = (Conversion) Class MA

<b>Planning only</b>	
	1:100 @A3 1:50 @A1
	28.05.2025
	I.lezzi
<b>SHE_P02c16</b>	

LEGEND

-  Existing
-  Demolition
-  Partitions between flats
-  Fire rated and sound proofing
-  Internal partitions



no. drawn date scale status title client project © ALL COPYRIGHTS RESERVED m 0 1 2 3 4 5 ALL DIMENSIONS TO BE CHECKED ON SITE

spaceAgent

Architects and Designers mail@spaceagent.com  
 London-Heidelberg-Barcelona-Brussels spaceagent.com  
 spaceAgent Architects Ltd is a RIBA Chartered Practice

Conversion to residential  
 227 Shepherds Bush Road  
 London W6 7AS

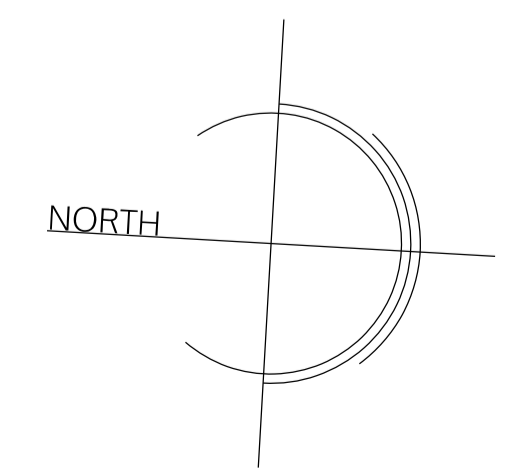
227 SBR LTD  
 London

First floor plan  
 as proposed  
 rev. C = (Conversion) Class MA

Planning only





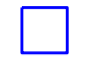
1:100 @A3  
 1:50 @A1  
 28.05.2025  
 I.lezzi

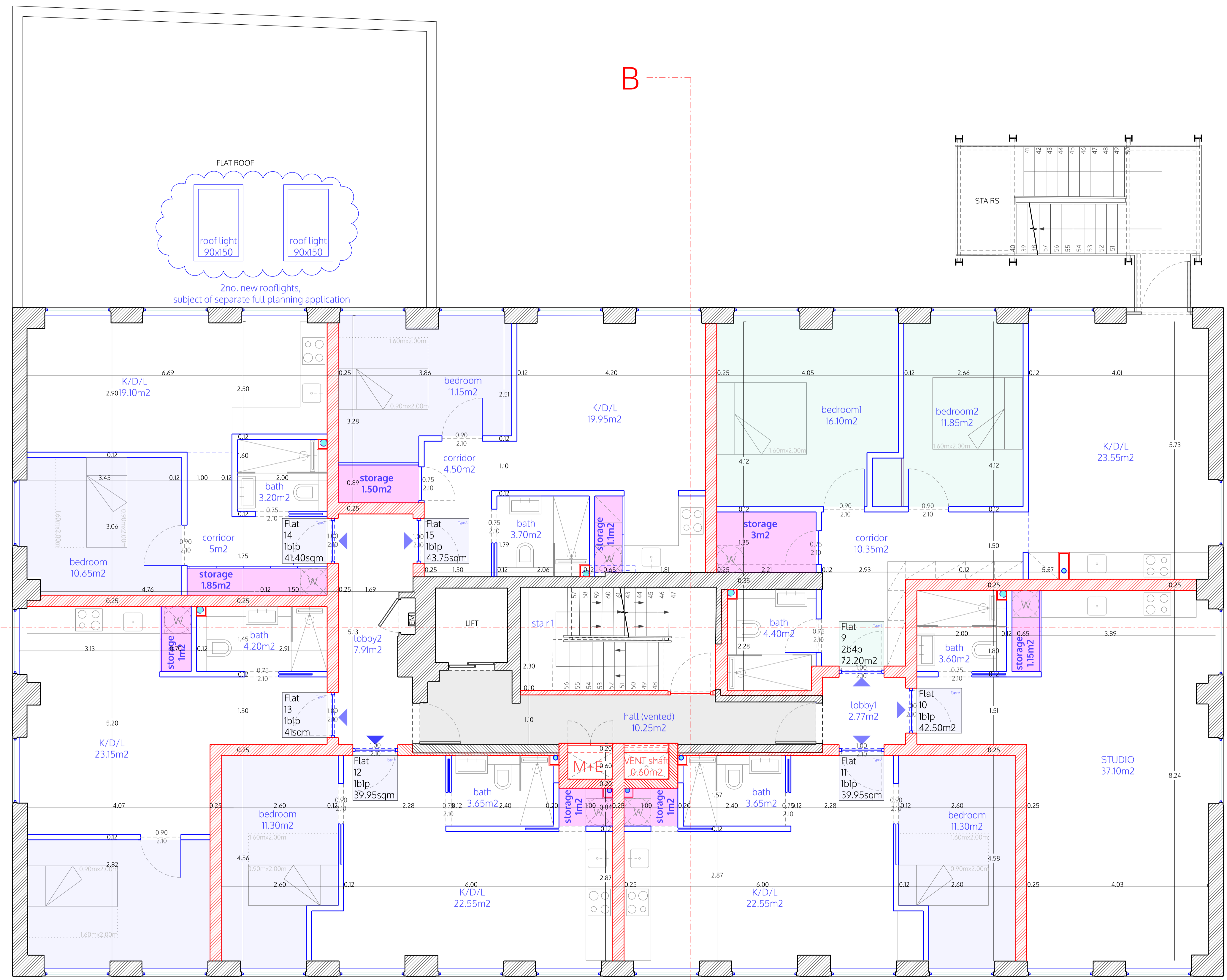
SHE\_P03c16



FIRST FLOOR

LEGEND

-  Existing
-  Demolition
-  Partitions between flats
-  Fire rated and sound proofing
-  Internal partitions



no. drawn date scale status title client project © ALL COPYRIGHTS RESERVED m 0 1 2 3 4 5 ALL DIMENSIONS TO BE CHECKED ON SITE

spaceAgent

Architects and Designers mail@spaceagent.com  
 London-Heidelberg-Barcelona-Brussels spaceagent.com  
 spaceAgent Architects Ltd is a RIBA Chartered Practice

Conversion to residential  
 227 Shepherds Bush Road  
 London W6 7AS

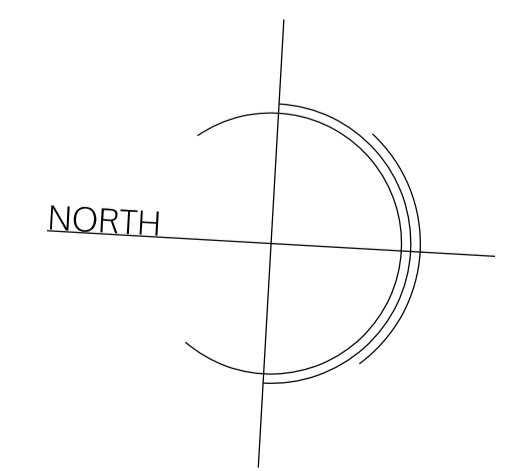
227 SBR LTD  
 London

Second floor plan  
 as proposed  
 rev. C = (Conversion) Class MA

Planning only






1:100 @A3  
 1:50 @A1  
 05.06.2025  
 I.lezzi

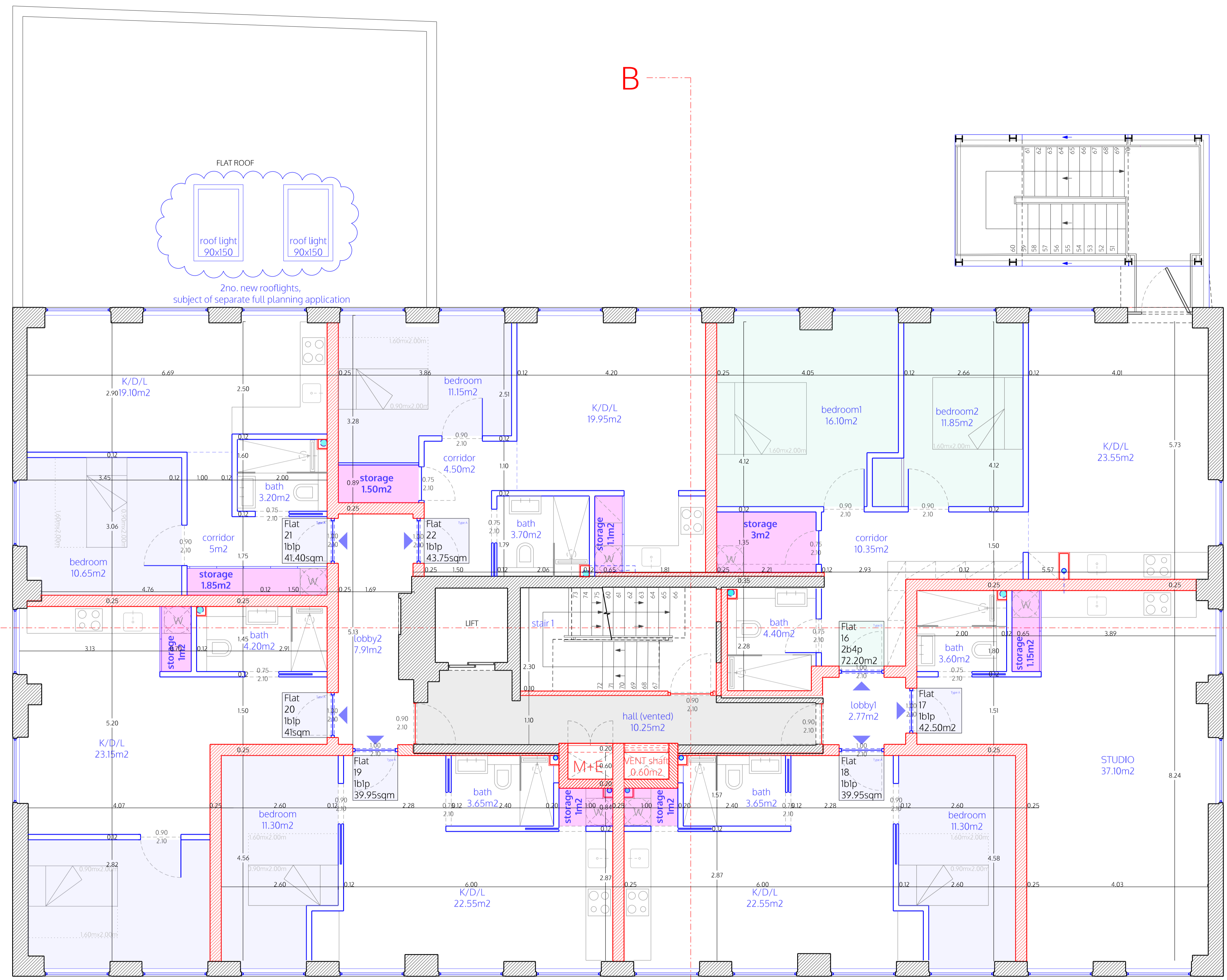
SHE\_P04c16a



SECOND FLOOR

LEGEND

-  Existing
-  Demolition
-  Partitions between flats
-  Fire rated and sound proofing
-  Internal partitions



no. drawn date scale status title client project © ALL COPYRIGHTS RESERVED m 0 1 2 3 4 5 ALL DIMENSIONS TO BE CHECKED ON SITE

spaceAgent

Architects and Designers mail@spaceagent.com  
 London-Heidelberg-Barcelona-Brussels spaceagent.com  
 spaceAgent Architects Ltd is a RIBA Chartered Practice

Conversion to residential  
 227 Shepherds Bush Road  
 London W6 7AS

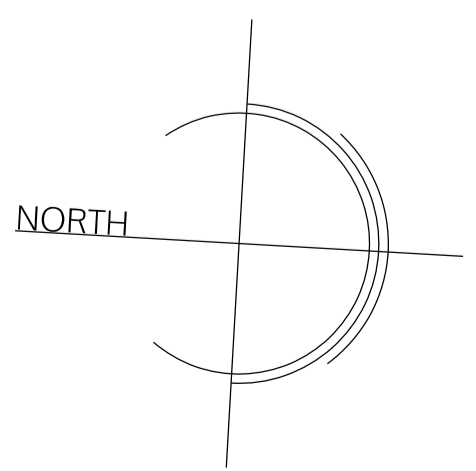
227 SBR LTD  
 London

Third floor plan  
 as proposed  
 rev. C = (Conversion) Class MA

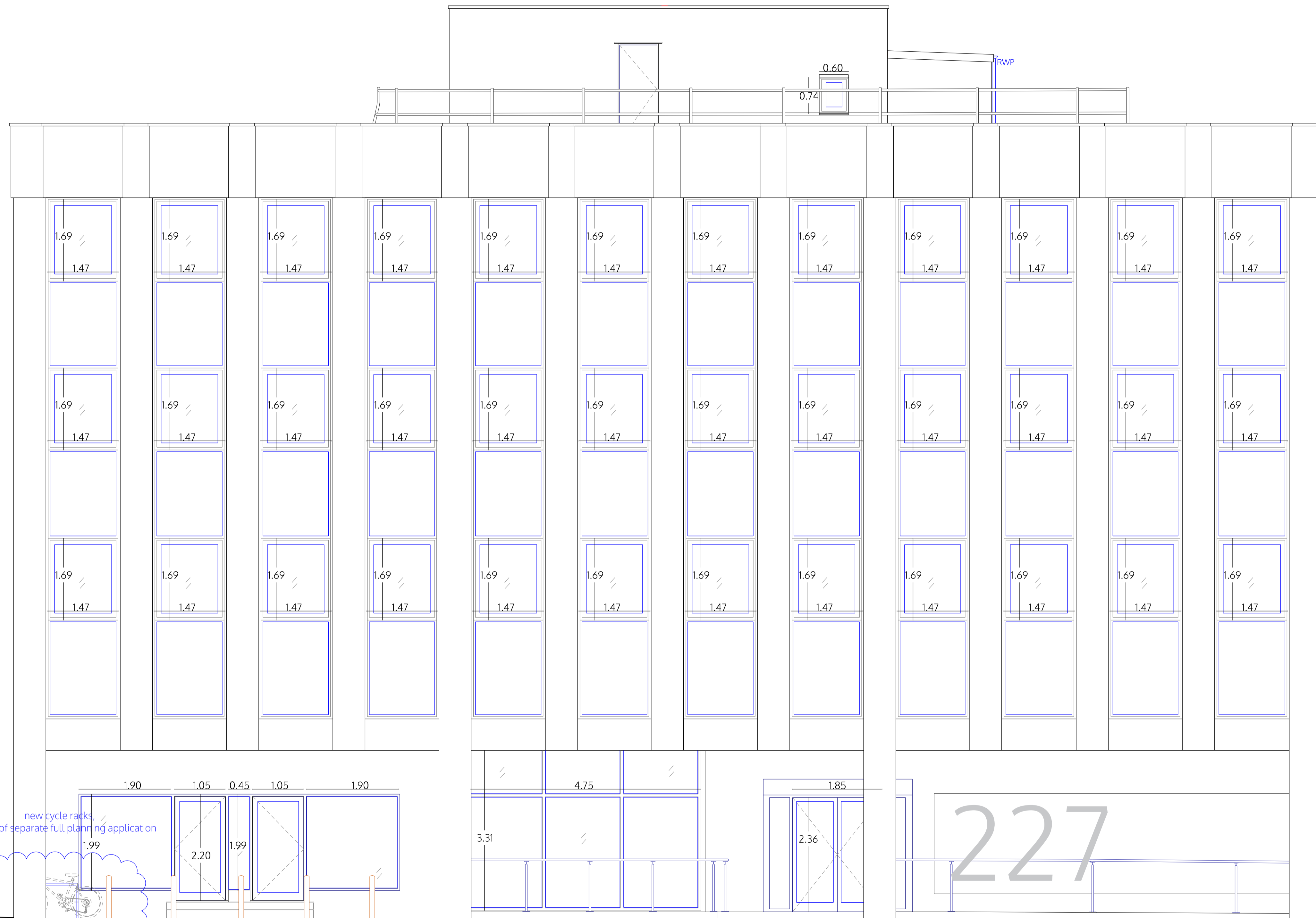
Planning only

	1:100 @A3
	1:50 @A1
	05.06.2025
	I.lezzi

SHE\_P05c16a



THIRD FLOOR



new cycle racks,  
subject of separate full planning application

2 x SS cycle parking  
(commercial)

2 x SS cycle parking  
(residential)

FRONT ELEVATION (WEST)

no. drawn date scale status title client project © ALL COPYRIGHTS RESERVED m 0 1 2 3 4 5 ALL DIMENSIONS TO BE CHECKED ON SITE

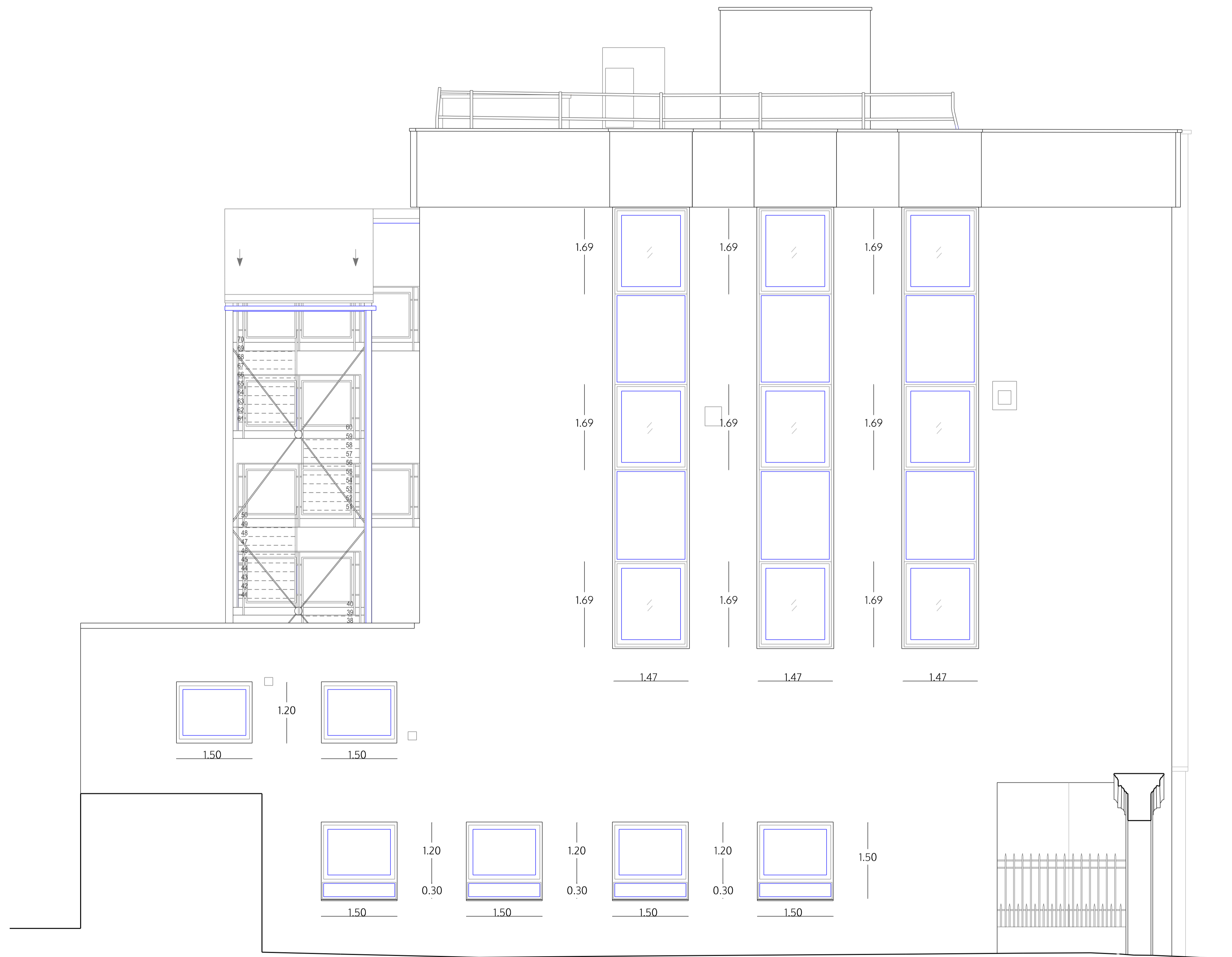
**spaceAgent**  
Architects and Designers mail@spaceagent.com  
London-Heidelberg-Barcelona-Brussels spaceagent.com  
spaceAgent Architects Ltd is a RIBA Chartered Practice

Conversion to residential  
227 Shepherds Bush Road  
London W6 7AS

227 SBR LTD  
London

Front elevation (West)  
as proposed  
rev. C = (Conversion) Class MA

Planning only	
1:100 @A3	
1:50 @A1	
28.05.2025	
I.lezzi	
SHE_P08c16	



NORTH ELEVATION

no. drawn date scale status title client project © ALL COPYRIGHTS RESERVED m 0 1 2 3 4 5 ALL DIMENSIONS TO BE CHECKED ON SITE

# spaceAgent

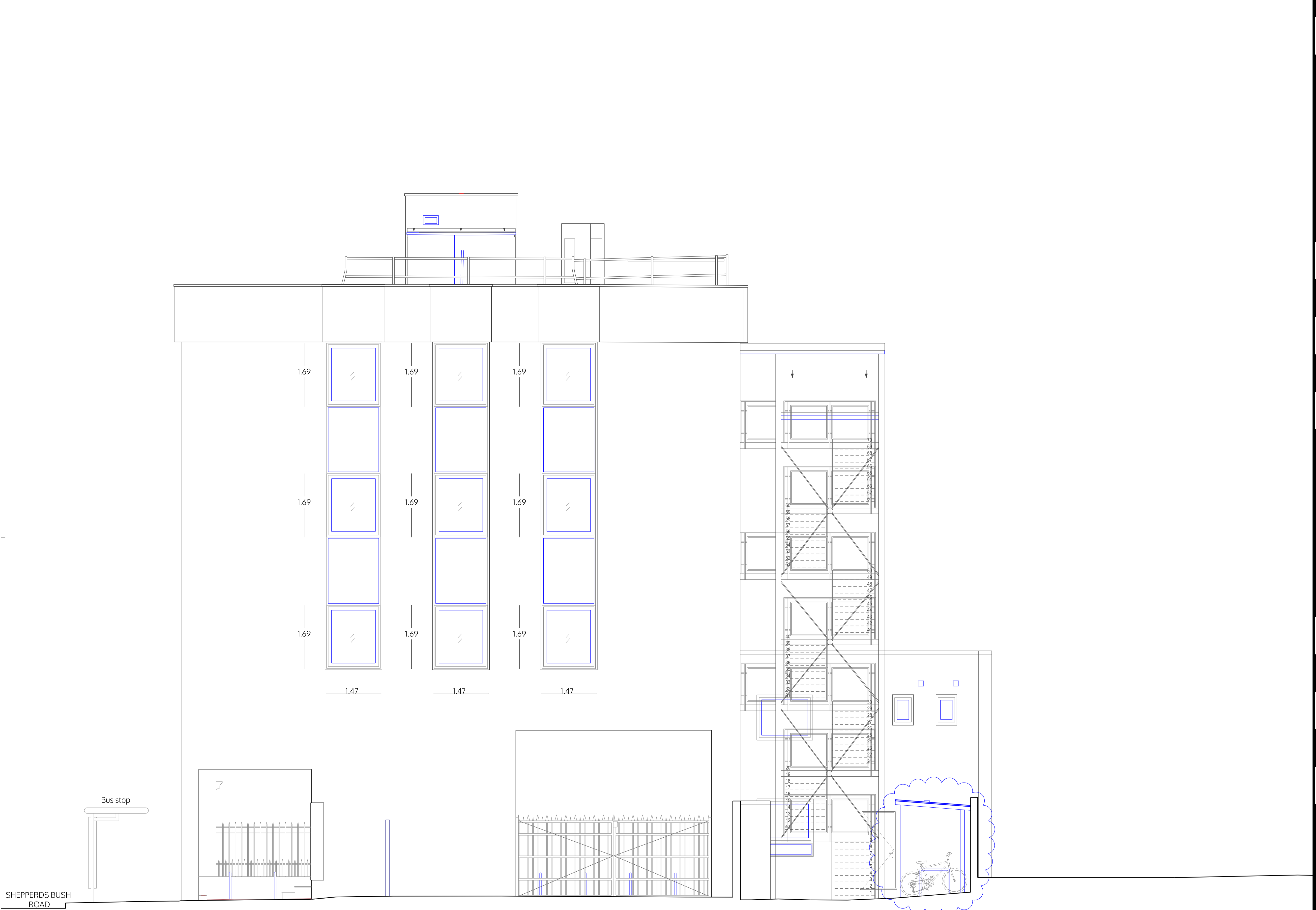
Architects and Designers [mail@spaceagent.com](mailto:mail@spaceagent.com)  
 London-Heidelberg-Barcelona-Brussels [spaceagent.com](http://spaceagent.com)  
 spaceAgent Architects Ltd is a RIBA Chartered Practice

Conversion to residential  
 227 Shepherds Bush Road  
 London W6 7AS

227 SBR LTD  
 London

North elevation  
 as proposed  
 rev. C = (Conversion) Class MA

Planning only	
	1:100 @A3 1:50 @A1
	28.05.2025
	I.lezzi
SHE_P09c16	



SOUTH ELEVATION

no. drawn date scale status title client project © ALL COPYRIGHTS RESERVED m 0 1 2 3 4 5 ALL DIMENSIONS TO BE CHECKED ON SITE

spaceAgent

Architects and Designers mail@spaceagent.com  
 London-Heidelberg-Barcelona-Brussels spaceagent.com  
 spaceAgent Architects Ltd is a RIBA Chartered Practice

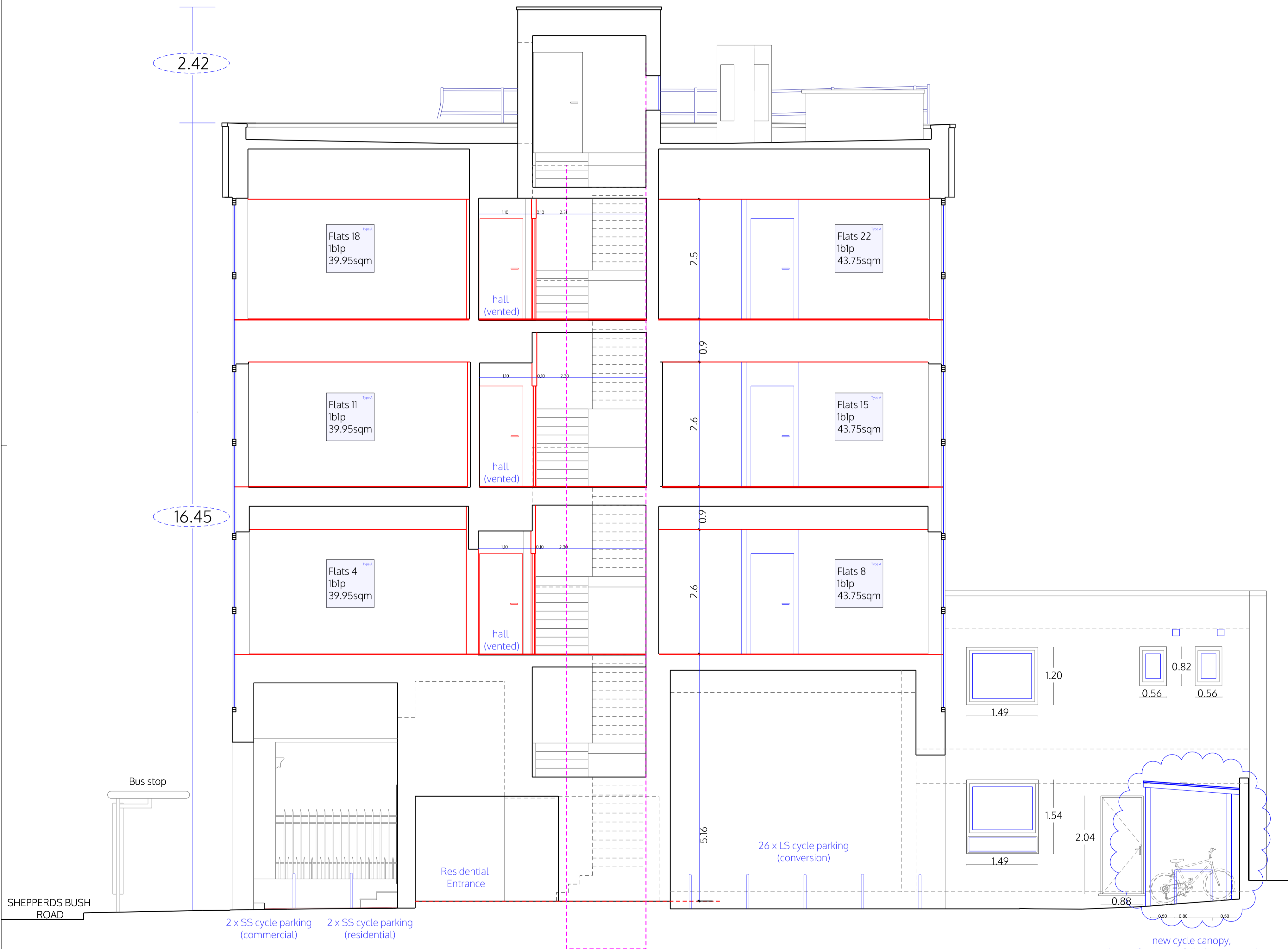
Conversion to residential  
 227 Shepherds Bush Road  
 London W6 7AS

227 SBR LTD  
 London

South elevation  
 as proposed  
 rev. C = (Conversion) Class MA

Planning only	
	1:100 @A3 1:50 @A1
	28.05.2025
	I.lezzi

SHE\_P10c16



SECTION B-B

no. drawn date scale status title client project © ALL COPYRIGHTS RESERVED m 0 1 2 3 4 5 ALL DIMENSIONS TO BE CHECKED ON SITE

spaceAgent

Architects and Designers mail@spaceagent.com  
 London-Heidelberg-Barcelona-Brussels spaceagent.com  
 spaceAgent Architects Ltd is a RIBA Chartered Practice

Conversion to residential  
 227 Shepherds Bush Road  
 London W6 7AS

227 SBR LTD  
 London

Section B-B  
 as proposed  
 rev. C = (Conversion) Class MA

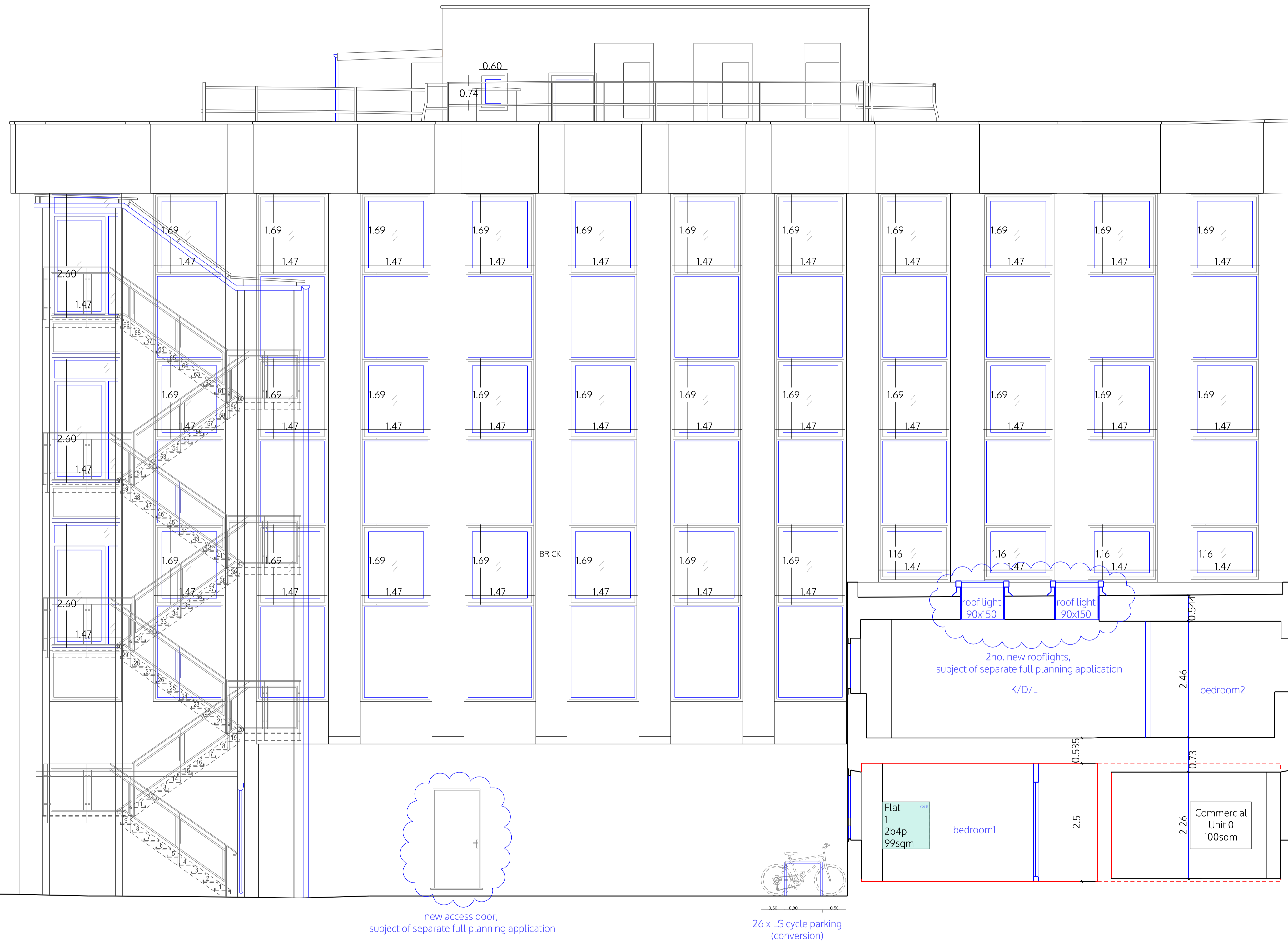
Planning only

1:100 @A3  
 1:50 @A1

28.05.2025

I.lezzi

SHE\_P11c16



BACK ELEVATION (EAST)

no. drawn date scale status title client project © ALL COPYRIGHTS RESERVED m 0 1 2 3 4 5 ALL DIMENSIONS TO BE CHECKED ON SITE

## spaceAgent

Architects and Designers mail@spaceagent.com  
 London-Heidelberg-Barcelona-Brussels spaceagent.com  
 spaceAgent Architects Ltd is a RIBA Chartered Practice

Conversion to residential  
 227 Shepherds Bush Road  
 London W6 7AS

227 SBR LTD  
 London

Back elevation (East)  
 as proposed  
 rev. C = (Conversion) Class MA

### Planning only

1:100 @A3  
 1:50 @A1

26.06.2025

I.lezzi

SHE\_P12c12



SECTION A-A

no. drawn date scale status title client project © ALL COPYRIGHTS RESERVED m 0 1 2 3 4 5 ALL DIMENSIONS TO BE CHECKED ON SITE

spaceAgent

Architects and Designers mail@spaceagent.com  
 London-Heidelberg-Barcelona-Brussels spaceagent.com  
 spaceAgent Architects Ltd is a RIBA Chartered Practice

Conversion to residential  
 227 Shepherds Bush Road  
 London W6 7AS

227 SBR LTD  
 London

Section A-A  
 as proposed  
 rev. C = (Conversion) Class MA

Planning only

1:100 @A3  
 1:50 @A1  
 28.05.2025  
 I.lezzi

SHE\_P13c16